

ADDENDUM #4

January 11, 2013

Re: Harrisburg Area Community College
Central Administration – Wildwood Conference Center Renovations
Phase 2 - Demolition
Solicitation # RFB13-12

From: Eastern PCM, LLC
Construction Manager – HACC
645 N. 12th Street, Suite 200
Lemoyne, PA 17043

To: All Planholders

This Addendum is hereby made part of the Plans dated December 10, 2012 and Project Manual dated December 14, 2012 for the above referenced project. The provisions of this Addendum are intended to supplement the provisions of the Plans and Project Manual and/or supersede them where contradictory thereto.

This Addendum contains changes to the requirements of the Plans and Project Manual. Such changes shall be incorporated into the Plans and Project Manual and shall apply to work with the same meaning and force as if they had been included in the original Plans and Project Manual. Where this Addendum modifies a portion of a paragraph or phrase of the Project Manual, the remaining unmodified portion of the paragraph or phrase shall remain in force.

The conditions and terms of the Plans and Project Manual shall govern work described in this Addendum. Whenever the conditions of work, or the quality or quantity of materials or workmanship are not fully described in this Addendum, the conditions of work etc. included in the Plans and Project Manual for similar items of work shall apply to the work described in this Addendum. If no similar items of work are included in the Plans and Project Manual, the quality of material and workmanship shall be subject to the written acceptance of the Architect.

4.1 CHANGES TO THE DRAWINGS

- A. Drawing X2.7 – Large Scale Second Floor Demolition Plan – Section B: REVISE drawing per SKA-3.
- B. Drawing X2.8 – Large Scale Roof Demolition Plan – Section A: REVISE drawing per SKA-4.
- C. Drawing A2.3 – Roof Plan – Composite – New: REPLACE this sheet in its entirety.

- D. Drawing A2.7 – Large Scale Second Floor New Plan – Section B: REPLACE this sheet in its entirety.
- E. Drawing A2.8 – Large Scale New Roof Plan – Section A: REVISE drawings per SKA-5.

4.2 CHANGES TO THE DETAIL REFERENCE MANUAL

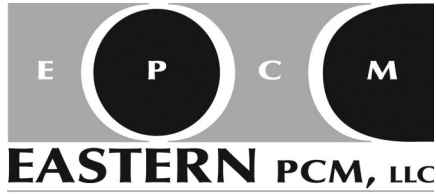
- A. N-3 – Demolition Keynotes: REPLACE this page in its entirety.
- B. RD-2 – Roof Detail: REPLACE this page in its entirety.
- C. RD-3 – Roof Detail: REPLACE this page in its entirety.
- D. RD-4 – Roof Detail: REPLACE this page in its entirety.
- E. RD-5 – Roof Detail: REPLACE this page in its entirety.
- F. RD-6 – Roof Detail: REPLACE this page in its entirety.
- G. RD-7 – Roof Detail: REPLACE this page in its entirety.
- H. RD-7a – Roof Detail: ADD this page to the Detail Reference Manual.
- I. RD-7b – Roof Detail: ADD this page to the Detail Reference Manual.
- J. RD-8 – Roof Detail: REPLACE this page in its entirety.
- K. RD-8a – Roof Detail: ADD this page to the Detail Reference Manual.
- L. RD-9 – Roof Detail: REPLACE this page in its entirety.
- M. RD-20 – Roof Detail: REPLACE this page in its entirety.

4.3 ATTACHMENTS

- A. SKA-3 – Partial Large Scale Second Floor Demolition Plan – Section B
- B. SKA-4 – Partial Large Scale Roof Demolition Plan – Section A
- C. Drawing A2.3 – Roof Plan – Composite – New (revised 1.11.13)
- D. Drawing A2.7 – Large Scale Second Floor New Plan – Section B (revised 1.11.13)
- E. SKA-5 – Partial Large Scale New Roof Plan – Section A
- F. N-3 Demolition Keynotes (revised 1.11.13)
- G. RD-2 – Roof Detail (revised 1.11.13)
- H. RD-3 – Roof Detail (revised 1.11.13)

- I. RD-4 – Roof Detail (revised 1.11.13)
- J. RD-5 – Roof Detail (revised 1.11.13)
- K. RD-6 – Roof Detail (revised 1.11.13)
- L. RD-7 – Roof Detail (revised 1.11.13)
- M. RD-7a – Roof Detail
- N. RD-7b – Roof Detail
- O. RD-8 – Roof Detail (revised 1.11.13)
- P. RD-8a – Roof Detail
- Q. RD-9 – Roof Detail (revised 1.11.13)
- R. RD-20 – Roof Detail (revised 1.11.13)

END OF ADDENDUM



Please sign and return this page, via fax, to Eastern PCM, LLC at (717) 233-1666 indicating receipt of this Addendum.

**HACC Central Administration Building
Phase 2 – Building Envelope Renovations**

Addendum # _____ has been received.

Company: _____
Print Company Name

Received By: _____
Print Name Signature

Date: _____

Please check one:

- _____ We are bidding as a prime contractor
- _____ We are not bidding
- _____ We are a sub-contractor

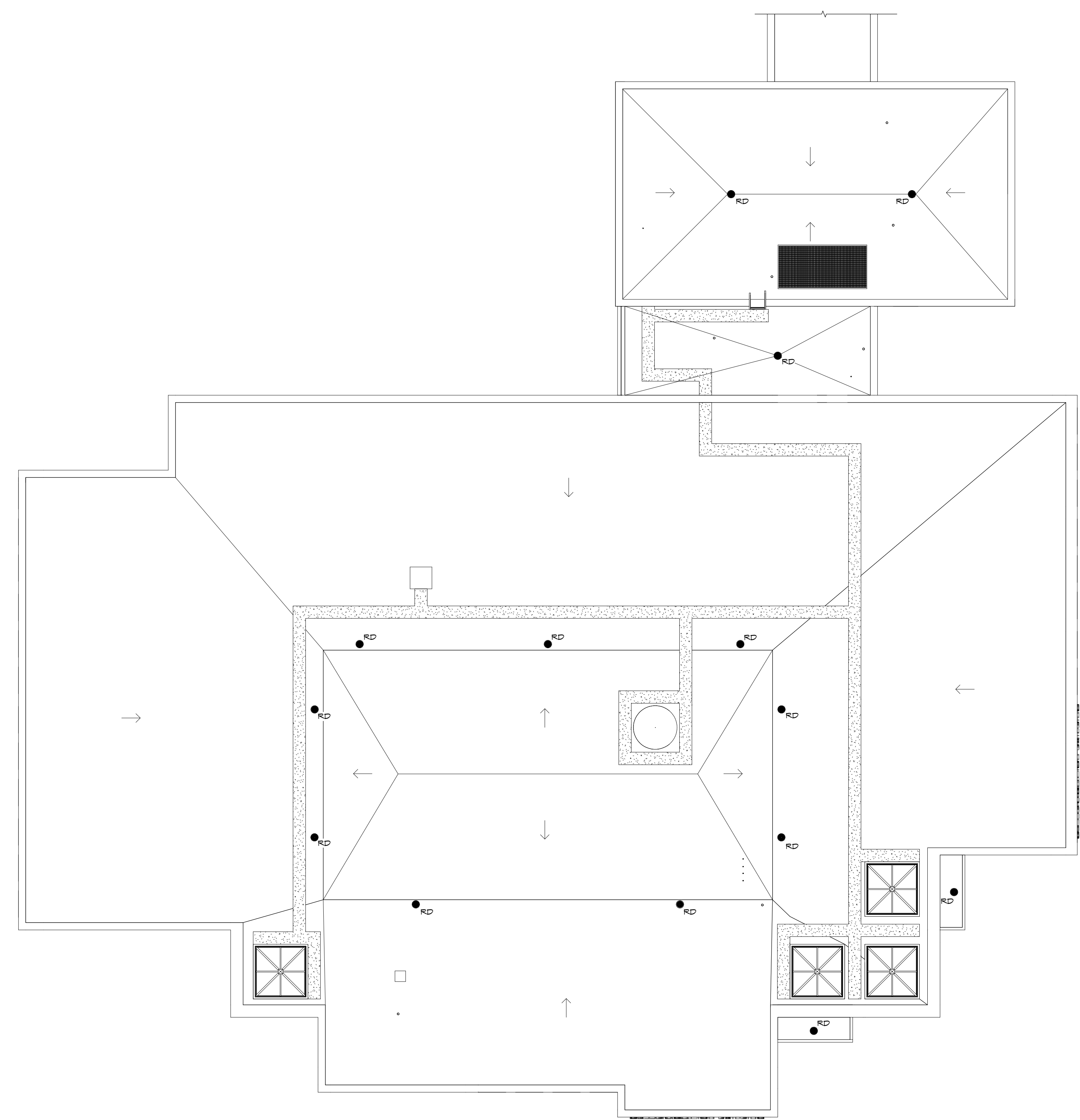
ENTIRE SHEET HAS BEEN MODIFIED

revisions		
no.	date	description
1	1/11/13	ADDENDUM #4

THE CONTRACTOR SHALL VERIFY ALL DIMENSIONS AND EXISTING CONDITIONS AT THE SITE BEFORE PROCEEDING WITH EACH PHASE OF HIS WORK. THIS DRAWING, AS AN INSTRUMENT OF SERVICE, IS AND SHALL REMAIN THE PROPERTY OF THE ARCHITECT.

© Murray Associates Architects, P.C.

CONSULTANT: OWNER'S REPRESENTATIVE
 EASTERN PGM, LLC
 645 N. 12TH STREET
 SUITE 200
 LEMOYNE, PA 17043
 717-233-3616



ROOF PLAN - COMPOSITE - NEW
 SCALE: 3/32" = 1'-0"
 NOTE: SEE SHEET N-4 IN D.R.M. FOR GENERAL NOTES - NEW CONSTRUCTION.



ALTERATIONS TO HACC
 CENTRAL
 ADMINISTRATION
 BUILDING

HARRISBURG, PA

ROOF - COMPOSITE -
 NEW

CONSTRUCTION
 DOCUMENTS

DRAWN BY: TAB
 CHECKED BY: BHD

DATE:
 DECEMBER 10, 2012

PROJECT NUMBER:
3395

SHEET NUMBER:
A2.3

PHASE 2

DEMOLITION KEYNOTES

NUMBER	DESCRIPTION
24	REMOVE EXISTING PIN LETTERS. TURN OVER TO OWNER.
25	REMOVE EXISTING HANDRAIL. REMOVE BRICK WITH HANDRAIL ANCHOR. INSTALL NEW BRICK TO MATCH.
26	REMOVE EXISTING BRICK ROWLOCK CAP (STORE FOR RE-INSTALLATION). REMOVE MORTOR FROM BRICK ROWLOCK CAP. REMOVE BRICK AND ASSOCIATED 8" REINFORCED CONCRETE FOUNDATION WALL DOWN TO ONE COURSE BELOW FINISH FLOOR LINE.
27	REMOVE EXISTING PLANTING MATERIAL AND SUB-BASE AS REQUIRED FOR NEW REVISED PLANTER LAYOUT.
28	NOT USED
29	REMOVE EXISTING PLAQUE. TURN OVER TO OWNER.
30	REMOVE EXISITNG LIGHTS. REMOVE EXISTING BRICK WHERE LIGHTS WERE ATTACHED AS REQUIRED. INSTALL NEW BRICK TO MATCH.
31	REMOVE EXISTING BRICK ROWLOCK CAP (STORE FOR RE-INSTALLATION). REMOVE MORTOR FROM BRICK ROWLOCK CAP. REMOVE 7 COURSES OF BRICK AND ASSOCIATED 8" REINFORCED CONCRETE FOUNDATION WALL.
32	REMOVE ILLUMINATED RAILING SYSTEM AND BRACKETS.
33	REMOVE EXISTING ROOF LADDER. STORE AND MODIFY FOR LATER RE-INSTALLATION.
34	REMOVE ALL SEALANT AND BACKER MATERIALS AT ALL JOINTS BETWEEN WINDOWS, MASONRY, PRECAST CONCRETE, ETC. PREP FOR NEW SEALANT AND BACKER ROD. (TYPICAL FOR ENTIRE PROJECT)
35	REMOVE EXISTING BRICK ROWLOCK CAP (STORE FOR RE-INSTALLATION). REMOVE MORTOR FROM BRICK ROWLOCK CAP. REMOVE 11 COURSES OF BRICK AND ASSOCIATED 8" REINFORCED CONCRETE FOUNDATION WALL.
36	REMOVE PORTION OF EXISTING PRECAST CONCRETE CAP. REFER TO NEW DRAWINGS FOR EXTENT OF REMOVAL.
37	REMOVE EXISTING SKYLIGHT AND ASSOCIATED CURB. REMOVE EXISTING STEEL PLATES, CHANNELS AND CLIP ANGLES. REMOVE EXISTING METAL STUD AND GYPSUM BOARD SOFFIT. SEE DETAIL RD-16 IN D.R.M.
38	REMOVE EXISTING COOLING TOWER RELIEF VENT AND ASSOCIATED CURB. SEE MECHANICAL DRAWINGS. SEE DETAIL RD-17 AND RD-18 IN D.R.M.
39	REMOVE EXISTING DAMAGED GROUT AS REQUIRED; PREP AREA FOR INSTALLATION OF NEW GROUT.
40	REMOVE EXISTING DAMAGED BRICK.
41	REMOVE EXISTING FLASHING AS REQUIRED FOR NEW ROOFING SYSTEM.

1 →

1 →

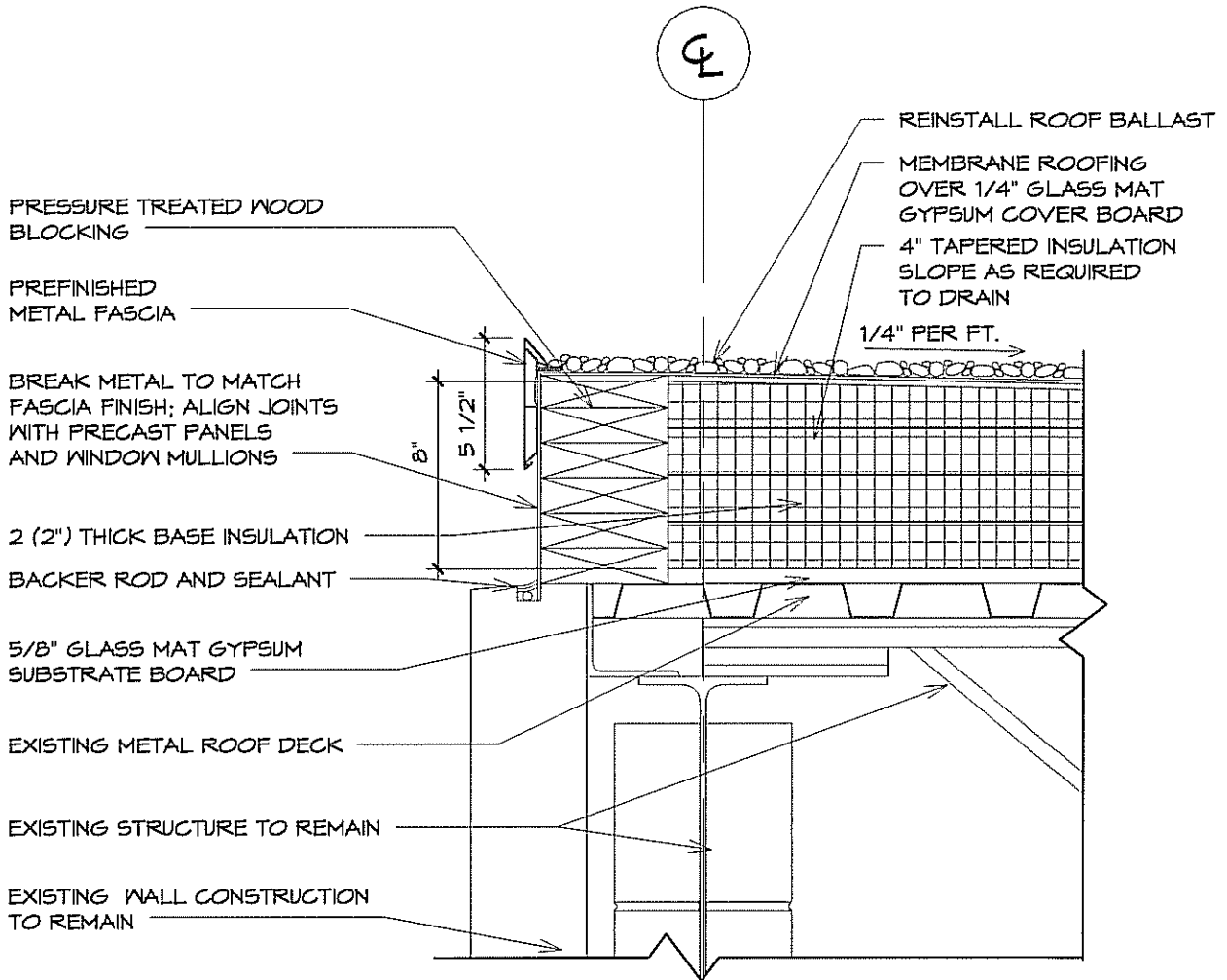
1 →

1 →

2 →

ADDENDUM #1 - DECEMBER 21, 2012

ADDENDUM #4 - JANUARY 11, 2013



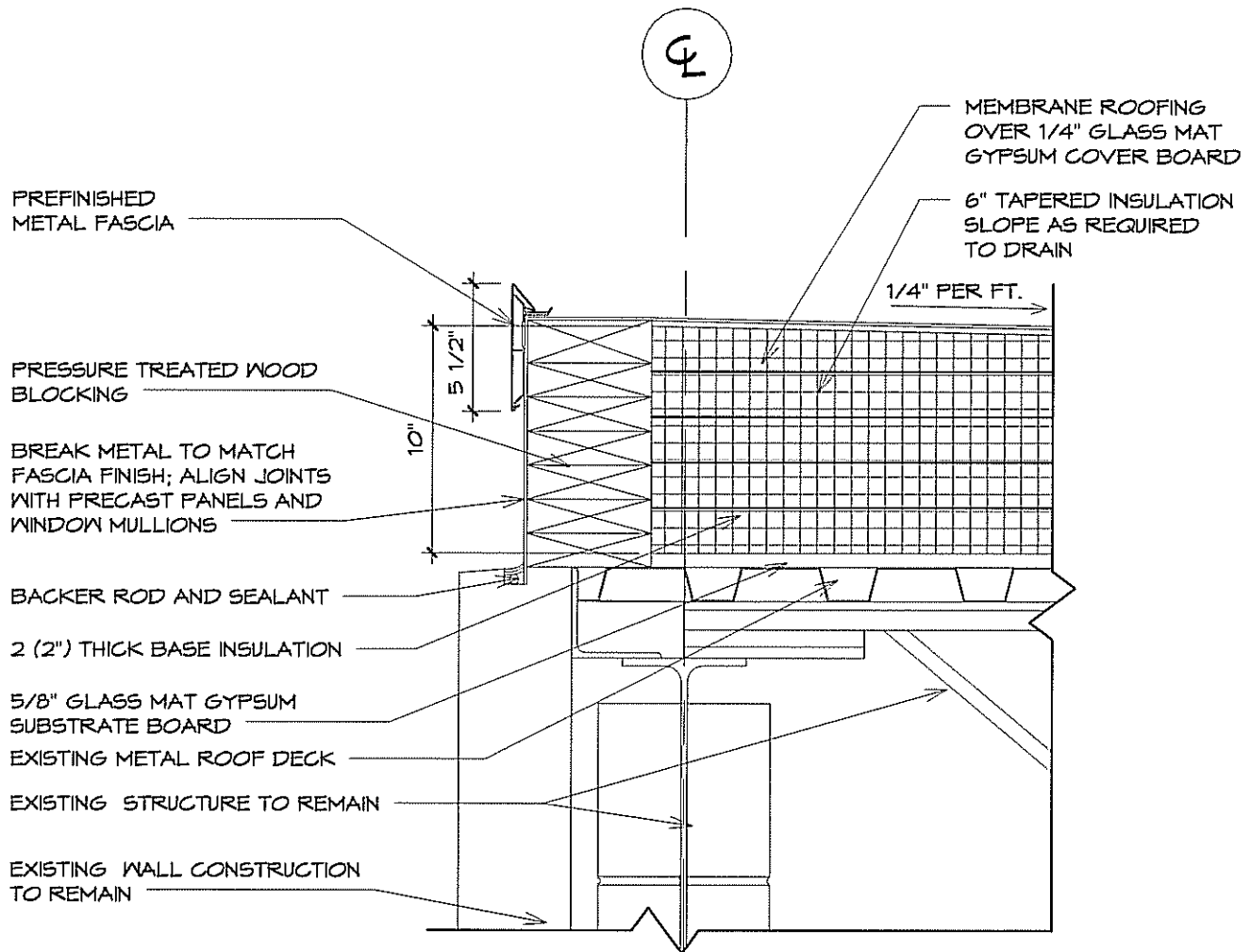
ROOF DETAIL

SCALE: 1 1/2" = 1'-0"

PHASE 2 - CONSTRUCTION DOCUMENTS
 3395/ ALTERATIONS TO HACC CENTRAL
 ADMINISTRATION BUILDING/ DECEMBER 10, 2012
 MURRAY ASSOCIATES ARCHITECTS, P.C.

ADDENDUM #4 - JANUARY 11, 2013

RD-2



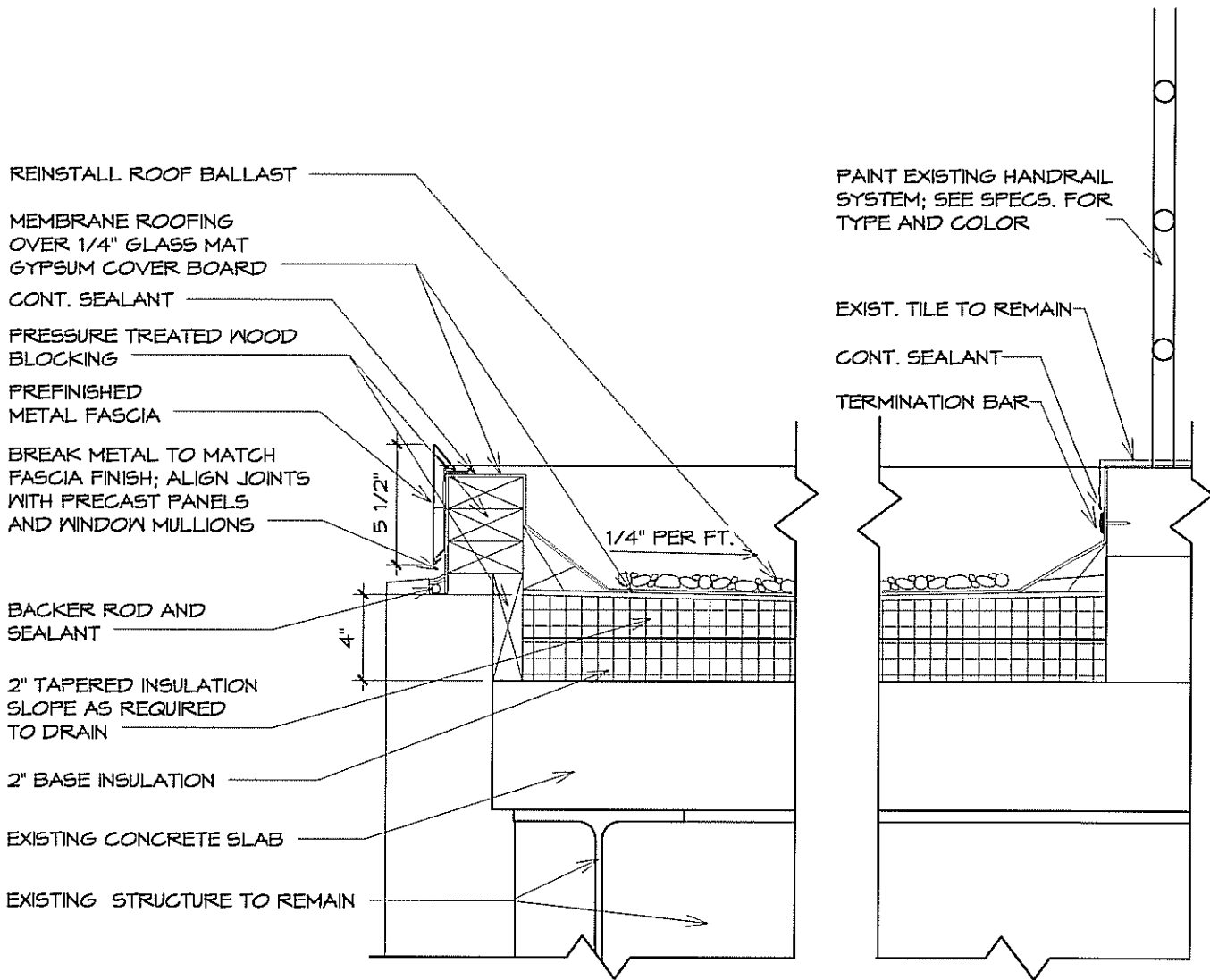
ROOF DETAIL

SCALE: 1 1/2" = 1'-0"

PHASE 2 - CONSTRUCTION DOCUMENTS
 3395/ ALTERATIONS TO HACC CENTRAL
 ADMINISTRATION BUILDING/ DECEMBER 10, 2012
 MURRAY ASSOCIATES ARCHITECTS, P.C.

ADDENDUM #4 - JANUARY 11, 2013

RD-3



ROOF DETAIL

SCALE: 1 1/2" = 1'-0"

PHASE 2 - CONSTRUCTION DOCUMENTS
3395/ ALTERATIONS TO HACC CENTRAL
ADMINISTRATION BUILDING/ DECEMBER 10, 2012
MURRAY ASSOCIATES ARCHITECTS, P.C.

ADDENDUM #4 - JANUARY 11, 2013

RD-4

MEMBRANE ROOFING
OVER 1/4" GLASS MAT
GYPSUM COVER BOARD

CONT. SEALANT

PRESSURE TREATED WOOD
BLOCKING

PREFINISHED
METAL FASCIA

BREAK METAL TO MATCH
FASCIA FINISH; ALIGN
JOINTS WITH PRECAST
PANELS AND WINDOW
MULLIONS

BACKER ROD AND
SEALANT

2" TAPERED INSULATION
SLOPE AS REQUIRED
TO DRAIN

2" BASE INSULATION

5/8" GLASS MAT GYPSUM
SUBSTRATE BOARD

EXISTING METAL DECK

EXISTING STRUCTURE TO REMAIN

5 1/2"

1/4" PER FT.

EXISTING WALL
CONSTRUCTION
TO REMAIN

CONT. SEALANT

REMOVE EXIST.
FLASHING; INSTALL
NEW FLASHING

CONT. SEALANT

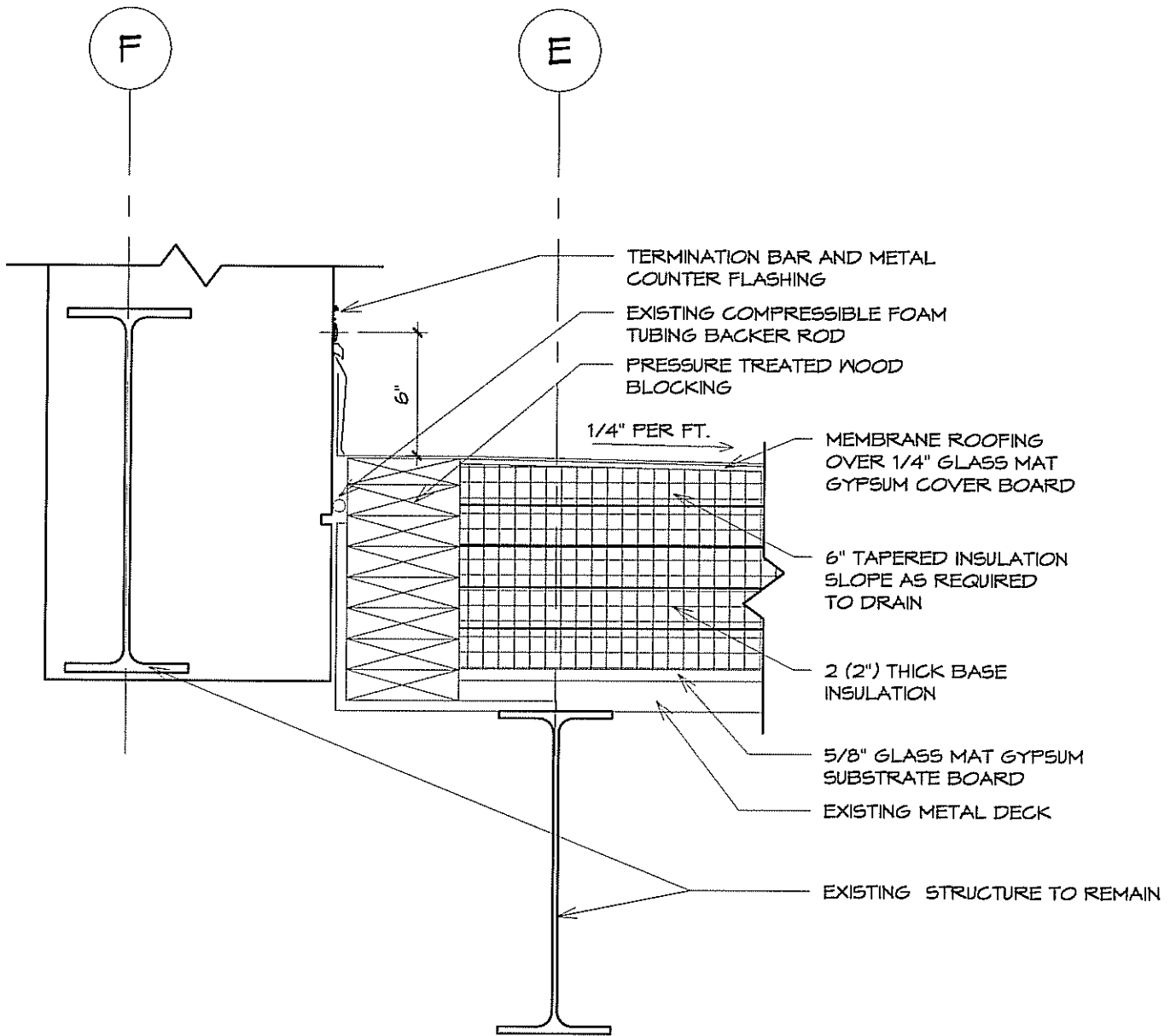
ROOF DETAIL

SCALE: 1 1/2" = 1'-0"

PHASE 2 - CONSTRUCTION DOCUMENTS
3395/ ALTERATIONS TO HACC CENTRAL
ADMINISTRATION BUILDING/ DECEMBER 10, 2012
MURRAY ASSOCIATES ARCHITECTS, P.C.

ADDENDUM #4 - JANUARY 11, 2013

RD-5



ROOF DETAIL

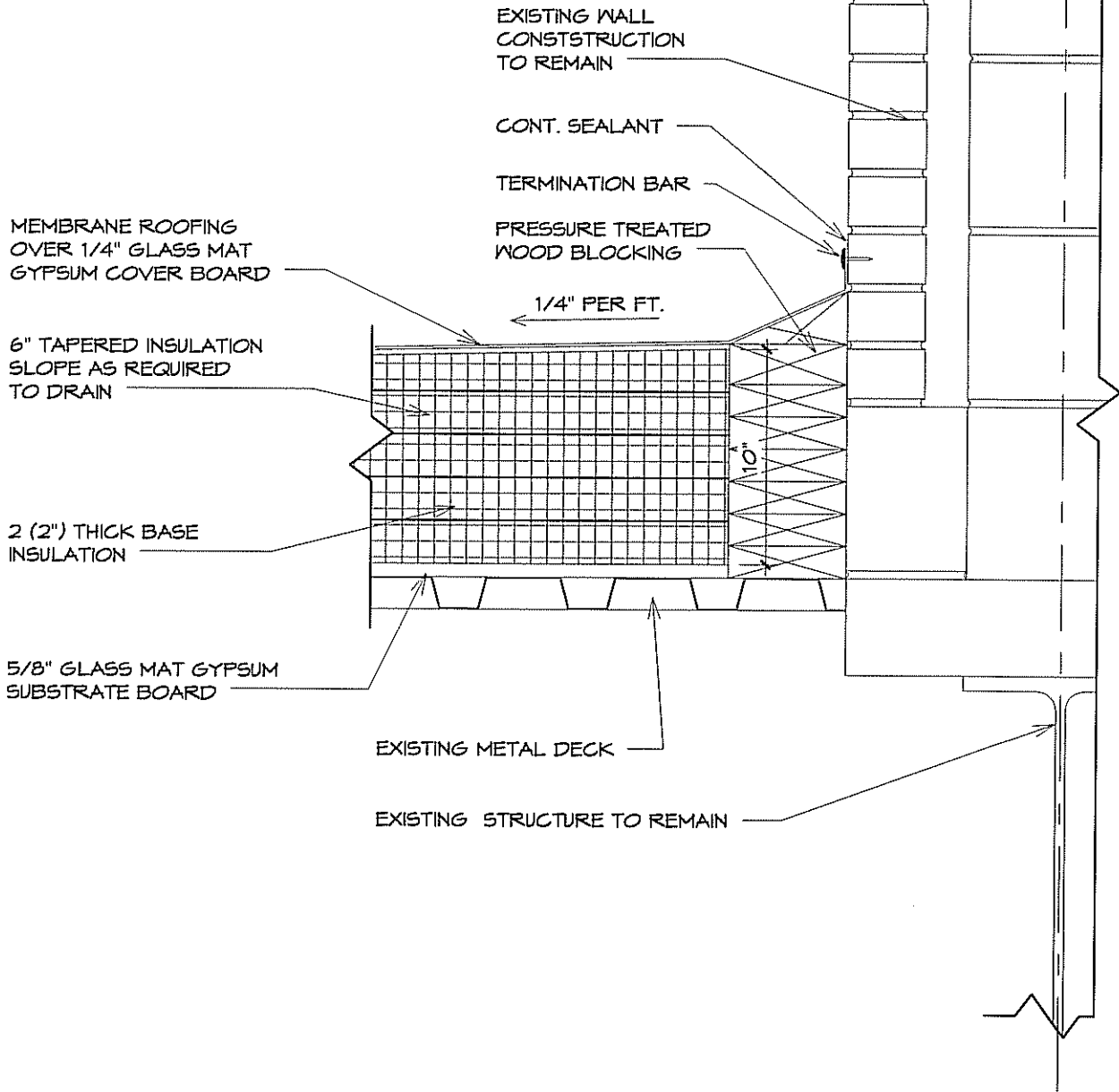
SCALE: 1 1/2" = 1'-0"

PHASE 2 - CONSTRUCTION DOCUMENTS
 3395/ ALTERATIONS TO HACC CENTRAL
 ADMINISTRATION BUILDING/ DECEMBER 10, 2012
 MURRAY ASSOCIATES ARCHITECTS, P.C.

ADDENDUM #4 - JANUARY 11, 2013

RD-6

D



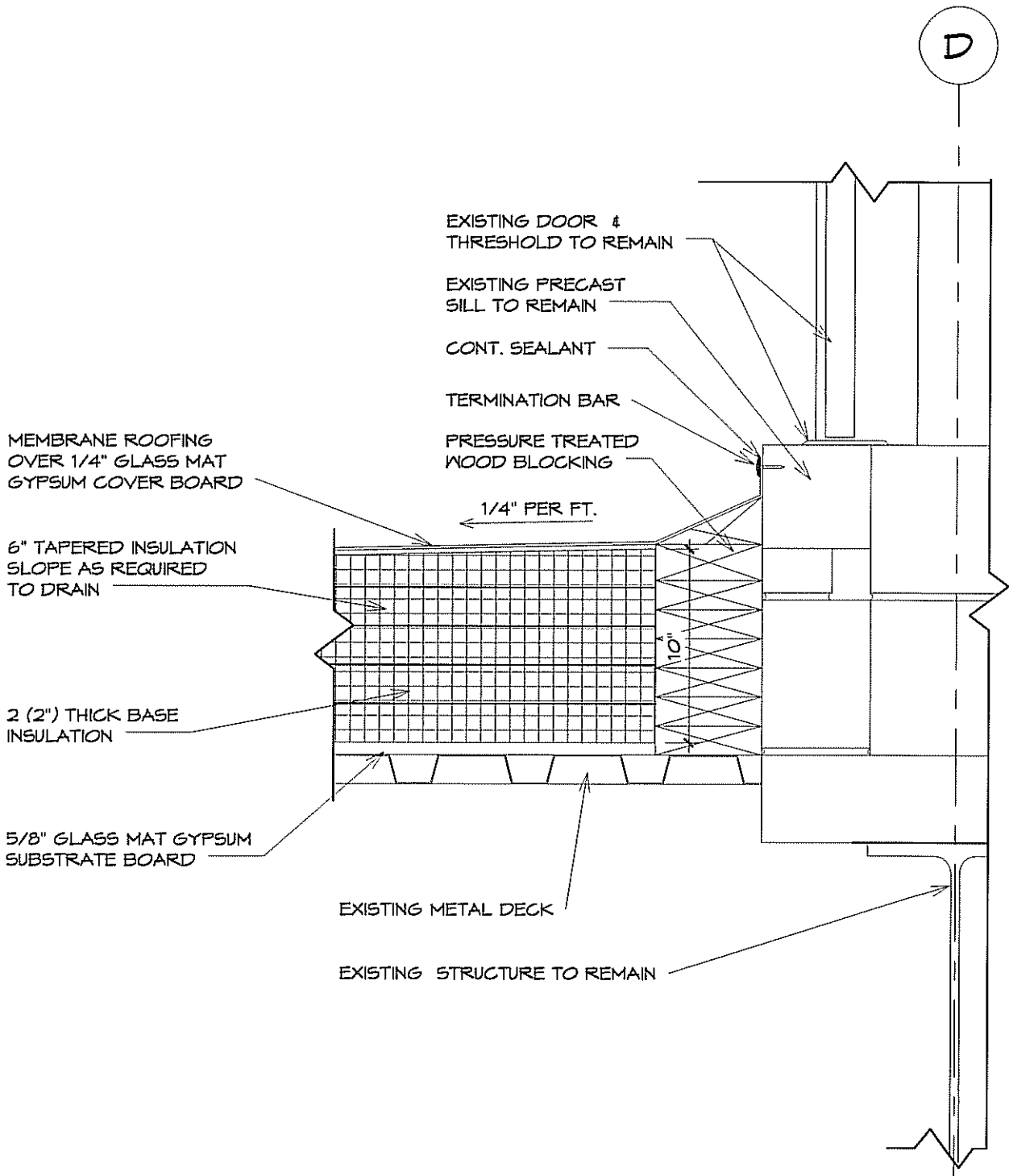
ROOF DETAIL

SCALE: 1 1/2" = 1'-0"

PHASE 2 - CONSTRUCTION DOCUMENTS
3395/ ALTERATIONS TO HACC CENTRAL
ADMINISTRATION BUILDING/ DECEMBER 10, 2012
MURRAY ASSOCIATES ARCHITECTS, P.C.

ADDENDUM #4 - JANUARY 11, 2013

RD-7



ROOF DETAIL

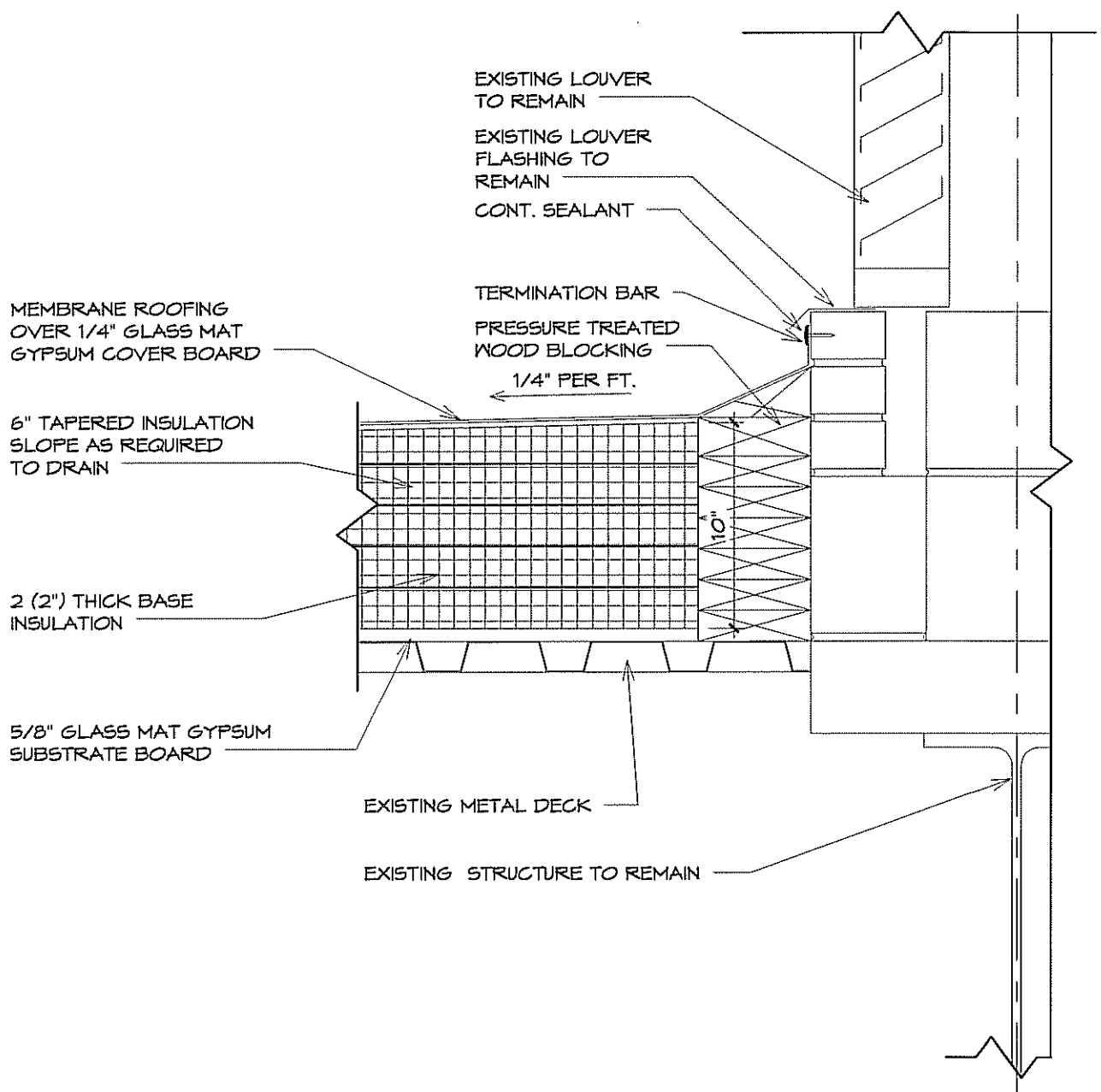
SCALE: 1 1/2" = 1'-0"

PHASE 2 - CONSTRUCTION DOCUMENTS
 3395/ ALTERATIONS TO HACC CENTRAL
 ADMINISTRATION BUILDING/ DECEMBER 10, 2012
 MURRAY ASSOCIATES ARCHITECTS, P.C.

ADDENDUM #4 - JANUARY 11, 2013

RD-7A

D



EXISTING LOUVER TO REMAIN

EXISTING LOUVER FLASHING TO REMAIN

CONT. SEALANT

TERMINATION BAR

PRESSURE TREATED WOOD BLOCKING

1/4" PER FT.

MEMBRANE ROOFING OVER 1/4" GLASS MAT GYPSUM COVER BOARD

6" TAPERED INSULATION SLOPE AS REQUIRED TO DRAIN

2 (2") THICK BASE INSULATION

5/8" GLASS MAT GYPSUM SUBSTRATE BOARD

EXISTING METAL DECK

EXISTING STRUCTURE TO REMAIN

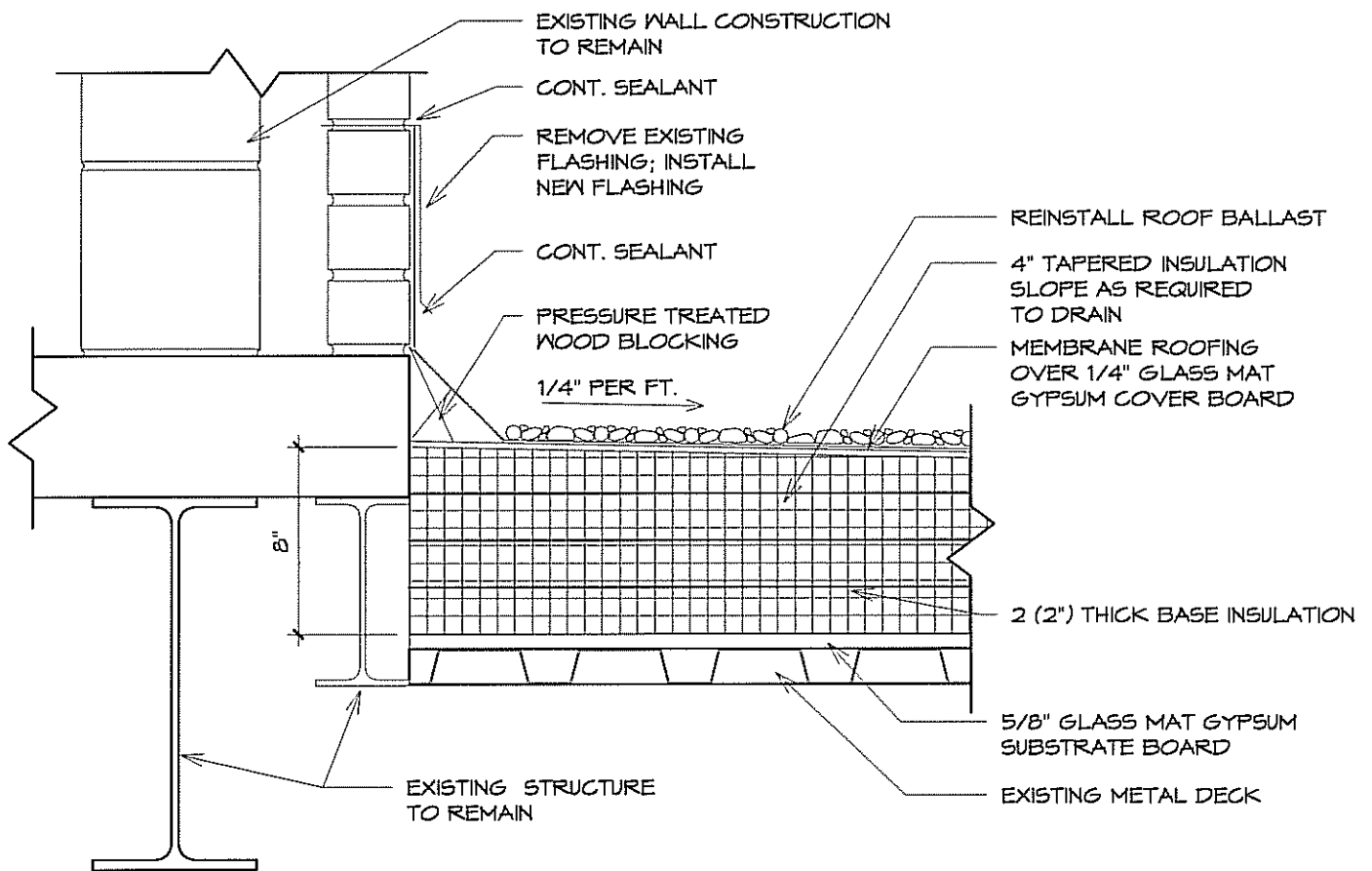
ROOF DETAIL

SCALE: 1 1/2" = 1'-0"

PHASE 2 - CONSTRUCTION DOCUMENTS
3395/ ALTERATIONS TO HACC CENTRAL
ADMINISTRATION BUILDING/ DECEMBER 10, 2012
MURRAY ASSOCIATES ARCHITECTS, P.C.

ADDENDUM #4 - JANUARY 11, 2013

RD-7B



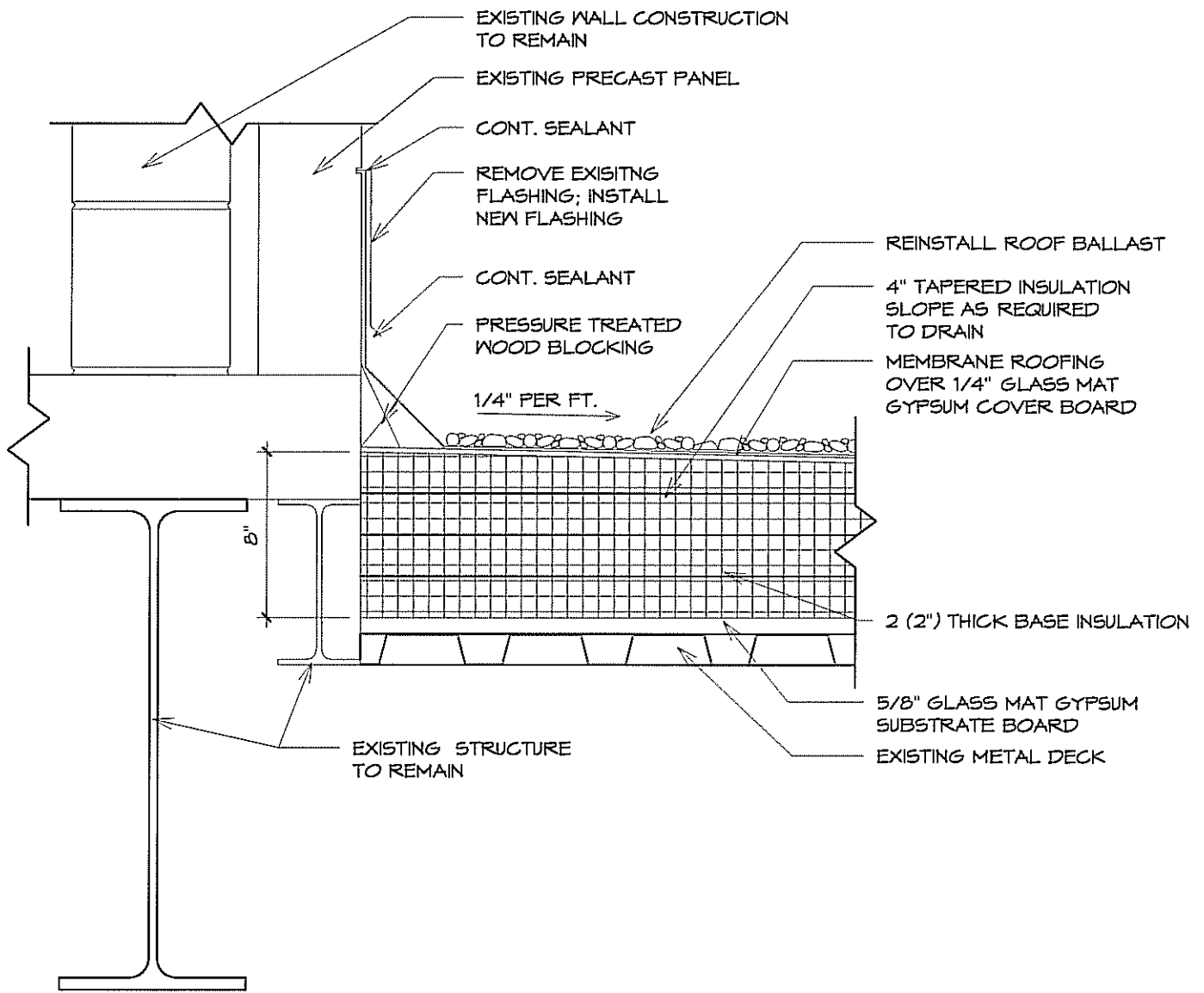
ROOF DETAIL

SCALE: 1 1/2" = 1'-0"

PHASE 2 - CONSTRUCTION DOCUMENTS
 3395/ ALTERATIONS TO HACC CENTRAL
 ADMINISTRATION BUILDING/ DECEMBER 10, 2012
 MURRAY ASSOCIATES ARCHITECTS, P.C.

ADDENDUM #4 - JANUARY 11, 2013

RD-8



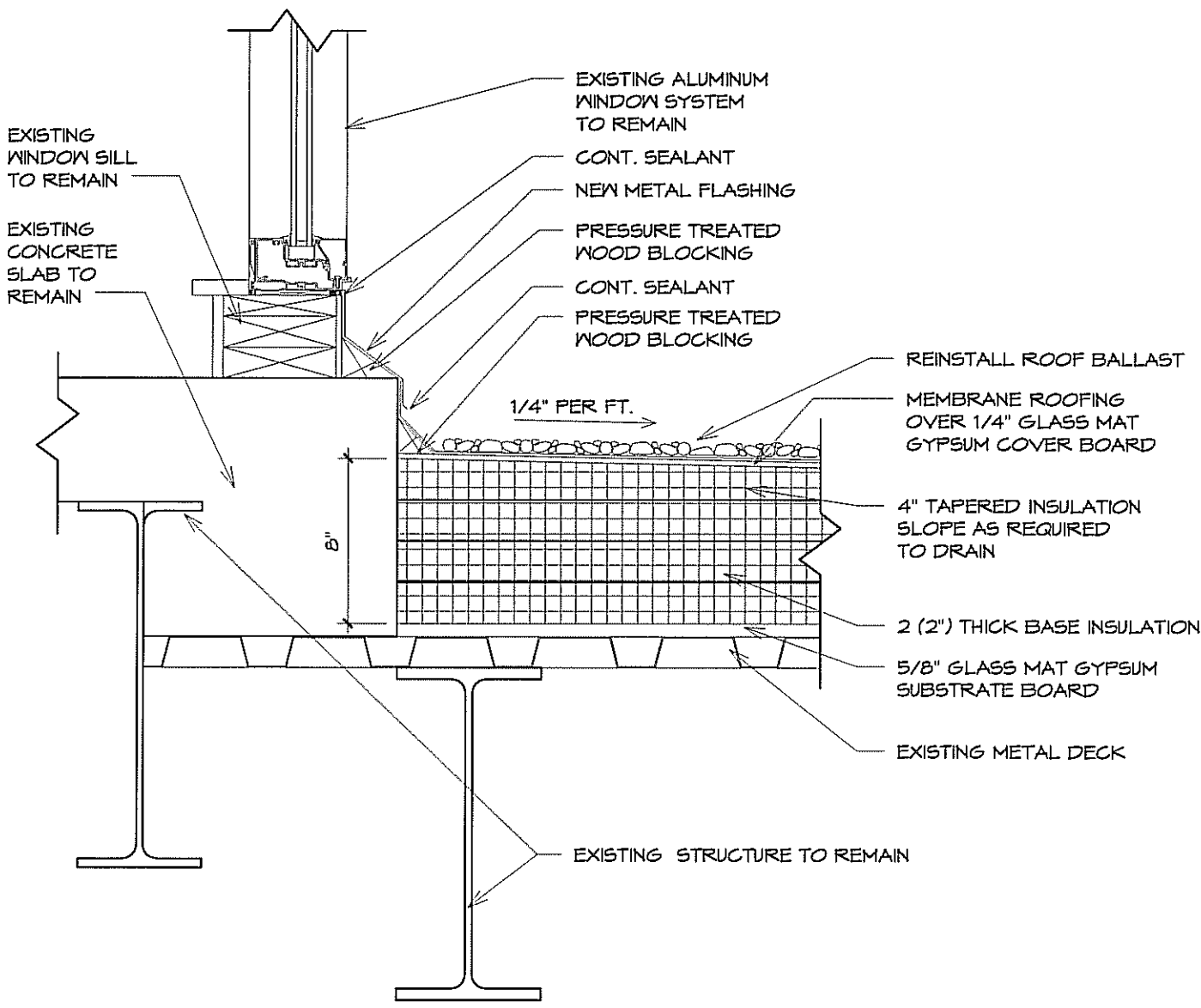
ROOF DETAIL

SCALE: 1 1/2" = 1'-0"

PHASE 2 - CONSTRUCTION DOCUMENTS
 3395/ ALTERATIONS TO HACC CENTRAL
 ADMINISTRATION BUILDING/ DECEMBER 10, 2012
 MURRAY ASSOCIATES ARCHITECTS, P.C.

ADDENDUM #4 - JANUARY 11, 2013

RD-8A



ROOF DETAIL

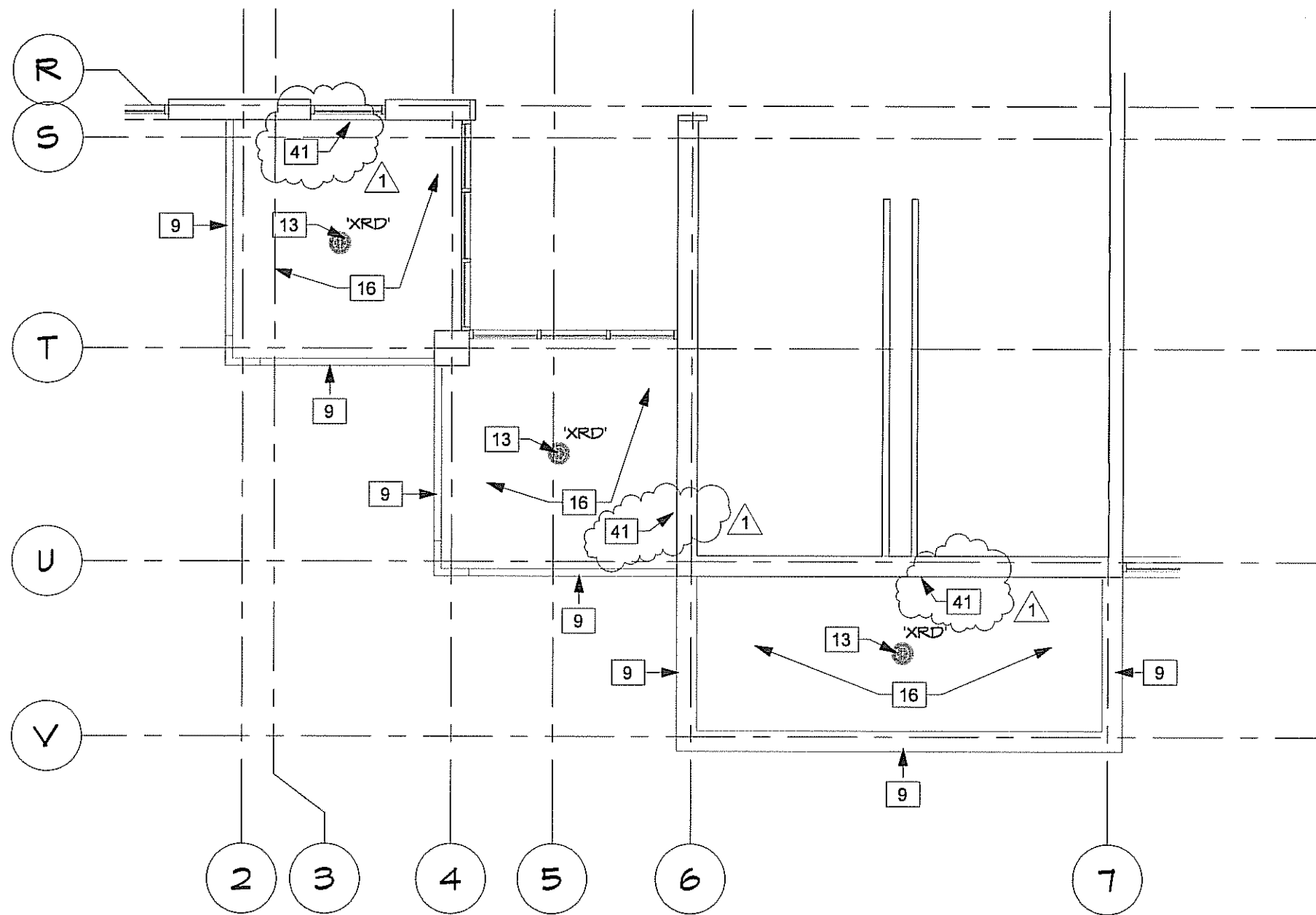
SCALE: 1 1/2" = 1'-0"

PHASE 2 - CONSTRUCTION DOCUMENTS
 3395/ ALTERATIONS TO HACC CENTRAL
 ADMINISTRATION BUILDING/ DECEMBER 10, 2012
 MURRAY ASSOCIATES ARCHITECTS, P.C.

ADDENDUM #1 - DECEMBER 21, 2012

ADDENDUM #4 - JANUARY 11, 2013

RD-9



PARTIAL LARGE SCALE SECOND FLOOR DEMOLITION PLAN - SECTION B

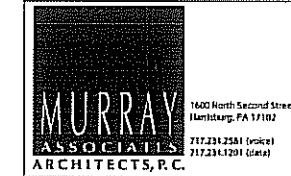
SCALE: 1/8" = 1'-0"

(REF. TO DWG.X2.1)

Revisions		
No.	Date	Description
1	1/11/13	ADDENDUM #4

THE CONTRACTOR SHALL VERIFY ALL DIMENSIONS AND EXISTING CONDITIONS AT THE SITE BEFORE PROCEEDING WITH EACH PHASE OF HIS WORK. THIS DRAWING, AS AN INSTRUMENT OF SERVICE, IS AND SHALL REMAIN THE PROPERTY OF THE ARCHITECT.

© Murray Associates Architects, P.C.
 CONSULTANT: OWNERS REPRESENTATIVE
 EASTERN PCM, LLC
 645 N. 12TH STREET
 SUITE 200
 LEMOYNE, PA 17045
 717-239-3516



ALTERATIONS TO HAGG
 CENTRAL ADMINISTRATION
 BUILDING
 HARRISBURG, PA

PARTIAL LARGE SCALE
 SECOND FLOOR DEMO
 PLAN - SECTION B

CONSTRUCTION
 DOCUMENTS

DRAWN BY: TAB	CHECKED BY: BHD
------------------	--------------------

DATE: DECEMBER 10, 2012

PROJECT NUMBER:
3395

DRAWING NUMBER:
SKA-3
 PHASE 2

