



## **ADDENDUM #1**

**October 7, 2011**

Re: Harrisburg Area Community College  
Blocker Hall Room 224 – Casework Modifications  
Solicitation #RFB12-04

From: Eastern PCM, LLC  
Construction Manager – HACC  
645 N. 12<sup>th</sup> Street, Suite 200  
Lemoyne, PA 17043

To: All Planholders

---

This Addendum is hereby made part of the Plans and Project Manual dated September 29, 2011 for the above referenced project. The provisions of this Addendum are intended to supplement the provisions of the Plans and Project Manual and/or supersede them where contradictory thereto.

This Addendum contains changes to the requirements of the Plans and Project Manual. Such changes shall be incorporated into the Plans and Project Manual and shall apply to work with the same meaning and force as if they had been included in the original Plans and Project Manual. Where this Addendum modifies a portion of a paragraph or phrase of the Project Manual, the remaining unmodified portion of the paragraph or phrase shall remain in force.

The conditions and terms of the Plans and Project Manual shall govern work described in this Addendum. Whenever the conditions of work, or the quality or quantity of materials or workmanship are not fully described in this Addendum, the conditions of work etc. included in the Plans and Project Manual for similar items of work shall apply to the work described in this Addendum. If no similar items of work are included in the Plans and Project Manual, the quality of material and workmanship shall be subject to the written acceptance of the Architect.

### **1.1 CHANGES TO THE PROJECT MANUAL**

A. Section 00100 – Invitation to Bid

**REVISE** to Read:

“HACC will receive sealed bids for the work at Three Penn Center, 349 Wiconisco Street, Harrisburg, PA 17110 in Room 223 until 2:00pm on October 13, 2011.”

## 1.2 CHANGES TO THE DRAWINGS

### A Drawing X2.1 – Demolition Plan, Demolition Section & Demolition notes

Demolition notes have been revised or added as follows:

1. Note #4 shall read: Remove existing work tops. Save and reuse as many sections as required for new Instructor's desk. Remaining tops shall be salvaged and turned over to the owner.
2. Note # 10 shall read: Remove and re-install existing drying rack in same location after work surface is installed.
3. Added Note #12 shall read: Remove existing base cabinet and retain for re-installation as part of the new Instructor's Desk.
4. Typical Demolition Elevation 1 - Waste line and trap at sink shall be removed.
5. Typical Demolition Elevation 2 - Add note #11 to elevation at center of casework behind sink. Waste line and trap at sink shall be removed.
6. Typical Demolition Elevation 3 - Add note #12 to elevation at 18" wide drawer base cabinet.
7. Demolition Work Surface #4 - Add note #12 to center of plan. Re-direct arrow from note #9 to left side of work surface.

### B. Drawing A2.1 – New Floor Plan, New Section, & Construction Notes

1. Elevation 1 - New waste and trap connect into existing piping in the floor.
2. Elevation 2 - New waste and trap connect into existing piping in the floor.
3. Elevation 5 - New waste and trap connect into existing piping in the floor.
4. Elevation 9 - Remove one A&M Hardware bracket next to end panel.
5. New Work Surface #4 - Delete new gas outlet from left side of work surface.
6. New Work Surface #4 Plan - Has been revised. See SKA-2 attached.
7. Interior Elevations #3 & #5 have been revised. See SKA-2 attached.
8. New Instructors Desk Plan - Has been revised. See SKA-1 attached.

C. Drawing A8.1 – Casework Details and Notes

1. Detail MWD-2 – Show new cup sink rotated so section is through longitudinal axis.
2. Detail MWD-7 – Show 1” over hang on all countertop edges. Show 4” vinyl base on both exposed sides of new casework.
3. Detail MWD-8 – Show 1” over hang on all countertop edges. Show 4” vinyl base on both exposed sides of new casework.
4. Detail MWD-9 – Show 1” over hang on all countertop edges. Show 4” vinyl base on both exposed sides of new casework.
5. Detail MWD-10 – Show 1” over hang on all countertop edges. Show 4” vinyl base on both exposed sides of new casework.

D. P1.1 – Plumbing Plan, Notes and Details

1. Partial Floor Plan has been revised. See SKP-1 attached.
2. Partial Floor Plan has been revised. See SKP-2 attached.

E. E1.1 – Electrical Plan, Notes and Details

Partial Floor Plan has been revised. See SKE-1 attached.

**1.3 PRE-BID MEETING MINUTES**

Meeting minutes from the Pre-Bid Meeting held on October 4, 2011 are attached and are a part of this Addendum. In the event of a conflict between the information contained in the Pre-Bid Meeting Notes and the Drawings, Specifications and responses to questions contained in this Addendum, the latter shall take precedence.

**END OF ADDENDUM**



Please sign and return this page, via fax, to Eastern PCM, LLC at (717) 233-1666 indicating receipt of this Addendum.

**Blocker Hall Room 224 Casework Modifications  
SOLICITATION #RFB12-04**

Addendum # \_\_\_\_\_ has been received.

**Company:** \_\_\_\_\_  
Print Company Name

**Received By:** \_\_\_\_\_  
Print Name Signature

**Date:** \_\_\_\_\_

**Please check one:**

- \_\_\_\_\_ We are bidding as a prime contractor
- \_\_\_\_\_ We are not bidding
- \_\_\_\_\_ We are a sub-contractor

REVISIONS:		
△	10/6/11	ADDENDUM #1

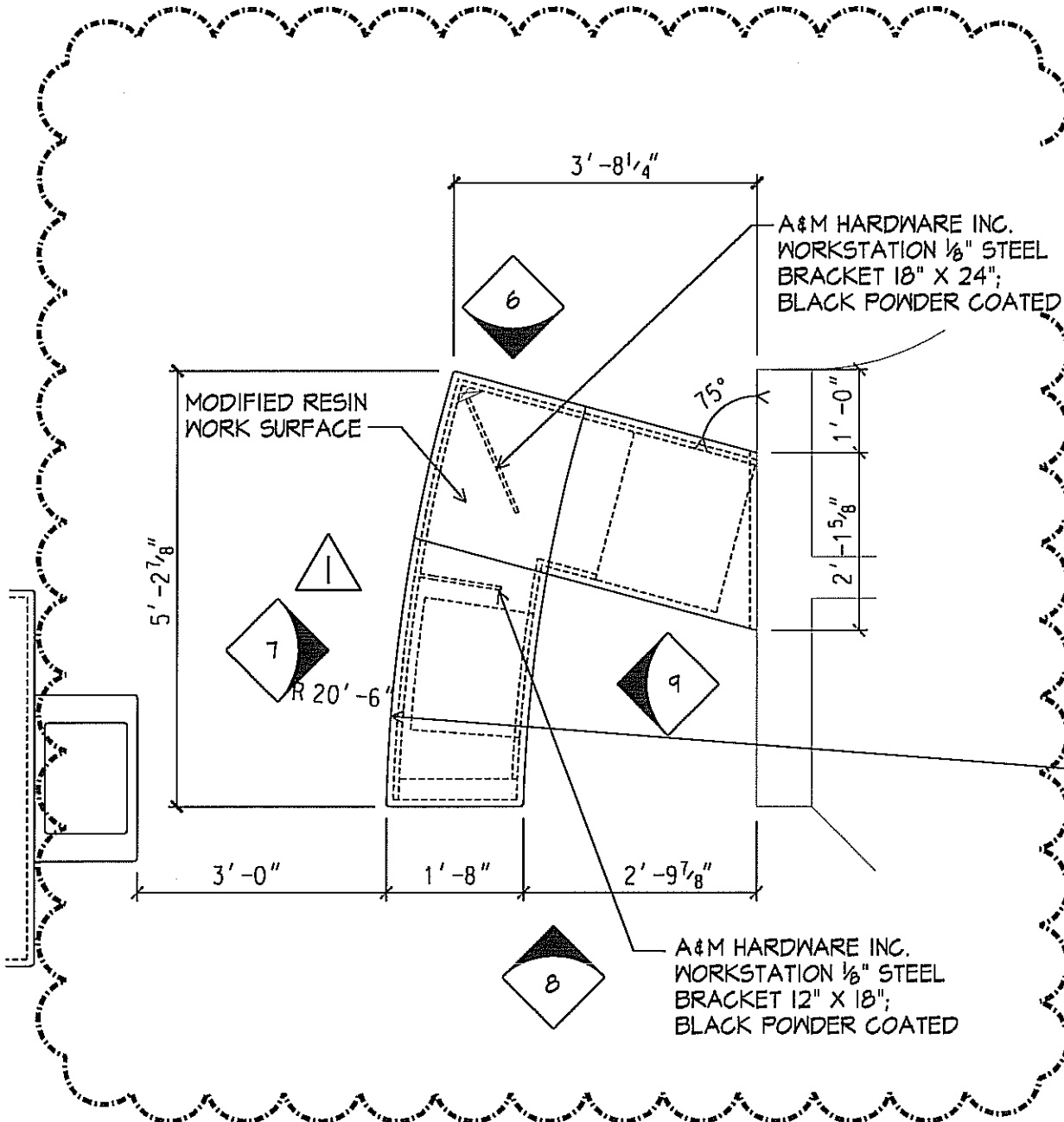
THE CONTRACTOR SHALL VERIFY ALL DIMENSIONS AND EXISTING CONDITIONS AT THE SITE BEFORE PROCEEDING WITH EACH PHASE OF HIS WORK. THIS DRAWING AS AN INSTRUMENT OF SERVICE, IS AND SHALL REMAIN THE PROPERTY OF THE ARCHITECT.

© Murray Associates Architects, P.C.

CONSULTANT: H/E/P ENGINEER

GATTER & DIEHL

100 HERRING CREEK BOULEVARD  
MECHANICSBURG, PA 17050  
717-651-4100



**MURRAY ASSOCIATES ARCHITECTS, P.C.**  
1600 North Second Street  
Harrisburg, PA 17102  
717-234-2341 (voice)  
717-234-1121 (fax)

**ALTERATIONS  
LABORATORY  
BLOCKER 224  
HARRISBURG AREA  
COMMUNITY COLLEGE**

**CONSTRUCTION DOCUMENTS**

DRAWN BY: TRD      CHECKED BY: BHD

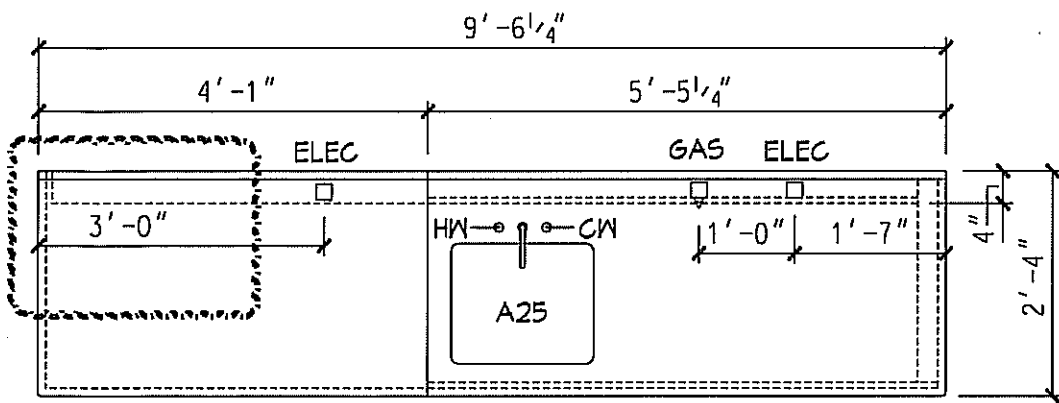
PLOT NO.: SKA-1      DATE: 10/6/11

PROJECT NO.: **3347**

DRAWING NO.: **SKA-1**

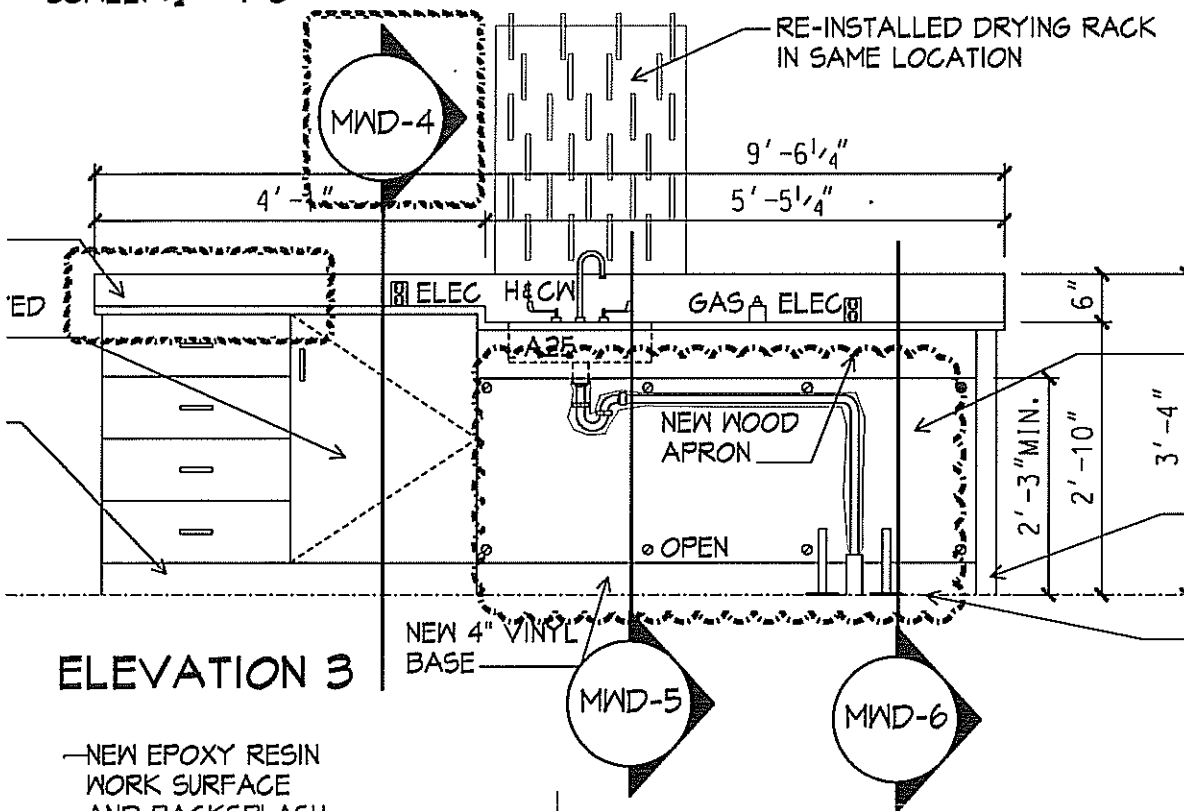
**NEW INSTRUCTOR'S DESK**

SCALE: 1/2" = 1'-0"



## NEW WORK SURFACE #4

SCALE: 1/2" = 1'-0"



### ELEVATION 3

NEW EPOXY RESIN WORK SURFACE AND BACKSPLASH

NEW WOOD CASEWORK END-PANEL

CONFIGURE NEW PIPING TO RUN INTO EXISTING DRAINLINE SEE PLUMBING DRAWING

LINE OF REMOVABLE WOOD PANEL BEYOND

NEW 4" VINYL BASE

NEW VINYL COMPOSITION TILE

### ELEVATION 5

## INTERIOR ELEVATIONS

SCALE: 1/2" = 1'-0"

REVISIONS:		
NO.	DATE	DESCRIPTION

THE CONTRACTOR SHALL VERIFY ALL DIMENSIONS AND EXISTING CONDITIONS AT THE SITE BEFORE PROCEEDING WITH EACH PHASE OF HIS WORK. THIS DRAWING AS AN INSTRUMENT OF SERVICE, IS AND SHALL REMAIN THE PROPERTY OF THE ARCHITECT.

© Murray Associates Architects, P.C.

CONSULTANT: M / E / P ENGINEER

### GATTER & CREW

100 POND CREEK BOULEVARD  
MECHANICSBURG, PA 17050  
717-657-4300

**MURRAY ASSOCIATES ARCHITECTS, P.C.**  
1602 North Second Street  
Harrisburg, PA 17112  
717-234-2381 (voice)  
717-234-1201 (fax)

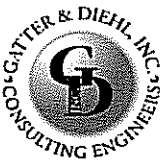
**ALTERATIONS  
LABORATORY  
BLOCKER 224  
HARRISBURG AREA  
COMMUNITY COLLEGE**

### CONSTRUCTION DOCUMENTS

DRAWN BY TRD	CHECKED BY BHD
PLOT NO. SKA-2	DATE 10/6/11

PROJECT NO.  
**3347**

DRAWING NO.  
**SKA-2**

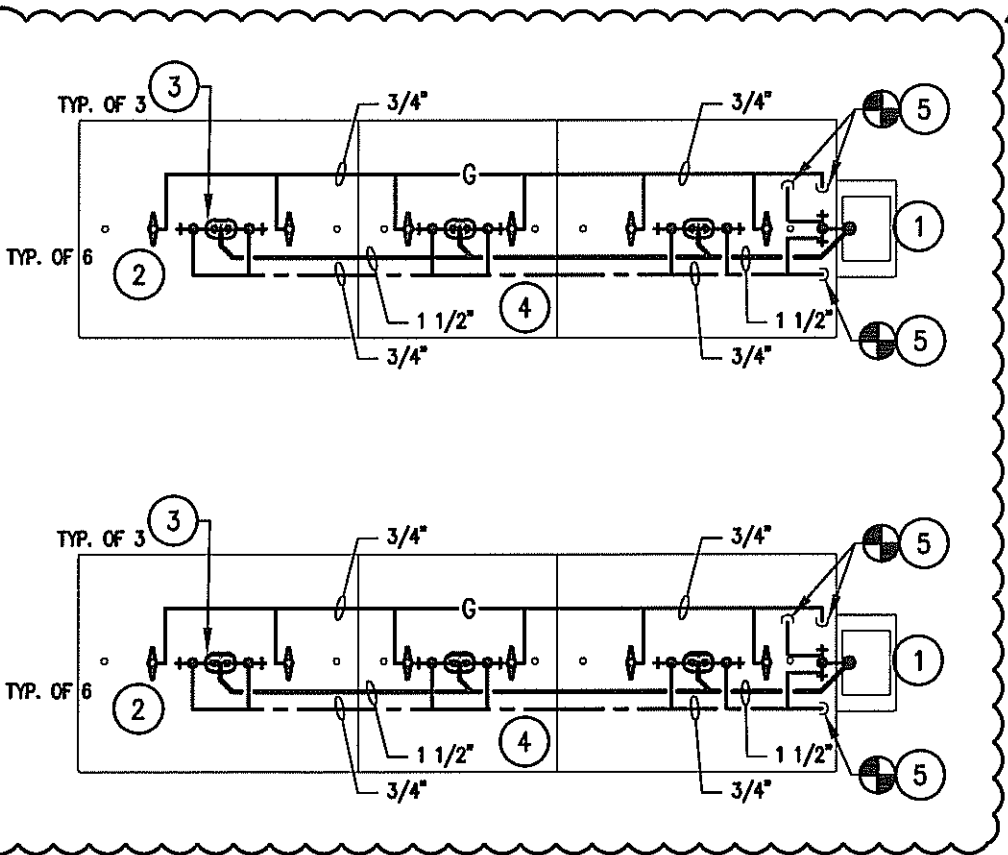
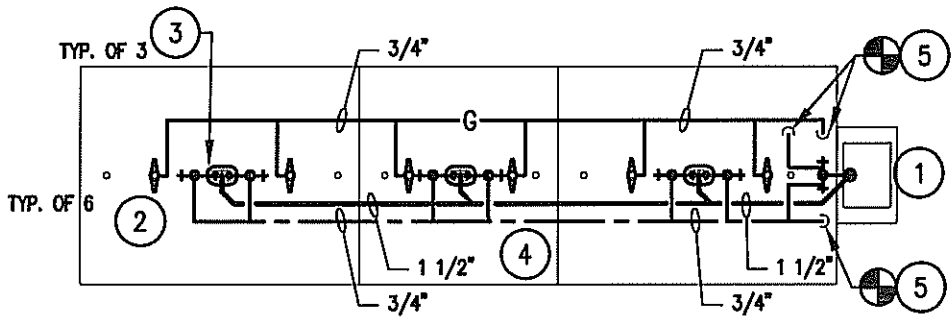

**Gatter & Diehl, Inc.**  
 Consulting Engineers  
 2408 Park Drive  
 Harrisburg, Pa. 17110  
 Phone: 717.657.9700  
 Fax: 717.657.9705  
 5 Corporate Drive  
 Suite 105 - Bedford, Pa. 15522  
 Phone: 814.623.5111  
 Fax: 814.623.2399  
 www.GatterDiehl.com  
 Project # 211054.00

REVISIONS:		
Δ	10/05/11	ADDENDUM #1

THE CONTRACTOR SHALL VERIFY ALL DIMENSIONS AND EXISTING CONDITIONS AT THE SITE BEFORE PROCEEDING WITH EACH PHASE OF HIS WORK. THIS DRAWING AS AN INSTRUMENT OF SERVICE, IS AND SHALL REMAIN THE PROPERTY OF THE ARCHITECT.

© Murray Associates Architects, P.C.

CONSULTANT: H/E/P ENGINEER  
**GATTER & DIEHL, INC.**  
 100 MINDING CREEK BOULEVARD  
 MECHANICSBURG, PA 17050  
 717-657-1100



**PARTIAL FLOOR PLAN – BLOCKER ROOM 224**  
**PLUMBING**  
 SCALE: 3/8" = 1'-0"



 1825 North Second Street  
 Harrisburg, PA 17112  
 717-234-2281 (local)  
 717-234-1301 (toll free)


**ALTERATIONS  
 LABORATORY  
 BLOCKER 224  
 HARRISBURG AREA  
 COMMUNITY COLLEGE**

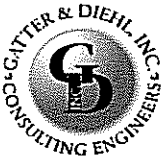
**PARTIAL FLOOR PLAN  
 BLOCKER ROOM 224  
 PLUMBING**

**CONSTRUCTION DOCUMENTS**

DRAWN BY JR	CHECKED BY RK
PLOT NO.	DATE OCT. 3, 2011

PROJECT NO.  
3347

DRAWING NO.  
SKP-1



## Gatter & Diehl, Inc.

*Consulting Engineers*

2400 Park Drive  
Harrisburg, Pa. 17110  
Phone: 717.657.9700  
Fax: 717.657.9705

5 Corporate Drive  
Suite 105 - Bedford, Pa. 15522  
Phone: 814.623.5111  
Fax: 814.623.2299

www.GatterDiehl.com

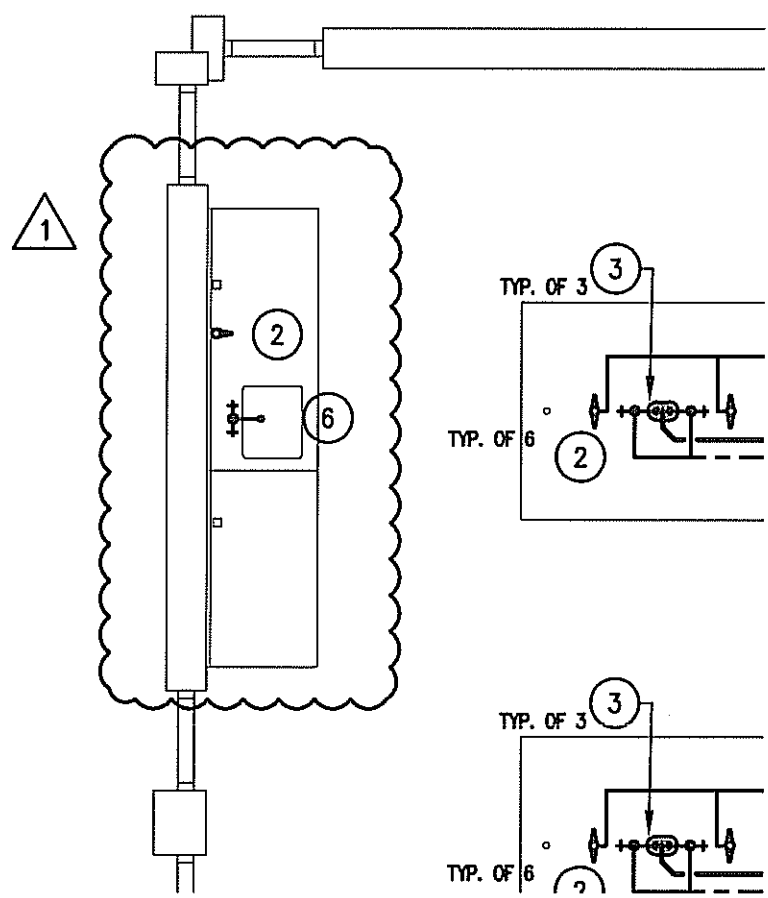
Project # 211054.00

REVISIONS:		
Δ	10/05/11	ADDENDUM #1

THE CONTRACTOR SHALL VERIFY ALL DIMENSIONS AND EXISTING CONDITIONS AT THE SITE BEFORE PROCEEDING WITH EACH PHASE OF HIS WORK. THIS DRAWING AS AN INSTRUMENT OF SERVICE, IS AND SHALL REMAIN THE PROPERTY OF THE ARCHITECT.

© Murray Associates Architects, P.A.


CONSULTANT: H/E/P ENGINEER  
**GATTER & DIEHL, INC.**  
100 WINDING CREEK BOULEVARD  
MECHANICSBURG, PA 17050  
717-657-1700



PARTIAL FLOOR PLAN – BLOCKER ROOM 224

PLUMBING

SCALE: 3/8" = 1'-0"



1800 North Second Street  
Harrisburg PA 17102  
717.234.2581 (office)  
717.234.1201 (fax)

ALTERATIONS  
LABORATORY  
BLOCKER 224  
HARRISBURG AREA  
COMMUNITY COLLEGE

PARTIAL FLOOR PLAN  
BLOCKER ROOM 224  
PLUMBING

CONSTRUCTION DOCUMENTS

DRAWN BY JR.	CHECKED BY RK.
PLOT NO.	DATE OCT. 5, 2011

PROJECT NO.  
3347

DRAWING NO.  
SKP-2





**Gatter & Diehl, Inc.**  
Consulting Engineers

2400 Park Drive  
Harrisburg, Pa. 17110  
Phone: 717.657.9700  
Fax: 717.657.9705

**Gatter & Diehl, Inc.**  
Consulting Engineers

5 Corporate Drive  
Suite 105 - Bedford, Pa. 15522  
Phone: 814.623.5111  
Fax: 814.623.2299

www.GatterDiehl.com

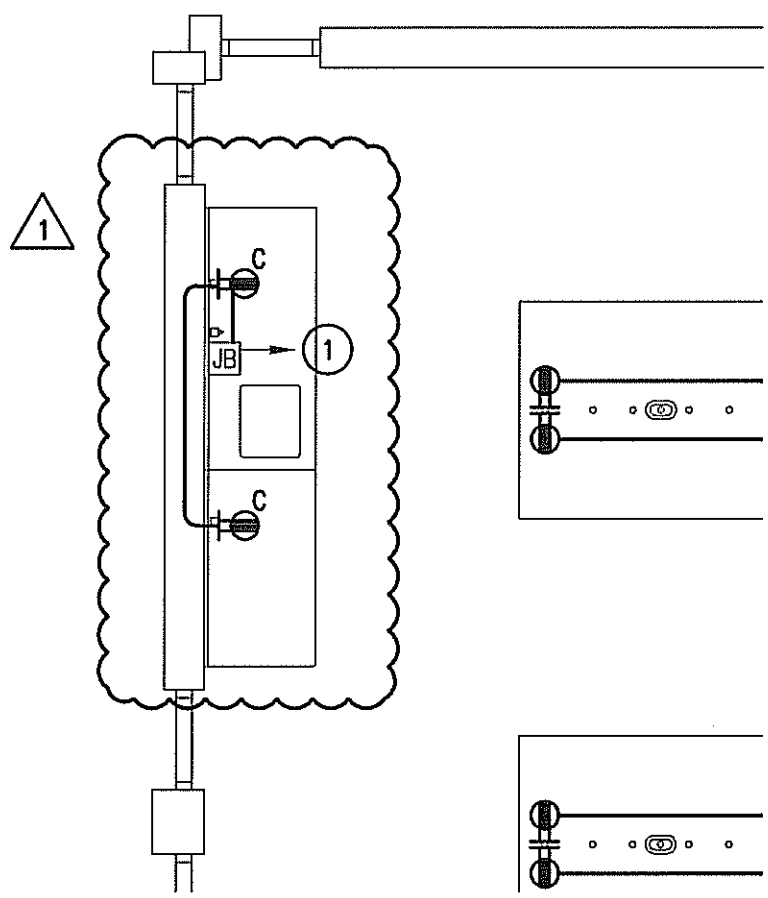
Project # 211054.00

REVISIONS:		
Δ	10/05/11	ADDENDUM #1

THE CONTRACTOR SHALL VERIFY ALL DIMENSIONS AND EXISTING CONDITIONS AT THE SITE BEFORE PROCEEDING WITH EACH PHASE OF HIS WORK. THIS DRAWING IS AN INSTRUMENT OF SERVICE, IS AND SHALL REMAIN THE PROPERTY OF THE ARCHITECT.

© Murray Associates Architects, P.C.

CONSULTANT: M/E/P ENGINEER  
GATTER & DIEHL, INC.  
100 HERRING CREEK BOULEVARD  
HARRISBURG, PA 17030  
717-657-4700



**PARTIAL FLOOR PLAN — BLOCKER ROOM 224**  
**ELECTRICAL**  
SCALE: 3/8" = 1'-0"



1800 North Second Street  
Harrisburg, PA 17102  
717-234-2281 (local)  
717-234-1207 (toll-free)

**ALTERATIONS  
LABORATORY  
BLOCKER 224  
HARRISBURG AREA  
COMMUNITY COLLEGE**

**PARTIAL FLOOR PLAN  
BLOCKER ROOM 224  
ELECTRICAL**

**CONSTRUCTION DOCUMENTS**

DRAWN BY RH	CHECKED BY JG.
PLOT NO.	DATE OCT. 9, 2011

PROJECT NO.  
**3347**

DRAWING NO.  
**SKE-1**

Harrisburg Area Community College  
Casework Modifications to Blocker Hall Room 224  
Solicitation #RFB12-04  
Harrisburg Campus

Pre-Bid Meeting

October 4, 2011  
10:30 am

**Meeting Minutes**

---

**Attendees**

Bob Finley – HACC	Mike Gosik – A.P. Williams
Jennifer Baar – HACC	Don Beinhaur – McCoy Brothers
Dan Clark – HACC	Jeff Heindel – Hogg Construction
Tom Dobrzyn – Murray Associates	Bill Raves – Titan Construction
Mike Frye – Murray Associates	Greg Lamay – Eastern PCM (Author)
Adam Rickard – Gatter and Diehl	

---

1.0 Introduction of Team

- |                            |                                                                                                                                                                   |
|----------------------------|-------------------------------------------------------------------------------------------------------------------------------------------------------------------|
| a) Owner                   | Harrisburg Area Community College<br>Joseph Wojtysiak - Campus Senior Director, Facilities<br>(not present)<br>Bob Finley – Campus Facilities Project Coordinator |
| b) Architect               | Murray Associates<br>Michael Frye – Principal<br>Tom Dobrzyn – Project Architect                                                                                  |
| c) Construction<br>Manager | Eastern PCM, LLC<br>Greg Lamay – Senior Project Manager                                                                                                           |

1.1 EPCM reviewed the bid form and bid documents found in specification section 00410. Bidders were instructed that the following forms must be submitted with the bid:

- Completed Bid Form
- Non-Collusion Affidavit
- MBE/WBE Utilization Form
- Bid Bond (the project value is greater than \$10,000)

1.2 Bidders were instructed by EPCM that the project and associated bid amount must include all applicable sales taxes.

1.3 The bid date is October 13, 2011 at 2:00pm. In room 223. Bids will be opened and read aloud in the HACC Purchasing Department's new location: Three Penn Center, 349 Wiconisco Street, Room 224, Harrisburg, PA 17110.

1.4 Project Schedule and Milestones:

Bids Due – October 13, 2011 at 2:00pm  
Contract Award – November 8, 2011 subject to HACC Board of Trustees Approval  
Notice to Proceed – On or about November 14, 2011 conditioned upon return of fully executed contract from Contractor  
Substantial Completion – January 5, 2012

1.5 Addendum #1 will be issued on or about October 6, 2011. A second addendum will be issued on October 11, 2011 if required. The last day for questions is October 7, 2011. All questions must be submitted in writing through EPCM's office. Only those planholders who purchased plans and specifications directly from Eastern PCM will receive addenda directly from EPCM.

1.6 This project is subject to Pennsylvania Department of Labor & Industry Prevailing Wage Rates. Project specific wage rates are listed in Specification Section 00820.

1.7 The Owner will provide the General Building Permit. The successful bidder is responsible for all trade specific permits, associated costs and inspections (i.e. electrical, plumbing) required for projects taking place in the City of Harrisburg.

1.8 All work will be performed as a Single Prime Contract.

1.9 The work will be performed under a Single Prime Contract and consists of modifying existing casework by removing elevated reagent shelves, maintaining the utilities in the work benches and replacing the basins at the end of each work bench. New surface mounted fixtures will be required on the benches for air, gas and water. A new teacher station will be installed.

1.10 Staging areas will be provided by HACC.

1.11 Work Hours for disruptive demolition activities must be coordinated with HACC. Final exams are scheduled to be complete on December 16, 2011. It is anticipated that the actual on-site modifications will be performed during the mid semester break. Measurements and field visits prior to December 16, 2011 must be coordinated with HACC through EPCM.

1.11 If requested, a second walkthrough can be scheduled. Requests must go through EPCM and the time will be published in an Addendum.

---

Respectfully Submitted,  
Greg Lamay, Eastern PCM, LLC

The above summations are the interpretation of the author as to the items discussed and the decisions reached. Corrections or additions to these minutes are to be made in writing and sent to the attention of the author no later than 5 days after receipt; otherwise, these minutes will stand as written.

cc: All Attendees

---

