

CONSTRUCTION DRAWINGS

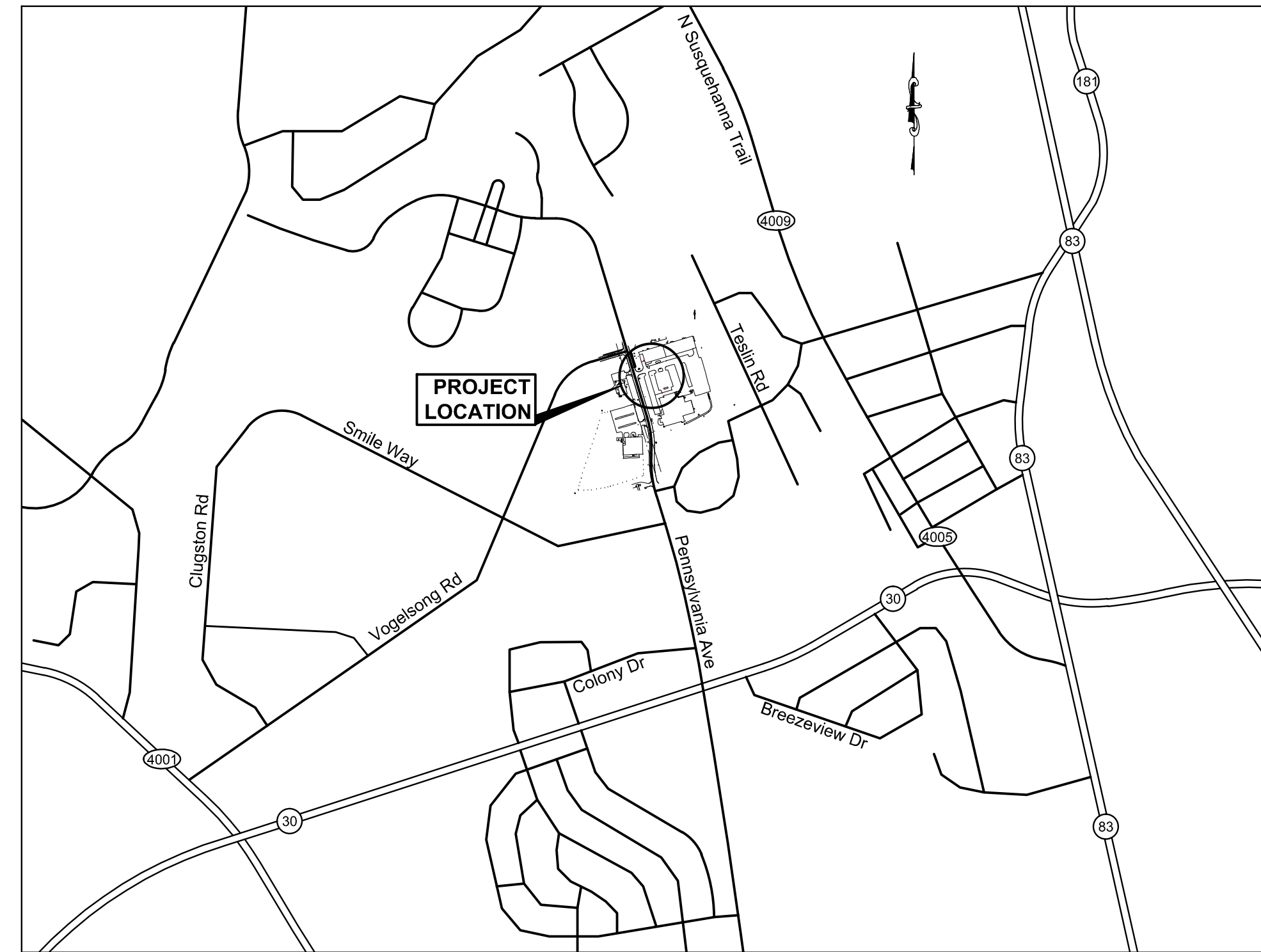
FOR

SANITARY SEWER LATERAL REPLACEMENT - GOODLING AND CYTEC BUILDINGS HARRISBURG AREA COMMUNITY COLLEGE - YORK CAMPUS

CITY OF YORK

YORK COUNTY, PENNSYLVANIA

AUGUST 19, 2014



VICINITY MAP
 SCALE: 1"=1000'

SCALE IN FEET

PROPOSED		EXISTING	
— 460 —	MAJOR CONTOUR	— 360 —	PROPERTY BOUNDARY
— 458 —	MINOR CONTOUR	— 350 —	10' CONTOUR
— S —	SANITARY SEWER	— 352 —	2' CONTOUR
— X —	6' HIGH VINYL FENCE	— BSL —	SETBACK LINE
⊙	SANITARY MANHOLE	— C —	CURB
○ CO	CLEANOUT CHAMBER	— F —	FENCE
⊗	VALVE	— OHE —	OVERHEAD ELECTRIC LINE
— FS —	18" FILTER SOCK	— E —	UNDERGROUND ELECTRIC LINE
[Pattern]	BITUMINOUS PAVEMENT	— T —	TELEPHONE
[Pattern]	CONCRETE PAVEMENT	— C —	COMMUNICATION
[Pattern]	ROCK CONSTRUCTION ENTRANCE	⊙	UTILITY POLE
[Pattern]	SLOPE PROTECTION (STRAW WITH NET) ECMB	— GUY —	GUY
⊙ IP	INLET PROTECTION - FILTER SOCK	*	LIGHT STANDARD
⊙ FBIP	INLET PROTECTION - FILTER BAG	c.o.o	CLEANOUT
— LOD —	LIMIT OF DISTURBANCE	⊙	VALVE
		⊙ IPF	IRON PIN
		⊙ RCS	CONCRETE MONUMENT
		⊙ CMS	REBAR & CAP SET
		⊙	CONCRETE MONUMENT W/BRASS DISC
		⊙	TREE OR SHRUB
		— OU —	OVERHEAD UTILITY
		— S —	STORM SEWER AND INLET
		— S —	SANITARY SEWER AND MANHOLE
		— W —	STORM SEWER PIPE AND MANHOLE
		— W —	WATER LINE
		FH ⊙	FIRE HYDRANT
		SSMH	SANITARY SEWER MANHOLE

SHEET INDEX	
SHEET NO.	SHEET TITLE
G-001	TITLE SHEET
G-002	GENERAL NOTES
C-121	UTILITIES PLAN
C-201	PROFILES
C-501	CONSTRUCTION DETAILS
C-502	CONSTRUCTION DETAILS
C-503	CONSTRUCTION DETAILS
C-701	EROSION & SEDIMENTATION CONTROL PLAN
C-702	EROSION & SEDIMENTATION CONTROL NOTES
C-703	EROSION & SEDIMENTATION CONTROL NOTES
C-704	EROSION & SEDIMENTATION CONTROL DETAILS
C-705	EROSION & SEDIMENTATION CONTROL DETAILS

CONSTRUCTION MANAGER
 EASTERN PCM, LLC
 645 N. 12TH ST.
 LEMOYNE, PA 17043
 CONTACT: GREG LAMAY
 PHONE: 717-233-3816

OWNER - SITE
 HARRISBURG AREA COMMUNITY COLLEGE
 2010 PENNSYLVANIA AVE.
 YORK, PA 17404
 CONTACT: RON CLINE
 PHONE: 717-773-8783

This drawing is the property of Century Engineering and is prepared for the exclusive use of its clients at the location indicated. No other use is authorized or intended.

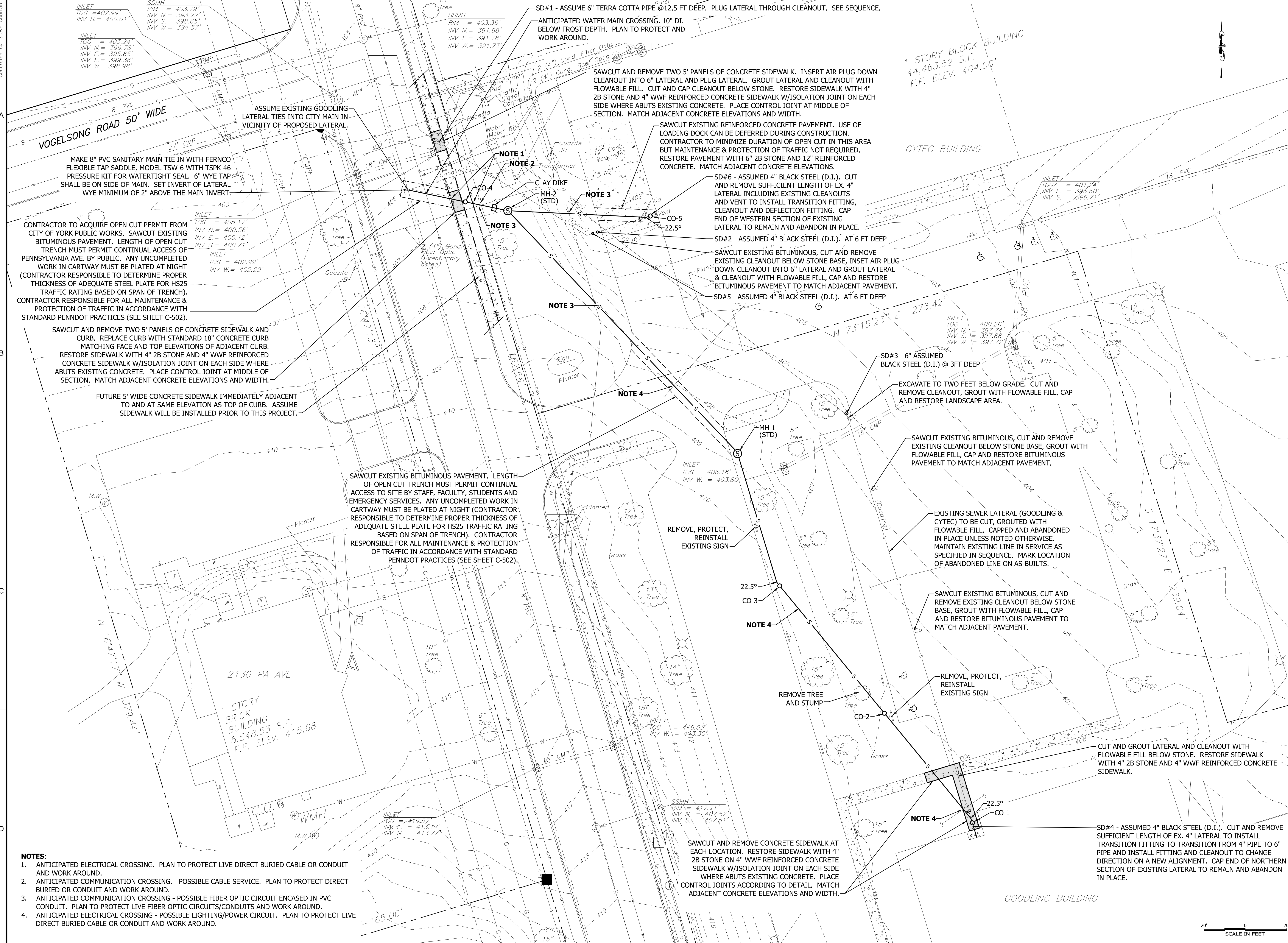
mmCENTURY
 ENGINEERING
 CONSULTING ENGINEERS - PLANNERS
 200 Airport Road, Capital City Airport
 New Cumberland, PA 17070
 Phone: (717) 901-7055 Fax: (717) 901-7059
 www.centuryeng.com
 © 2011 ALL RIGHTS RESERVED

NO.	DATE	ISSUE

CONSTRUCTION DRAWINGS
 FOR
 SANITARY SEWER LATERAL REPLACEMENT
 GOODLING AND CYTEC BUILDINGS
HARRISBURG AREA COMMUNITY COLLEGE - YORK CAMPUS
 CITY OF YORK
 YORK COUNTY, PENNSYLVANIA

SHEET TITLE
TITLE SHEET

ISSUE DATE	08/19/14
DRAWN	DESIGNED
NHN	TJP
CHECKED	TJP
SCALE	SHEET NO.
N/A	G-001
PROJECT NO.	143026.00



- NOTES:**
1. ANTICIPATED ELECTRICAL CROSSING. PLAN TO PROTECT LIVE DIRECT BURIED CABLE OR CONDUIT AND WORK AROUND.
 2. ANTICIPATED COMMUNICATION CROSSING. POSSIBLE CABLE SERVICE. PLAN TO PROTECT DIRECT BURIED OR CONDUIT AND WORK AROUND.
 3. ANTICIPATED COMMUNICATION CROSSING - POSSIBLE FIBER OPTIC CIRCUIT ENCASED IN PVC CONDUIT. PLAN TO PROTECT LIVE FIBER OPTIC CIRCUITS/CONDUITS AND WORK AROUND.
 4. ANTICIPATED ELECTRICAL CROSSING - POSSIBLE LIGHTING/POWER CIRCUIT. PLAN TO PROTECT LIVE DIRECT BURIED CABLE OR CONDUIT AND WORK AROUND.

This drawing is the property of Century Engineering and is prepared for the exclusive use of its clients at the location indicated. No other use is authorized or intended.

mmCENTURY
 ENGINEERING
 CONSULTING ENGINEERS - PLANNERS

200 Airport Road, Capital City Airport
 New Cumberland, PA 17070
 Phone: (717) 901-7055 Fax: (717) 901-7059
 www.centuryeng.com
 © 2011 ALL RIGHTS RESERVED

NO.	DATE	ISSUE

CONSTRUCTION DRAWINGS
 FOR
**SANITARY SEWER LATERAL REPLACEMENT
 GOODLING AND CYTEC BUILDINGS**

HARRISBURG AREA COMMUNITY COLLEGE - YORK CAMPUS
 CITY OF YORK
 YORK COUNTY, PENNSYLVANIA

SHEET TITLE

UTILITIES PLAN

ISSUE DATE	08/19/14
DRAWN	DESIGNED
NHN	TJP
CHECKED	TJP

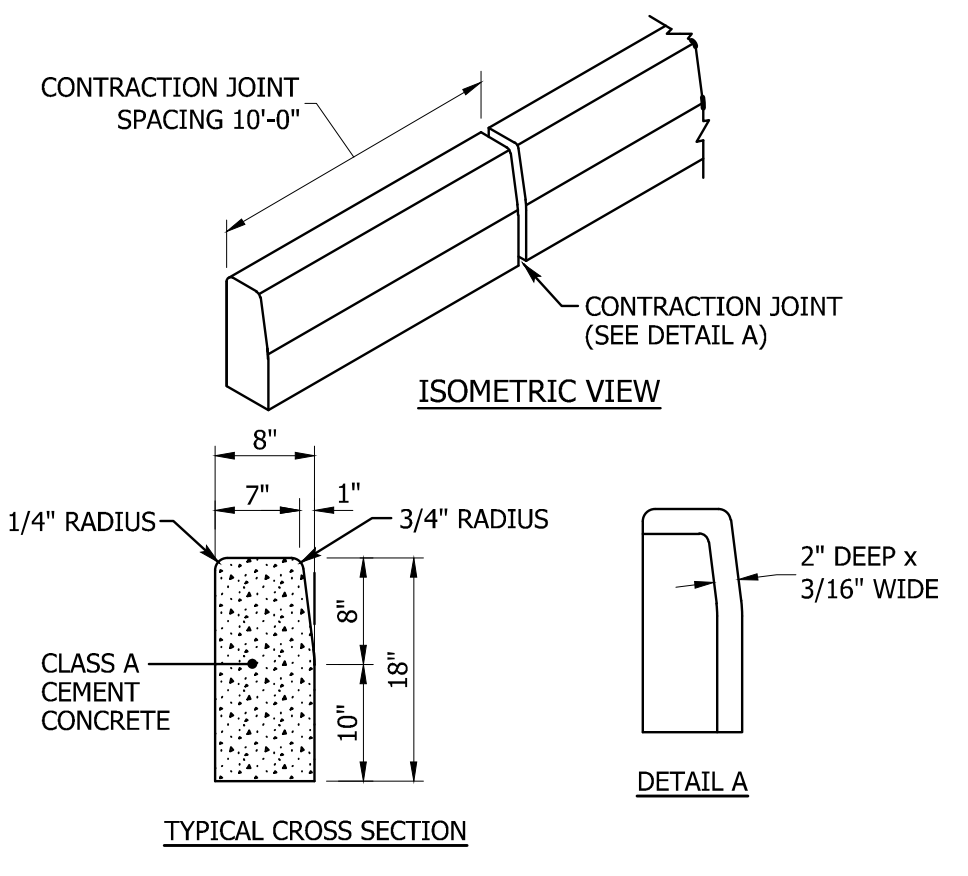
SCALE SHEET NO.
 1"=20'

PROJECT NO. **C-121**
 143026.00

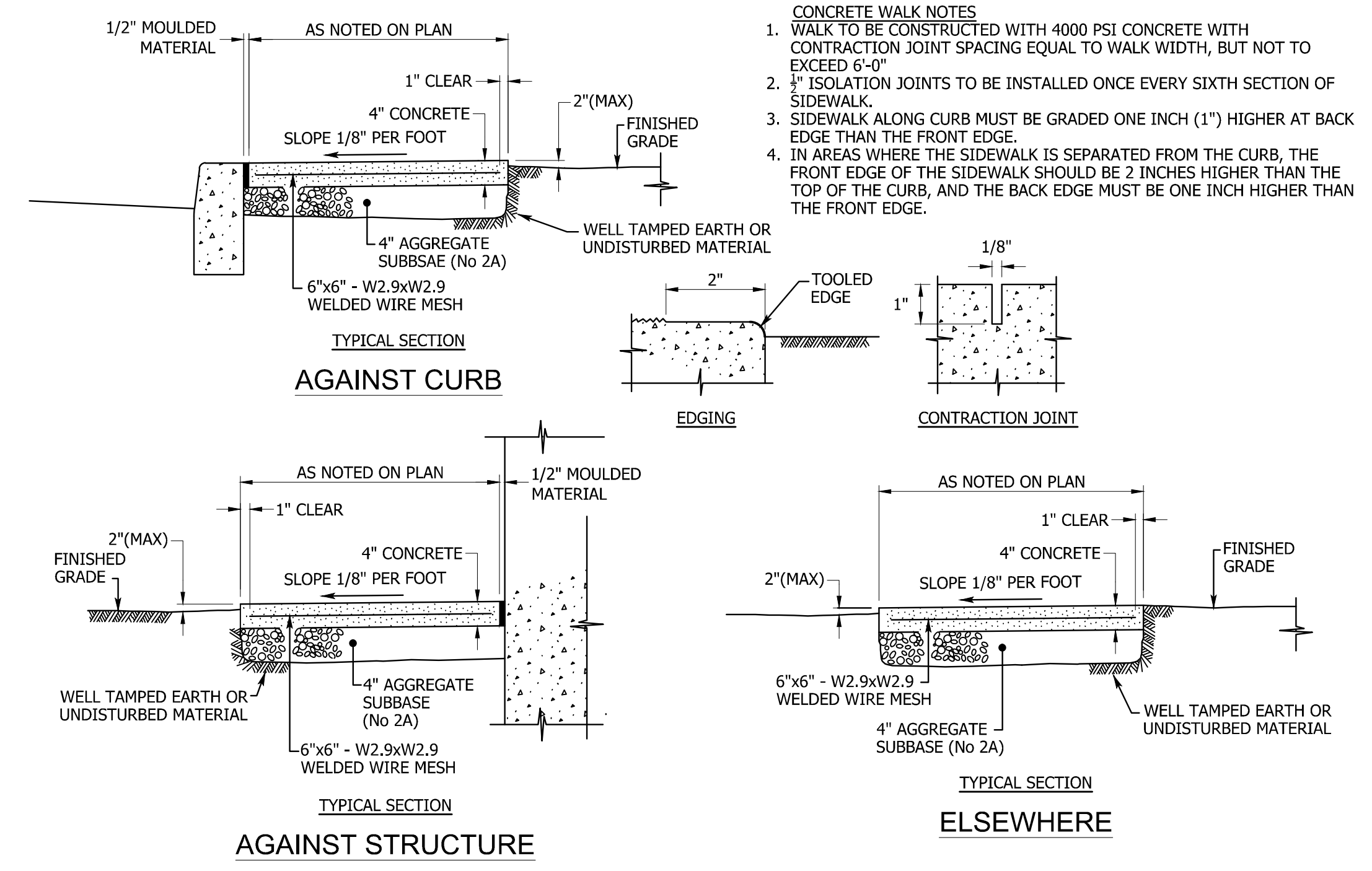
This drawing is the property of Century Engineering and is prepared for the exclusive use of its clients at the location indicated. No other use is authorized or intended.

mmCENTURY
ENGINEERING
 CONSULTING ENGINEERS - PLANNERS
 200 Airport Road, Capital City Airport
 New Cumberland, PA 17070
 Phone: (717) 901-7055 Fax: (717) 901-7059
 www.centuryeng.com
 © 2011 ALL RIGHTS RESERVED

- CONCRETE CURB NOTES**
1. PROVIDE MATERIALS AND CONSTRUCTION METHODS MEETING THE REQUIREMENTS OF PADOT PUBLICATION 408, SECTION 630 FOR PLAIN CEMENT CURB AND DEPRESSED CURB, SECTION 640 FOR PLAIN CEMENT CURB AND PLAIN CONCRETE CURB GUTTER.
 2. PLACE 3/4" PREMOLDED EXPANSION JOINT FILLER MATERIAL AT STRUCTURES AND AT END OF A WORK DAY. CUT MATERIAL TO CONFORM TO AREA ADJACENT TO CURB OR TO CONFORM TO CROSS SECTIONAL AREA OF CURB.



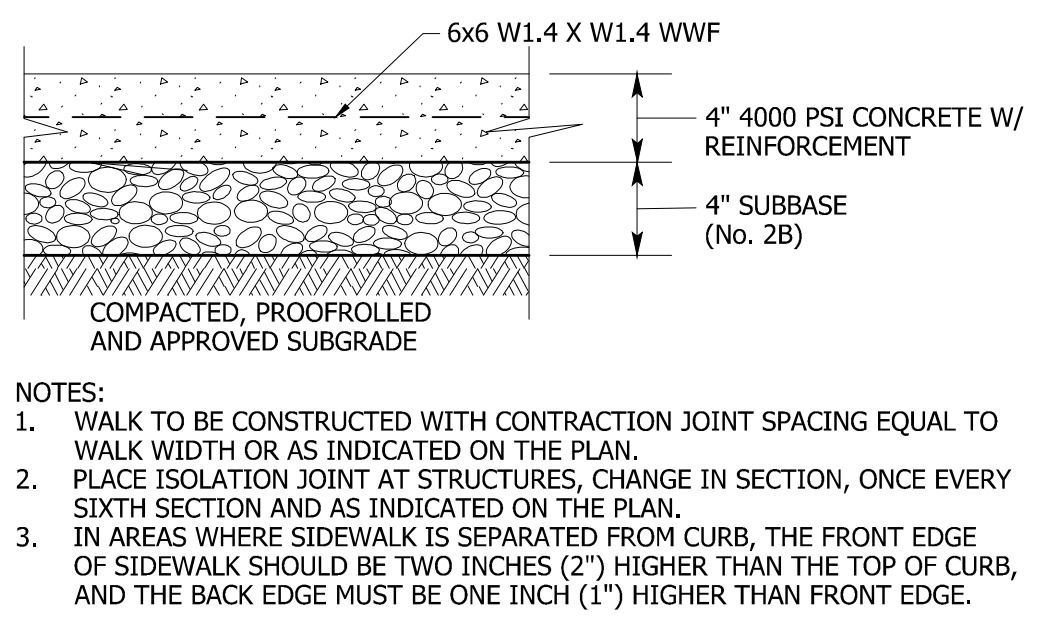
1 PLAIN CEMENT CONCRETE CURB
 C-503



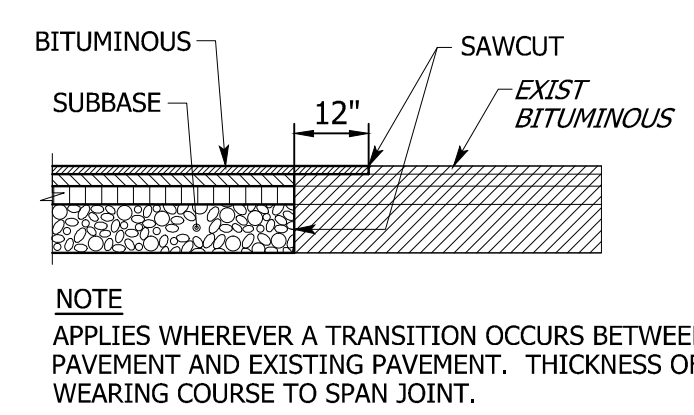
- CONCRETE WALK NOTES**
1. WALK TO BE CONSTRUCTED WITH 4000 PSI CONCRETE WITH CONTRACTION JOINT SPACING EQUAL TO WALK WIDTH, BUT NOT TO EXCEED 6'-0"
 2. 1/2" ISOLATION JOINTS TO BE INSTALLED ONCE EVERY SIXTH SECTION OF SIDEWALK.
 3. SIDEWALK ALONG CURB MUST BE GRADED ONE INCH (1") HIGHER AT BACK EDGE THAN THE FRONT EDGE.
 4. IN AREAS WHERE THE SIDEWALK IS SEPARATED FROM THE CURB, THE FRONT EDGE OF THE SIDEWALK SHOULD BE 2 INCHES HIGHER THAN THE TOP OF THE CURB, AND THE BACK EDGE MUST BE ONE INCH HIGHER THAN THE FRONT EDGE.

2 CONCRETE WALK
 C-503

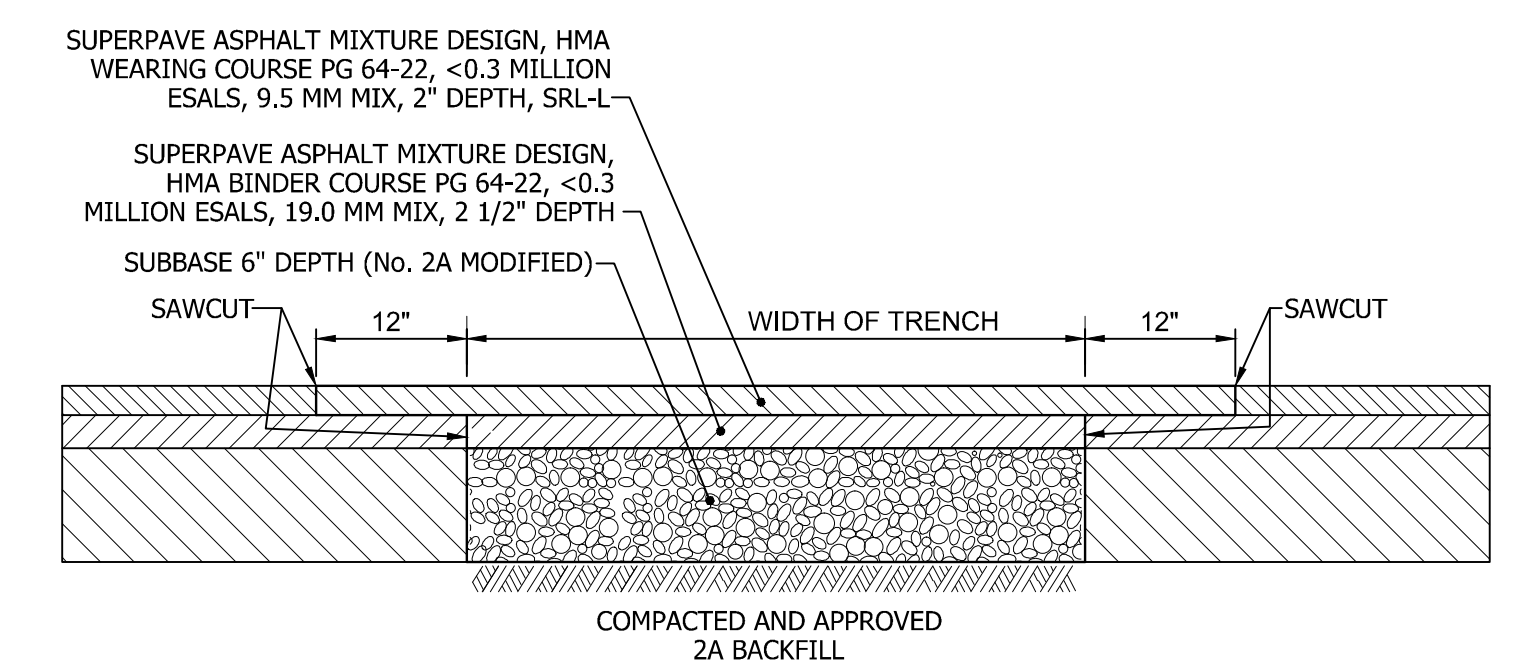
3 CONCRETE PAVEMENT LOADING DOCK
 C-503



4 CONCRETE WALKWAY SECTION
 C-503



5 PAVING NOTCH
 C-503



6 FULL DEPTH BITUMINOUS PAVING SECTION
 C-503

- NOTES:**
1. ADD PAVEMENT MARKINGS TO MATCH EXISTING WHERE NEEDED TO COMPLETE INTENDED PATTERN AND PURPOSE.
 2. BITUMINOUS PAVEMENT SHALL MEET MATERIAL PLACEMENT AND COMPACTION REQUIREMENTS AS SPECIFIED IN PADOT 408.

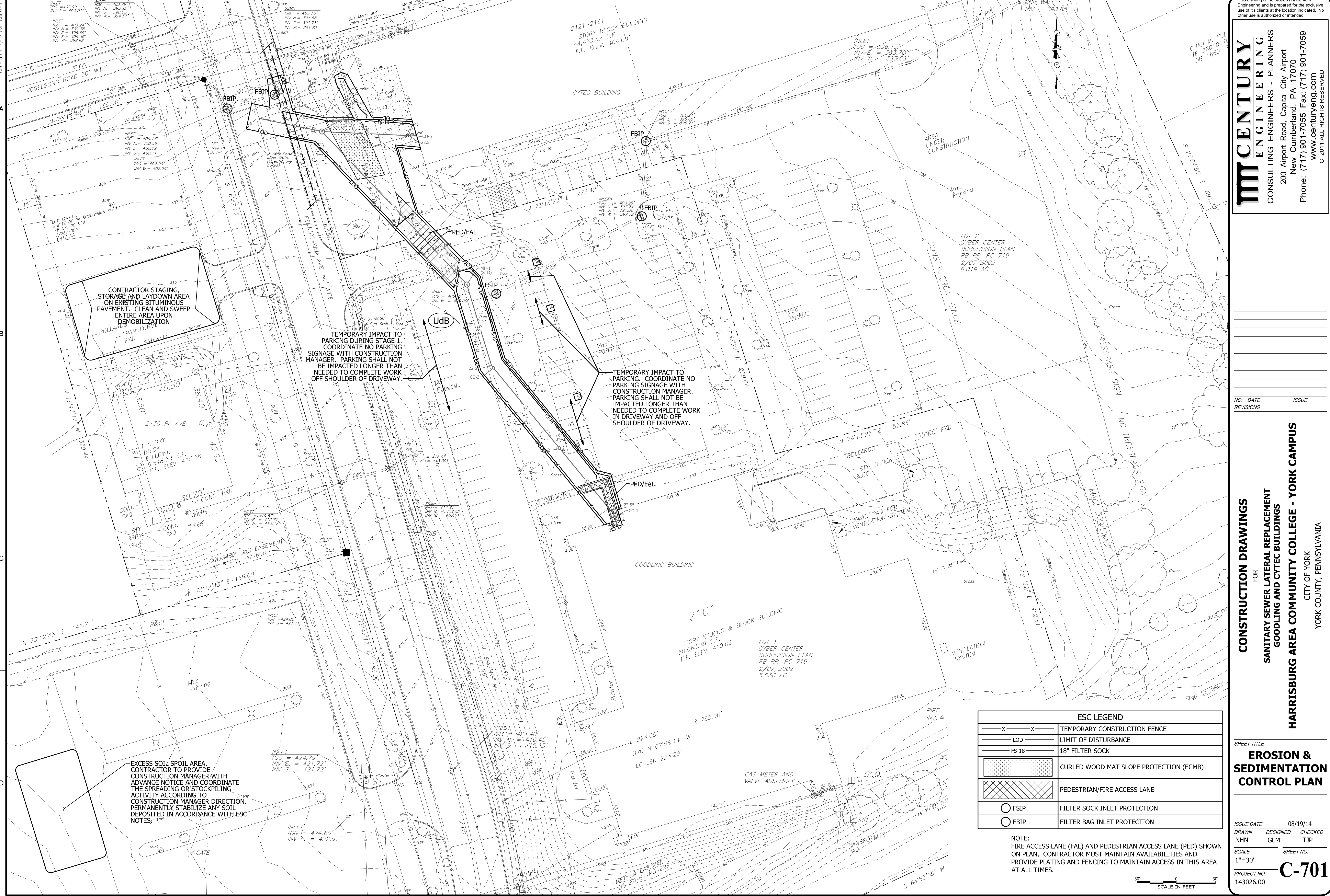
NO.	DATE	ISSUE

CONSTRUCTION DRAWINGS
 FOR
**SANITARY SEWER LATERAL REPLACEMENT
 GOODLING AND CYTEC BUILDINGS**
HARRISBURG AREA COMMUNITY COLLEGE - YORK CAMPUS
 CITY OF YORK
 YORK COUNTY, PENNSYLVANIA

CONSTRUCTION DETAILS

SHEET TITLE

ISSUE DATE	08/19/14
DRAWN	NHN
DESIGNED	TJP
CHECKED	TJP
SCALE	N/A
SHEET NO.	C-503
PROJECT NO.	143026.00



CONTRACTOR STAGING, STORAGE AND LAYDOWN AREA ON EXISTING BITUMINOUS PAVEMENT. CLEAN AND SWEEP ENTIRE AREA UPON DEMOBILIZATION

TEMPORARY IMPACT TO PARKING DURING STAGE 1. COORDINATE NO PARKING SIGNAGE WITH CONSTRUCTION MANAGER. PARKING SHALL NOT BE IMPACTED LONGER THAN NEEDED TO COMPLETE WORK OFF SHOULDER OF DRIVEWAY.

TEMPORARY IMPACT TO PARKING. COORDINATE NO PARKING SIGNAGE WITH CONSTRUCTION MANAGER. PARKING SHALL NOT BE IMPACTED LONGER THAN NEEDED TO COMPLETE WORK IN DRIVEWAY AND OFF SHOULDER OF DRIVEWAY.

EXCESS SOIL SPOIL AREA. CONTRACTOR TO PROVIDE CONSTRUCTION MANAGER WITH ADVANCE NOTICE AND COORDINATE THE SPREADING OR STOCKPILING ACTIVITY ACCORDING TO CONSTRUCTION MANAGER DIRECTION. PERMANENTLY STABILIZE ANY SOIL DEPOSITED IN ACCORDANCE WITH ESC NOTES.

ESC LEGEND	
— x — x —	TEMPORARY CONSTRUCTION FENCE
— LOD —	LIMIT OF DISTURBANCE
— FS-18 —	18" FILTER SOCK
[Stippled Pattern]	CURLED WOOD MAT SLOPE PROTECTION (ECMB)
[Cross-hatched Pattern]	PEDESTRIAN/FIRE ACCESS LANE
○ FSIP	FILTER SOCK INLET PROTECTION
○ FBIP	FILTER BAG INLET PROTECTION

NOTE: FIRE ACCESS LANE (FAL) AND PEDESTRIAN ACCESS LANE (PED) SHOWN ON PLAN. CONTRACTOR MUST MAINTAIN AVAILABILITIES AND PROVIDE PLATING AND FENCING TO MAINTAIN ACCESS IN THIS AREA AT ALL TIMES.

mm CENTURY
ENGINEERING
 CONSULTING ENGINEERS - PLANNERS
 200 Airport Road, Capital City Airport
 New Cumberland, PA 17070
 Phone: (717) 901-7055 Fax: (717) 901-7059
 www.centuryeng.com
 C 2011 ALL RIGHTS RESERVED

NO.	DATE	ISSUE

CONSTRUCTION DRAWINGS
 FOR
**SANITARY SEWER LATERAL REPLACEMENT
 GOODLING AND CYTEC BUILDINGS**
HARRISBURG AREA COMMUNITY COLLEGE - YORK CAMPUS
 CITY OF YORK
 YORK COUNTY, PENNSYLVANIA

SHEET TITLE
EROSION & SEDIMENTATION CONTROL PLAN

ISSUE DATE	08/19/14
DRAWN	DESIGNED
GLM	TJP
CHECKED	
SCALE	SHEET NO.
1"=30'	
PROJECT NO.	C-701
143026.00	

BEST MANAGEMENT PRACTICES (BMPS)

TEMPORARY BMPS

- PUMPED WATER FILTER BAGS**
 LOCATION: AS NEEDED.
 INSPECTION: INSPECT FILTER BAGS DAILY.
 MAINTENANCE: A SUITABLE MEANS OF ACCESSING THE BAG WITH MACHINERY REQUIRED FOR DISPOSAL PURPOSES MUST BE PROVIDED. FILTER BAGS SHALL BE REPLACED WHEN THEY BECOME HALF FULL. SPARE BAGS SHALL BE KEPT AVAILABLE FOR REPLACEMENT OF THOSE THAT HAVE FAILED OR ARE FILLED.
- TEMPORARY SEEDING**
 LOCATION: ALL DISTURBED LANDSCAPED AREA.
 INSPECTION: INSPECT TEMPORARY SEEDED AREAS WEEKLY AND AFTER EACH RUNOFF EVENT.
 MAINTENANCE: IMMEDIATELY RESEED AREAS WHICH HAVE NOT ESTABLISHED VEGETATION WITHIN AN ACCEPTABLE PERIOD IN WHICH ONE WOULD EXPECT GERMINATION (TYPICALLY 2-3 WEEKS) OR AS DIRECTED BY THE ENGINEER.
- FILTER SOCK PERIMETER CONTROL**
 LOCATION: THROUGHOUT THE SITE AS SHOWN ON THE PLANS.
 INSPECTION: INSPECT FILTER SOCK WEEKLY AND AFTER EACH RUNOFF EVENT.
 MAINTENANCE: ANY NECESSARY REPAIRS MUST BE MADE IMMEDIATELY. ACCUMULATED SEDIMENTS WILL BE REMOVED AS REQUIRED TO KEEP THE FACILITY FUNCTIONAL. IN ALL CASES, REMOVE DEPOSITS WHERE ACCUMULATIONS REACH ONE-THIRD (1/3) THE ABOVE GROUND HEIGHT OF THE FENCE. ANY SECTION WHICH HAS BEEN UNDERMINED OR OVERTOPPED MUST BE IMMEDIATELY REPLACED WITH A ROCK FILTER OUTLET. ADHERE TO ANY MANUFACTURER'S RECOMMENDATIONS FOR REPLACING FILTER SOCK DUE TO WEATHERING OR DAMAGE.
- FILTER SOCK INLET PROTECTION**
 LOCATION: ON ALL EXISTING AND PROPOSED INLETS THROUGHOUT WORK AREA AND DOWNSTREAM AREAS.
 INSPECTION: INSPECT FILTER SOCK WEEKLY AND AFTER EACH RUNOFF EVENT.
 MAINTENANCE: REMOVE SEDIMENTS COLLECTED AT THE BASE OF THE FILTER SOCK WHEN THEY REACH ONE-THIRD (1/3) OF THE EXPOSED HEIGHT OF THE FILTER SOCK. LIFT THE FILTER SOCKS AND CLEAN UNDER THEM DURING SEDIMENT REMOVAL.
- FILTER BAG INLET PROTECTION**
 LOCATION: ON ALL EXISTING AND PROPOSED INLETS THROUGHOUT WORK AREA AND DOWNSTREAM AREAS.
 INSPECTION: INSPECT FILTER BAG WEEKLY AND AFTER EACH RUNOFF EVENT.
 MAINTENANCE: REMOVE SEDIMENTS COLLECTED AT THE BASE OF THE FILTER BAG WHEN THEY REACH ONE-THIRD (1/3) OF THE EXPOSED HEIGHT OF THE FILTER BAG.
- EROSION CONTROL MAT AND BLANKETS**
 LOCATION: ON ANY SLOPES GREATER THAN 3:1.
 INSPECTION: INSPECT WEEKLY AND AFTER EACH RUNOFF EVENT.
 MAINTENANCE: REPAIR OR REPLACE ANY UNDERMINED MAT OR BLANKET. REMOVE ANY TRASH AND DEBRIS THAT MAY ACCUMULATE.

PERMANENT BMPS

- PERMANENT SEEDING AND MULCH**
 LOCATION: ON ALL LANDSCAPED AREAS.
 INSPECTION: INSPECT SEEDED AREAS REGULARLY.
 MAINTENANCE: IMMEDIATELY RESEED AREAS WHICH HAVE NOT ESTABLISHED VEGETATION WITHIN AN ACCEPTABLE PERIOD IN WHICH ONE WOULD EXPECT GERMINATION (TYPICALLY 2-3 WEEKS) OR AS DIRECTED BY THE ENGINEER. PROPERLY MAINTAIN SEEDED AREAS UNTIL THE PROJECT HAS BEEN ACCEPTED. THIS MAY INCLUDE REPEATED WATERING, MOWING, AND REPAIRS OR REPLACEMENT OF AREAS WHICH FAIL TO SHOW A UNIFORM GROWTH OF GRASS OR WHICH ARE DAMAGED IN ANY WAY.

RESOLUTIONS TO SOIL LIMITATIONS

SOIL UNSUITABLE FOR ROAD SUBGRADE
 RESOLUTION - IF THERE ARE NO SUITABLE ON-SITE SOILS FOR SUBGRADE, SUITABLE MATERIAL WILL NEED TO BE IMPORTED. SUITABLE MATERIAL SHOULD CONFORM TO PENNDOT PUBLICATION 408, SECTION 210.3(C).

SOIL UNSUITABLE FOR ROAD FILL
 RESOLUTION - IF THERE ARE NO SUITABLE ON-SITE SOILS FOR ROAD FILL, SUITABLE MATERIAL WILL NEED TO BE IMPORTED. SUITABLE MATERIAL SHOULD CONFORM TO PENNDOT PUBLICATION 408, SECTION 206.2(A)(2).

SOIL UNSUITABLE FOR WINTER GRADING
 RESOLUTION - GRADING OPERATIONS SHOULD NOT BE PERFORMED WHEN GROUND PENETRATING FROST IS PRESENT.

SOIL UNSUITABLE FOR TOPSOIL
 RESOLUTION - IF THERE ARE NO SUITABLE ON-SITE SOILS FOR TOPSOIL, SUITABLE MATERIAL WILL NEED TO BE IMPORTED. SUITABLE MATERIAL SHOULD CONFORM TO PENN DOT PUBLICATION 408, SECTION 802.2.

SHALLOW DEPTH TO BEDROCK
 RESOLUTION - DO NOT LOCATE FACILITIES AND STRUCTURES REQUIRING EXCAVATION IN AREAS OF THIS SOIL TYPE. IF NO OTHER SUITABLE LOCATIONS ARE AVAILABLE, EXCAVATE VIA ROCK HAMMER OR BLASTING, OR PLACE SUFFICIENT FILL FOR THE PROPOSED USE. SUITABLE FILL MATERIAL SHOULD CONFORM TO PENNDOT PUBLICATION 408.

WET SOILS
 RESOLUTION - ONLY USES COMPATIBLE WITH WET SOILS SHOULD BE LOCATED IN AREAS WITH THESE SOIL TYPES. IF NO OTHER SUITABLE LOCATIONS ARE AVAILABLE FOR USES INCOMPATIBLE WITH WET SOILS, STRUCTURES AND FACILITIES MUST BE DESIGNED TO ACCOMMODATE THE WET CONDITIONS AND SUBSURFACE WATER PRESSURE OR APPROPRIATE DRAINAGE MEASURES INSTALLED.

HIGH WATER TABLE
 RESOLUTION - ONLY USES COMPATIBLE WITH A HIGH WATER TABLE SHOULD BE LOCATED IN THESE AREAS. IF NO OTHER SUITABLE LOCATIONS ARE AVAILABLE FOR USES INCOMPATIBLE WITH A HIGH WATER TABLE, STRUCTURES OR FACILITIES IN THESE AREAS MUST BE DESIGNED TO WITHSTAND THE WETNESS AND SUBSURFACE WATER PRESSURE OR APPROPRIATE DRAINAGE MEASURES INSTALLED.

MULCHING

- APPLY MULCHES AT THE RATES SHOWN IN MULCH APPLICATION RATES TABLE.
- STRAW AND HAY MULCH SHOULD BE ANCHORED IMMEDIATELY AFTER APPLICATION TO PREVENT BEING WINDBLOWN. A TRACTOR-DRAWN IMPLEMENT MAY BE USED TO "CRIMP" THE STRAW OR HAY INTO THE SOIL. THIS METHOD IS LIMITED TO SLOPES NO STEEPER THAN 3:1. THE MACHINERY SHOULD BE OPERATED ON THE CONTOUR. (NOTE: CRIMPING OF HAY OR STRAW BY RUNNING OVER IT WITH TRACKED MACHINERY IS NOT RECOMMENDED.)
- SYNTHETIC BINDERS (CHEMICAL BINDERS) MAY BE USED AS RECOMMENDED BY THE MANUFACTURER TO ANCHOR MULCH PROVIDED SUFFICIENT DOCUMENTATION IS PROVIDED TO SHOW THEY ARE NON-TOXIC TO NATIVE PLANT AND ANIMAL SPECIES.
- LIGHTWEIGHT PLASTIC, FIBER, OR PAPER NETS MAY BE STAPLED OVER THE MULCH ACCORDING TO MANUFACTURER'S RECOMMENDATIONS.

MULCH APPLICATION RATES				
MULCH TYPE	APPLICATION RATE (MIN.)			NOTES
	PER ACRE	PER 1000 SQ. YD.	PER 1000 SQ. YD.	
STRAW	3 TONS	133 LB	1200 LB	EITHER WHEAT OR OAT STRAW, FREE OF WEEDS, NOT CHOPPED OR FINELY BROKEN
HAY	3 TONS	133 LB	1200 LB	TIMOTHY, MIXED CLOVER AND TIMOTHY OR OTHER NATIVE FORAGE GRASSES

MAINTENANCE PROGRAM

- UNTIL THE SITE IS STABILIZED, ALL EROSION AND SEDIMENTATION BMP'S MUST BE MAINTAINED PROPERLY. MAINTENANCE MUST INCLUDE INSPECTIONS OF ALL EROSION AND SEDIMENTATION BMP'S AFTER EACH RUNOFF EVENT AND ON A WEEKLY BASIS. ALL SITE INSPECTIONS WILL BE DOCUMENTED IN AN INSPECTION LOG KEPT FOR THIS PURPOSE. THE COMPLIANCE ACTIONS AND THE DATE, TIME AND NAME OF THE PERSON CONDUCTING THE INSPECTION. THE INSPECTION LOG WILL BE KEPT ON SITE AT ALL TIMES AND MADE AVAILABLE TO THE DISTRICT UPON REQUEST.
- ALL PREVENTIVE AND REMEDIAL MAINTENANCE WORK, INCLUDING CLEAN OUT, REPAIR, REPLACEMENT, REGRADING, RESEEDING, REMULCHING AND RENETTING, MUST BE PERFORMED IMMEDIATELY. IF EROSION AND SEDIMENTATION BMP'S FAIL TO PERFORM AS EXPECTED, REPLACEMENT BMP'S OR MODIFICATIONS OF THOSE INSTALLED WILL BE NEEDED.
- WHERE BMP'S ARE FOUND TO FAIL TO ALLEVIATE EROSION OR SEDIMENT POLLUTION, CONTRACTOR SHALL INCLUDE THE FOLLOWING INFORMATION:
 - THE LOCATION AND SEVERITY OF THE BMP'S FAILURE AND ANY POLLUTION EVENTS.
 - ALL STEPS TAKEN TO REDUCE, ELIMINATE AND PREVENT THE RECURRENCE OF THE NON-COMPLIANCE.
 - THE TIME FRAME TO CORRECT THE NON-COMPLIANCE, INCLUDING THE EXACT DATES WHEN THE ACTIVITY WILL RETURN TO COMPLIANCE.
- AFTER FINAL SITE STABILIZATION HAS BEEN ACHIEVED, TEMPORARY EROSION AND SEDIMENT BMP'S MUST BE REMOVED. AREAS DISTURBED DURING REMOVAL OF THE BMP'S MUST BE STABILIZED IMMEDIATELY.
- SEDIMENT DEPOSITS MUST BE REMOVED WHEN THE LEVEL OF DEPOSITION REACHES THE ELEVATION DEPICTED IN THE DEVICE DETAILS. SEDIMENT DEPOSITS MUST ALSO BE REMOVED AFTER EACH RAINFALL REGARDLESS OF THE DEPOSITION ELEVATION. REMOVED DEPOSITS SHALL BE PLACED ON THE EXISTING EXPOSED SITE OUT OF THE WAY OF CONSTRUCTION AND ABOVE SEDIMENT DEVICES. IF A DEPOSIT IS TRANSPORTED BY TRUCK OVER LOCAL ROADS, IT SHALL BE DONE IN A MANNER WHICH KEEPS ROADS FREE OF SEDIMENT. ANY SEDIMENT DEPOSITS REMAINING IN PLACE AFTER THE DEVICES ARE NO LONGER REQUIRED MAY BE DRESSED TO CONFORM TO THE EXISTING GRADE, PREPARED, AND SEEDED.

PPC PLAN

IF THE OPERATOR WILL BE STORING, USING OR TRANSPORTING HAZARDOUS WASTES AND MATERIALS, FUELS, CHEMICALS, OR SOLVENTS ONTO, ON, OR FROM THE PROJECT SITE DURING CONSTRUCTION, A PPC PLAN MUST BE PREPARED BY THE OPERATOR AND AVAILABLE AT THE SITE AT ALL TIMES.

PERMANENT SEED MIXTURE				
	% OF MIXTURE (BY WEIGHT)	% PURITY	% GERMINATION	% WEED SEED
FORMULA B MIXTURE				
SPECIES:				
PERENNIAL RYE GRASS MIXTURE	20	98	90	0.15
CREEPING RED FESCUE OR CHEWING FESCUE	30	98	85	0.15
KENTUCKY BLUEGRASS MIXTURE	50	98	80	0.20
TEMPORARY SEED MIXTURE				
	% OF MIXTURE	% PURITY	% GERMINATION	% WEED SEED
FORMULA E MIXTURE				
SPECIES:				
ANNUAL RYEGRASS	100	98	90	0.15

USE EACH SEED MIXTURE IN THE AREAS DESIGNATED AS FOLLOWS OR AS DIRECTED	
FORMULA B MIXTURE	LAWNS (TURF AREAS UNLESS NOTED OTHERWISE)
FORMULA E MIXTURE	AS NECESSARY

FORMULA B SEED MIX	100 LB/AC (21.0 LB/1000 SY)
AGRICULTURAL LIMESTONE	2 TON/AC (800 LB/1000 SY)
FERTILIZER (10-20-20)	700 LB/AC (140 LB/1000 SY)
SLOW-RELEASE NITROGEN FERTILIZER (38-0-0)	242 LB/AC (50 LB/1000 SY)
STRAW MULCH	3 TON/AC
FORMULA E SEED MIX	50 LB/AC (10 LB/1000 SY)
STRAW MULCH	3 TON/AC

This drawing is the property of Century Engineering and is prepared for the exclusive use of its clients at the location indicated. No other use is authorized or intended.

mmCENTURY ENGINEERING
 CONSULTING ENGINEERS - PLANNERS
 200 Airport Road, Capital City Airport
 New Cumberland, PA 17070
 Phone: (717) 901-7055 Fax: (717) 901-7059
 www.centuryeng.com
 C. 2011 ALL RIGHTS RESERVED

NO.	DATE	ISSUE
REVISIONS		

CONSTRUCTION DRAWINGS
 FOR
**SANITARY SEWER LATERAL REPLACEMENT
 GOODLING AND CYTEC BUILDINGS**
HARRISBURG AREA COMMUNITY COLLEGE - YORK CAMPUS
 CITY OF YORK
 YORK COUNTY, PENNSYLVANIA

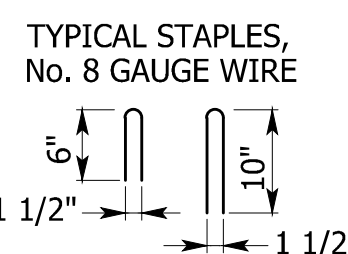
SHEET TITLE
**EROSION &
 SEDIMENTATION
 CONTROL NOTES**

ISSUE DATE	08/19/14
DRAWN	DESIGNED
NHN	GLM
CHECKED	TJP
SCALE	SHEET NO.
N/A	
PROJECT NO.	C-703
143026.00	

Generated by: Steve Charron

BURY THE UP-CHANNEL END OF THE BLANKET IN A TRENCH 6 INCHES OR MORE IN DEPTH, THEN TAMP TRENCH FULL OF SOIL. SECURE WITH ROW OF STAPLES, 6 INCH SPACING, 4 INCHES DOWN FROM TRENCH.

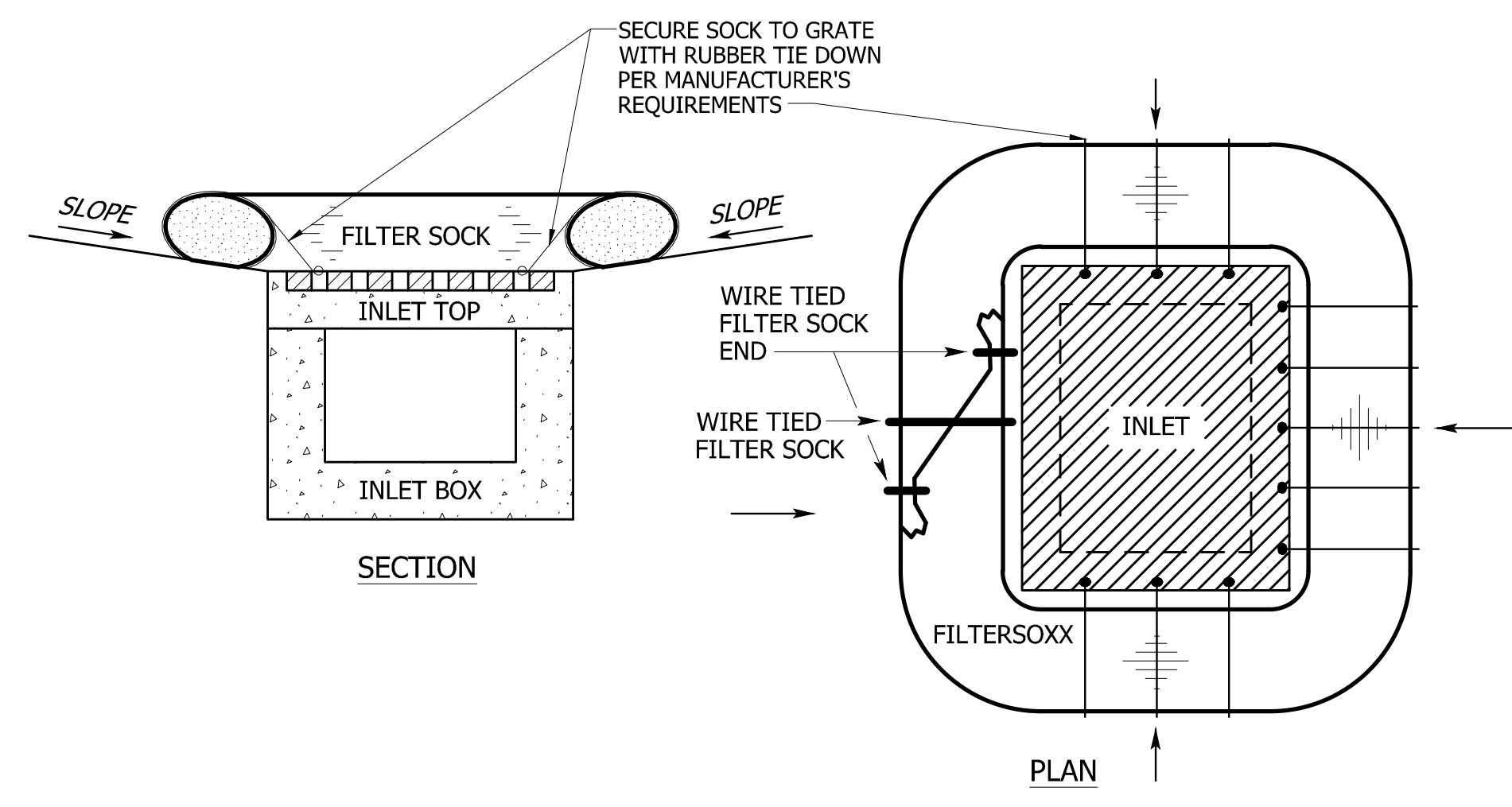
THE EDGES OF PARALLEL BLANKETS MUST BE STAPLED WITH APPROXIMATELY 2" OVERLAP



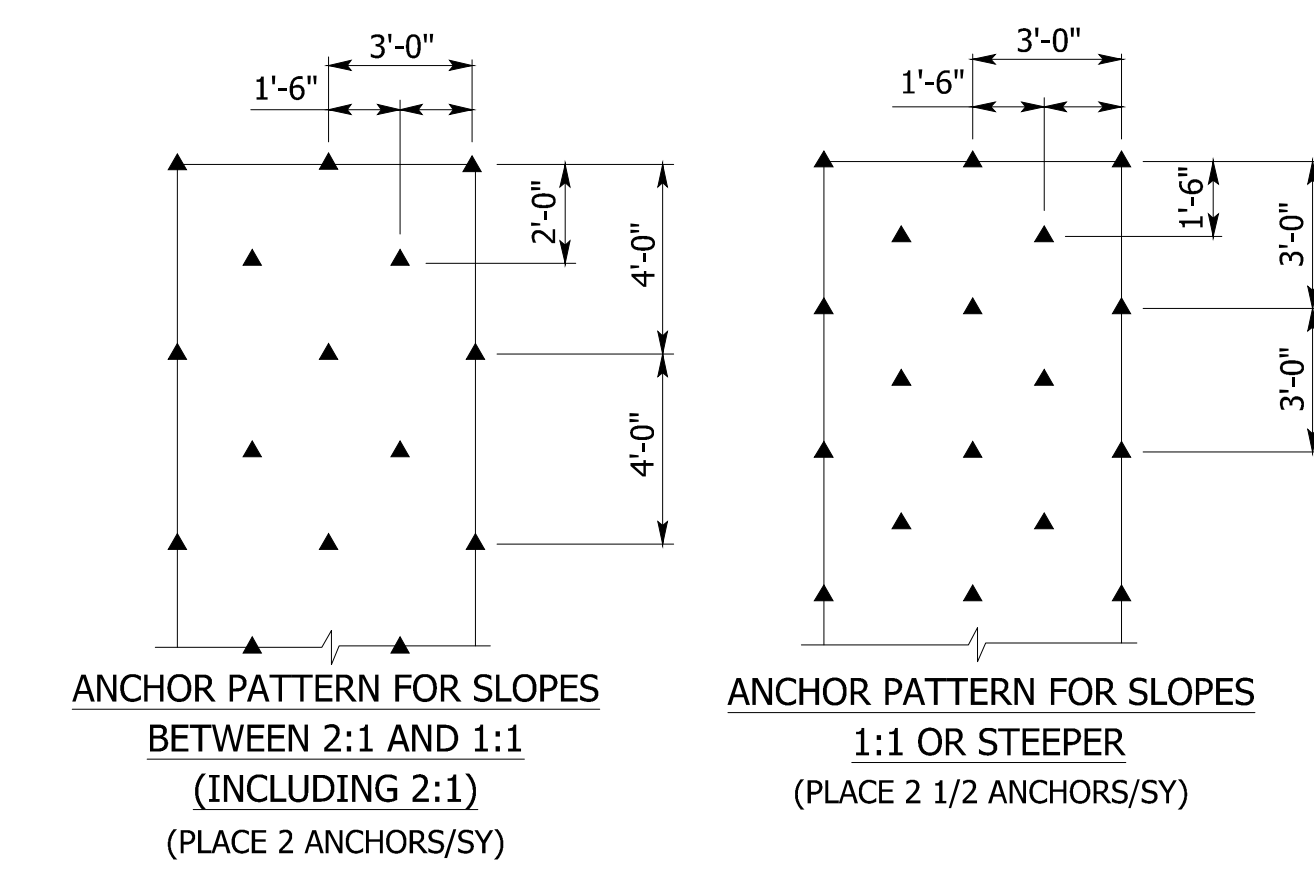
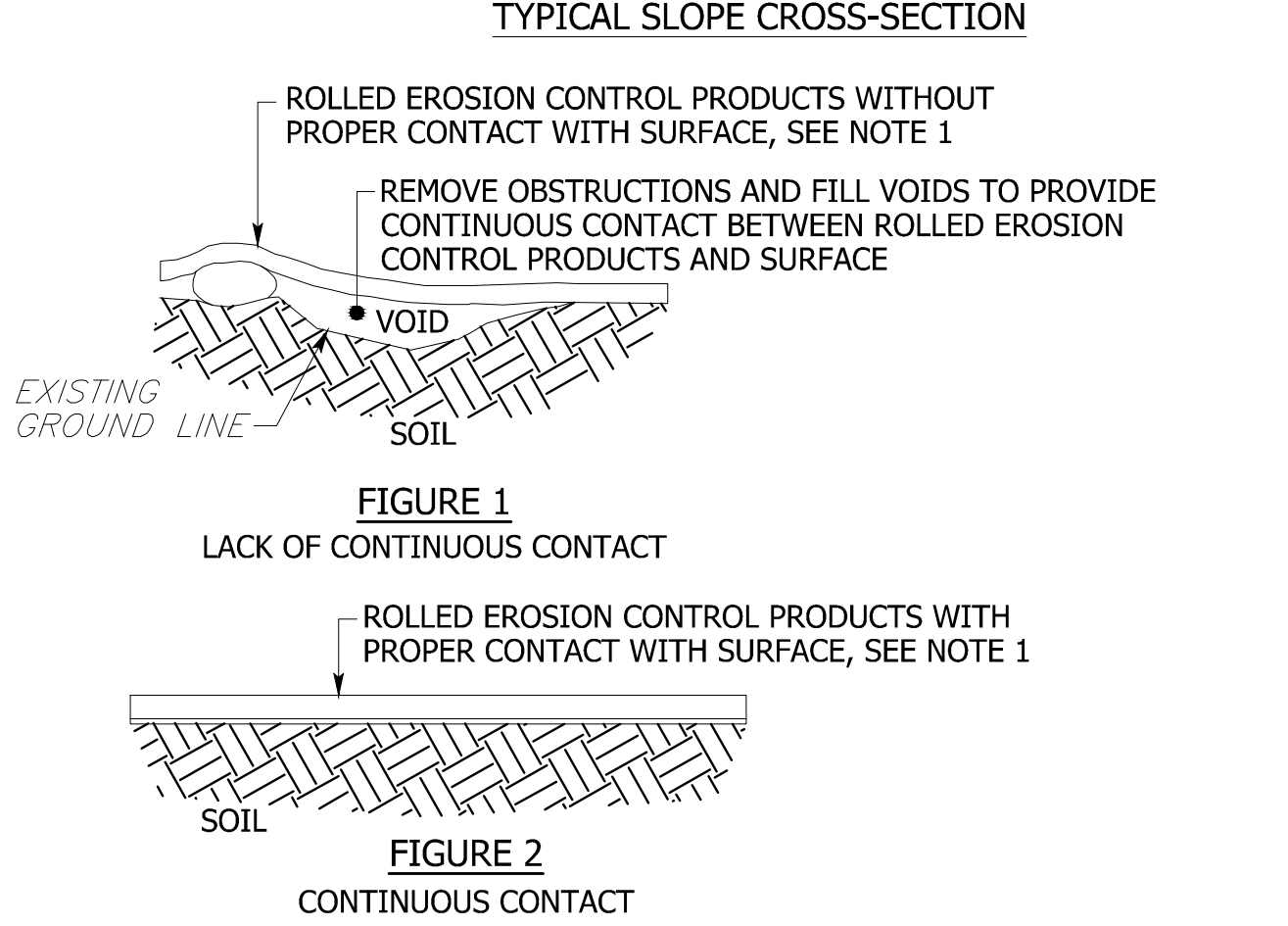
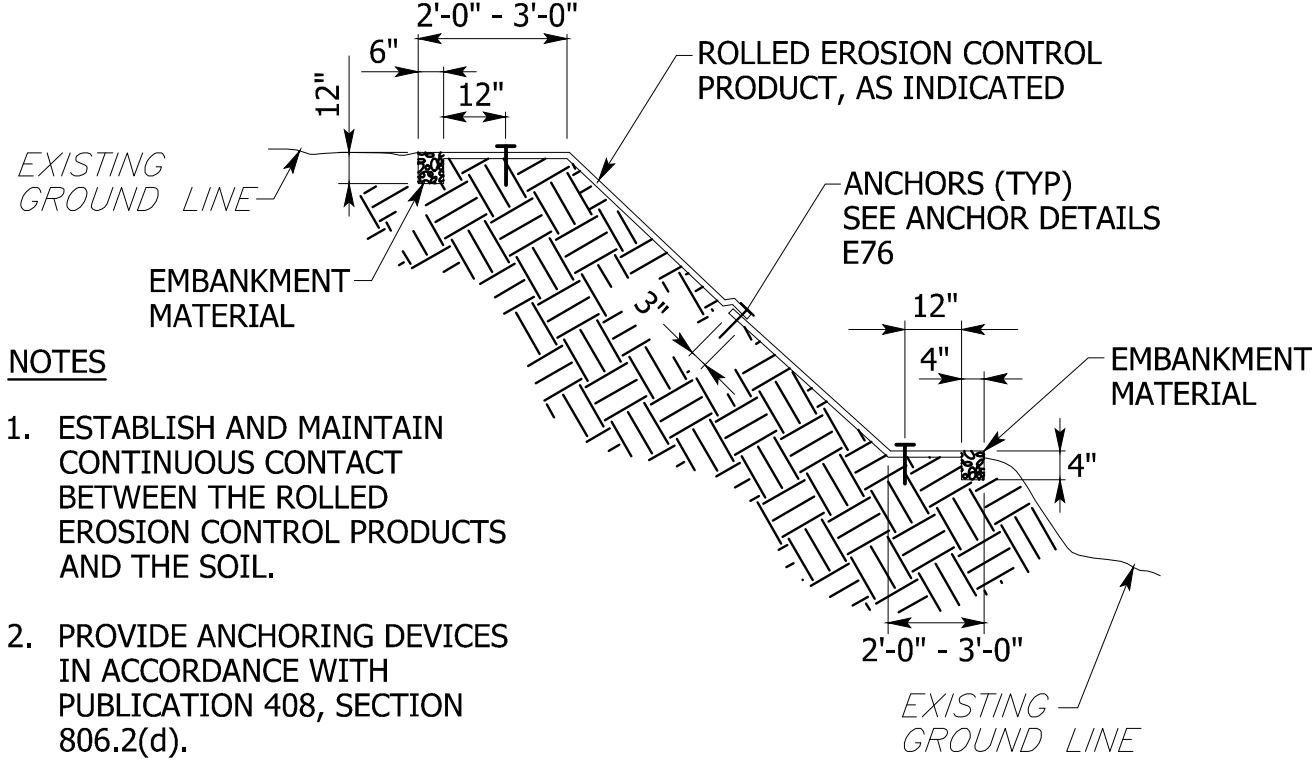
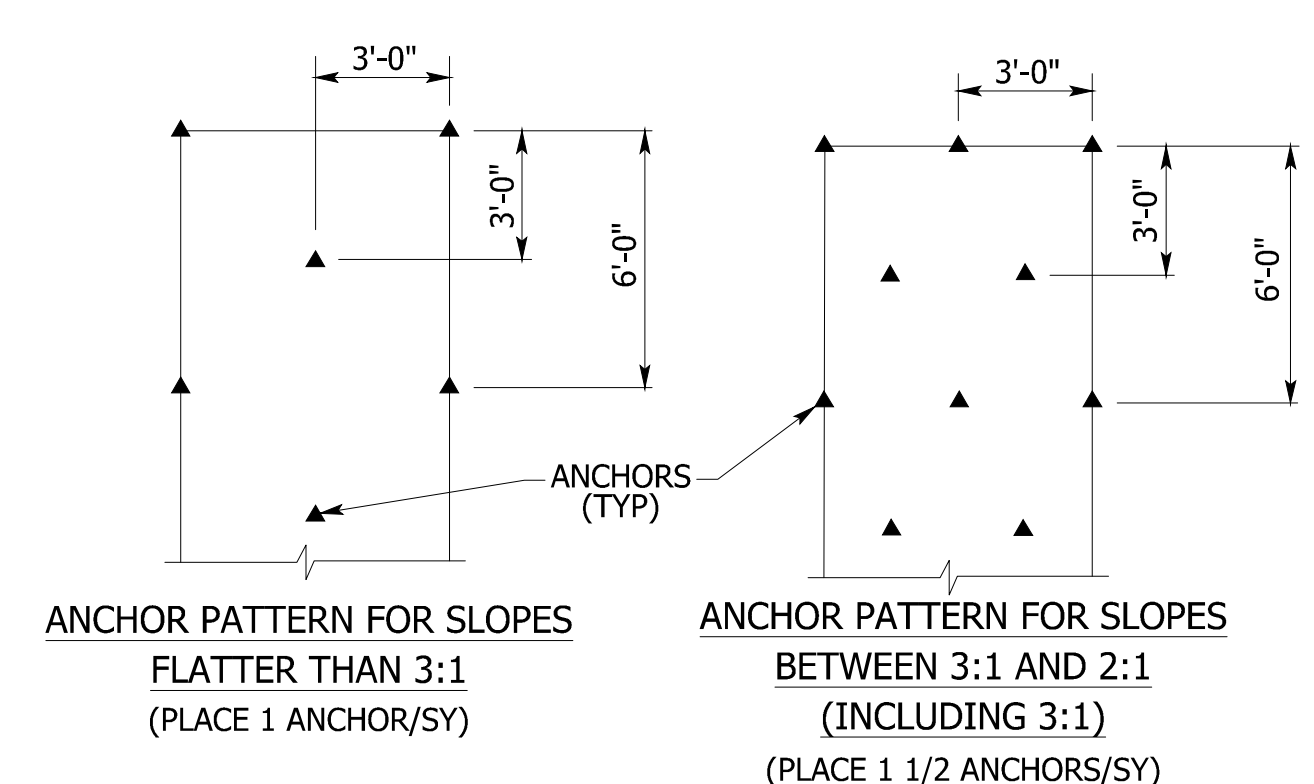
WHEN BLANKETS MUST BE SPLICED DOWN THE SLOPE, PLACE BLANKETS END OVER END (SHINGLE STYLE) WITH APPROXIMATELY 6" OVERLAP. STAPLE THROUGH OVERLAPPED AREA APPROXIMATELY 12" APART.

ISOMETRIC VIEW

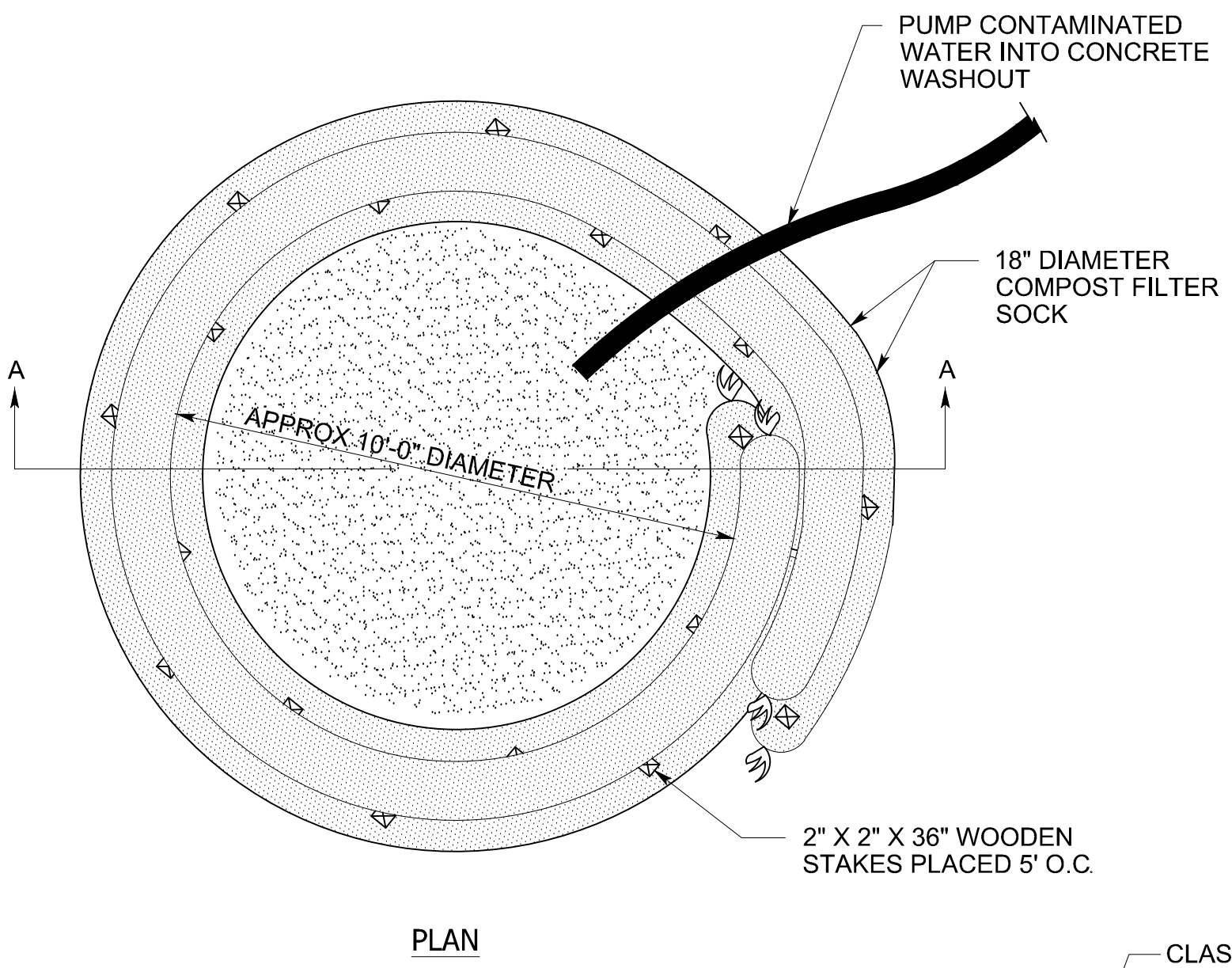
EROSION CONTROL MAT SLOPE APPLICATION
NTS



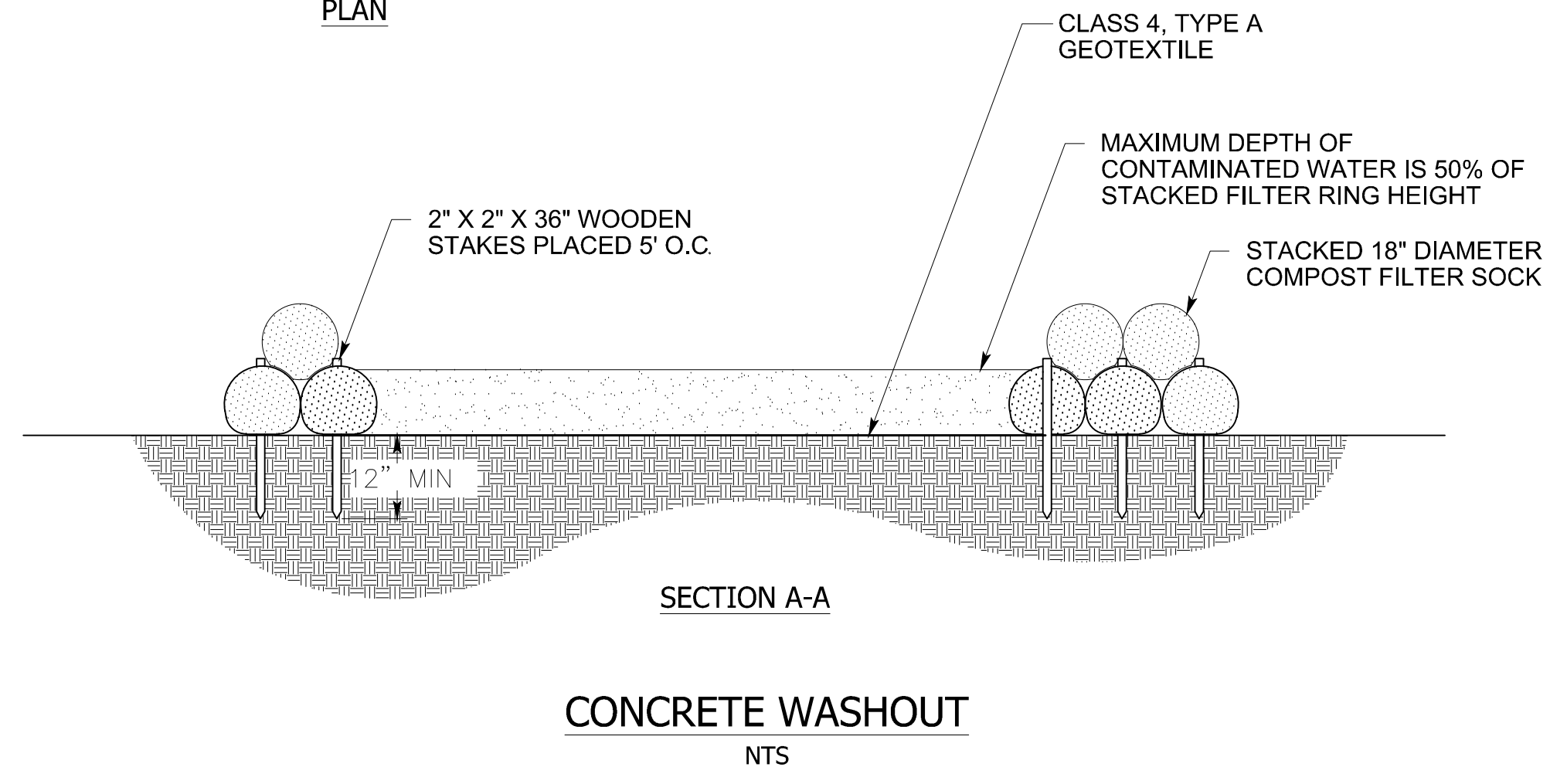
FILTER SOCK FOR TYPE M INLET TOP
NTS



SLOPE PROTECTION - ANCHOR PATTERNS
NTS



- CONCRETE WASHOUT NOTES**
1. INSTALL ON FLAT GRADE FOR OPTIMUM PERFORMANCE.
 2. FILTER SOCK MAY BE DIRECT SEEDED AT THE TIME OF INSTALLATION.
 3. LOCATION TO BE DETERMINED BY REPRESENTATIVE.
 4. MAKE SURE PROPER SIGNAGE IS PROVIDED SO DRIVERS ARE AWARE OF THE PRESENCE OF THE WASHOUT FACILITY.
 5. PLACE ON SLOPES NOT EXCEEDING 2% GRADE WHEREVER POSSIBLE.
 6. MAINTENANCE - ALL CONCRETE WASHOUT FACILITIES SHOULD BE INSPECTED DAILY. DAMAGED OR LEAKING WASHOUTS SHOULD BE DEACTIVATED AND REPAIRED OR REPLACED IMMEDIATELY.
 7. ACCUMULATED MATERIAL SHOULD BE REMOVED WHEN THEY REACH 75% CAPACITY.
 8. PLASTIC LINERS SHALL BE REPLACED WITH EACH CLEANING OF THE WASHOUT FACILITY.



This drawing is the property of Century Engineering and is prepared for the exclusive use of its clients at the location indicated. No other use is authorized or intended.

MM CENTURY ENGINEERING
CONSULTING ENGINEERS - PLANNERS
200 Airport Road, Capital City Airport
New Cumberland, PA 17070
Phone: (717) 901-7055 Fax: (717) 901-7059
www.centuryeng.com
C. 2011 ALL RIGHTS RESERVED

NO.	DATE	ISSUE

CONSTRUCTION DRAWINGS
FOR
SANITARY SEWER LATERAL REPLACEMENT GOODLING AND CYTEC BUILDINGS
HARRISBURG AREA COMMUNITY COLLEGE - YORK CAMPUS
CITY OF YORK
YORK COUNTY, PENNSYLVANIA

SHEET TITLE

EROSION & SEDIMENTATION CONTROL DETAILS

ISSUE DATE	08/19/14
DRAWN	DESIGNED
NHN	GLM
CHECKED	TJP
SCALE	SHEET NO.
N/A	
PROJECT NO.	C-705
143026.00	