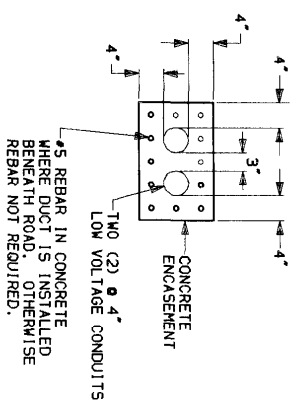
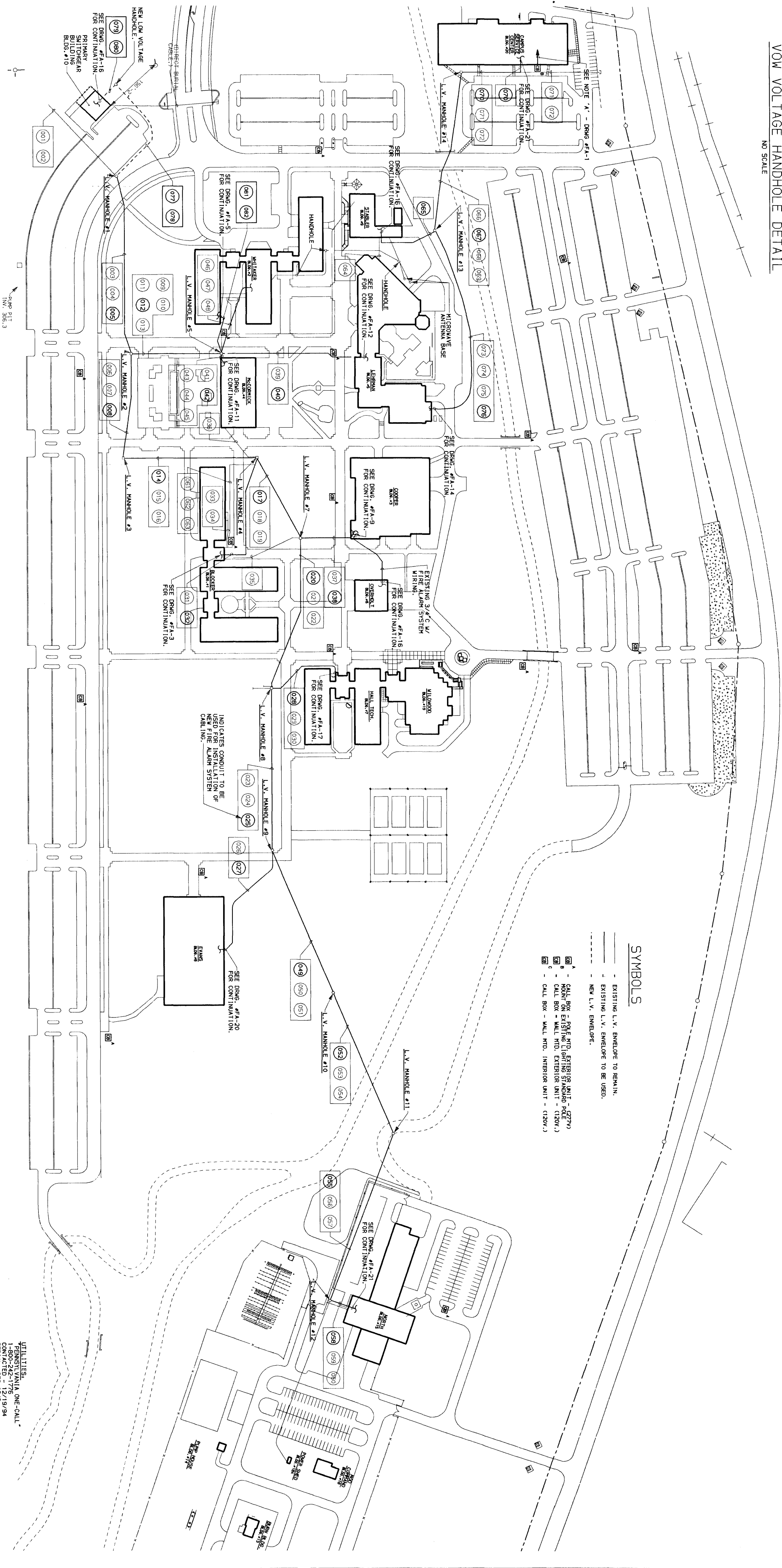


VOM VOLTAGE HANDHOLE DETAIL
NO SCALE



LOW VOLTAGE DUCT - DETAIL
NO SCALE



SITE PLAN
SCALE: 1" = 100'

- SYMBOLS**
- EXISTING L.V. ENVELOPE TO REMAIN.
 - - - NEW L.V. ENVELOPE.
 - CALL BOX FOR FIRE AND ALARM SYSTEM (120V)
 - CALL BOX - WALL MTD. EXTERIOR UNIT - (120V)
 - CALL BOX - WALL MTD. INTERIOR UNIT - (120V)

REVISIONS	DATE	DESCRIPTION
2/15/98 AS BUILT DRWG.		

THE CONTRACTOR SHALL VERIFY ALL DIMENSIONS AND LOCATIONS AT THE SITE BEFORE PROCEEDING WITH HIS WORK.	
---	--

UPGRADE OF CAMPUS INFRASTRUCTURE PHASE III - SUB-PROJECT NO. 8 HARRISBURG AREA COMMUNITY COLLEGE HARRISBURG, PENNSYLVANIA	
PARTIAL SITE PLAN - EXISTING & NEW CAMPUS LOW VOLTAGE DISTRIBUTION REHABILITATION	

UTILITIES, PENNSYLVANIA ONE-CALL CONTACTED 12/19/94 SERIAL #353-0343	
--	--

Gatter and Diehl, Inc. Consulting Engineers	2400 Park Drive #110 Harrisburg, PA 17105-9700 (717) 655-9700
---	---

DATE: JUNE 28, 1996	DESIGNED BY: M.K.
CHECKED BY: J.S.	PROJECT NO: 94050.01
SCALE: 1" = 100'	

