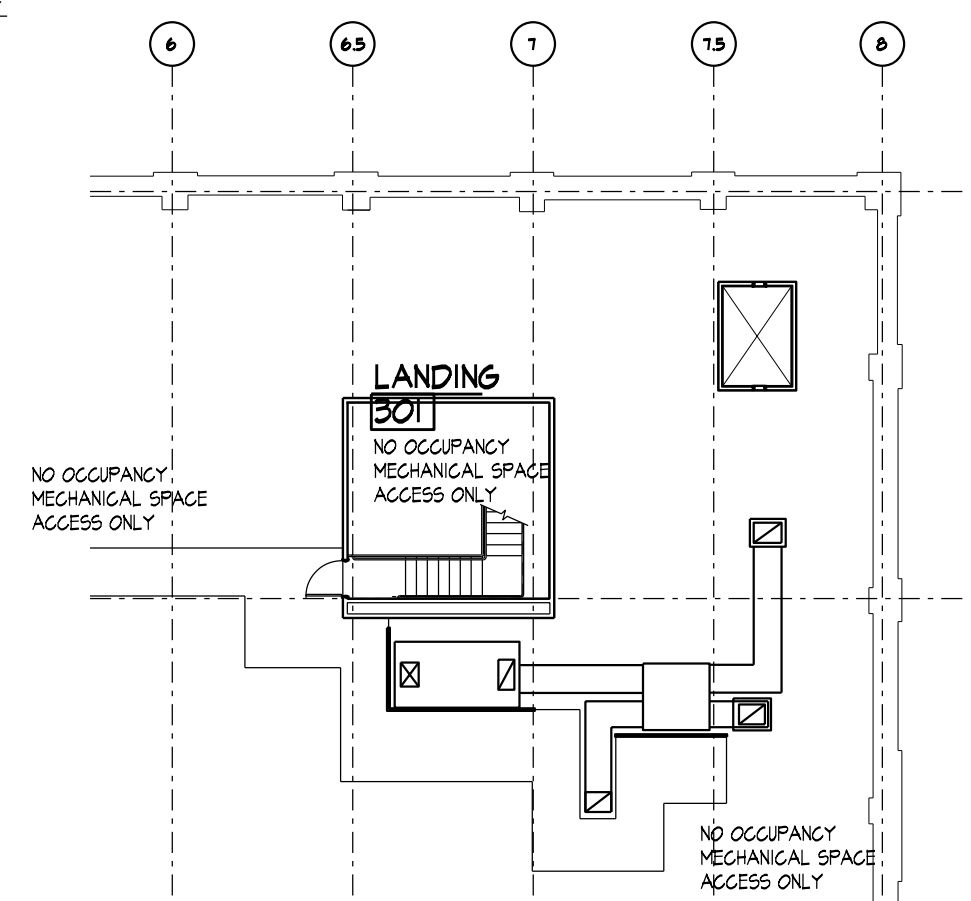
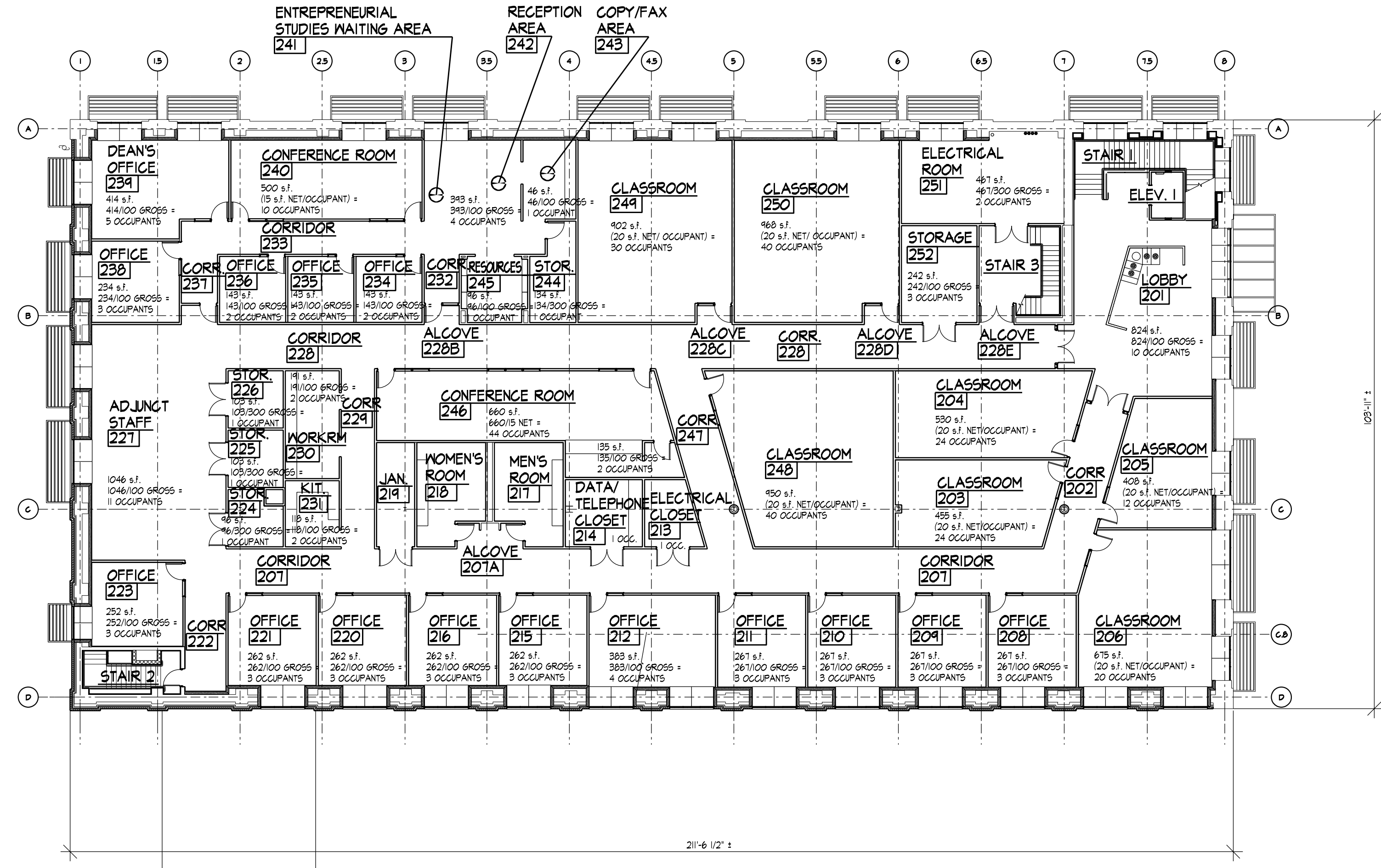


**FIRST FLOOR PLAN**  
SCALE: NOT TO SCALE  
FIRST FLOOR = 23,685 S.F.



**PARTIAL ATTIC FLOOR PLAN**  
SCALE: NOT TO SCALE



**SECOND FLOOR PLAN**  
SCALE: NOT TO SCALE  
SECOND FLOOR = 22,595 S.F.

CODE COMPLIANCE DATA	IBC 2006	
	DATA	REFERENCE
USE AND OCCUPANCY CLASSIFICATION	B BUSINESS GROUP (MODERATE HAZARD OCCUPANCY LIMITED TO FIRST FLOOR ONLY)	SECTION 304.1
TYPE OF CONSTRUCTION	TYPE II B (NONCOMBUSTIBLE UNPROTECTED) FULLY SPRINKLERED	TABLE 503
ALLOWABLE BUILDING HEIGHT	ALLOWABLE MAXIMUM HEIGHT - 55'-0" ALLOWABLE STORIES - FOUR (4)	TABLE 503
ACTUAL BUILDING HEIGHT	ACTUAL HEIGHT - 40'-0" +/- ACTUAL STORIES - TWO (2)	
ALLOWABLE AREA PER FLOOR	29,000 S.F. FLOOR FOR TYPE II B CONSTRUCTION AND AREA INCREASE OF 200 PERCENT FOR FULLY SPRINKLERED	TABLE 503 AND SECTION 506.3
ACTUAL AREA PER FLOOR	FIRST FLOOR 23,685 S.F. FULLY SPRINKLERED SECOND FLOOR 22,595 S.F. FULLY SPRINKLERED ATTIC FLOOR 22,595 S.F. FULLY SPRINKLERED	
FIRE RESISTANCE RATED CONSTRUCTION:	TYPE II B (NONCOMBUSTIBLE UNPROTECTED) FULLY SPRINKLERED	
EXTERIOR BEARING WALLS	0 HOUR	TABLE 602
EXTERIOR NON BEARING WALLS	0 HOUR	SECTION 104.5
EXIT ENCLOSURES (STAIRS)	1 HOUR	SECTION 1014.11
SHAFTS (VERTICAL)	1 HOUR	SECTION 101.4
MIXED USE & FIRE SEPARATION	1 HOUR	SECTION 319.1(E)
EXIT ACCESS CORRIDOR	0 HOUR	SECTION 1017.1
INTERIOR LOADBEARING PARTITIONS	0 HOUR	SECTION 116.0
FLOOR CONSTRUCTION	0 HOUR	SECTION 116.0
EXTERIOR BEARING WALLS	0 HOUR	SECTION 114.5
ROOF CONSTRUCTION	15' OR LESS	TABLE 601
	MORE THAN 15' BUT LESS THAN 20'	TABLE 601
	MORE THAN 20'	TABLE 601
PROTECTION OF INCIDENTAL USE AREAS:	LABORATORIES AND VOCATIONAL SHOPS, NOT CLASSIFIED AS GROUP H 1 HOUR OR PROVIDE AUTOMATIC FIRE-EXTINGUISHING SYSTEMS 1 HOUR OR PROVIDE AUTOMATIC FIRE-EXTINGUISHING SYSTEMS STORAGE ROOMS OVER 100 SQUARE FEET	SECTION 508.2.3 AND TABLE 508.2 SECTION 508.2.3 AND TABLE 508.2
OCCUPANT LOAD:	DESIGN LOAD PER FLOOR: FIRST FLOOR OCCUPANT LOAD (205 OCCUPANTS) SECOND FLOOR OCCUPANT LOAD (333 OCCUPANTS) ATTIC FLOOR (NO OCCUPANCY MECHANICAL SPACE ACCESS ONLY) (330 OCCUPANTS)	TABLE 1004.11
MEANS OF EGRESS:	MINIMUM NO. OF EXITS PER FLOOR 2 (3 PROVIDED) MAXIMUM EXIT ACCESS TRAVEL DISTANCE 300' WITH SPRINKLERS MAX 50' DEAD END CORRIDORS 100' WITH SPRINKLERS EGRESS CAPACITY DOORWAYS 0.15 IN PERSON CORRIDORS 32 INCH CLEAR DIMENSION 0.15 IN PERSON 44 INCH CLEAR DIMENSION	TABLE 1016.1 1016.1 1014.3 TABLE 1005.1 1005.1.1 TABLE 1005.1 1016.2
INTERIOR FINISHES	VERTICAL EXITS & EXIT PASSAGEWAYS CLASS A	TABLE 803.5
FLAME SPREADS	CORRIDOR CLASS A ROOMS CLASS A	803 803
FIRE PROTECTION SYSTEMS	AUTOMATIC SPRINKLER SYSTEM PORTABLE FIRE EXTINGUISHERS (MIN. ONE PER FLOOR - 3 MIN. ONE PER SHOP OR SPECIAL HAZARD AREA AND ONE PER COMBUSTIBLE OF FLAMMABLE LIQUID STORAGE AREA)	SECTION 903 SECTION 906 OF IFC
ACCESSIBILITY	ACCESSIBLE PARKING ACCESSIBLE ENTRANCE ACCESSIBLE TOILETS FACILITIES SECOND FLOOR ACCESSIBLE BY ELEVATOR	SECTION 1100
ELEVATORS AND CONVEYING SYSTEMS	HOISTWAY ENCLOSURE	SECTION 3002
ELECTRICAL	ELECTRICAL SYSTEMS UPGRADES PER ELECTRICAL DRAWINGS	SECTIONS 2101 AND 2102
MECHANICAL SYSTEMS	MECHANICAL SYSTEMS UPGRADES PER MECHANICAL DRAWINGS	SECTIONS 2801 AND 2802
PLUMBING SYSTEMS	PLUMBING SYSTEMS UPGRADES PER PLUMBING DRAWINGS	SECTIONS 2101 AND 2102

REVISIONS:	4/29/04	ADDENDUM #1

THE CONTRACTOR SHALL VERIFY ALL DIMENSIONS AND EXISTING CONDITIONS AT THE SITE BEFORE PROCEEDING WITH EACH PHASE OF HIS WORK. THIS DRAWING, AS AN INSTRUMENT OF SERVICE, IS AND SHALL REMAIN THE PROPERTY OF THE ARCHITECT.  
© Murray Associates Architects, P.C.

CONSULTANT: STRUCTURAL ENGINEER  
**WHITNEY BAILEY, COX & MAGNANI, LLC**  
355 N. 21ST. STREET, SUITE 100  
CAMP HILL PA. 17011  
717-750-6032

CONSULTANT: M / E / P ENGINEER  
**GATTER & DIEHL, INC.**  
2400 PARK DRIVE  
HARRISBURG, PA. 17110  
717-657-4700



**PHASE II CCTA HARRISBURG AREA COMMUNITY COLLEGE HARRISBURG, PA**

CODE REVIEW

CONSTRUCTION DOCUMENTS

DRAWN BY: CHECKED BY: BHD

PLOT NO. DATE: A226\_C803\_FULL APRIL 29, 2004

PROJECT NO. 3226

DRAWING NO. AO.1  
BASE BID