

ADDENDUM #1

June 21, 2010

Re: Harrisburg Area Community College
Evans Physical Education Center - Pool Drain Replacement
Solicitation #10-54

From: Eastern PCM, LLC
Construction Manager – HACC
645 N. 12th Street, Suite 200
Lemoyne, PA 17043

To: All Planholders

This Addendum is hereby made part of the Plans and Project Manual dated June 4, 2010 for the above referenced project. The provisions of this Addendum are intended to supplement the provisions of the Plans and Project Manual and/or supersede them where contradictory thereto.

This Addendum contains changes to the requirements of the Plans and Project Manual. Such changes shall be incorporated into the Plans and Project Manual and shall apply to work with the same meaning and force as if they had been included in the original Plans and Project Manual. Where this Addendum modifies a portion of a paragraph or phrase of the Project Manual, the remaining unmodified portion of the paragraph or phrase shall remain in force.

The conditions and terms of the Plans and Project Manual shall govern work described in this Addendum. Whenever the conditions of work, or the quality or quantity of materials or workmanship are not fully described in this Addendum, the conditions of work etc. included in the Plans and Project Manual for similar items of work shall apply to the work described in this Addendum. If no similar items of work are included in the Plans and Project Manual, the quality of material and workmanship shall be subject to the written acceptance of the Architect.

1.1 CLARIFICATIONS

Q. Are hydrostatic vents present in the pools?

A. No.

Q. Are Plumbing Permits required?

A. No, this is covered under the general permit obtained by the Owner per the City of Harrisburg.

Q. The drawing shows the new drain being 10” connecting to a 6” existing pipe. Is this correct?

A. It is believed that this is referring to detail 4/SP2 which shows a 10” flange connection on the new main drain, which is simply the manufacturer’s standard for that product. The flange must be mated to a 10” PVC flange which would receive a bushing down to 6”. The actual pipe connection is 6” as shown on the drawings.

Q. Is the Contractor responsible for pumping water from the pools?

A. The Owner will drain the pools prior to the start of construction. The Contractor is responsible for removing any water after the start of construction.

Q. Detail 7/SP2 shows for vacuum ports to be capped or plugged, should they be tiled over where visible at the pool surface?

A. The Contractor shall plug the vacuum ports and not tile over.

1.2 PRE-BID MEETING MINUTES

Meeting minutes from the Pre-Bid Meeting held on June 15, 2010 are attached and are a part of this Addendum. In the event of a conflict between the information contained in the Pre-Bid Meeting Notes and the Drawings, Specifications and responses to questions contained in this Addendum, the latter shall take precedence.

END OF ADDENDUM



Please sign and return this page, via fax, to Eastern PCM, LLC at (717) 233-1666 indicating receipt of this Addendum.

Addendum # _____ has been received.

Company: _____
Print Company Name

Received By: _____
Print Name Signature

Date: _____

Please check one:

- _____ We are bidding as a prime contractor
- _____ We are not bidding
- _____ We are a sub-contractor

**Harrisburg Area Community College
Evans Gym Pool Drain Repair**

Pre-Bid Meeting

June 15, 2010

1:00 PM

Meeting Minutes

Attendees

Gavin Grimes – Main Line Pools

Chuck Carter – Boyer Swimming Pools

Mark McCammon – Eastern PCM (EPCM)

1.0 Introduction of Team

- a) Owner
Harrisburg Area Community College
Joe Wojtysiak – Campus Senior Director, Facilities Management
Lisa Cleveland – Director of Athletics and Recreation
- b) Engineer
Johnson, Mirmiran, and Thompson
Mike Sichel – Senior Associate
- c) Pool
Atlantic Aquatic Engineering, Inc.
John Bray - President
- d) Construction Manager
Eastern PCM, LLC
Mark McCammon – Project Manager
Kelly Foreman – Project Engineer

1.1 Bid Documents

- a) EPCM reviewed the bid form found in Section 00410 of the specifications.
- b) Bid Bond required if the bid is greater than \$10,000 with surety of Performance & Payment Bond if greater than \$50,000.
- c) Bidders must acknowledge Addendums.
- d) Bidders must submit non-collusion affidavit with bid.
- e) MBE/WBE utilization form must be returned with bids even if MBE/WBE vendors are not used.
- f) Two (2) copies of the Bid Documents are required to be submitted.
- g) Bids are to be delivered to Whitaker Hall Room 130 – Purchasing Office.

1.2 Schedule

The revised dates are as follows:

Last day for bid questions	June 25, 2010 @ 12:00 PM
Bids Due	July 1, 2010 @ 2:00 PM
Notice of Award	July 7, 2010
Construction Start	July 12, 2010
Substantial Completion	August 13, 2010



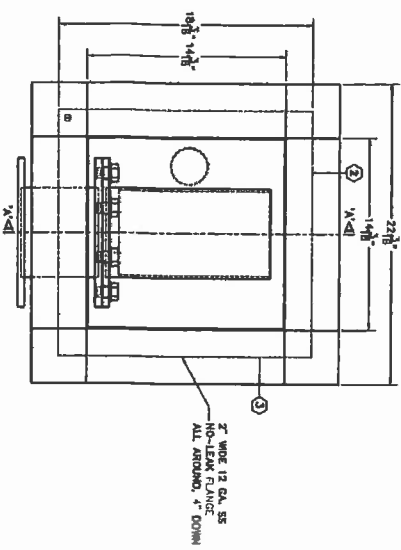
- 1.3 Questions concerning the bid are to be submitted in writing to Mark McCammon at EPCM via fax (717) 233-1666 or e-mail mmccammon@easternpcm.com. The last day for questions is June 25, 2010 at 12:00 PM.
- 1.4 The project is subject to Pennsylvania Prevailing Wage Rates found in Specification Section 00820 with Serial #10-03591. Certified Payrolls shall be submitted with Application for Payment.
- 1.5 Owner will secure a general building permit. Contractor(s) are responsible for all trade specific permits.
- 1.6 Project Overview
 - a) Owner will drain, fill and chemically balance the pools.
 - b) Project is bid as a single prime contract.
 - c) Contractor parking is available in the East lot adjacent to the building.
 - d) Work hours are 7am – 5pm Monday – Friday or with approval of Owner and Construction Manager.
 - e) Dumpster and staging will be on the East side of the building.
 - f) Building will be occupied during the construction but the pool area will be closed to the public. Contractor is responsible for securing the work area.
 - g) Contractor is responsible for dust control and daily clean-up. The contractor is to keep non-work areas free of dust from construction.
 - h) Owner has pre-purchased the drains and sumps. (Cut sheets are attached).

Respectfully Submitted,
Mark McCammon, Eastern PCM, LLC

The above summations are the interpretation of the author as to the items discussed and the decisions reached. Corrections or additions to these minutes are to be made in writing and sent to the attention of the writer no later than 5 days after receipt; otherwise, these minutes will stand as written.

cc: All Attendees



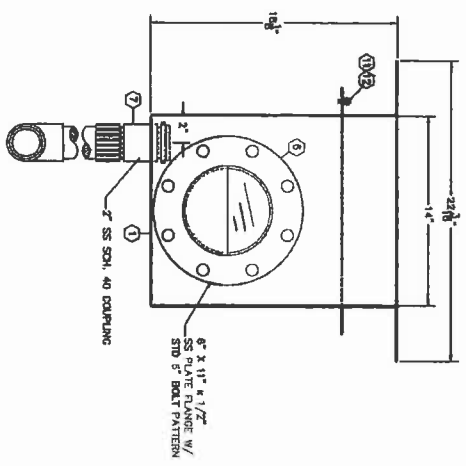


1414 ESMO PLAN
SCALE: 1/4" = 1'

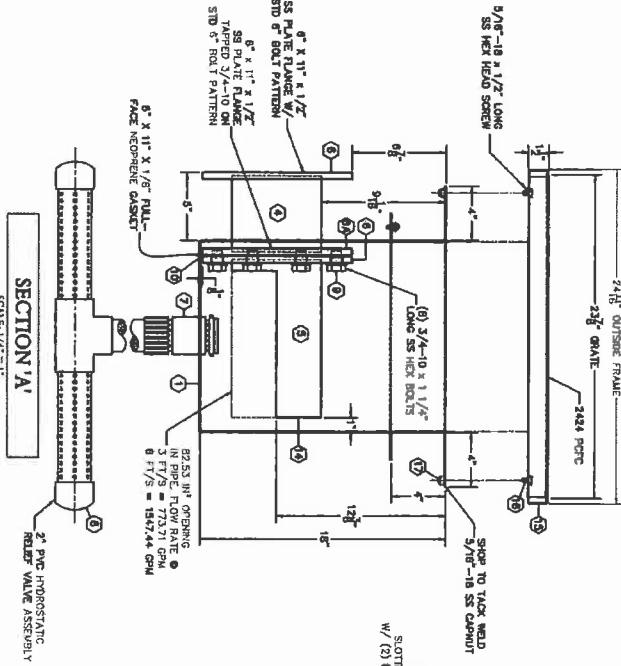
1414 ESMO MATERIAL SCHEDULE

ITEM	QTY.
1	1
2	2
3	2
4	2
5	1
6	1
6A	1
7	1
8	1
9	1
10	1
11	1
12	2
13	2
14	1
15	1
16	4
17	4

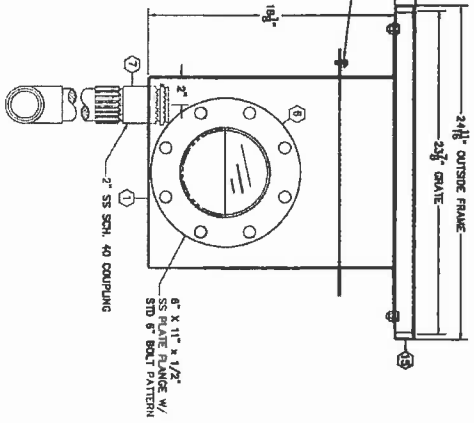
ATTENTION:
 FABROCK BRIDGE GRATE FRAMES SHALL BE CONFORMANT WITH THE FOLLOWING:
 1. FABROCK BRIDGE GRATE FRAMES SHALL BE CONFORMANT WITH THE FOLLOWING:
 2. FABROCK BRIDGE GRATE FRAMES SHALL BE CONFORMANT WITH THE FOLLOWING:
 3. FABROCK BRIDGE GRATE FRAMES SHALL BE CONFORMANT WITH THE FOLLOWING:
 4. FABROCK BRIDGE GRATE FRAMES SHALL BE CONFORMANT WITH THE FOLLOWING:
 5. FABROCK BRIDGE GRATE FRAMES SHALL BE CONFORMANT WITH THE FOLLOWING:
 6. FABROCK BRIDGE GRATE FRAMES SHALL BE CONFORMANT WITH THE FOLLOWING:
 7. FABROCK BRIDGE GRATE FRAMES SHALL BE CONFORMANT WITH THE FOLLOWING:
 8. FABROCK BRIDGE GRATE FRAMES SHALL BE CONFORMANT WITH THE FOLLOWING:
 9. FABROCK BRIDGE GRATE FRAMES SHALL BE CONFORMANT WITH THE FOLLOWING:
 10. FABROCK BRIDGE GRATE FRAMES SHALL BE CONFORMANT WITH THE FOLLOWING:
 11. FABROCK BRIDGE GRATE FRAMES SHALL BE CONFORMANT WITH THE FOLLOWING:
 12. FABROCK BRIDGE GRATE FRAMES SHALL BE CONFORMANT WITH THE FOLLOWING:
 13. FABROCK BRIDGE GRATE FRAMES SHALL BE CONFORMANT WITH THE FOLLOWING:
 14. FABROCK BRIDGE GRATE FRAMES SHALL BE CONFORMANT WITH THE FOLLOWING:
 15. FABROCK BRIDGE GRATE FRAMES SHALL BE CONFORMANT WITH THE FOLLOWING:
 16. FABROCK BRIDGE GRATE FRAMES SHALL BE CONFORMANT WITH THE FOLLOWING:
 17. FABROCK BRIDGE GRATE FRAMES SHALL BE CONFORMANT WITH THE FOLLOWING:



SS BOX ELEVATION
SCALE: 1/4" = 1'



SECTION 'A-A'
SCALE: 1/4" = 1'



1414 ESMO ELEVATION
SCALE: 1/4" = 1'

2424 PORC STAINLESS STEEL FRAME AND GRATE

VELOCITY (F/200)	OPEN AREA (SQ FT)	MAX. FLOW (GPM)	TOTAL QTY	TOTAL OPEN AREA (SQ FT)	TOTAL MAX FLOW (GPM)
1.37	312.88	915	1	312.88	915.00
1.0	212.88	665.28	1	212.88	665.28
0.5	212.88	332.64	1	212.88	332.64

* THE MAXIMUM FLOW IS THE MAXIMUM DESIGN FLOW IS BASED ON A VELOCITY THAT DOES NOT EXCEED THE RECOMMENDED MAXIMUM DESIGN FLOW AS SET FORTH IN THE FABROCK BRIDGE GRATE DESIGN MANUAL. THE RECOMMENDED MAXIMUM DESIGN FLOW IS BASED ON A VELOCITY THAT DOES NOT EXCEED THE RECOMMENDED MAXIMUM DESIGN FLOW AS SET FORTH IN THE FABROCK BRIDGE GRATE DESIGN MANUAL.

VGB 2008
NSF
FABROCK
 FABROCK BRIDGE GRATE EQUIPMENT CO. INC.
 11/27/08

DATE	REV	DESCRIPTION
12/04/08	1	ISSUED 3/4"-10 X 1" LONG GRATE TO 24"-10 X 11 1/2" LONG BRIDGE FOR 108" DIA

DATE	BY	REVISION
12/07/09	1	QUANTITY 7/8" x 1/4" LAMB LEGS IS 2/PCS 1 1/4" LAMB LEGS FOR RIG

NOTED & APPROVED AS SUBMITTED:

DESIGNED BY: [Signature]

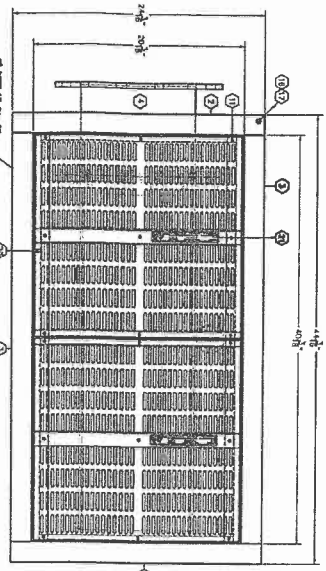
PROJECT: [Project Name]

ATTENTION:

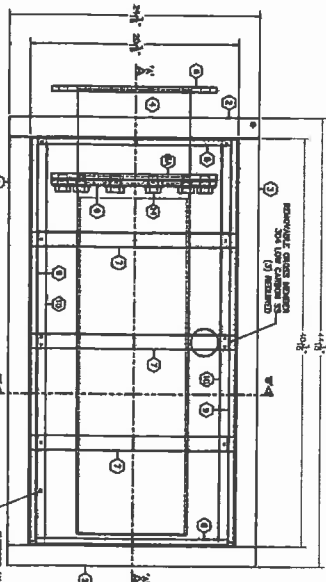
POURING ACTION OUTLET FITTING DIRECTION 2040 CDM-11-11" 2008 MUST BE INSTALLED BY A SCHEDULED PUMP INSTALLATION.

PARAMETERS:

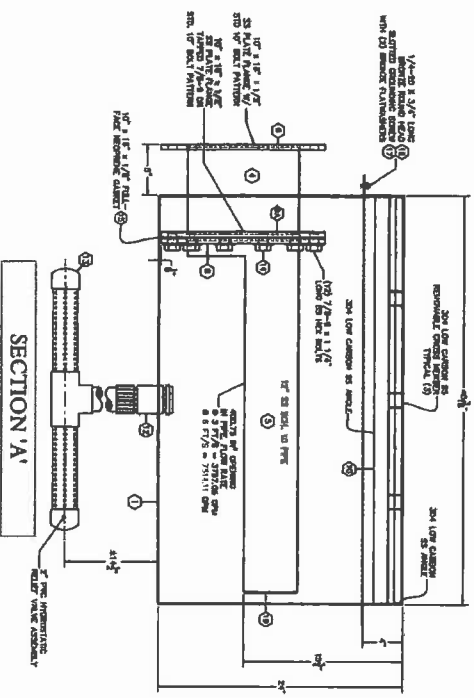
- CONCRETE MATERIAL LISTS
- INSTALL A BRISTLE LINE
- INSTALL THE FLOOR ON WALL LINE CANNOT BE LOCATED
- IN SETTING AREA OR USED AS A SUPPORT
- DO NOT REMOVE/REMOVE HAVE BEEN A NOT PHOTO
- VELOCITY OF 15 FPS



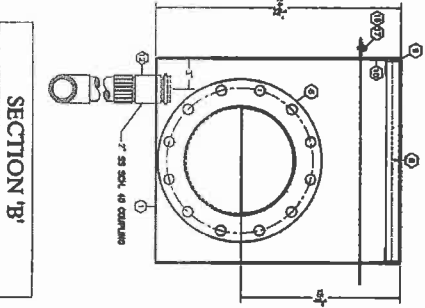
ASSEMBLY PLAN
SCALE: 3/16" = 1"



FRAMING PLAN
SCALE: 3/16" = 1"



SECTION 'A'
SCALE: 3/16" = 1"



SECTION 'B'
SCALE: 3/16" = 1"

ITEM	DESCRIPTION	QTY
1	SHIELD 20" X 40" X 24" X 12 GA. 304 LOW CARBON SS	1
2	2" NO LEAK FLANGE 12 GA. 304 LOW CARBON SS	1
3	2" NO LEAK FLANGE 12 GA. 304 LOW CARBON SS	1
4	SPROCK. 10" SCD. 10 304 LOW CARBON SS PIPE	1
5	FLANGE 10" X 10" X 1/2" 304 LOW CARBON SS	1
6	FLANGED FLANGE 10" X 10" X 1/2" 304 LOW CARBON SS	1
7	REMOVABLE CROSS MEMBER 1 5/8" X 1 9/16" X 1 9/16" X 12 GA. 304 LOW CARBON SS	1
8	SUPPORT ANGLE 12 GA. 304 LOW CARBON SS	4
9	SUPPORT ANGLE 12 GA. 304 LOW CARBON SS	4
10	SUPPORT ANGLE 12 GA. 304 LOW CARBON SS	4
11	6-32 X 1/2" PAN HEAD PHILLIPS 316L SS TORQUE RATING 18.8 INCH LBS.	16
12	2" SS COUPLING	1
13	2" PVC HYDROSTATIC RESIST. VALVE ASSEMBLY	1
14	7/8"-8 X 1 1/4" LAMB SS HEX BOLT	12
15	10" X 10" X 3/4" FULL FACE METEORITE GASKET	1
16	1/4"-20 X 3/4" LAMB BRONZE ROUND HEAD BOTTED GRINDING SCREW	1
17	1/4"-20 BRONZE FLANGERS	2
18	BLANK FOUR FIELD TEST (NOT SHOWN)	1
19	BRONZE VALVE 12 GA. 304 LOW CARBON SS	1
20	ORANGE 18 13/16" X 1 13/16" X 1 13/16" X 12 GA. 304 LOW CARBON SS (2008 POOD)	1
21	NSF/ANSI CONTRADICTION LABEL (FOR 2020 POOD GRATE)	2

2020 304 STAINLESS STEEL FRAME AND GRATE

VELOCITY (FT/SEC)	ORIG AREA (SQ FT)	NO. FLOW (SQ FT)	TOTAL ORIG (SQ FT)	TOTAL MAX (SQ FT)
1.5	124.14	512.53	2	1143.06
1.0	124.14	361.69	2	784.36
0.5	124.14	180.84	2	392.18

NSF MAXIMUM ALLOWABLE FLOW RATE OF TWO (2) 2020 POODS EQUALS 1800 GPM

* THIS MAX FLOW RATE IS THE MAXIMUM FLOW RATE OF TWO (2) 2020 POODS EQUALS 1800 GPM

NOTED: 1. THE MAXIMUM FLOW RATE IS BASED ON A VELOCITY THAT DOES NOT EXCEED 1.5 FT/SEC. 2. THE MAXIMUM FLOW RATE IS BASED ON A VELOCITY THAT DOES NOT EXCEED 1.5 FT/SEC. 3. THE MAXIMUM FLOW RATE IS BASED ON A VELOCITY THAT DOES NOT EXCEED 1.5 FT/SEC.

NSF VGB 2008

© PADDOCK POOL EQUIPMENT CO INC. 10/18/09

Paddock Pool Equipment Co. Inc.

2000 2020 POOD FOR NSF