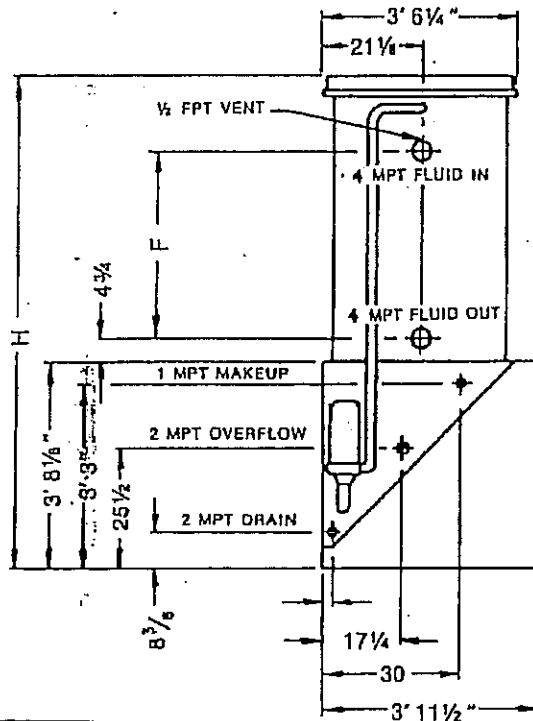


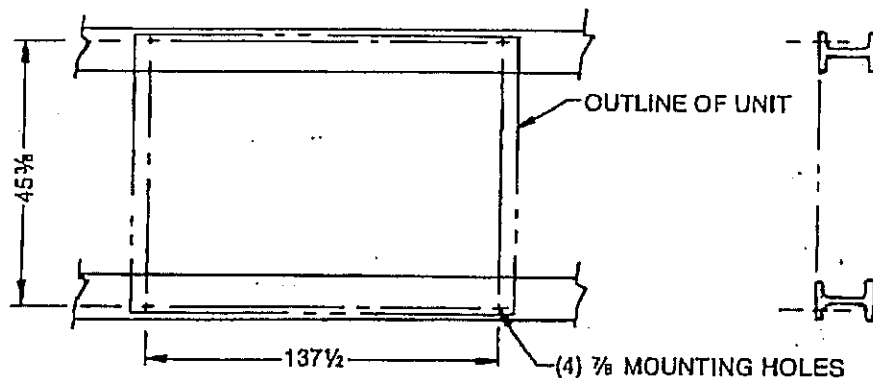
SK1
November 13, 2007



(M) Fan motor location

MODEL NO.	APPROX. SHIPPING WEIGHT	APPROX. OPERATING WEIGHT	F	H
VXI 36-2	4530	6050	27 3/4	8' 6"
VXI 36-3	5140	6850	48 1/4	9' 4 1/2"

SUGGESTED SUPPORT DETAILS

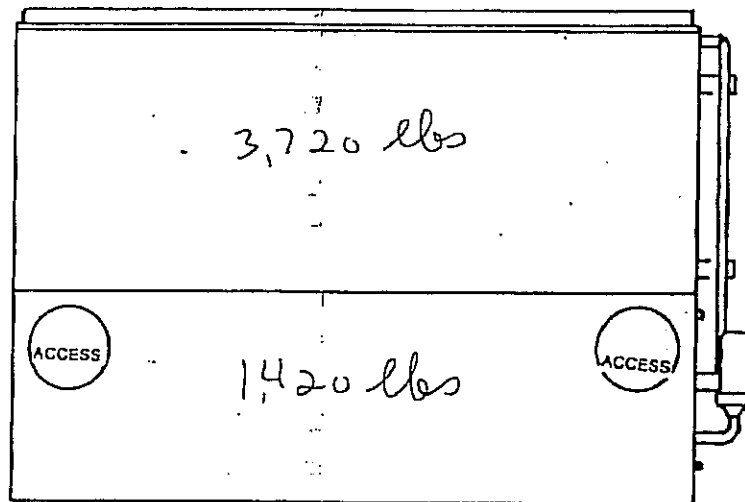
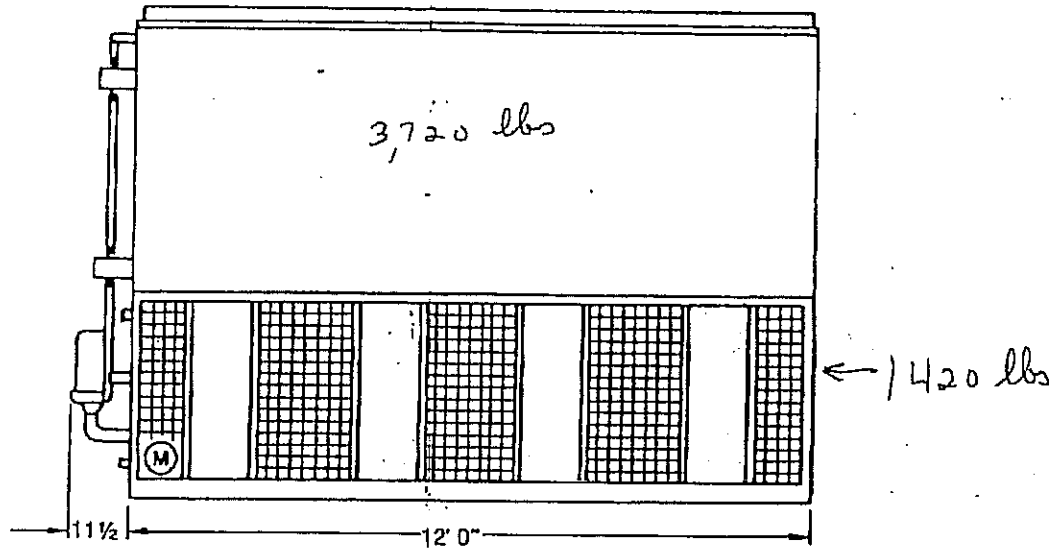


NOTES:

1. The recommended support arrangement for VX units consists of two parallel I-beams extending the full length of the unit. Supports and anchor bolts are to be designed and furnished by others.
2. All supporting beams are to be flush and level at top and must be oriented relative to gage line as shown.
3. Recommended design loads for each beam should be 65% of the total unit operating weight applied as a uniform load to each beam. Beams should be designed in accordance with standard structural

4. All mounting holes are 7/8 inch dia. at the locations shown.
5. If vibration isolators are used, a rail or channel must be provided between the unit and the isolators to provide continuous unit support. Additionally the support beams must be designed to accommodate the overall length and mounting hole location of the isolators which may differ from those of the unit. Refer to vibration isolator drawings for these data.

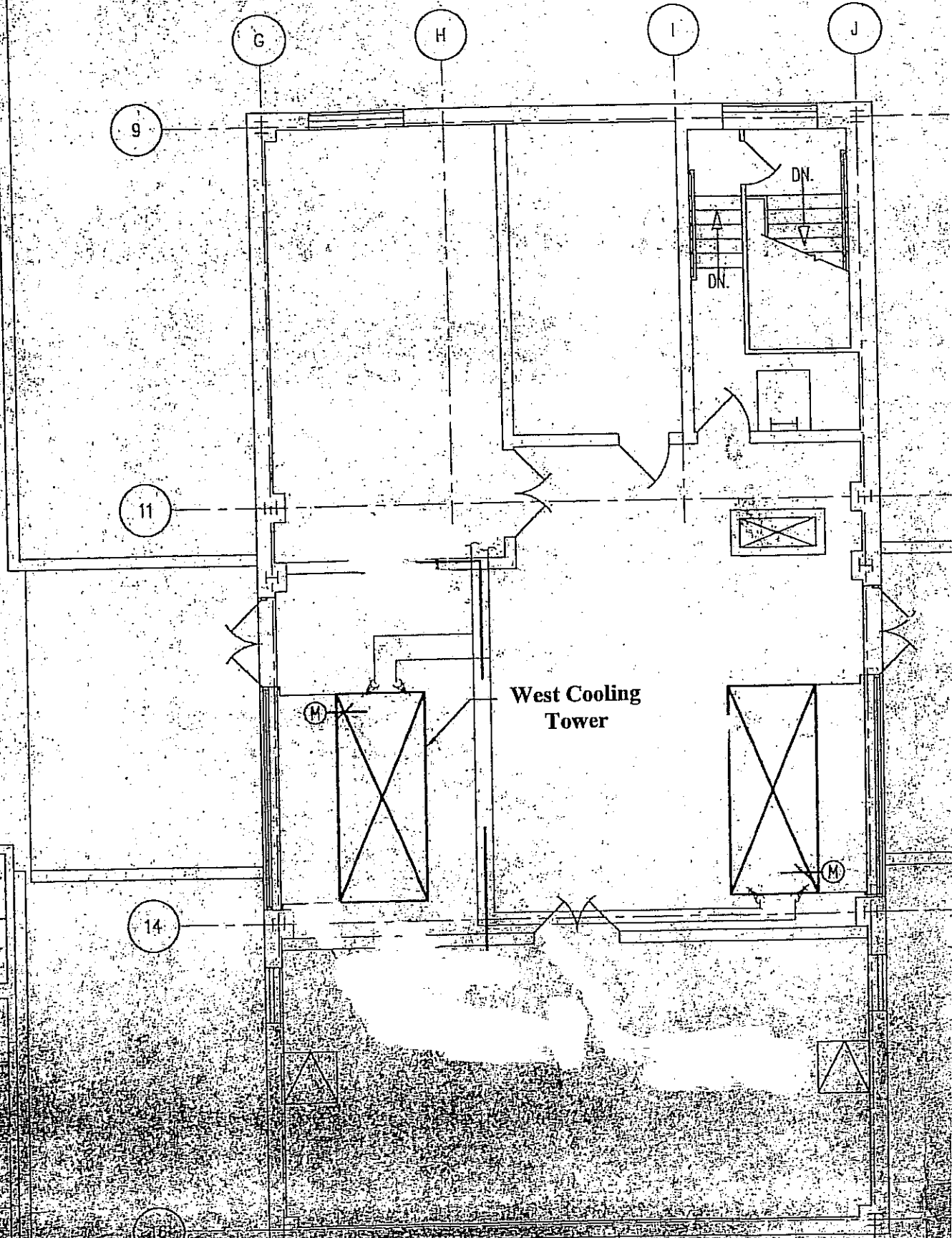
SK2
November 13, 2007



- NOTES: 1. All dimensions are in feet and inches. Weights are in pounds.
2. Unless otherwise indicated, all connections 6 inches and smaller are MPT and connections 8 inches and larger are bevelled for welding.
3. Dimensions showing location of coil connections are approximate and should not be used for prefabrication of connecting piping.

B.A.C. ORDER NO.	BALTIMORE AIRCOIL AFFILIATE OF MERCK & CO., INC	INDUSTRIAL FLUID COOLER
DATE		DWG. NO.

SK3
November 13, 2007



HALL TECHNOLOGY BUILDING

PENTHOUSE ROOF PLAN - HVAC