

# HARRISBURG AREA COMMUNITY COLLEGE GETTYSBURG CAMPUS MANSARD ROOF REPAIR & REPLACEMENT

## SHEET LIST

### SHEET NAME

CRI-1 - CRI-3  
RA-1 - RA-8  
RA-9 - RA17

### SHEET NAME

CONSTRUCTION REPAIR ITEMS  
ELEVATIONS  
DETAILS

### ARCHITECT:

DAVIDSON & ASSOCIATES  
8120 WOODMONT AVENUE, SUITE 450  
BETHESDA, MD 20814

### CONSTRUCTION MANAGER:

EASTERN PCM, LLC  
645 N. 12TH STREET, SUITE 200  
LEMOYNE, PA 17043

08/22/2014  
CONSTRUCTION DOCUMENTS

**CONSTRUCTION REPAIR ITEMS**

GENERAL: THE CONSTRUCTION NOTES IDENTIFIED BELOW ARE INTENDED TO PROVIDE A WRITTEN SUMMARY OF THE BUILDING ENVELOPE REPAIR SCOPE. THEY ARE NOT INTENDED TO DICTATE A SPECIFIC REPAIR SEQUENCE, WHICH IS CONSIDERED “MEANS AND METHODS” AND IS THE GENERAL CONTRACTOR’S RESPONSIBILITY TO ESTABLISH. REMOVAL AND REINSTALLATION OF ANCILLARY WALL MOUNTED ITEMS AS NEEDED, ARE INCLUDED IN THE SCOPE OF WORK EVEN THOUGH NOT SPECIFICALLY NOTED.

- 1 REMOVE PLANTING BED AGAINST EXTERIOR/FOUNDATION WALL AS NECESSARY TO MODIFY BASE TERMINATION OF EIFS. THOROUGHLY CLEAN THE EXPOSED FOUNDATION WALL. CUT BASE TERMINATION OF EIFS AT 45 DEGREE ANGLE TO CREATE A CHAMFER. REMOVE EIFS FINISH AND BASE COAT 3” UP FROM TOP OF CHAMFER. REMOVE FINISH COAT USING A WATER-BASED GEL PAINT REMOVER. REMOVE TOP LAYER OF BASE COAT BY SANDING OR GRINDING TAKING CARE NOT TO DAMAGE THE MESH LAYER. EMBED STANDARD WEIGHT REINFORCING MESH IN CEMENTITIOUS BASE COAT OVER THE AREA EXTENDING DOWN TO FOUNDATION FEATHERING EDGES OF BASE COAT. APPLY EIFS FINISH COAT IN ACCORDANCE WITH EIFS RECOATING SPECIFICATION, CONSTRUCTION REPAIR ITEM NO. 6. *SEE DETAIL 1/RA-13.*
- 2 REMOVE BRICK VENEER ABOVE FOUNDATION/CONCRETE SLAB AS NECESSARY TO EXPOSE THROUGH WALL BASE FLASHING (3 TO 5 COURSES) AND WRB. REMOVE HORIZONTAL LEG OF FLASHING AT FOUNDATION/SLAB. INSPECT AND REPAIR ANY DAMAGED WEATHER RESISTIVE BARRIER (WRB) AND/OR SHEATHING AS NEEDED. CLEAN FOUNDATION/SLAB AND INSTALL NEW STAINLESS STEEL DRIP WITH HEMMED EDGE SET IN CONTINUOUS SEALANT AGAINST FOUNDATION/SLAB. INSTALL NEW FLEXIBLE SELF-ADHERING (SA) FLASHING OVER DRIP EDGE. HOLD SA FLASHING BACK FROM FACE OF BRICK. EXTEND SA FLASHING OVER EXISTING VERTICAL FLASHING LEG AND BEHIND WRB. TERMINATE NEW FLASHING WITH METAL COMPRESSION BAR. INSTALL PRE-MOLDED END DAM RETURNS SET IN CONTINUOUS SEALANT WHERE BRICK VENEER TERMINATES AT MANUFACTURED STONE VENEER. INSTALL NEW BRICK VENEER TO MATCH EXISTING, AND NEW VENEER ANCHORS (HECKMAN POS-I-TIE WITH NEOPRENE WASHER OR EQUAL) BETWEEN THE 1<sup>ST</sup> AND 2<sup>ND</sup> COURSES OF VENEER AT 24” O.C. INSTALL NEW HEAD JOINT WEEP VENTS IN BRICK DIRECTLY ABOVE FLASHING AT 16” O.C. *SEE DETAIL 2/RA-9.*
- 3 REMOVE BRICK VENEER ABOVE CONCRETE SLAB AS NECESSARY TO EXPOSE THROUGH WALL BASE FLASHING (3 TO 5 COURSES) AND WRB. REMOVE HORIZONTAL LEG OF FLASHING AT SLAB. INSPECT AND REPAIR ANY DAMAGED WEATHER RESISTIVE BARRIER (WRB) AND/OR SHEATHING AS NEEDED. CLEAN SLAB AND INSTALL NEW FLEXIBLE SELF-ADHERING (SA) FLASHING WITH INTEGRAL DRIP OVER EXISTING VERTICAL FLASHING LEG AND BEHIND WRB. EXTEND FLASHING ONTO SLAB WITH INTEGRAL DRIP EXTENDING PAST FACE OF BRICK. TERMINATE TOP EDGE OF NEW FLASHING WITH METAL COMPRESSION BAR AND SEALANT. INSTALL PRE-MOLDED END DAM RETURNS SET IN CONTINUOUS SEALANT WHERE BRICK VENEER TERMINATES AT MANUFACTURED STONE VENEER. INSTALL NEW BRICK VENEER TO MATCH EXISTING, AND NEW VENEER ANCHORS (HECKMAN POS-I-TIE WITH NEOPRENE WASHER OR EQUAL) BETWEEN THE 1<sup>ST</sup> AND 2<sup>ND</sup> COURSES OF VENEER AT 24” O.C. INSTALL NEW HEAD JOINT WEEP VENTS IN

BRICK DIRECTLY ABOVE FLASHING AT 16” O.C. CUT OFF FLASHING DRIP FLUSH WITH FACE OF BRICK. *SEE DETAIL 1/RA\_9.*

- 4 REMOVE BRICK BELOW EIFS SOFFIT (ALL SIDES OF PIER) AS NEEDED TO VERIFY WHETHER BRICK IS RESTRAINED BY CONCEALED STRUCTURE/FRAMING. WHERE RESTRAINED REMOVE ADDITIONAL BRICK AND ADJACENT CRACKED/DAMAGED BRICK VENEER LEAVING A MINIMUM 3/8” GAP BETWEEN THE BRICK AND EXISTING STRUCTURE/FRAMING. INSTALL NEW BRICK TO MATCH EXISTING. REPLACE EXISTING SEALANT BETWEEN BRICK PIER AND EIFS FASCIA SOFFIT THAT BECOMES DAMAGED DUE TO MASONRY REPAIRS WITH NEW SEALANT AND BACKER ROD.
- 5 REMOVE EXISTING METAL COPING AS NEEDED TO EXPOSE TOP TERMINATION OF EIFS FASCIA/SOFFIT. REMOVE EXISTING EIFS FINISH COAT A MINIMUM OF 3” BELOW THE TOP OF THE FASCIA/SOFFIT USING A WATER-BASED GEL PAINT REMOVER. REMOVE TOP LAYER OF BASE COAT BY SANDING/GRINDING TAKING CARE NOT TO DAMAGE MESH LAYER. EMBED STANDARD WEIGHT REINFORCING MESH IN CEMENTITIOUS BASE COAT CENTERED OVER THE REPAIR AREA AND OVER EXPOSED EDGES OF RIGID INSULATION EDGE OF EIFS, LAPPING THE EXISTING MESH A MINIMUM OF 2 1/2” AND FEATHERING EDGES OF BASE COAT. MASK AROUND AREA TO BE REFINISHED (RECOATED) THEN APPLY EIFS FINISH COAT. TROWEL AND FLOAT FINISH COAT TO MATCH EXISTING ADJACENT TEXTURE. *SEE DETAILS 1/RA-1, 2/RA-12 & 2/RA-14 (SIMILAR).*
- 6 REPAIR EIFS IN ACCORDANCE WITH CONSTRUCTION REPAIR ITEM NO. 1 OR 5 ABOVE. THOROUGHLY CLEAN EXISTING EIFS TO BE RECOATED IN ORDER TO REMOVE DIRT, ALGAE AND/OR MILDEW ACCUMULATION. APPLY COMMERCIALY AVAILABLE CLEANING SOLUTION TO WALL SURFACE AND ALLOW TO SOAK. FOR HEAVY DEPOSITS, LIGHTLY SCRUB AFFECTED AREA WITH SOFT-MEDIUM BRISTLE BRUSH. IF PRESSURE WASHER IS USED MAINTAIN MINIMUM DISTANCE OF 3’ FROM SURFACE WITH WATER PRESSURE NOT TO EXCEED 500 PSI. AFTER CLEANING SOLUTION HAS SOAK SURFACE THOROUGHLY RINSE WITH CLEAN WATER AND ALLOW TO DRY. PROTECT ADJACENT AREAS THAT ARE NOT TO BE RECOATED FROM OVERSPRAY, SPLATTER, ETC. APPLY HIGH-BUILD ELASTOMERIC COATING MATERIAL BY SPRAY, ROLLER OR BRUSH IN ACCORDANCE WITH MANUFACTURER’S RECOMMENDATIONS. PROTECT INSTALLED COATING FROM RAIN AND FREEZING UNTIL COMPLETELY DRY. FOR WALL MOUNTED ITEMS THAT ARE REMOVABLE, DO SO TO PERMIT CONTINUOUS RECOATING OF THE WALL. WHERE ITEMS ARE NOT REMOVABLE, MASK ITEM AND EXTEND RECOATING MATERIAL UP TO ITEM.
- 7 REPLACE SHATTERED HORIZONTAL PVC DRAIN LEADER WITH NEW CAST IRON (C.I.) PIPE/ELBOWS TO MATCH SIZE OF EXISTING VERTICAL METAL DRAIN LEADER. REMOVE SHEATHING AS NEEDED TO ACCESS EXISTING VERTICAL DRAIN LEADER. CONNECT NEW METAL LEADER TO EXISTING ROOF DRAIN AND VERTICAL DRAIN LEADER WITH RUBBER COUPLING AND ADJUSTABLE METAL CLAMPS. INSULATE HORIZONTAL LEADER AND ELBOWS WITH PVC JACKETED MINERAL WOOL INSULATION. INSTALL NEW SHEATHING WHERE PREVIOUSLY REMOVED.
- 8 REMOVE BRICK VENEER AT BASE OF PIER CONTAINING ROOF DRAIN OUTLET AS NEEDED TO INSTALL INSULATION ON HORIZONTAL PVC PIPE. LIFT EXISTING WRB AND REMOVE EXISTING SHEATHING TO EXPOSE HORIZONTAL PVC ROOF DRAIN OUTLET. INSPECT FOR DAMAGE AND REPLACE IF NECESSARY. INSTALL PVC JACKETED MINERAL WOOL

## HACC – GETTYSBURG CAMPUS

INSULATION ON HORIZONTAL SECTION OF PIPE AND ELBOW TO VERTICAL DRAIN LEADER. INSTALL NEW EXTERIOR SHEATHING APPLY SEALANT TO JOINTS BETWEEN NEW AND EXISTING SHEATHING. INSTALL FLEXIBLE BUTYL-BASED, SELF-ADHERING FLASHING TO PVC PIPE WHERE IT PENETRATES SHEATHING. INTEGRATE FLASHING WITH EXISTING WRB. INSTALL NEW BRICK VENEER TO MATCH EXISTING. **SEE DETAIL 2/RA-9. COORDINATE WITH CONSTRUCTION REPAIR ITEM NO. 2 ABOVE.**

9 REMOVE INTERIOR LAY-IN CEILING TILES AS NEEDED TO ACCESS THE EXISTING COPPER SCUPPER BOX AND DRAIN LEADER. SALVAGE/STORE TILES FOR RE-INSTALLATION. CUT OUT THERMOPLASTIC ROOF MEMBRANE AT SCUPPER BOX TO EXPOSE FLANGES. REMOVE COPPER SCUPPER BOX AND DRAIN LEADER. FILL IN SCUPPER BOX HOLE THROUGH BACK OF BUILT-IN GUTTER SUBSTRUCTURE WITH PRESSURE PRESERVATIVE TREATED (P.T.) WOOD BLOCKING. CUT HOLE IN BOTTOM OF BUILT-IN GUTTER (THERMOPLASTIC ROOF MEMBRANE AND SUBSTRUCTURE) TO RECEIVE NEW 3" DRAIN LINER (WITH THERMOPLASTIC BASE AND CLAD METAL DROP SCUPPER) AND 5" ADJUSTABLE ALUMINUM DRAIN GUARD. INSERT DRAIN EXTENSION INTO NEW C.I. DRAIN LEADER AND SECURE CONNECTION WITH RUBBER COUPLING AND METAL CLAMPS. CONNECT C.I. DRAIN LEADER TO EXISTING VERTICAL METAL LEADER WITH RUBBER COUPLING/METAL CLAMPS. INSULATE NEW HORIZONTAL DRAIN LEADER/ELBOWS AND DRAIN SUMP WITH PVC JACKETED MINERAL WOOL INSULATION. REPAIR THERMOPLASTIC ROOF MEMBRANE IN ACCORDANCE WITH ROOF MANUFACTURER'S REQUIREMENTS AND AS NECESSARY TO MAINTAIN EXISTING ROOF WARRANTY IN FULL EFFECT. REINSTALL INTERIOR LAY-IN CEILING TILES. **SEE DETAIL 1/RA-11(SIMILAR).**

10 REMOVE INTERIOR LAY-IN CEILING TILES AS NEEDED TO EXPOSE HORIZONTAL DRAIN LEADERS. SALVAGE AND STORE TILES FOR REINSTALLATION. INSPECT AND REPAIR AS NEEDED. INSTALL PVC JACKETED MINERAL WOOL INSULATION OVER HORIZONTAL LEADER, DRAIN SUMP AND ELBOW AT CONNECTION TO VERTICAL DRAIN LEADER. REINSTALL LAY-IN CEILING TILES.

11 REMOVE EXISTING METAL COPING AND EIFS CLADDING AT FASCIA/SOFFIT. INSPECT EXISTING WOOD SUBSTRUCTURE BEHIND FASCIA AND BENEATH BUILT-IN GUTTER. REPAIR AS NEEDED. INSTALL NEW METAL FASCIA/SOFFIT FRAMING, GLASS MAT FACED GYPSUM SHEATHING AND WRB OVER SHEATHING. INTEGRATE WRB WITH SA FLASHING AND EXISTING THERMOPLASTIC ROOF MEMBRANE AT FRONT EDGE OF BUILT-IN GUTTER. SECURE EDGE OF ROOF MEMBRANE AND SEAL ALL JOINTS. REMOVE EXISTING ARCADE SOFFIT/CEILING PANELS AS NEEDED TO ACCESS EXISTING COPPER SCUPPER BOX AND LEADER. SALVAGE FOR REINSTALLATION. CUT OUT THERMOPLASTIC ROOF MEMBRANE AT SCUPPER BOX TO EXPOSE FLANGES. REMOVE COPPER SCUPPER BOX AND DRAIN LEADER. FILL IN SCUPPER BOX HOLE THROUGH BACK OF BUILT-IN GUTTER SUBSTRUCTURE WITH PRESSURE PRESERVATIVE TREATED (P.T.) WOOD BLOCKING. CUT HOLE IN BOTTOM OF BUILT-IN GUTTER (THERMOPLASTIC ROOF MEMBRANE AND SUBSTRUCTURE) TO RECEIVE NEW 3" DRAIN LINER (WITH THERMOPLASTIC BASE AND CLAD METAL DROP SCUPPER) AND 5" ADJUSTABLE ALUMINUM DRAIN GUARD. INSERT DRAIN EXTENSION INTO NEW C.I. DRAIN LEADER AND SECURE CONNECTION WITH RUBBER COUPLING AND METAL CLAMPS. CONNECT C.I. DRAIN LEADER TO EXISTING VERTICAL METAL LEADER WITH RUBBER COUPLING/METAL CLAMPS. INSULATE NEW HORIZONTAL DRAIN LEADER/ELBOWS AND DRAIN SUMP WITH PVC JACKETED MINERAL WOOL INSULATION. REPAIR THERMOPLASTIC ROOF MEMBRANE IN ACCORDANCE WITH

## HACC – GETTYSBURG CAMPUS

ROOF MANUFACTURER'S REQUIREMENTS AND AS NECESSARY TO MAINTAIN EXISTING ROOF WARRANTY IN FULL EFFECT. INSTALL NEW EIFS CLADDING AT FASCIA/SOFFIT. INSTALL NEW METAL COPING WITH END WALL FLASHING SPLICE PLATES. REINSTALL ARCADE SOFFIT/CEILING PANELS. **SEE DETAILS 1/RA-10 & 1/RA-11. COORDINATE WITH CONSTRUCTION REPAIR ITEM NOS. 5 ABOVE AND 12 BELOW.**

12 REMOVE EXISTING EIFS CLADDING AND MDO BOARD SUBSTRUCTURE AT PIER. REMOVE ELASTOMERIC COATING FROM EXPOSED CONCRETE PIER BASE. REMOVE VENTED ARCADE SOFFIT/CEILING AS NEEDED TO CONSTRUCT NEW PIER. INSTALL NEW METAL PIER FRAMING, GLASS MAT FACED GYPSUM SHEATHING , AND WRB OVER SHEATHING. CLEAN/PRIME ARCADE SLAB AT PERIMETER OF PIER AND INSTALL NEW PRE-FINISHED METAL FLASHING SET AGAINST SLAB IN CONTINUOUS SEALANT AND SECURE TO PIER FRAMING THROUGH SHEATHING. LAP WRB OVER VERTICAL LEG OF METAL FLASHING. INSTALL NEW EIFS CLADDING INCORPORATING HEAVY-WEIGHT MESH REINFORCING AT PIER. REINSTALL VENTED ARCADE SOFFIT/CEILING. MODIFY TO ACCOMMODATE PROFILE OF NEW PIER. **SEE DETAILS 1/RA-11 & 1/RA-12. COORDINATE WITH CONSTRUCTION REPAIR ITEM NO. 11 ABOVE.**

13 REMOVE EXISTING METAL FLASHING/COPING AND SEALANT TO EXPOSE EXISTING METAL WALL PANEL BASE FLASHING/COPING AT TOP OF EXISTING CMU WALL. CLEAN AND PRIME BASE FLASHING/COPING TO RECEIVE NEW SA FLASHING MEMBRANE. CUT EXISTING METAL COUNTERFLASHING AT RAKE BETWEEN STANDING SEAM METAL ROOF AND WALL PANELS AND BEND OUT TO PERMIT INSTALLATION OF SA FLASHING MEMBRANE. INSTALL NEW SA BUTYL-BASED FLASHING MEMBRANE OVER EXISTING SUBSTRUCTURE AT WALL PANEL/ROOF/BASE FLASHING-COPING INTERSECTION. BEND METAL RAKE COUNTERFLASHING BACK IN PLACE. SEAL ALL EDGES IN SA FLASHING. INSTALL NEW 2-PIECE PRE-FINISHED METAL FLASHING/COPING OVER SA FLASHING AND BENEATH EXISTING STANDING SEAM ROOF. SECURE IN PLACE WITH S.S. PAN HEAD SCREWS AS NEEDED. **SEE DETAIL 1/RA-15.**

14 CUT HOLE IN EXISTING STANDING SEAM METAL FASCIA/MANSARD ROOF AND SUBSTRUCTRE AS NECESSARY TO INSTALL A NEW METAL JUNCTION BOX. TERMINATE EXISTING WIRING IN JUNCTION BOX AND CAP WIRING. INSTALL NEW METAL COVER PLATE WITH NEOPRENE GASKET OVER JUNCTION BOX AND EDGES OF EXISTING METAL ROOF PANEL. FINISH COVER PLATE TO MATCH EXISTING METAL ROOF. TYPICAL AT ALL PENETRATION OCCURANCES.

15 REMOVE COATING FROM EXISTING MASONRY PIERS USING GEL COATING REMOVER SPECIFICALLY FORMULATED TO REMOVE HIGH-STRENGTH COATINGS AND OF NUETRAL PH SO AS NOT TO REQUIRE NUETRALIZING WASH AFTER USE. TUCK POINT EXPOSED MORTAR JOINTS AS NEEDED.

16 REMOVE EXISTING STANDING SEAM METAL FASCIA/MANSARD ROOF PANELS. REMOVE EXISTING SURFACE MOUNTED LIGHT FIXTURES AT ARCADE SOFFIT/CEILING. REMOVE SIGNAGE. REMOVE EXISTING METAL SOFFIT/CEILING PANELS. REMOVE EXISTING ROOF UNDERLAYMENT, INSPECT EXISTING ROOF SHEATHING AND FRAMING AND REPAIR AS NEEDED. INSTALL NEW ROOF UNDERLAYMENT AND NEW PRE-FINISHED STANDING SEAM METAL ROOF IN COLOR SELECTED BY OWNER OVER EXISTING SUBSTRUCTURE. INTEGRATE NEW METAL ROOF WITH EXISTING THERMOPLASTIC ROOF SYSTEM IN SUCH A MANNER AS TO MAINTAIN THE CURRENT WARRANTY IN FULL EFFECT. INSTALL NEW

**HACC – GETTYSBURG CAMPUS**

PREFINISHED METAL SOFFIT/CEILING PANELS IN COLOR SELECTED BY OWNER PERPENDICULAR TO THE LONG AXIS OF THE ARCADE. MODIFY EXISTING CEILING FURRING AS NECESSARY TO RECEIVE NEW PANELS. INSTALL NEW SURFACE MOUNTED HEAVY DUTY VANDAL RESISTANT FLUORESCENT LUMINAIRE SIMILAR IN SIZE AND LENGTH TO EXISTING LIGHT FIXTURES. REINSTALL SIGNAGE AS DIRECTED BY OWNER. *SEE DETAILS 1/RA-16; and 1, 2 & 3/RA-17. COORDINATE WITH CONSTRUCTION REPAIR ITEM NOS. 11, 12, AND 13 ABOVE. THIS CONSTRUCTION REPAIR ITEM IS AN “ADD ALTERNATE”.*

LEGEND

CONSTRUCTION REPAIR ITEM #



PART. ELEV.-W. CNTR./ARCADE "A"  
SCALE: 1/8" = 1'-0"

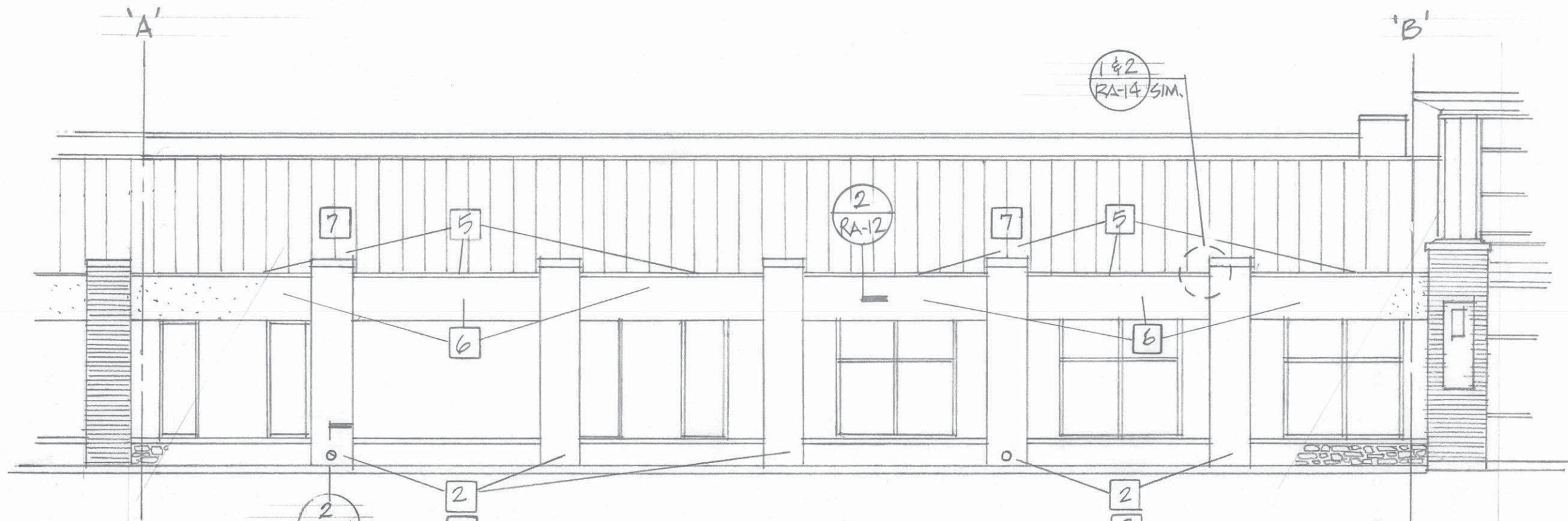
PART. ROOF PLAN - WELCOME CNTR./ARCADE "A"  
SCALE: 1/8" = 1'-0"

PROFESSIONAL CERTIFICATION  
ROBERT W. DAVIDSON, AIA  
DAVIDSON & ASSOCIATES  
ARCHITECTS - CONSTRUCTION ANALYSTS  
8120 WOODMONT AVE., SUITE 450, BETHESDA, MARYLAND 20814  
PHONE: (301) 654-2521 FAX: (301) 675-5101 WWW.DAVIDSONARCHITECTS.COM

HACC-GETTYSBURG CAMPUS  
FACADE REPAIRS  
TITLE ELEVATIONS  
SCALE 1/8" = 1'-0"

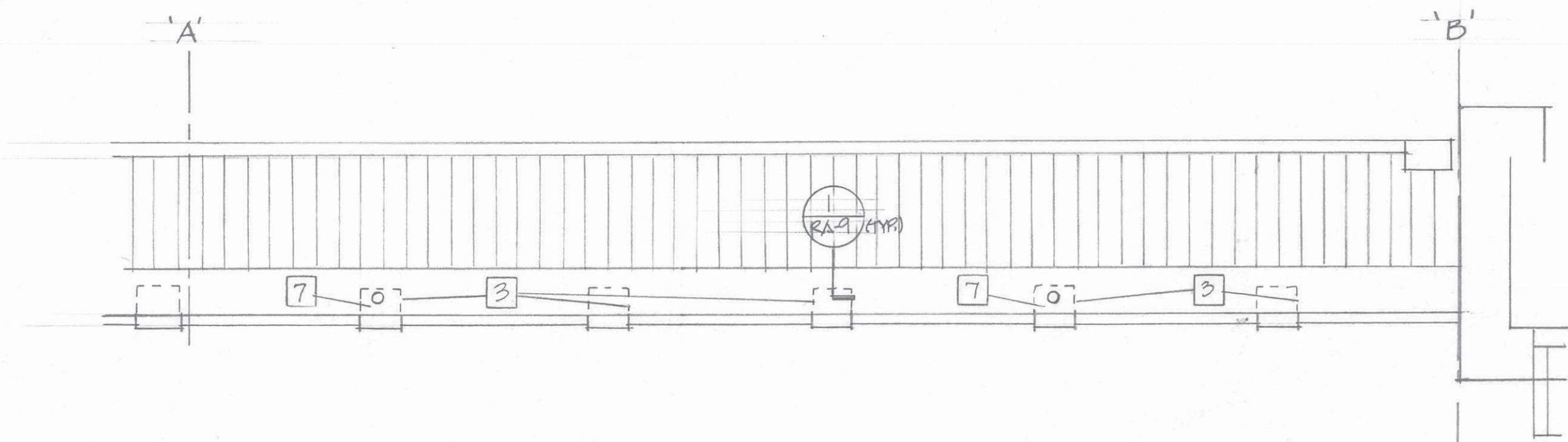
PROJECT NO. R2014.024  
DRAWN BY:  
DATE: 8-22-14  
REVISIONS:

SHEET:  
RA-1



PARTIAL ELEVATION - ARCADE 'A'  
SCALE: 1/8" = 1'-0"

1  
RA-2



PARTIAL ROOF PLAN - ARCADE 'A'  
SCALE: 1/8" = 1'-0"

2  
RA-2

PROFESSIONAL CERTIFICATION

ROBERT W. DAVIDSON, AIA

DAVIDSON & ASSOCIATES  
ARCHITECTS - CONSTRUCTION ANALYSTS  
8120 WOODMONT AVE., SUITE 450, BETHESDA, MARYLAND 20814  
PHONE: (301) 656-2324 FAX: (301) 656-5299 WWW.DAVIDSONARCHITECTS.COM

HACC-GETTYSBURG CAMPUS  
FACADE REPAIRS

TITLE  
ELEVATION

SCALE: 1/8" = 1'-0"

PROJECT NO.  
R2014-024

DRAWN BY:

DATE  
8-22-14

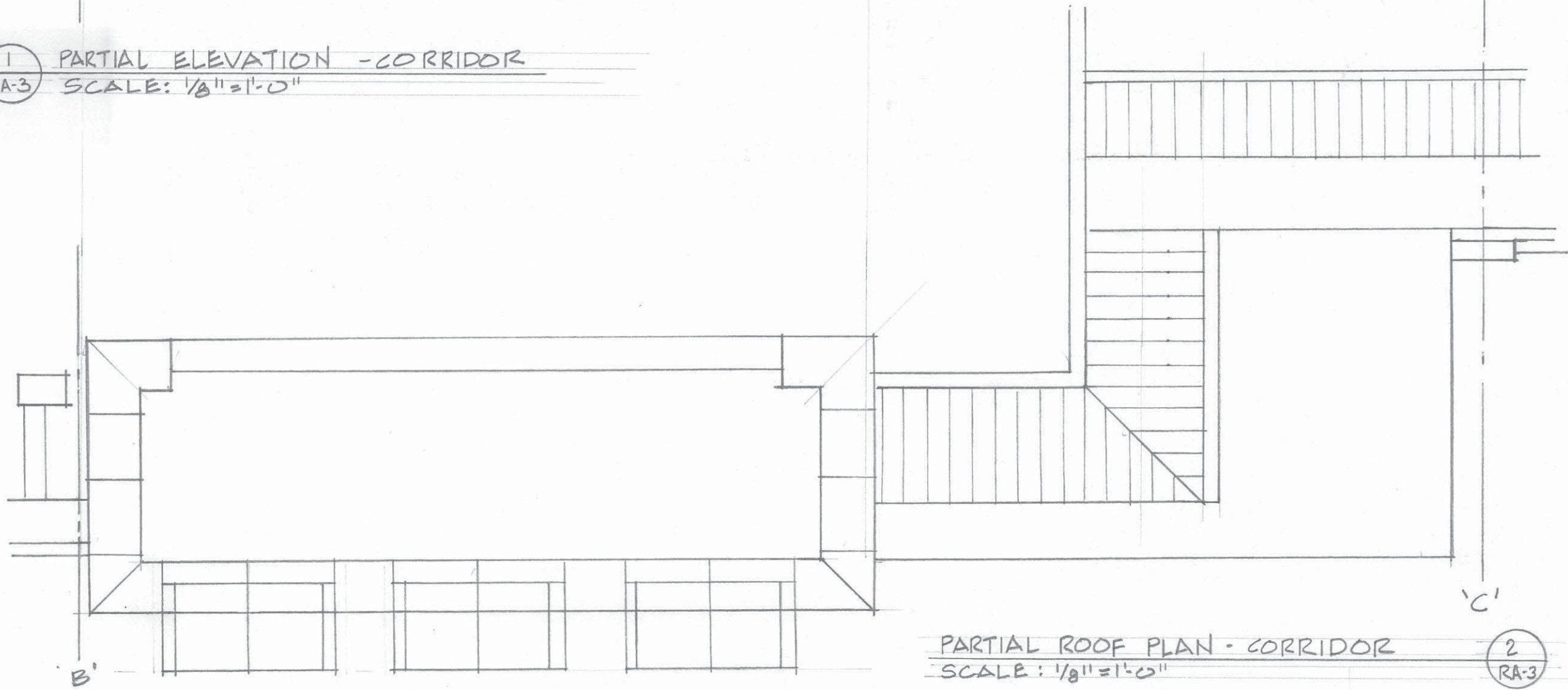
REVISIONS:

SHEET:  
RA-2

© Davidson & Associates, Inc. All rights reserved. No reproduction or distribution without the written permission of Davidson & Associates, Inc.



1 PARTIAL ELEVATION - CORRIDOR  
 RA-3 SCALE: 1/8" = 1'-0"



PARTIAL ROOF PLAN - CORRIDOR  
 SCALE: 1/8" = 1'-0" 2 RA-3

PROFESSIONAL CERTIFICATION

ROBERT W. DAVIDSON, AIA

DAVIDSON & ASSOCIATES  
 ARCHITECTS - CONSTRUCTION ANALYSTS  
 8120 WOODMONT AVE., SUITE 450, BETHESDA, MARYLAND 20814  
 PHONE (301) 654-2524 FAX (301) 654-2594  
 WWW.DAVIDSONARCHITECTS.COM

HACC-GETTYSBURG CAMPUS  
 FACADE REPAIRS  
 TITLE ELEVATION  
 SCALE: 1/8" = 1'-0"

PROJECT NO:  
 K2014.024

DRAWN BY:

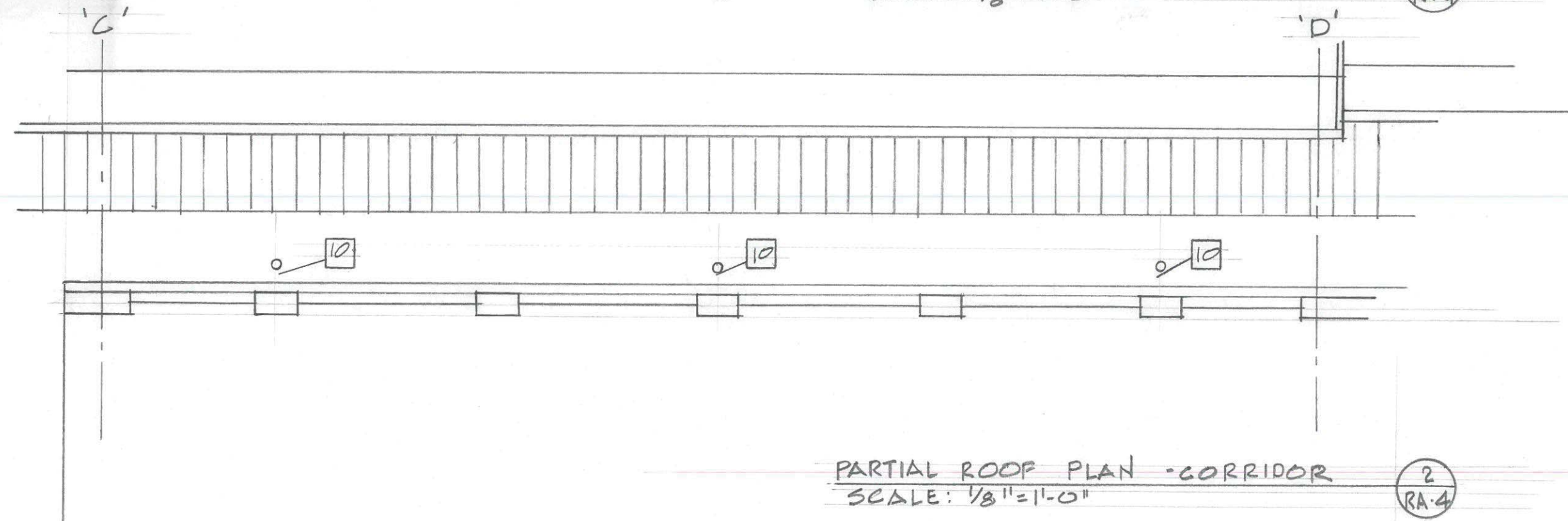
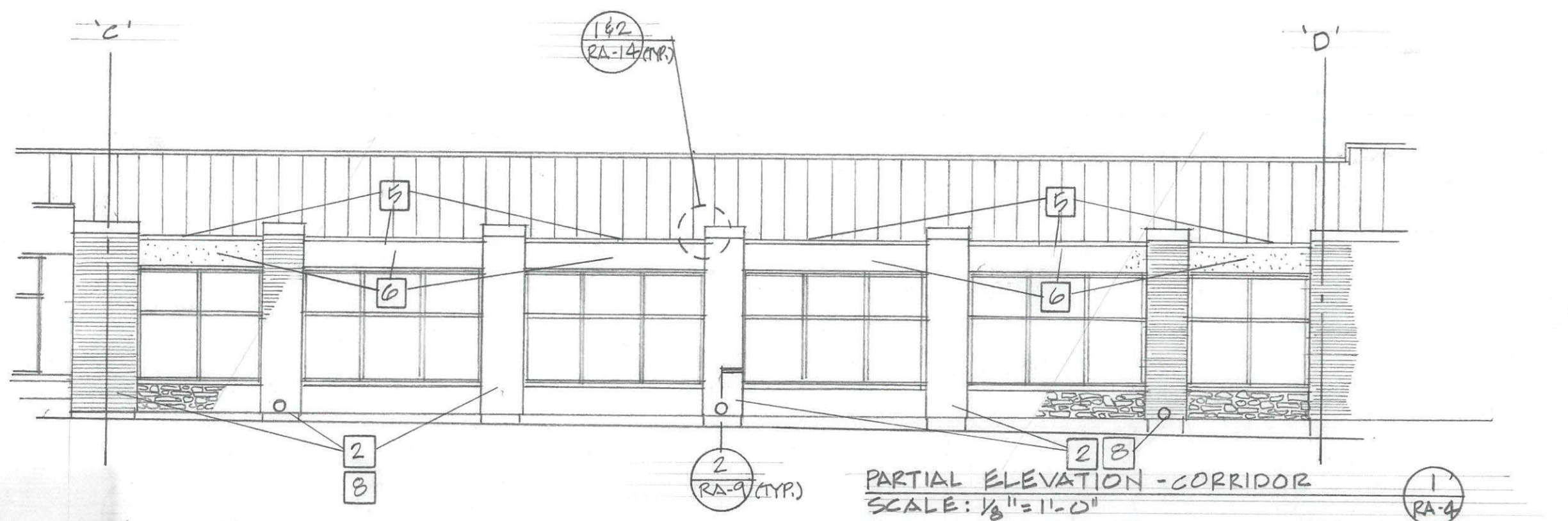
DATE: 8-22-14

REVISIONS:

SHEET:

RA-3

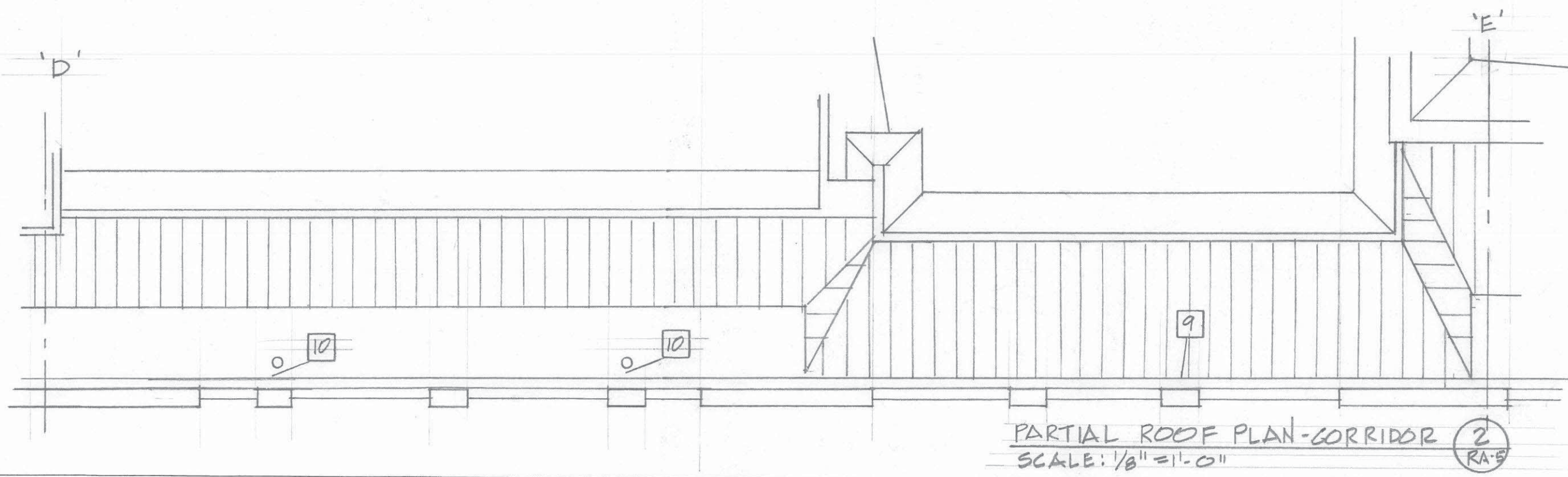
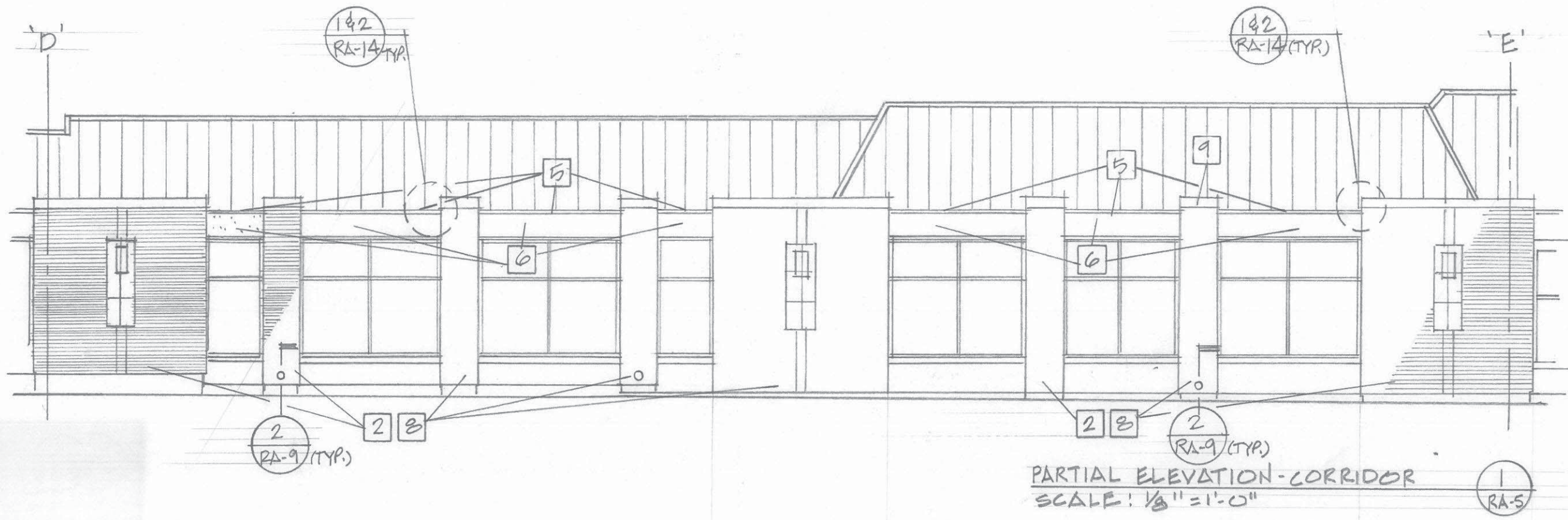
© Davidson & Associates, Inc. All rights reserved. No part of this document may be reproduced without written permission from Davidson & Associates, Inc.



1  
RA-4

2  
RA-4





PROFESSIONAL CERTIFICATION

ROBERT W. DAVIDSON, AIA

DAVIDSON & ASSOCIATES  
 ARCHITECTS - CONSTRUCTION ANALYSTS  
 8120 WOODMONT AVE., SUITE 450, BETHESDA, MARYLAND, 20814  
 PHONE: (301) 658-5242 FAX: (301) 658-5391 WWW.DAVIDSONARCHITECTS.COM

HACC-GETTYSBURG CAMPUS  
 FACADE REPAIRS

TITLE ELEVATIONS

PROJECT NO. R2014.024

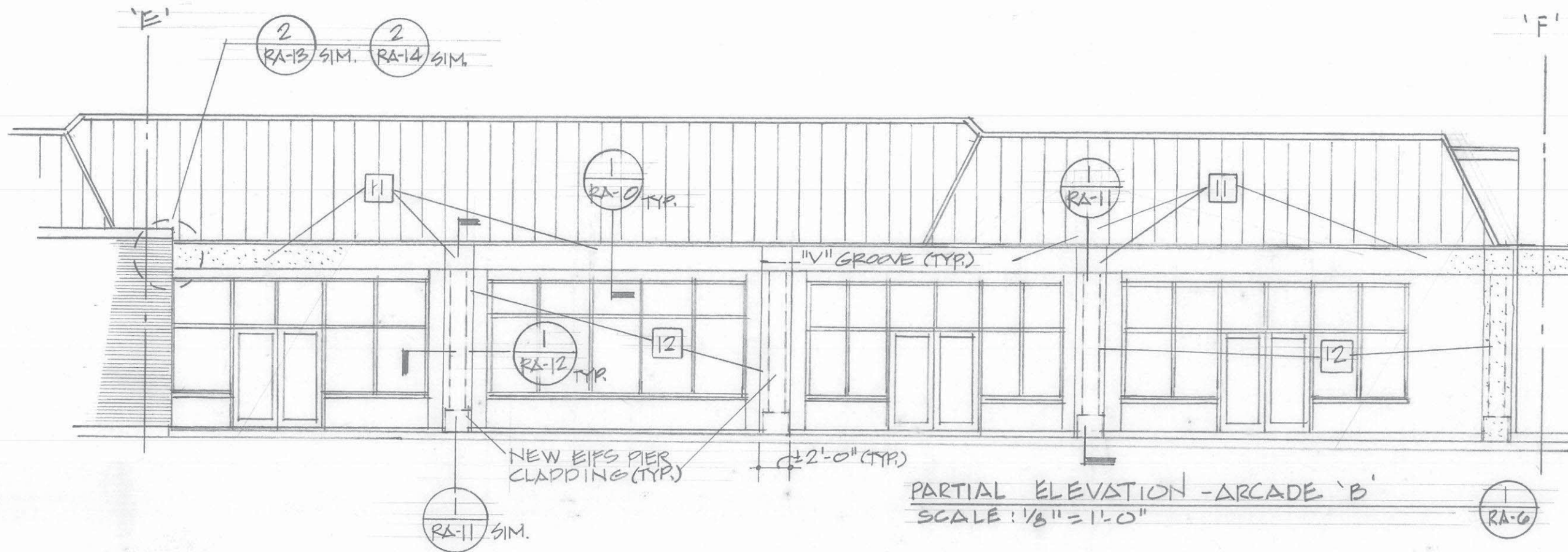
DRAWN BY:

DATE: 8-22-14

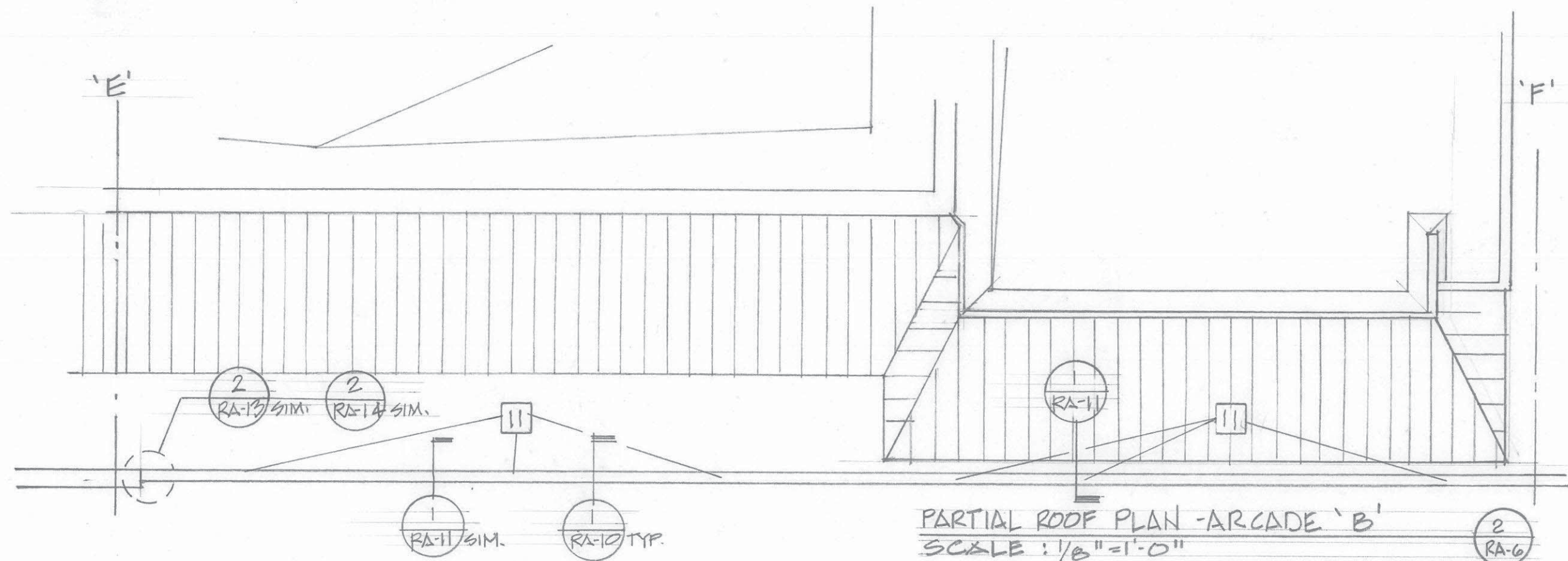
REVISIONS:

SHEET: RA-5

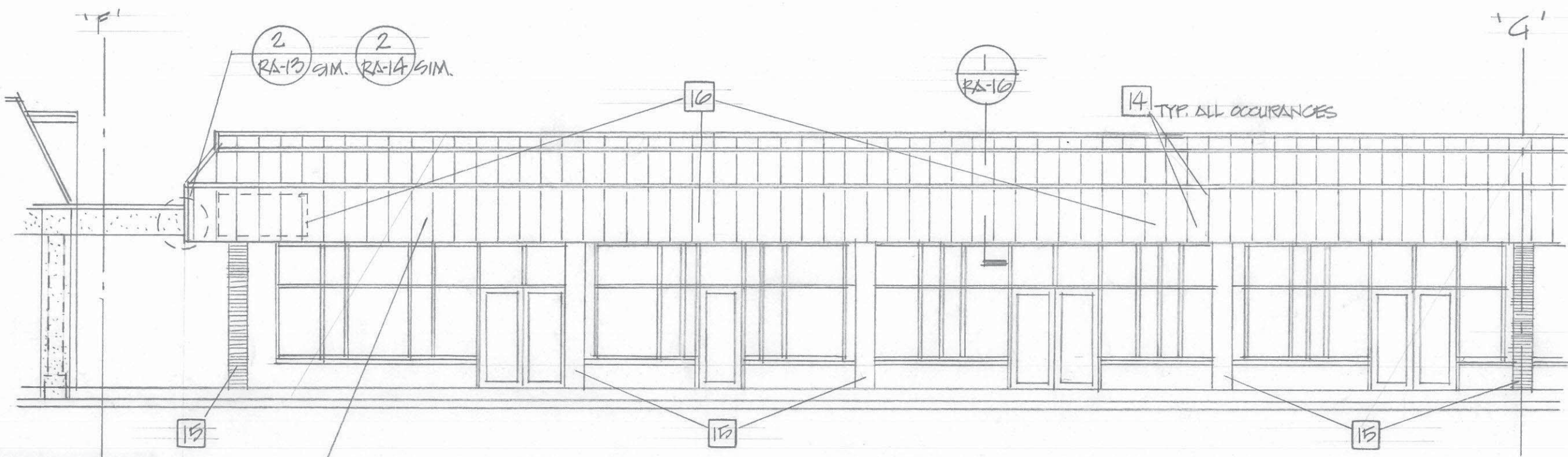
© Davidson & Associates, Inc. All rights reserved. No reproduction or distribution without the written permission of Davidson & Associates, Inc.



PARTIAL ELEVATION - ARCADE 'B'  
SCALE: 1/8" = 1'-0"



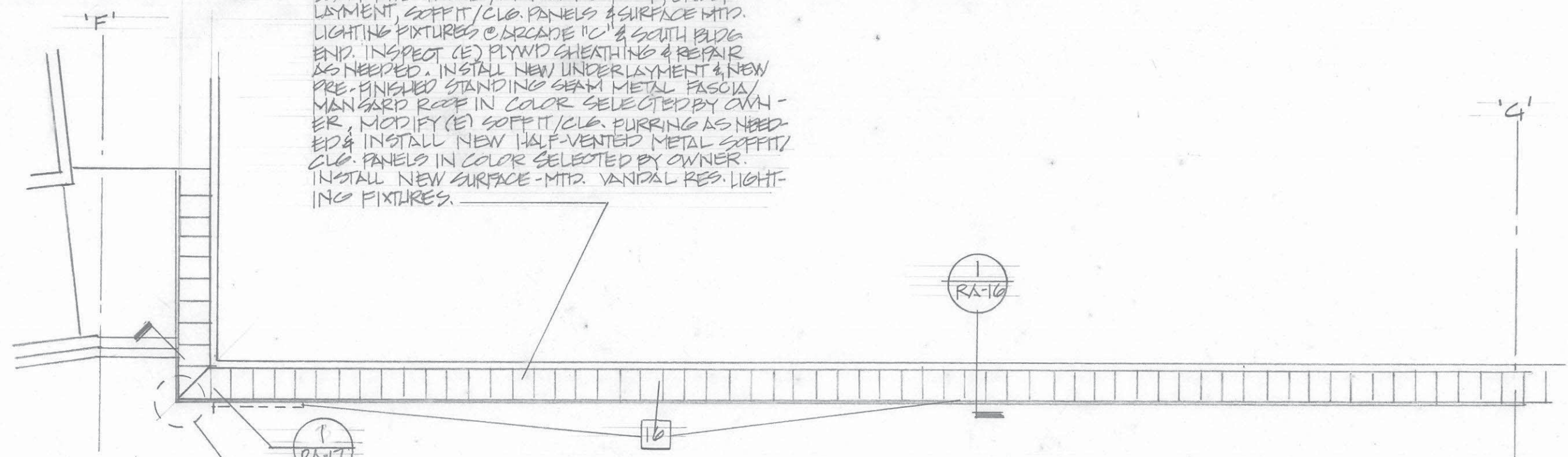
PARTIAL ROOF PLAN - ARCADE 'B'  
SCALE: 1/8" = 1'-0"



PARTIAL ELEVATION-ARCADE 'B' & 'C'  
SCALE: 1/8" = 1'-0"

1  
RA-7

ALTERNATE NO. 1: REMOVE (E) STANDING SEAM MTL. FASCIA/MANSARD ROOF, UNDERLAYMENT, SOFFIT/CLG. PANELS & SURFACE MTR. LIGHTING FIXTURES @ ARCADE 'C' & SOUTH BLDG END. INSPECT (E) PLYWD SHEATHING & REPAIR AS NEEDED. INSTALL NEW UNDERLAYMENT & NEW PRE-FINISHED STANDING SEAM METAL FASCIA/MANSARD ROOF IN COLOR SELECTED BY OWNER. MODIFY (E) SOFFIT/CLG. FURRING AS NEEDED & INSTALL NEW HALF-VENTED METAL SOFFIT/CLG. PANELS IN COLOR SELECTED BY OWNER. INSTALL NEW SURFACE-MTR. VANDAL RES. LIGHTING FIXTURES.



PARTIAL ROOF PLAN-ARCADE 'B' & 'C'  
SCALE: 1/8" = 1'-0"

2  
RA-7

PROFESSIONAL CERTIFICATION

ROBERT W. DAVIDSON, AIA

DAVIDSON & ASSOCIATES  
ARCHITECTS - CONSTRUCTION ANALYSTS  
8120 WOODMONT AVE., SUITE 450, BETHESDA, MARYLAND 20814  
PHONE (301) 652-6231 FAX (301) 647-6201 WWW.DAVIDSONARCHITECTS.COM

HACC-GETTYSBURG CAMPUS  
FACADE REPAIRS

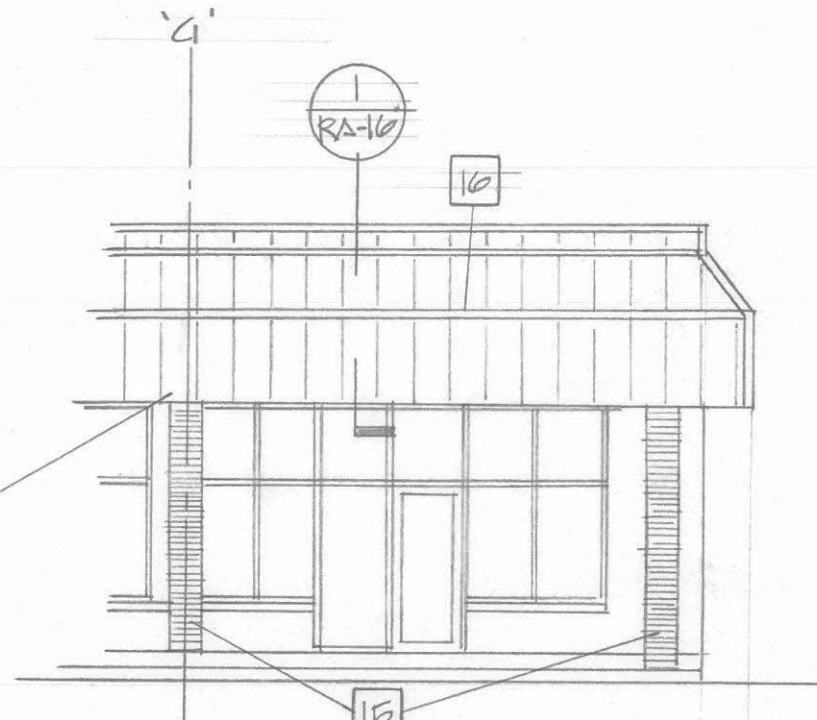
TITLE ELEVATIONS

SCALE: 1/8" = 1'-0"

PROJECT NO: R2014.024  
DRAWN BY:  
DATE: 8-22-14  
REVISIONS:

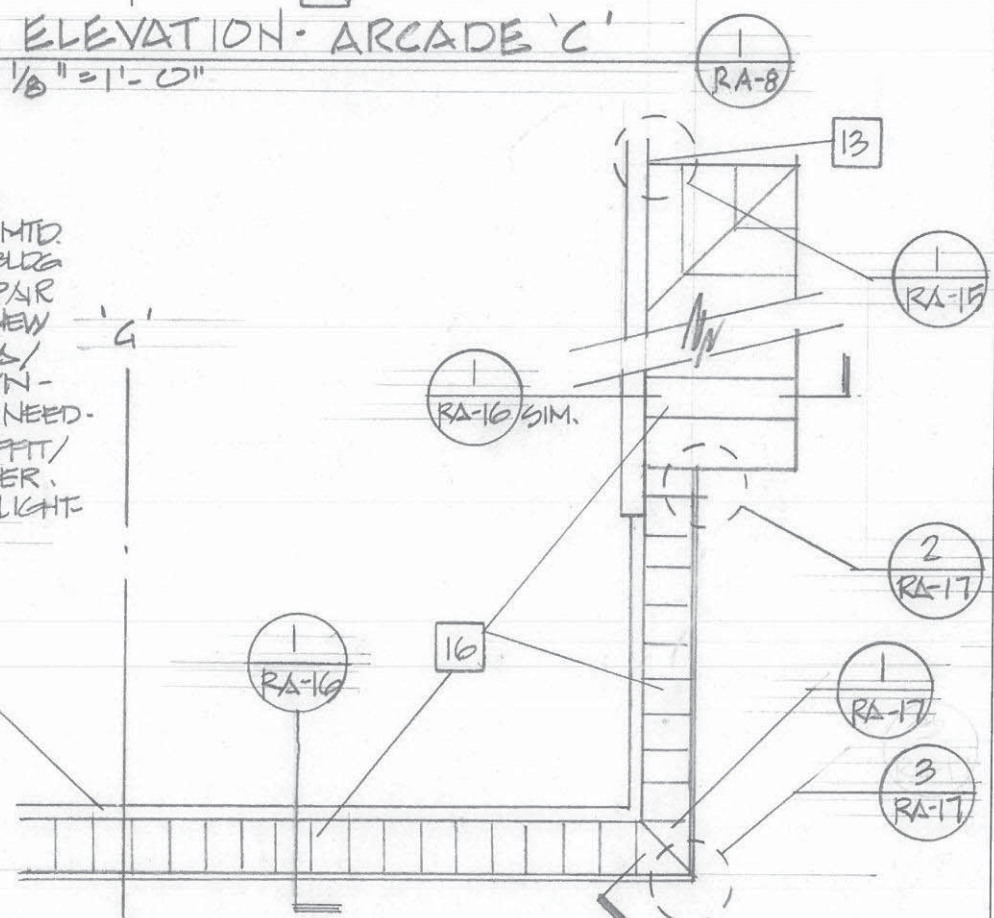
SHEET:  
RA-7

© Davidson & Associates, Inc. All rights reserved. No reproduction or distribution without the written permission of Davidson & Associates, Inc.



PARTIAL ELEVATION - ARCADE 'C'  
SCALE: 1/8" = 1'-0"

ALTERNATE NO. 1: REMOVE (E) STANDING SEAM MET. FASCIA/MANSARD ROOF, UNDERLAYMENT, SOFFIT/CLG. PANELS & SURFACE MTD. LIGHTING FIXTURES @ ARCADE 'C' & SOUTH PLUG END. INSPECT (E) PLYWD. SHEATHING & REPAIR AS NEEDED. INSTALL NEW UNDERLAYMENT & NEW PRE-FINISHED STANDING SEAM MET. FASCIA/MANSARD ROOF IN COLOR SELECTED BY OWNER. MODIFY (E) SOFFIT/CLG. FURRING AS NEEDED & INSTALL NEW HALF-VENTED METAL SOFFIT/CLG. PANELS IN COLOR SELECTED BY OWNER. INSTALL NEW SURFACE MTD. VANDAL RES. LIGHTING FIXTURES.



PARTIAL ROOF PLAN - ARCADE 'C'  
SCALE: 1/8" = 1'-0"

PROFESSIONAL CERTIFICATION

ROBERT W. DAVIDSON, AIA

DAVIDSON & ASSOCIATES  
ARCHITECTS - CONSTRUCTION ANALYSTS  
8120 WOODMONT AVE., SUITE 450, BETHESDA, MARYLAND 20814  
PHONE: (301) 224-2424 FAX: (301) 224-5094 WWW.DAVIDSONARCHITECTS.COM

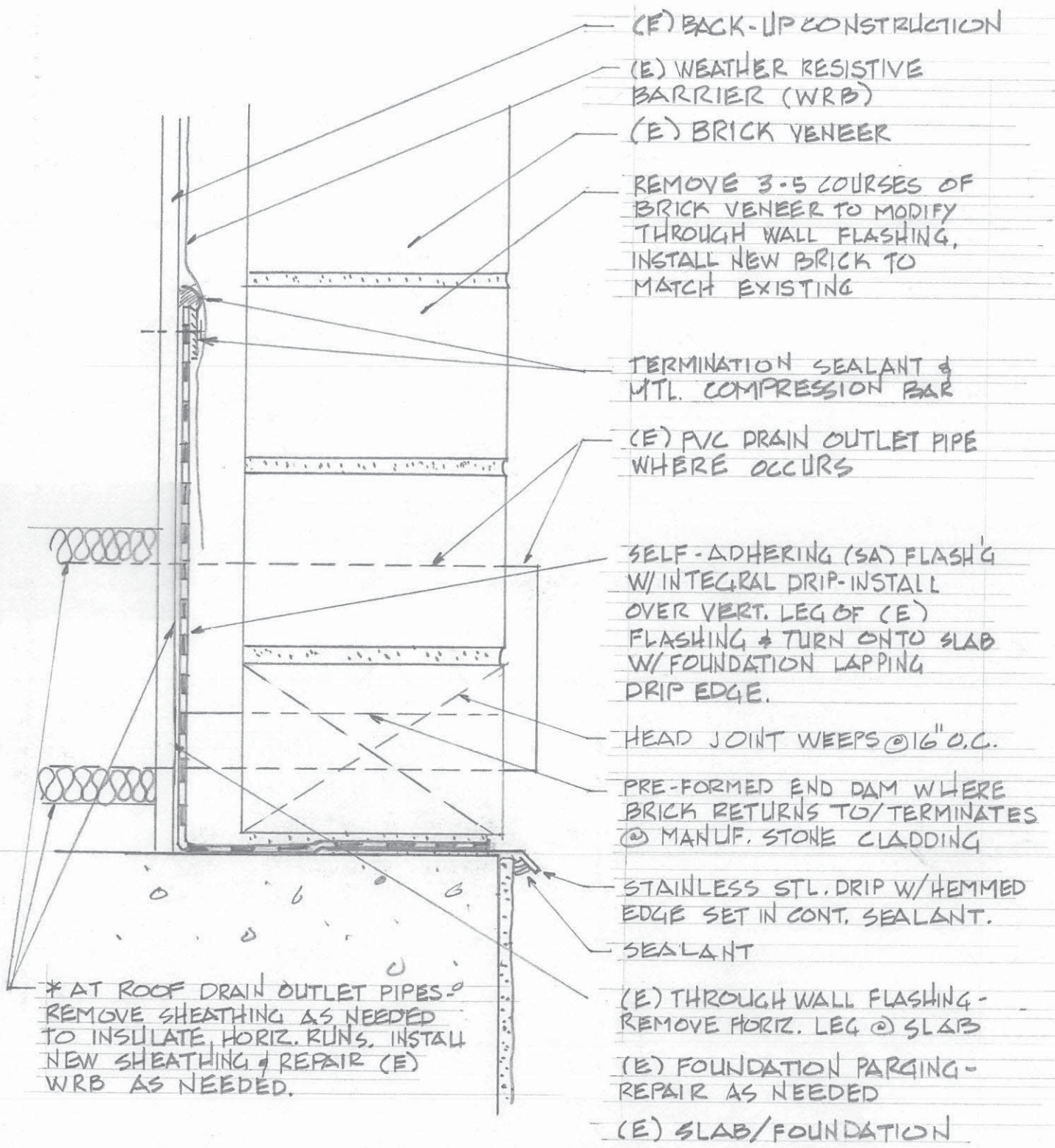
HACC - GETTYSBURG CAMPUS  
FACADE REPAIRS

TITLE  
ELEVATION

SCALE: 1/8" = 1'-0"

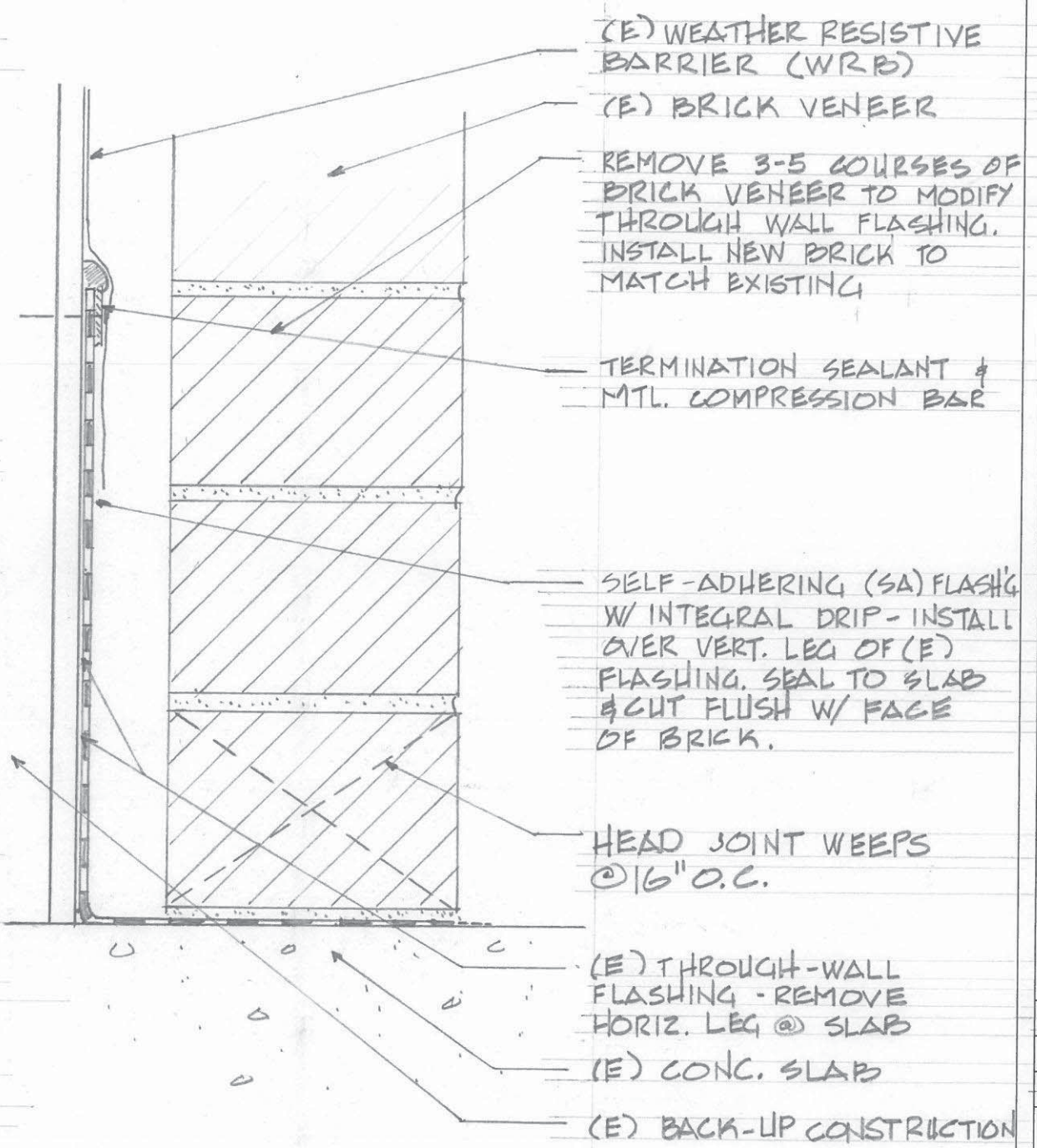
PROJECT NO: R2014.024  
DRAWN BY:  
DATE: 8-22-14  
REVISIONS:  
SHEET:  
RA-8

© Davidson & Associates, Inc. All rights reserved. No part of this document may be reproduced without written permission.



BRICK PIER @ FOUNDATION / SLAB  
SCALE: 6" = 1'-0"

2  
RA-9



BRICK PIER @ SLAB  
SCALE: 6" = 1'-0"

1  
RA-9

\* AT ROOF DRAIN OUTLET PIPES - REMOVE SHEATHING AS NEEDED TO INSULATE HORIZ. RUNS, INSTALL NEW SHEATHING & REPAIR (E) WRB AS NEEDED.

NEW PRE-FINISHED MTL COPING,  
MATCH COLOR OF (E) STANDING  
SEAM MTL. MANSARD ROOF  
(SEE BELOW FOR NOTES.)

(E) STANDING SEAM MTL. ROOF  
MEMBRANE & GUTTER LINER

(E) MANSARD ROOF STRUCTURE  
(E) STEEL FRAMING

(E) WOOD STRUCTURE FOR ORIG.  
BUILT-IN GUTTER/ORIG SOFFIT

(E) CEILING PANELS - REMOVE  
AS NEEDED TO INSTALL  
NEW EIFS FASCIA/SOFFIT -  
THEN RE-INSTALL

NEW EIFS FASCIA/SOFFIT  
W/ FULLY BACK-WRAPPED  
END TERMINATIONS.

NEW EIFS PIER BEYOND

2 1/2" GALV. MTL. FRAMING - ANCHOR  
TO (E) BUILT-IN GUTTER  
STRUCTURE. COPE VERT. FRAMING  
MEMBERS TO MEET SLOPE  
OF (E) WOOD FASCIA.

NEW - CONT. PVC  
SOFFIT VENT

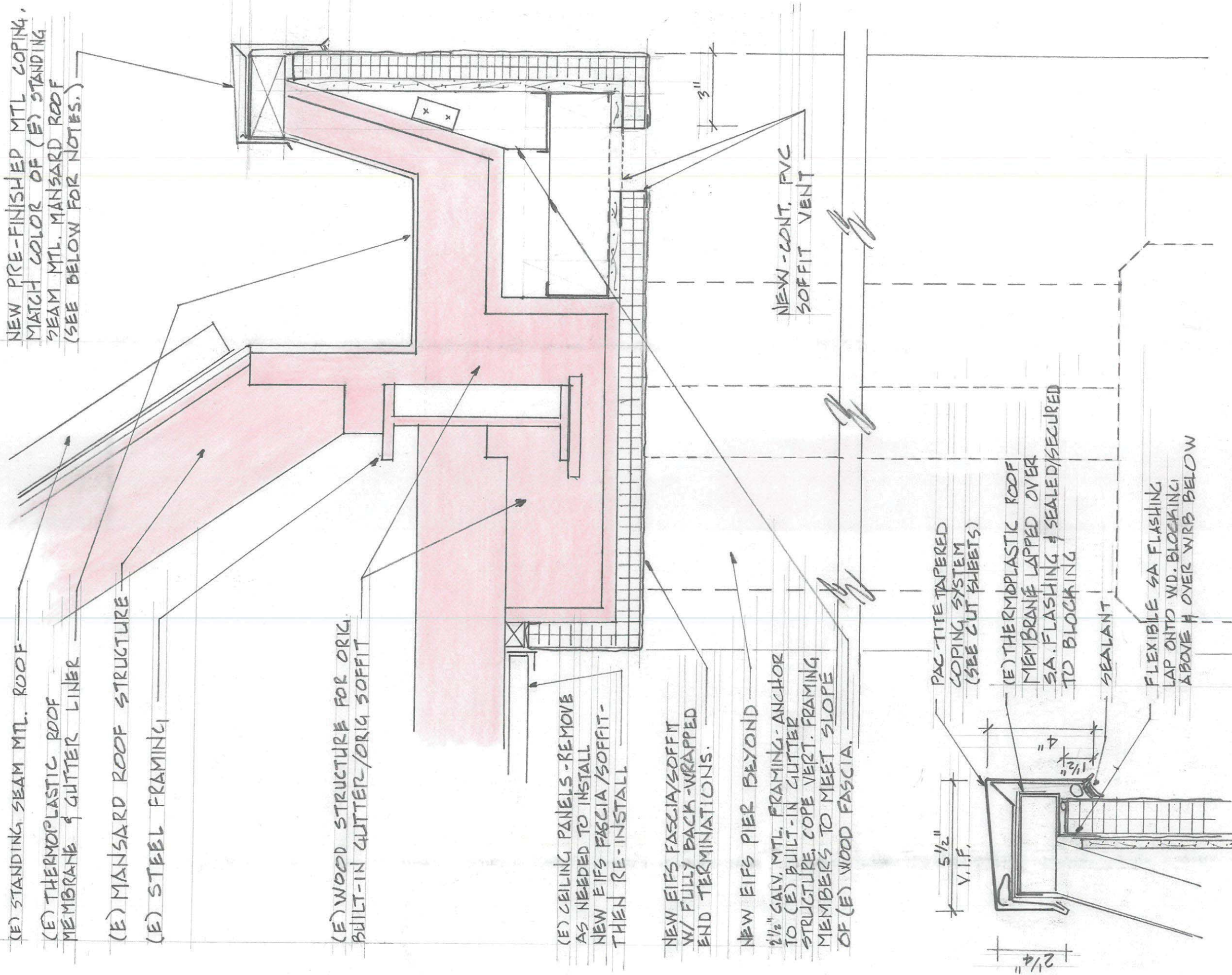
5 1/2"  
V.I.F.

PAC-TITE TAPERED  
COPING SYSTEM  
(SEE CUT SHEETS)

(E) THERMOPLASTIC ROOF  
MEMBRANE LAPPED OVER  
S.A. FLASHING & SEALED/SECURED  
TO BLOCKING

SEALANT

FLEXIBLE SA FLASHING  
LAP ONTO WD. BLOCKING  
ABOVE & OVER WRB BELOW



NEW EIFS / SOFFIT @ ARCADE B  
SCALE: 3" = 1'-0"

1  
RA-10

PROFESSIONAL CERTIFICATION	
ROBERT W. DAVIDSON, AIA	
DAVIDSON & ASSOCIATES ARCHITECTS - CONSTRUCTION ANALYSTS 8120 WOODMONT AVE., SUITE 450, BETHESDA, MARYLAND 20814 PHONE: (301) 452-2211 FAX: (301) 452-5986 WWW.DAVIDSONARCHITECTS.COM	
HACC-GETTYSBURG CAMPUS FACADE REPAIRS	
TITLE DETAILS	
PROJECT NO. R204.024	SCALE:
DRAWN BY:	
DATE: 8.22.14	
REVISIONS:	
SHEET: RA-10	

SEE DETAIL 1/RA-10 FOR  
ADDITIONAL NOTES

1/2" GALV. MTL. FRAMING - CORE  
TO (E) WD. FASCIA

GALV. CLIP X

5" ADJ. ALUM. DRAIN  
GUARD

3" DRAIN LINER W/ THERMOPLASTIC  
BASE & CLAD MTL. DROP SCUPPER -  
MODIFY BUILT-IN GUTTER TO RECEIVE  
LINER/DROP SCUPPER & HEAT-WELD  
BASE TO (E) GUTTER LINER MEMBRANE

NOM. 3" Ø C.I. PIPE - CONNECT TO NEW  
DRAIN / PROP SCUPPER & (E) VERTICAL  
DRAIN PIPE W/ RUBBER COUPLINGS.

REMOVE (E) COPPER SCUPPER BOX/LEADER.  
PATCH HOLE IN GUTTER STRUCTURE & REPAIR  
THERMOPLASTIC GUTTER LINER

MINERAL WOOL INSULATION

REMOVABLE PLUG  
(INSTALL ACCESS PANEL FOR  
ACCESS TO EA. PLUG)

P.T. BLOCKING FOR (E)  
CEILING PANEL WALL ANGLE

(E) CEILING PANELS -  
MODIFY TO RECEIVE  
NEW PIER

1" THICK EIFS  
(BACKWRAPPED @ TOP)

2 1/2" GALV. MTL. STUDS  
@ 12" O.C. INSTALLED FLAT  
AGAINST CONC. BASE.

(E) VERT. MTL. DRAIN PIPE

GLASS MAT FACE  
GYP. SHEATHING

2 1/2" GALV. MTL. FRAMING  
@ 12" O.C. BRACE TO  
(E) STRUCTURE

WRB LAPPED OVER MTL.  
FLASHING & STARTER TRACK

WEPPED PVC STARTER  
TRACK FOR EIFS

1" x 4" PRE-FINISHED MTL  
FLASHING W/ HEMMED  
EDGE. SET IN CONT. SEALANT/  
MASTIC AGAINST SLAB

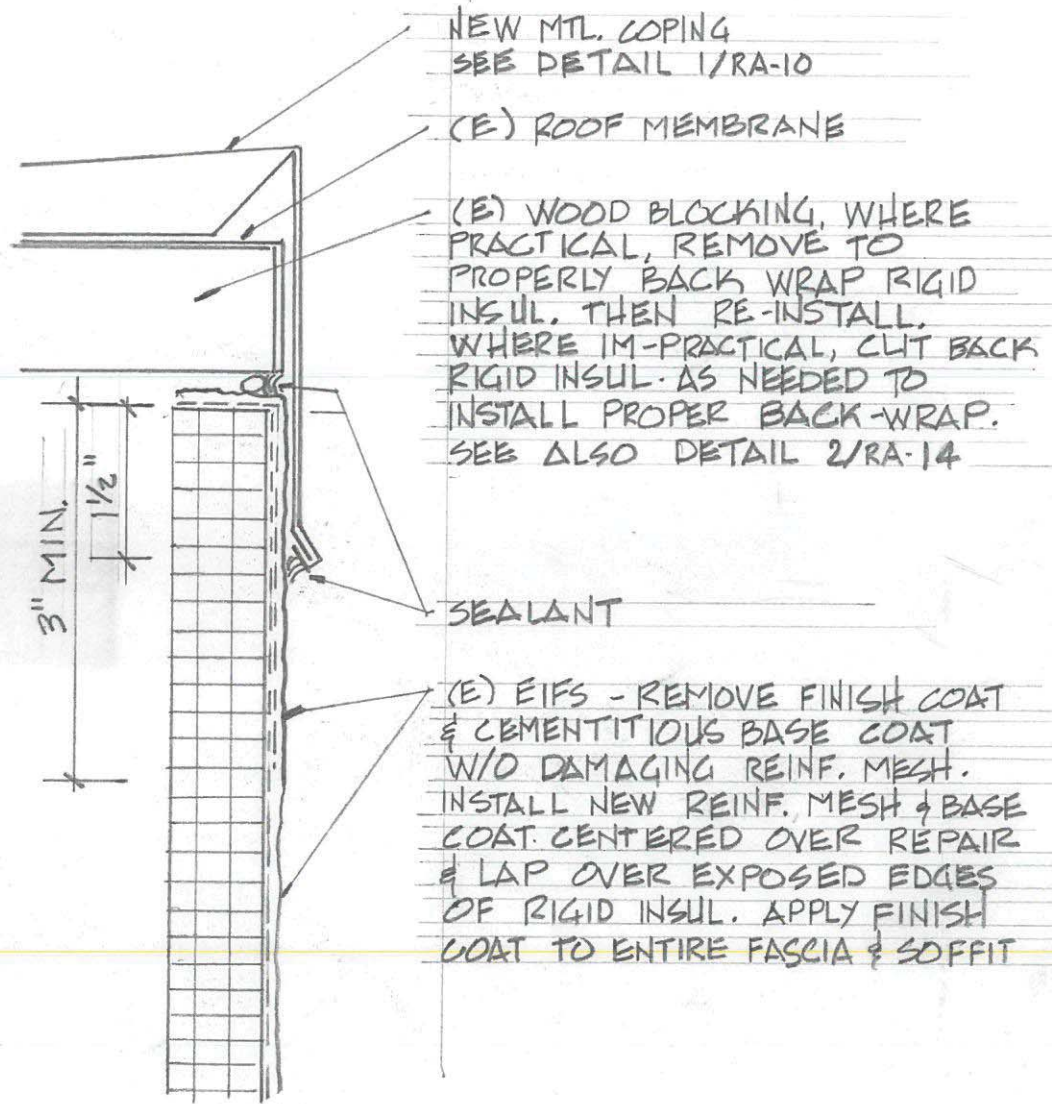
(E) CONCRETE  
ARCADE SLAB

SEALANT BETWEEN  
SHEATHING & SLAB (TYP.)

NEW ROOF DRAIN @ ARCADE B  
SCALE: 3" = 1'-0"

RA-11

PROFESSIONAL CERTIFICATION	
ROBERT W. DAVIDSON, AIA	
DAVIDSON & ASSOCIATES ARCHITECTS - CONSTRUCTION ANALYSTS 8120 WOODMONT AVE., SUITE 450, BETHESDA, MARYLAND 20814 PHONE: (301) 654-8241 FAX: (301) 652-2891 WWW.DAVIDSONARCHITECTS.COM	
HACC - GETTYSBURG CAMPUS FACADE REPAIRS	PROJECT NO: R 2014-024
TITLE DETAILS	DRAWN BY:
SCALE: 3" = 1'-0"	DATE: 8-22-14
	REVISIONS:
SHEET: RA-11	



NEW MTL. COPING  
SEE DETAIL 1/RA-10

(E) ROOF MEMBRANE

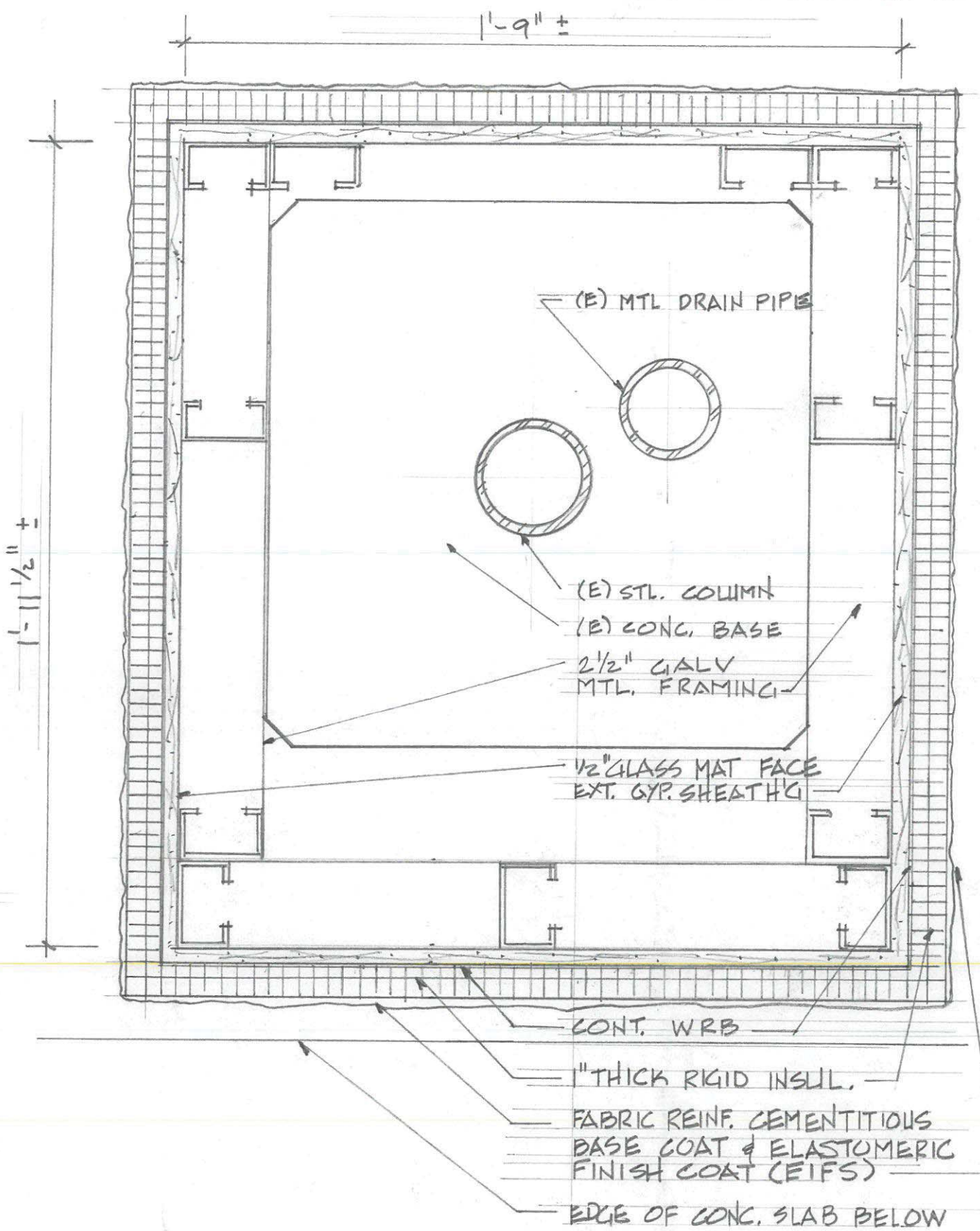
(E) WOOD BLOCKING, WHERE PRACTICAL, REMOVE TO PROPERLY BACK WRAP RIGID INSUL. THEN RE-INSTALL. WHERE IM-PRACTICAL, CUT BACK RIGID INSUL. AS NEEDED TO INSTALL PROPER BACK-WRAP. SEE ALSO DETAIL 2/RA-14

SEALANT

(E) EIFS - REMOVE FINISH COAT & CEMENTITIOUS BASE COAT W/O DAMAGING REINF. MESH. INSTALL NEW REINF. MESH & BASE COAT CENTERED OVER REPAIR & LAP OVER EXPOSED EDGES OF RIGID INSUL. APPLY FINISH COAT TO ENTIRE FASCIA & SOFFIT

CONDITION @ VERTICAL EIFS  
SCALE: NTS

2  
RA-12



(E) MTL DRAIN PIPE

(E) STL. COLUMN  
(E) CONG. BASE

2 1/2" GALV MTL. FRAMING

1/2" GLASS MAT FACE  
EXT. GYP. SHEATH'G

CONT. WRB

1" THICK RIGID INSUL.

FABRIC REINF. CEMENTITIOUS BASE COAT & ELASTOMERIC FINISH COAT (EIFS)

EDGE OF CONG. SLAB BELOW

NEW EIFS PIER @ ARCADE 'B'  
SCALE: 3"=1'-0"

1  
RA-12

PROFESSIONAL CERTIFICATION

ROBERT W. DAVIDSON, AIA

DAVIDSON & ASSOCIATES  
ARCHITECTS - CONSTRUCTION ANALYSTS  
8120 WOODMONT AVE., SUITE 450, BETHESDA, MARYLAND 20814  
PHONE: (301) 652-2424 FAX: (301) 652-2901 WWW.DAVIDSONARCHITECTS.COM

HACC-GETTYSBURG CAMPUS  
FACADE REPAIRS

TITLE DETAILS

SCALE: AS NOTED

PROJECT NO. R2014.024

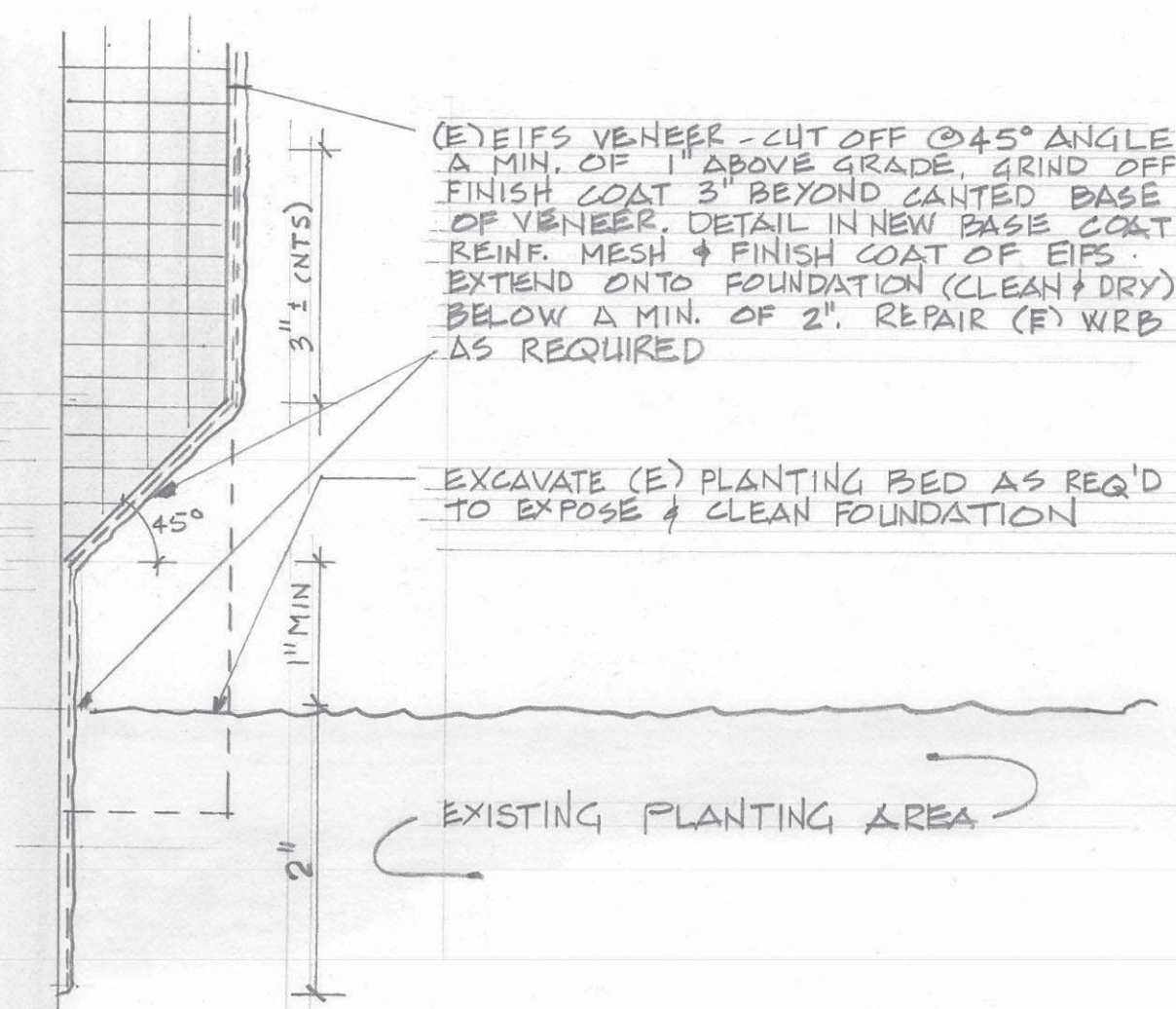
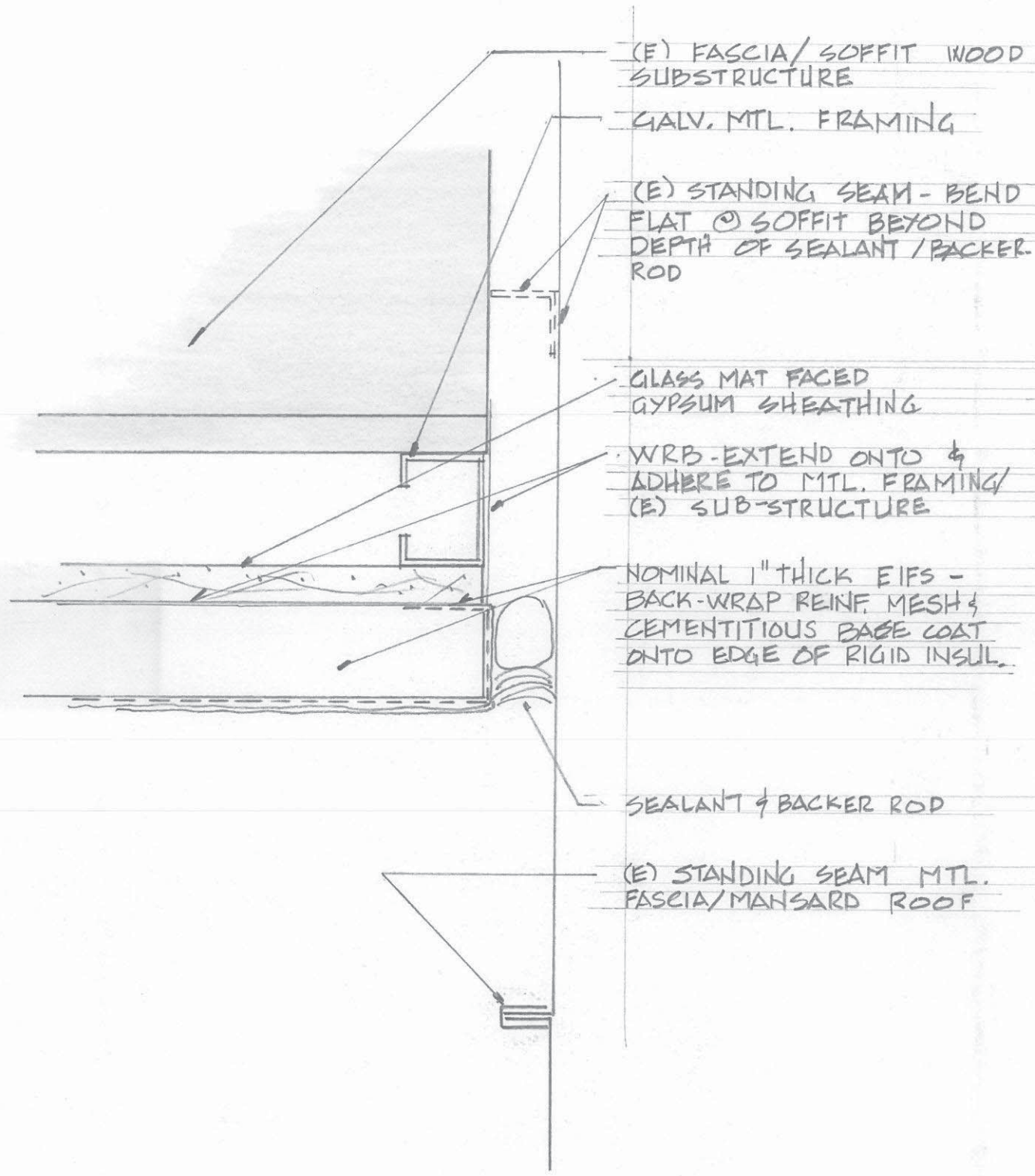
DRAWN BY:

DATE: 8-22-14

REVISIONS:

SHEET: RA-12





PLANTER RESTORATION/EIFS RE-COAT 1  
SCALE: NTS RA-13

EXPANSION JOINT @ EIFS / MTL ROOF SYSTEM 2  
SCALE: 6" = 1'-0" RA-13

(E) SMALL CAST STONE COPING

SEALANT & BACKEROD (WHERE REQ'D) BETWEEN END WALL FLASHING/SPLICE PLATE & C.S. COPING & BRICK

PRE-FINISHED MTL. END WALL FLASHING/SPLICE PLATE - MODIFY FLANGES @ FRONT & BACK AS SHOWN.

PRE-FINISHED MTL. COPING FACE DIMENSION TO MATCH EXT'G. COLOR TO MATCH EXT'G

SEALANT

CUT FRONT FLANGE & HEM BEHIND FACE OF COPING. CUT BACK FLANGE & HEM BEYOND BACK OF SMALL COPING. NO MODIFICATION REQ'D @ BACK FLANGE W/ LARGE COPING STONE.

(E) WD. BLOCKING

MATCH (E) COPING DIM. VERIFY IN FIELD (N.I.F.)

12" WIDE GALV. MTL ANCHOR CLIP @ 4'-0" O.C.

(E) EIFS - PROPERLY BACK-WRAP TOP EDGE. SEE DETAIL 1/RA-14

NEW S.A. FLASHING - EXTEND ONTO BACK-UP CONST. & BLOCKING

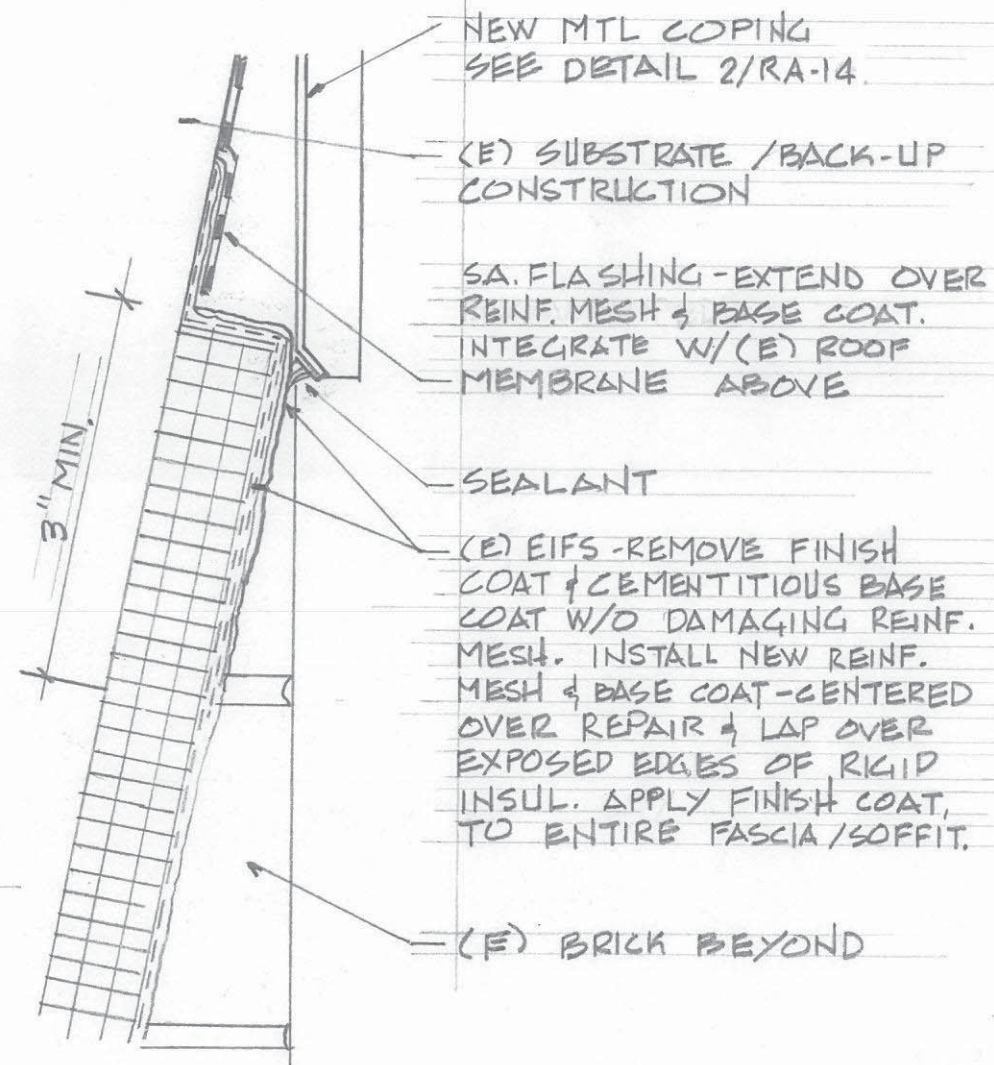
(E) THERMOPLASTIC ROOF MEMBRANE - SECURE TO BLOCKING OVER SA FLASH'G

\*REMOVE (E) MTL. COPING & CLEATS. SEAL EDGES OF (E) THERMOPLASTIC ROOFING TO BRICK PRIOR TO INSTALLING NEW COPING SYSTEM.

COPING @ END WALL/CAST STONE

SCALE: N.T.S.

2  
RA-14



CONDITION @ SLOPED EIFS

SCALE: N.T.S.

1  
RA-14

PROFESSIONAL CERTIFICATION

ROBERT W. DAVIDSON, AIA

DAVIDSON & ASSOCIATES  
ARCHITECTS - CONSTRUCTION ANALYSTS  
8120 WOODMONT AVE., SUITE 450, BETHESDA, MARYLAND 20814  
PHONE: (301) 452-6241 FAX: (301) 452-5291 WWW.DAVIDSONARCHITECTS.COM

HACC-GETTYSBURG CAMPUS  
FACADE REPAIRS

SCALE: N.T.S.

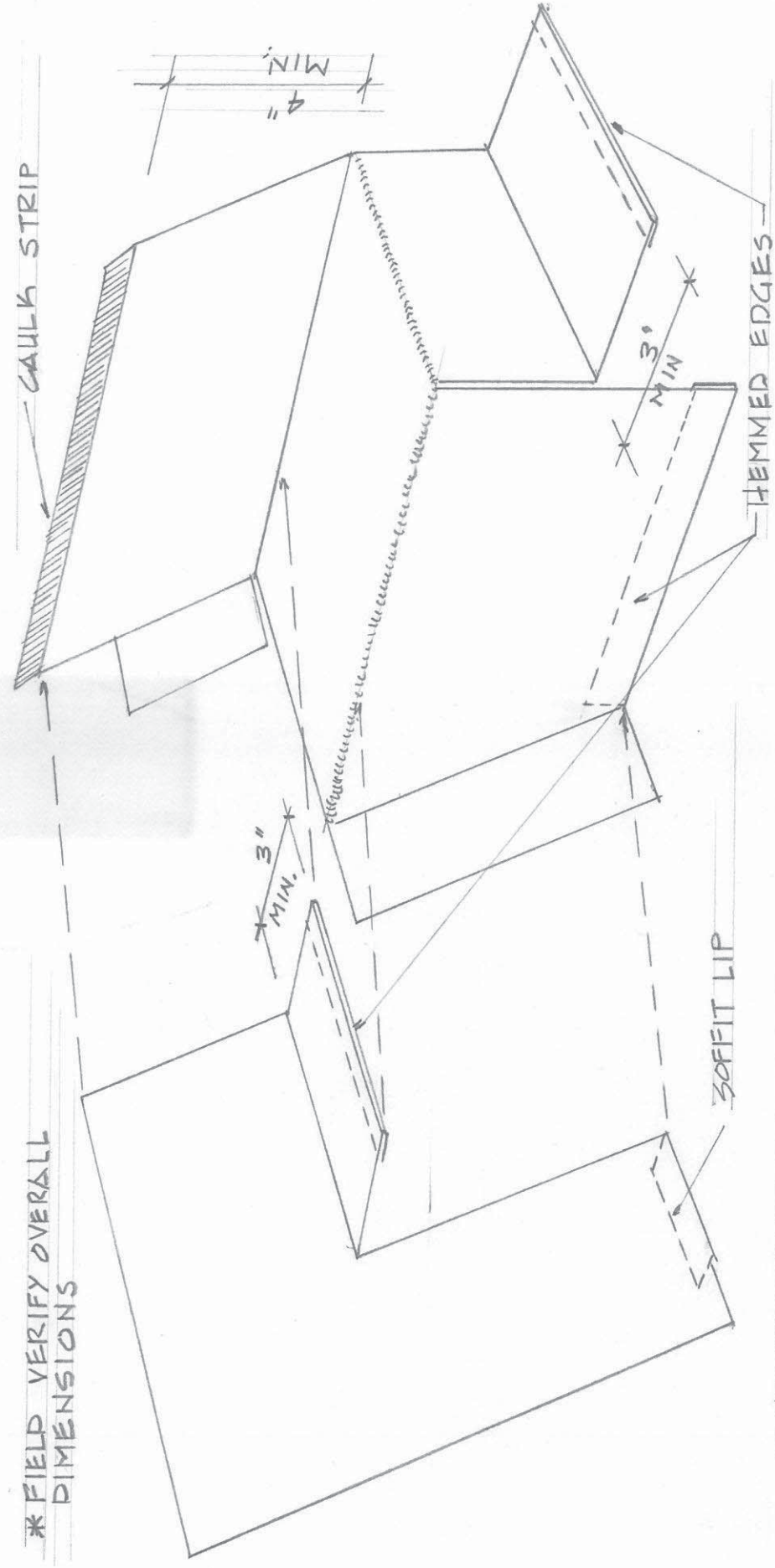
TITLE DETAILS

PROJECT NO: R2014.024  
DRAWN BY:  
DATE: 8-22-14  
REVISIONS:

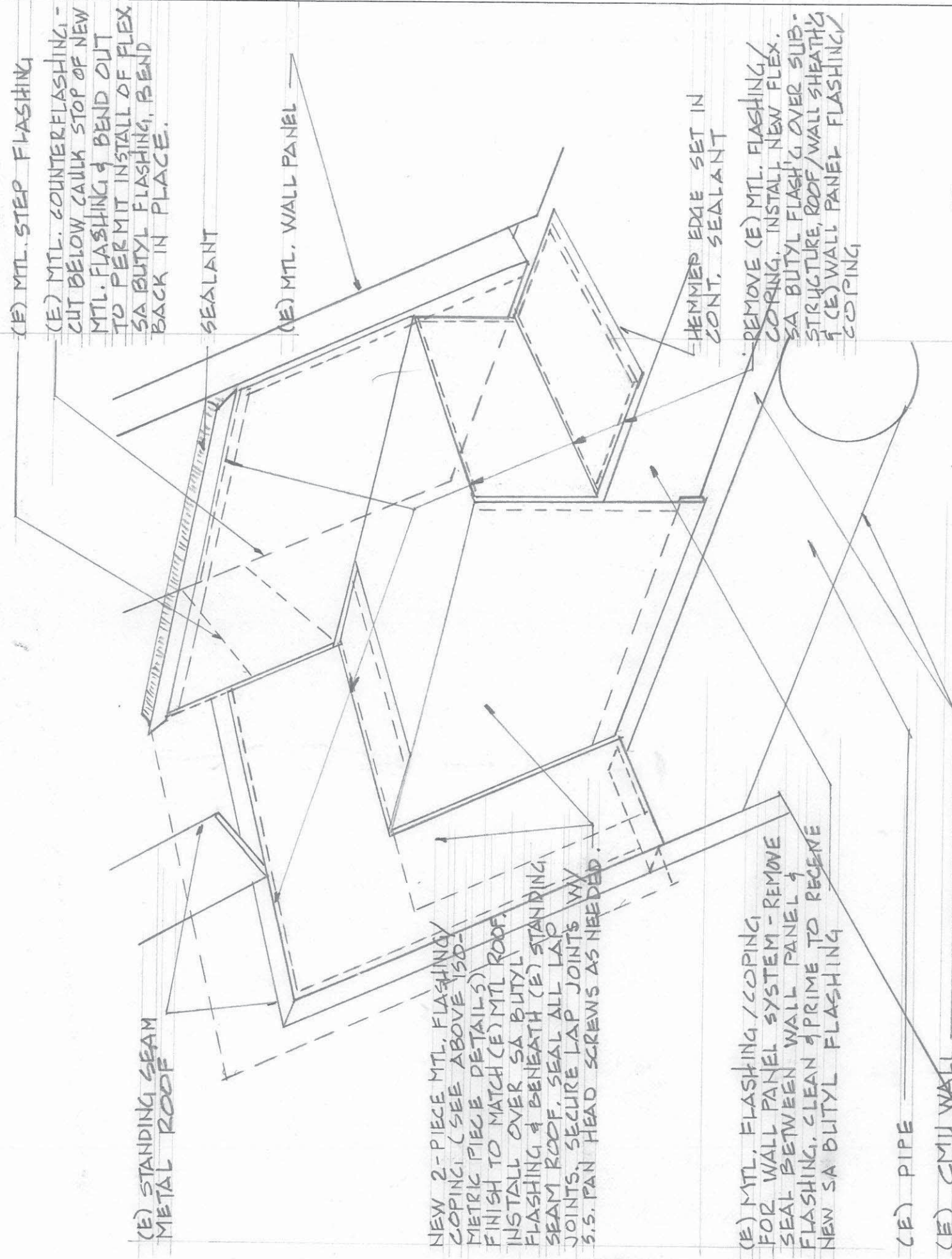
SHEET:  
RA-14

© Davidson & Associates, Inc. All rights reserved. No reproduction or distribution without the written permission of Davidson & Associates, Inc.

\* FIELD VERIFY OVERALL DIMENSIONS



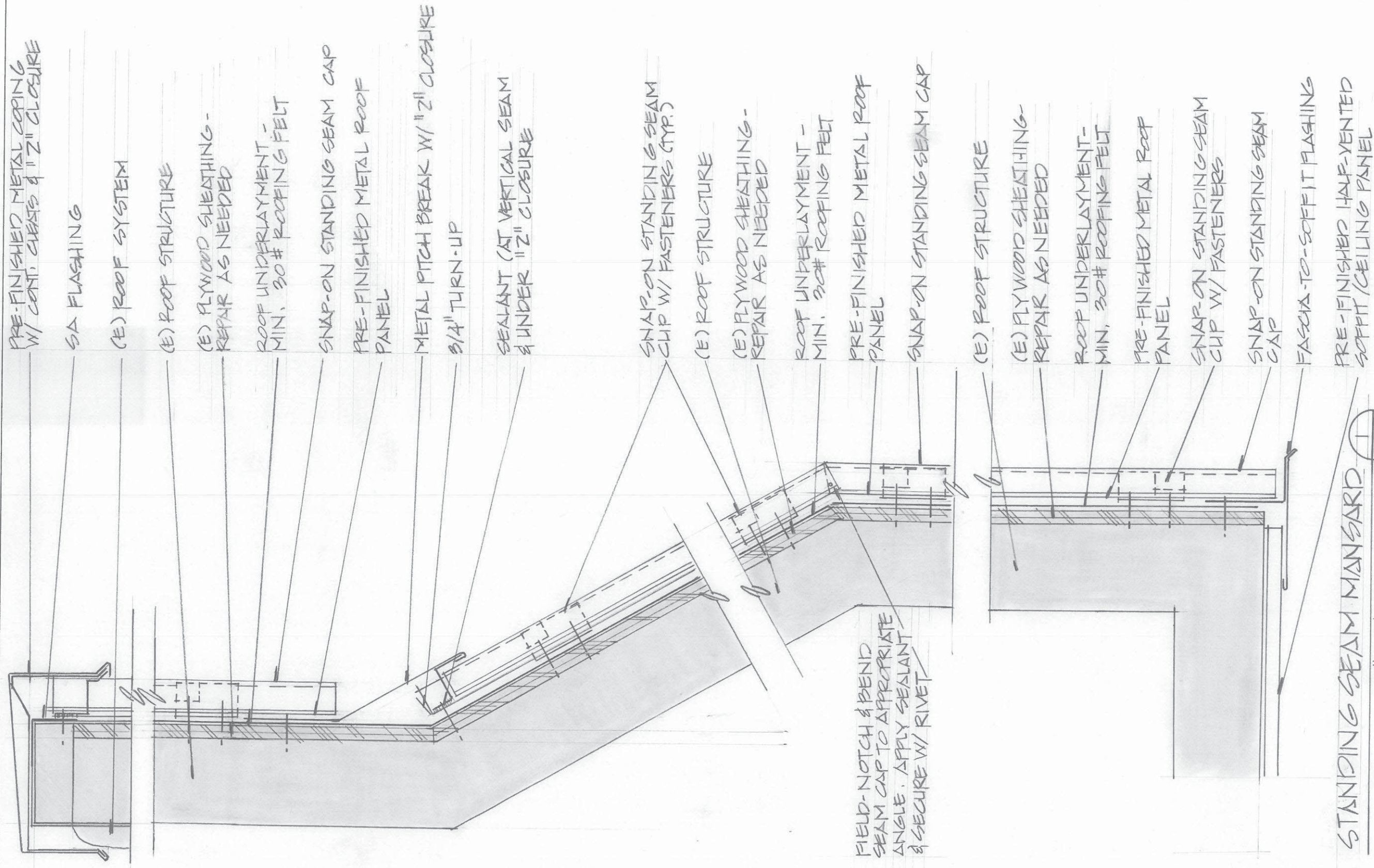
PART B ISOMETRIC - METAL FLASHING PIECES PART A



2-PIECE PRE-FINISHED METAL FLASHING / COPING SCALE: NTS

RA-15

PROJECT NO: R2017.024		PROFESSIONAL CERTIFICATION	
DRAWN BY:		ROBERT W. DAVIDSON, AIA	
DATE: 8-22-14		DAVIDSON & ASSOCIATES ARCHITECTS - CONSTRUCTION ANALYSTS 8120 WOODMONT AVE., SUITE 450, BETHESDA, MARYLAND 20814 PHONE: (301) 457-4324 FAX: (301) 457-3900 WWW.DAVIDSONARCHITECTS.COM	
REVISIONS:		HACC - GETTYSBURG CAMPUS FACADE REPAIRS	
SHEET: RA-15		TITLE DETAILS	
		SCALE: NTS	



PRE-FINISHED METAL COPING  
W/ CONT. GLEAS & 1/2" CLOSURE

SA FLASHING

(E) ROOF SYSTEM

(E) ROOF STRUCTURE

(E) PLYWOOD SHEATHING -  
REPAIR AS NEEDED

ROOF UNDERLAYMENT -  
MIN. 30# ROOFING FELT

SNAP-ON STANDING SEAM CAP

PRE-FINISHED METAL ROOF  
PANEL

METAL PITCH BREAK W/ 1/2" CLOSURE  
3/4" TURN-UP

SEALANT (AT VERTICAL SEAM  
& UNDER 1/2" CLOSURE

SNAP-ON STANDING SEAM  
CUP W/ FASTENERS (TYP.)

(E) ROOF STRUCTURE

(E) PLYWOOD SHEATHING -  
REPAIR AS NEEDED

ROOF UNDERLAYMENT -  
MIN. 30# ROOFING FELT

PRE-FINISHED METAL ROOF  
PANEL

SNAP-ON STANDING SEAM CAP

(E) ROOF STRUCTURE

(E) PLYWOOD SHEATHING -  
REPAIR AS NEEDED

ROOF UNDERLAYMENT -  
MIN. 30# ROOFING FELT

PRE-FINISHED METAL ROOF  
PANEL

SNAP-ON STANDING SEAM  
CUP W/ FASTENERS

SNAP-ON STANDING SEAM  
CAP

FASCIA TO-SOFFIT FLASHING

PRE-FINISHED HALF-VENTED  
SOFFIT / CEILING PANEL

FIELD-NOTCH & BEND  
SEAM CAP TO APPROPRIATE  
ANGLE. APPLY SEALANT  
& SECURE W/ RIVET

STANDING SEAM MANSARD

SCALE: 3/8" = 1'-0"

RA-16

SHEET:  
BA-16

REVISIONS:

DATE:  
8-22-14

DRAWN BY:

PROJECT NO:  
R2014.024

HACC-GETTYSBURG CAMPUS  
FACADE REPAIRS

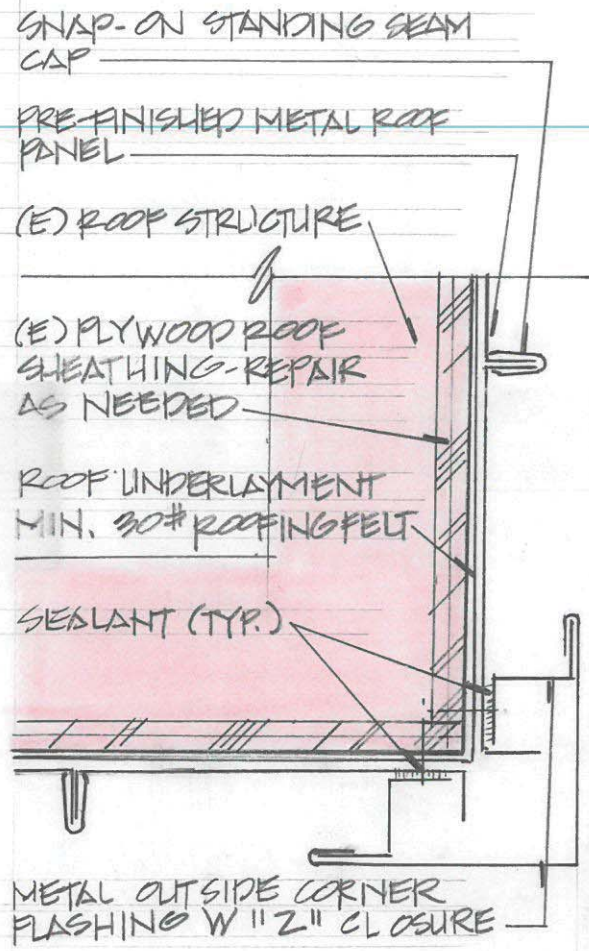
TITLE  
DETAILS

SCALE:  
3/8" = 1'-0"

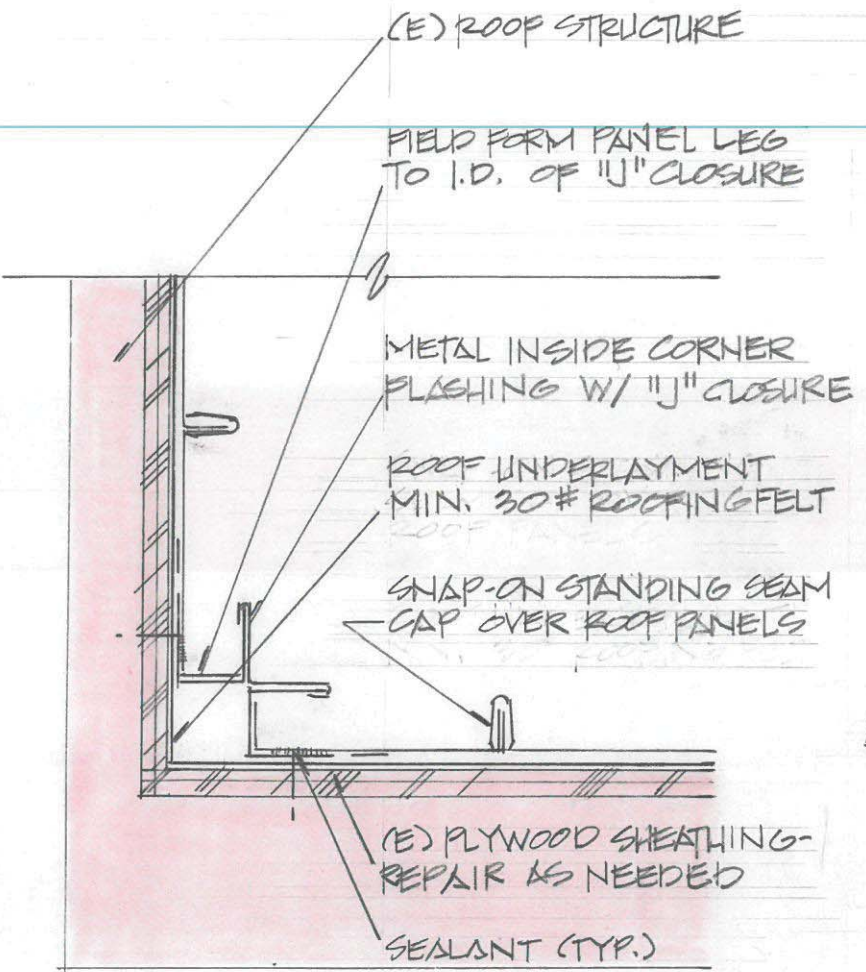
DAVIDSON & ASSOCIATES  
ARCHITECTS - CONSTRUCTION ANALYSTS  
8120 WOODMONT AVE., SUITE 450, BETHESDA, MARYLAND 20814  
PHONE: (301) 452-2244 FAX: (301) 452-2261  
WWW.DAVIDSONARCHITECTS.COM

ROBERT W. DAVIDSON, AIA

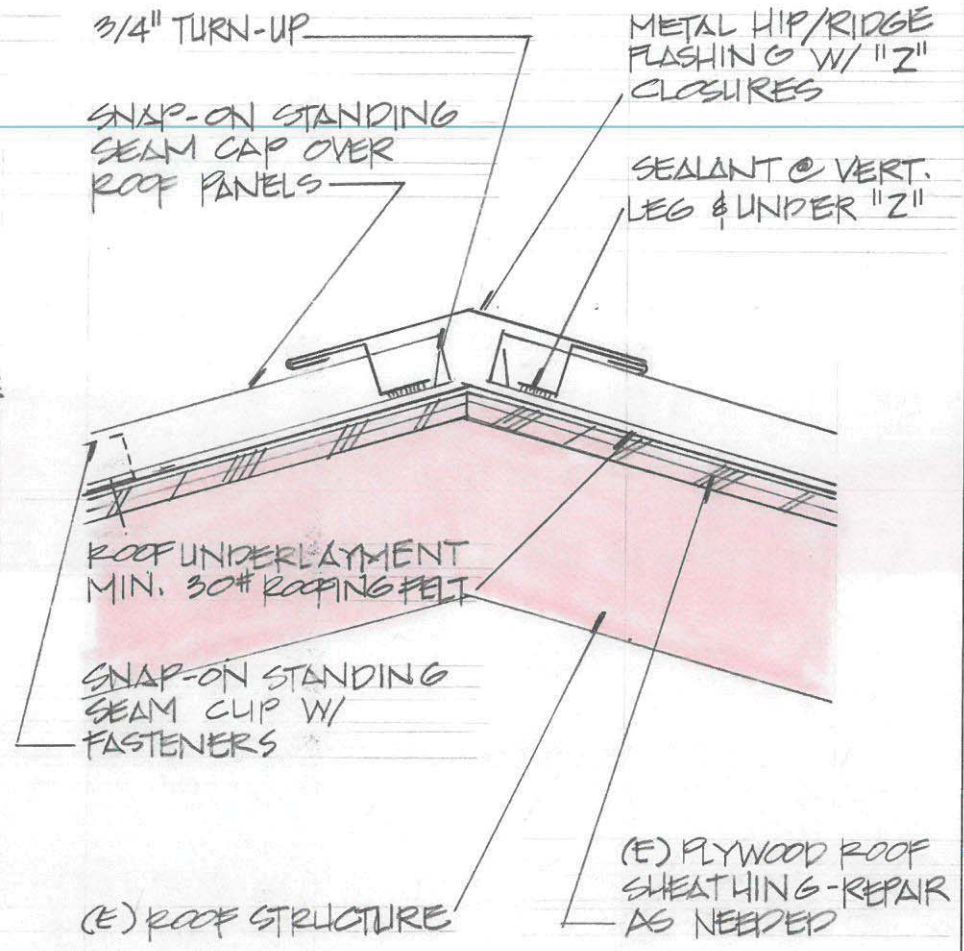
PROFESSIONAL CERTIFICATION



OUTSIDE CORNER 3  
SCALE: 3" = 1'-0" RA-17



INSIDE CORNER 2  
SCALE: 3" = 1'-0" RA-17



HIP/RIDGE 1  
SCALE: 3" = 1'-0" RA-17

PROFESSIONAL CERTIFICATION

ROBERT W. DAVIDSON, AIA

DAVIDSON & ASSOCIATES  
ARCHITECTS - CONSTRUCTION ANALYSTS  
8120 WOODMONT AVE., SUITE 450, BETHESDA, MARYLAND 20814  
PHONE: (301) 654-2424 FAX: (301) 654-2891 WWW.DAVIDSONARCHITECTS.COM

HACC-GETTYSBURG CAMPUS  
FACADE REPAIRS  
TITLE DETAILS  
SCALE: 3" = 1'-0"

PROJECT NO: R2014.024

DRAWN BY:

DATE: 8-22-14

REVISIONS:

SHEET:

RA-17

© Davidson & Associates, Inc. Copyright reserved in connection with this document.