



Harrisburg Area Community College
One HACC Drive
Harrisburg, PA 17110



Senator John J. Shumaker Public Safety Center






2011 Fire Training Calendar (www.HACC.edu)

Tuition Assistance is now Available for Courses Offered in this Catalog!

Eligible applicants must reside in Dauphin, Cumberland, Perry or York counties. Preference will be given to students with Military Service, and those enrolled in HACC's Fire Science degree program.

Who should apply

-  **Students pursuing an Associates Degree in Fire Science Technology**
-  **Students enrolling in Fire Training and Certification prep programs**
-  **Students interested in attending the HACC Career Fire Academy as a Pre-Service Candidate**

Interested students should fill-out the application form below. For more information call (717) 780-2607. All applications are subject to review and approval by the HACC Foundation.

This tuition assistance is made possible through the Douglas W. Pollock Fire Scholarship Endowment.

The Douglas W. Pollock Fire Academy Scholarship Application

(Please print all information and check appropriate information)

Name: _____ HACC ID #: _____

Mailing Address: _____

County of Residence: ___ Dauphin ___ Perry ___ Cumberland ___ York

___ I am currently in the military and/or National Guard

___ I have served in the military and/or National Guard

I am a volunteer firefighter at: _____ (firehouse) in _____ (township/municipality).

___ I understand scholarship monies if granted, can only be applied to tuition, fees, and related program expenses for my fire science or fire training courses conducted by HACC's Shumaker Public Safety Center.

I would like to enroll in the following course/program at HACC: ***(Open Enrollment Certification Exams are not eligible for scholarship assistance)***

Name of Course: _____

Section #: _____

Date of Course: _____

Price of Course: _____

Please provide a brief statement identifying how this scholarship will assist in your educational goals.

I understand that in the event that I am considered for/or receive a scholarship/award from the HACC Foundation. I authorize HACC and the HACC Foundation to release academic and/or Financial Aid information to agencies or individuals granting the funds.

Student Signature: _____

Date: _____

Parent's Signature: _____

Date: _____

(If applicant is under 18, Parent signature is required)

Please return completed form to:

**The HACC Foundation
One HACC Drive, M260
Harrisburg, PA 17110**

Coming Spring 2011 Facility Expansion and Renovations

We will begin construction on significant upgrades and renovations to the buildings and the training grounds. Ground breaking is expected in the spring of 2011, with construction to continue throughout the year, to include;

- ✓ Construction of a LEED®-certified Law Enforcement Complex to include an indoor firing range. Deterioration has severely limited the ability to use the facility for training. A state-of-the art firing range will allow an additional 200 students access to the facility and expand services to additional organizations and agencies.
- ✓ Renovation of the five-story fire training tower and smoke chamber to meet and exceed safety standards and to provide additional training access. There will be additional renovations to the driving pad, confined space, trench, vehicle rescue, flammable liquids, vehicle fire and HazMat training areas.

We will do our best to work in close coordination with the general contractors and construction crews during the renovations. While we do not expect many scheduling conflicts, there may be a need to reschedule or relocate some of our scheduled courses.

Help Tomorrow's Fire Responders, Today!

- ✓ Your investment in the Public Safety Center Partners program will have an immediate impact on Tomorrows First Responders, TODAY!

*For more information please contact Sheila Fleischer at (717) 780-2439 or e-mail sjfleisc@hacc.edu.
To make your pledge, fill out the form and mail to Sheila Fleischer at
HACC, One HACC Drive,
Mumma 260, Harrisburg PA, 17110.*



PSC Partners Senator John J. Shumaker Public Safety Center

I or We wish to pledge \$ _____ payable over _____ years (\$ _____ per year) to The HACC Foundation.

Name _____

Street _____

City _____ State _____ Zip _____

Home Phone () _____ Work Phone () _____

E-mail _____

Signature _____

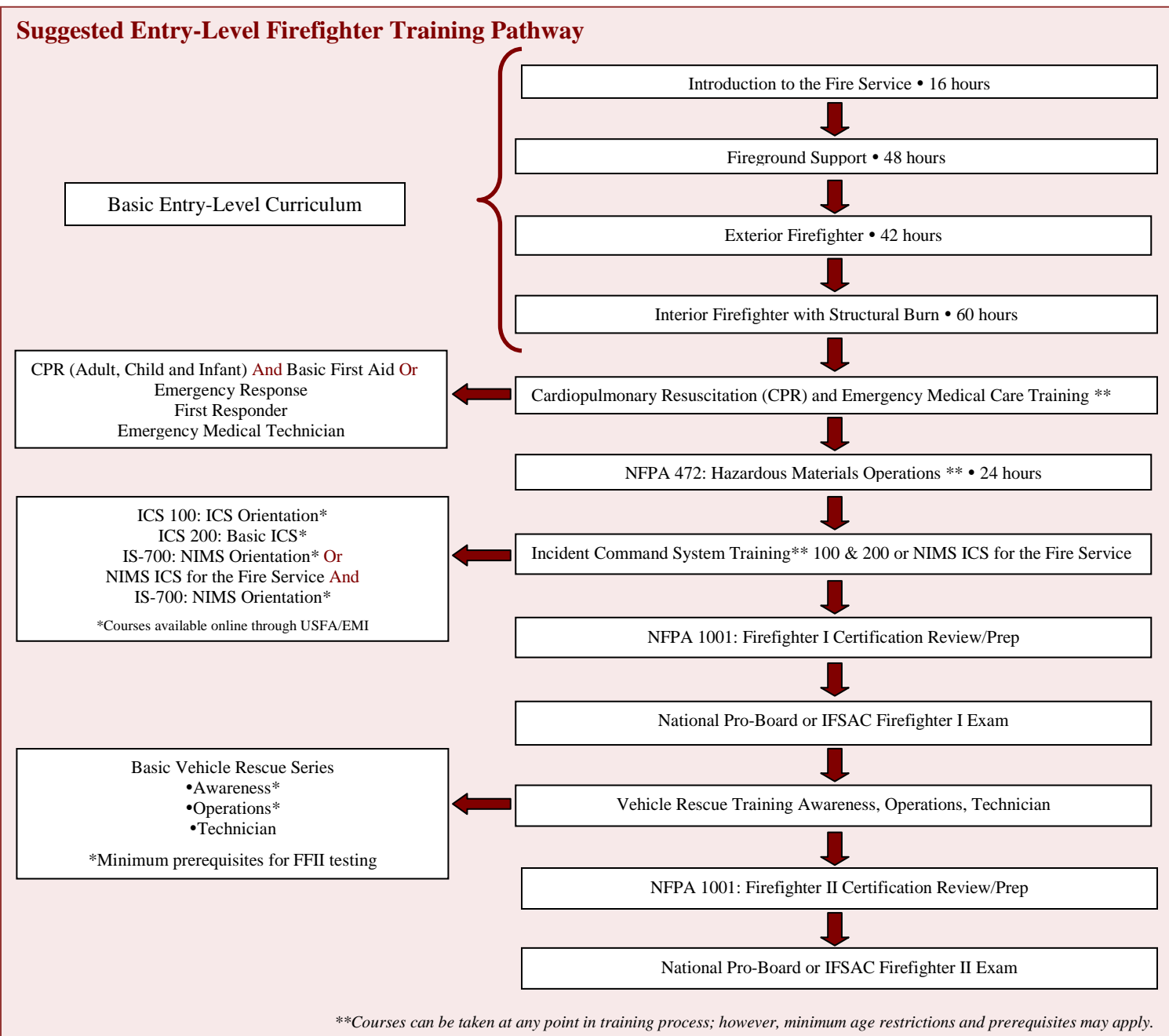
A copy of this completed pledge intent form will be returned with a letter of acknowledgement.
The HACC Foundation is a 501(c) (3) non-profit education trust. All gifts to the HACC Foundation are tax deductible.

Entry-Level Fire Training Programs

The entry level fire training curriculum consists of four separate programs encompassing a total of 160 hours of instruction. The curriculum is designed around NFPA 1001 – Standard for Firefighter Professional Qualifications at the Firefighter I and II level. The classes in the series are as follows:

- Introduction to the Fire Service (ELIS) – 16 hours
- Fire Ground Support (ELFG) – 48 hours
- Exterior Firefighter (ELEF) – 42 hours
- Interior Firefighter (ELIF) – 60 hours

Students enrolling in the entry level programs should be capable of reading and writing at the minimum of an 8th grade level and capable of moderate to strenuous physical activity. Successful completion of the programs will require students to demonstrate skill proficiency in various tasks associated with being a Firefighter as well as achieve a passing score of at least 70% on an end of class exam. For additional information regarding prerequisites, required equipment and age restrictions, refer to the specific class descriptions.



Entry-Level Fire Training Programs

Introduction to the Fire Service (PSFA – ELIS) Fee: \$95
This 16 hour program is designed to provide entry level firefighters with basic knowledge, skills, and abilities to begin their fire service career. It introduces new firefighters to basic information including an overview of the fire service, fire service organization, firefighter safety, personal protective equipment and terrorism awareness. Students attending this program will be provided with a copy of the Essentials of Firefighting and Emergency Response textbook and workbook, which will be required for all additional programs in the entry level series.

Prerequisites: None

Required Equipment: Structural Firefighters Protective Clothing
Minimum Age: 14

Fire Ground Support (PSFA – ELFG) Fee: \$125
This 48 hour program is designed to equip entry level firefighters with basic knowledge, skills, and abilities as they relate to fire ground and hazardous materials emergency scene operations. Topics covered include: Fire behavior, portable fire extinguishers, water supply, fire hose and appliances, ropes and knots and hazardous materials response.

Prerequisites: Introduction to the Fire Service (ELIS)

Required Equipment: Structural Firefighters Protective Clothing
Minimum Age: 14

Exterior Firefighter (PSFA – ELEF) Fee: \$150

This 42 hour program is designed to equip the entry level firefighters with the basic knowledge, skills, and abilities as they relate to exterior fire ground operations. Topics covered include: Building construction, ladders, communications, protective systems/sprinklers, forcible entry and fire prevention.

Prerequisites: Fireground Support (ELFG)

Required Equipment: Structural Firefighters Protective Clothing
Minimum Age: 16

Interior Firefighter (PSFA – ELIF) Fee: \$175

This 60 hour program is designed to equip entry level firefighters with basic knowledge, skills, and abilities as they relate to interior fire ground operations and fire attack. Topics covered include: Fire streams, self-contained breathing apparatus, rescue practices, ventilation, fire suppression, salvage, and firefighter survival.

Prerequisites: Exterior Firefighter (ELEF)

Required Equipment: Structural Firefighters Protective Clothing and SCBA with spare cylinder

Minimum Age: 18 (HACC SPSC Programs Only)

Structural Fire/Rescue Programs

Building Construction – Combustible (PSFA-BCP) Fee: \$45
Failure of the building or building components under fire conditions is a leading cause of firefighter death and injury. The ability to recognize or locate relevant information about a building before a fire, and to “read” a building during the progress of a fire, are essential survival skills. This course prepares the student to accomplish these skills in buildings of wood frame or ordinary construction. Topics covered include: Principles of building construction, type V wood frame building construction, type III ordinary construction, and type IV heavy timber construction.

Prerequisites: Introduction to the Fire Service (ELIS)

Required Equipment: Pen/pencil and note taking material
Minimum Age: 16

Engine Company Operations (PSFA – ECOP) Fee: \$75

This 16 hour program is designed to give participants the knowledge and skills necessary to function on the fire ground as a member of an engine company. Topics covered include: Fire behavior in structures, fire flow determination, developing fire flows, riding assignments, hand line advancement techniques, single engine drills and multiple engine drills.

Prerequisites: Interior Firefighter (ELIF), Essentials of Firefighting, HACC Fire Operations Module D or Firefighter I

Required Equipment: Structural Firefighting Protective Clothing with SCBA and spare cylinder

Minimum age: 18

Fire Attack at Attic Fires Fee: \$95

Fires that occur in attics or cocklofts are most often extremely dangerous situations for firefighters. This program allows firefighters to practice recognized techniques for combating fires in attics and cocklofts. Topics include: Hose line selection, hose line advancement techniques, water flow requirements, moving in, innovative firefighting techniques, and the use of special nozzles. Emphasis is placed on safety for all operations.

Prerequisites: Interior Firefighter (ELIF), Essentials of Firefighting, HACC Fire Operations Module D or Firefighter I

Required Equipment: Structural Firefighting PPE with SCBA and spare cylinder

Minimum Age: 18

Fire Attack at Basement Fires Fee: \$95

Fires that occur below grade, most often in basements or cellars, are extremely dangerous situations for firefighters. This program allows firefighters to practice recognized techniques for combating fires in common basements. Topics include: hose line selection, hose line advancement techniques, water flow requirements, moving in, innovative firefighting techniques, and the use of special nozzles. Emphasis is placed on safety for both interior and exterior operations.

Prerequisites: Interior Firefighter (ELIF), Essentials of Firefighting, HACC Fire Operations Module D or Firefighter I

Required Equipment: Structural Firefighting Protective Clothing with SCBA and spare cylinder

Minimum Age: 18

Structural Burn Session Fee: \$95

Combining our always-high-level of training with the element of Class “A” fuels has resulted in a truly realistic training experience. This course will provide the student with a review and application of the techniques used in safe firefighting practices in an actual fire environment. Emphasis is placed on safety for both interior and exterior operations. Students will need to bring full protective clothing and self-contained breathing apparatus. Students are encouraged to also bring a dry change of clothes and a spare SCBA cylinder. No facial hair that will interfere with the seal of the SCBA face piece will be allowed. Students must wear long pants and long sleeved shirts during all live-fire exercises.

Prerequisite: Interior Firefighter (ELIF), Essentials of Firefighting, HACC Fire Operations Module D or Firefighter I

Required Equipment: Structural Firefighters Protective Clothing; SCBA with spare cylinder

Minimum Age: 18

Rapid Intervention Programs

Rapid Intervention Team – Introduction (PSFA – RITC) Fee: \$25

This program is designed to prepare fire department personnel for implementation of a stand-by rescue team at structure fires and certain other incidents. Information is provided from existing fire departments utilizing the concept successfully. Topics covered include: Definitions and history of rapid intervention teams, case studies, firefighter death statistics and causes, applicable NFPA and OSHA standards related to RIT, implementation recommendations, and demonstration of firefighter rescue techniques.

Prerequisite: Introduction to the Fire Service (ELIS)

Required Equipment: Pen/pencil and note taking material

Minimum Age: 16

Rapid Intervention Team Operations I Fee: \$95

This program is designed to give personnel the essential knowledge, skills and abilities to function on the fire ground as a member of a Rapid Intervention Team (RIT). Topics covered include: Staffing the RIT, searching for missing firefighters, accessing and assessing a downed firefighter, and rescue/removal procedures. Concepts are presented using focused practical/skill sessions and integrated exercises.

Prerequisite: Interior Firefighter (ELIF), Essentials of Firefighting, HACC Fire Operations Module D or Firefighter I

Required Equipment: Structural Firefighters Protective Clothing and SCBA with spare cylinder

Minimum Age: 18

Rapid Intervention Team Operations II Fee: \$95

This program is designed to build on the concepts covered in the Rapid Intervention Team Operations I program and to give personnel the knowledge, skills and abilities to deal with more complex situations involving Rapid Intervention Teams (RIT) operations. Topics covered include: Advanced concepts in RIT, managing the RIT portion of a mayday incident, considerations for commercial, industrial and multiple residential occupancies, dealing with entrapment and entanglement situations, heavy lift operations, extended operations involving multiple teams, and packaging/removal of downed firefighters. Concepts are presented using focused practical/skill sessions and integrated exercises.

Prerequisite: Interior Firefighter (ELIF), Essentials of Firefighting, HACC Fire Operations Module D or Firefighter I

Required Equipment: Structural Firefighters Protective Clothing and SCBA with spare cylinder

Minimum Age: 18

Note: These classes are physically demanding. Students participating in the programs should be in good physical condition. No facial hair that will interfere with the seal of the SCBA face piece will be permitted.

Fire Inspector Program

Fire Inspector I Fee: \$325

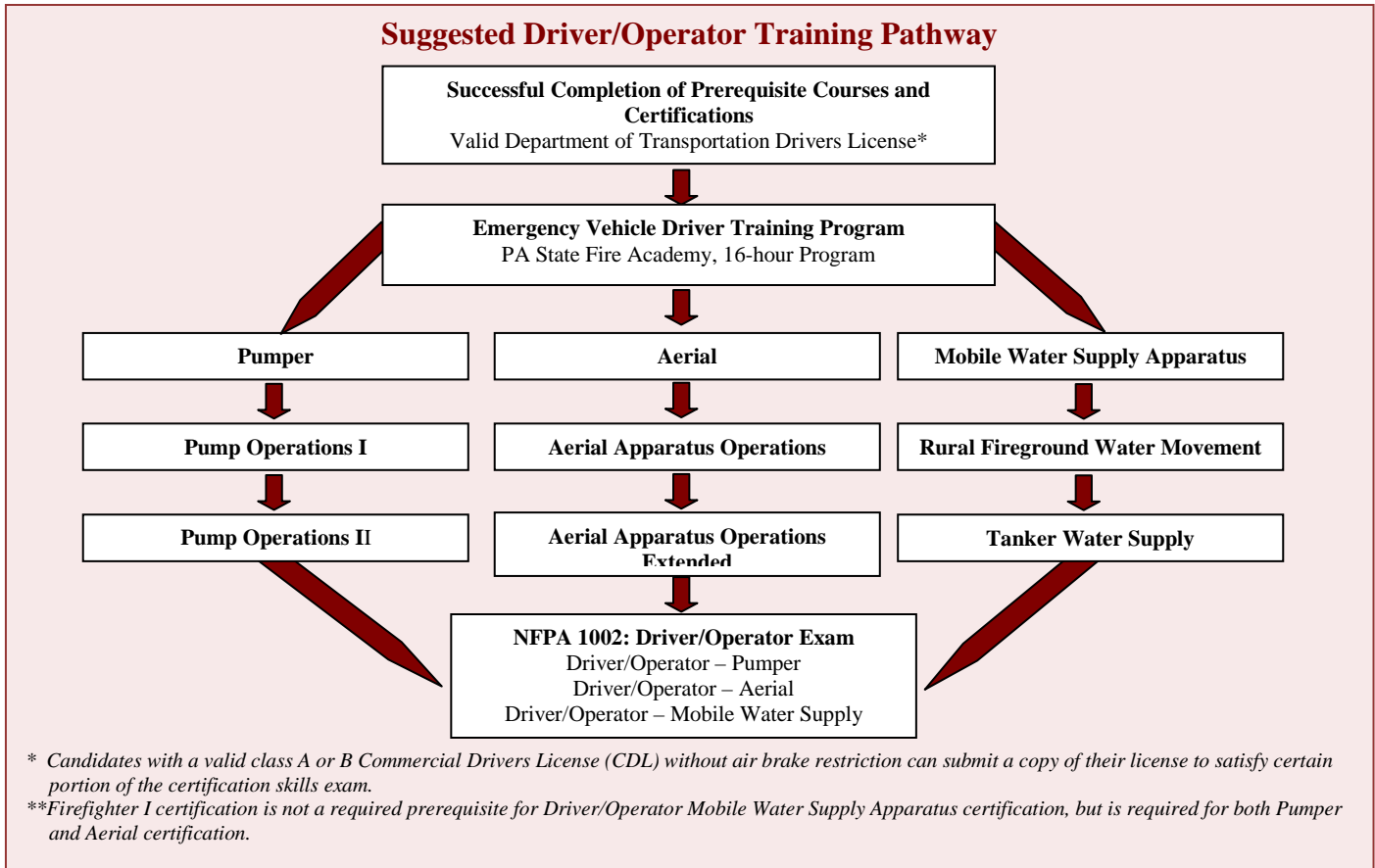
The objective of this course is to provide students with an in-depth review of the skills attendant to the duties of a Fire Inspector I job performance requirements (JPR) of National Fire Protection Association, 1031, Standard for Fire Professional Qualifications for Fire Inspector and Plan Examiner. Major topics covered include: Developing written correspondence; creating inspection checklists and forms; processing permit applications; process plan review applications; testifying at legal proceedings; investigating complex complaints; recommending modifications to codes and standards; recommending policies and procedures for the delivery of inspection services; computing the occupant load of a multi-use building; identifying the occupancy classification of mixed-used buildings; classify the type of construction in a new building; analyze the egress elements of a building or portion of a building; evaluate hazardous conditions involving equipment, processes, and operations; evaluate emergency planning and preparedness procedures; verify fire flows for a site; verify code compliance for storage, handling, and use of flammable and combustible liquids and gases; evaluate code compliance for the storage, handling, and use of hazardous materials; determine the fire growth potential in a building or space; inspect emergency access for a site; classify the occupancy type; compute the occupant load; field verify the installation of a fire protection system; verify that egress elements are provided; and field verify the construction type of building or of a portion thereof. Students successfully completing with program will be eligible to receive Fire Inspector I certification through the National Board on Fire Service Professional Qualifications.

Prerequisites: Hazardous Materials First Responder Awareness Certification

Required Equipment: Pen/pencil and note taking material

Minimum Age: 18

Driver/Operator Training Programs



Aerial Apparatus Operations (PSFA – AELA) Fee: \$75
 This 16 hour program is designed to introduce students to the basic design and operation of fire service aerial devices. Topics covered include: Aerial apparatus design and safety, spotting and stabilizing, basic operating features, practical scenarios, maintenance and testing procedures, and use of elevated master streams. Departments are recommended to send multiple students and their departmental apparatus.

Prerequisites: Introduction to the Fire Service (ELIS)
Required Equipment: Structural Firefighting Protective Clothing; pen/pencil and note taking material
Minimum Age: 18

Emergency Vehicle Driver Training Program Fee: \$50 (PSFA-EVOC)
 PA DOH CE CREDITS: FR 16/ EMT 16/ ALS 16
 This course teaches firefighters and emergency responders to operate emergency vehicles in a safe manner. Course topics include defensive driving, emergency response, vehicle maintenance, vehicle laws, and completion of a driver training obstacle course.
Prerequisites: Introduction to the Fire Service (ELIS) or applicable EMS training/certification
Required Equipment: Pen/pencil and note taking material, Emergency vehicle for 2nd day of program
Minimum Age: 18

NOTE: HACC SPSC does not provide vehicles to students for these programs. Students must provide an emergency services vehicles in order to complete the skills portion of these programs.

Pump Operations I (PSFA-PUOP) Fee: \$60
 The Pump Operations course is designed for those who may be beginning the operation of fire department pumps and those who wish to expand their knowledge of fire service pumps and pumping operations. Topics include: principles of pumping, mechanical principles of pumping, function and operation of the fire pump and its accessories, theory of drafting, operator maintenance of the pump, hydrant operations, basic water systems, and basic principles of discharge. Practical evolutions of pump operations will be utilized. Students must have protective clothing. SCBA is not required. Departments are recommended to send multiple students and their departmental apparatus.

Prerequisite: Fireground Support (ELFG)
Required Equipment: Structural Firefighters Protective Clothing
Minimum Age: 18

Pump Operations II (PSFA-PUOA) Fee: \$60
 The Pump Operations II course is a continuation of fire service pump operations. This class will focus on the advanced skills for fire service pump operation for those firefighters wishing to perfect their skill as a fire apparatus engineer or qualified pump operator. Topics include: hydraulics, fire stream development by the pump operator including single lines, multiple lines, master streams and elevated streams. Also included are standpipe operations, sprinkler systems, intake hydraulics, hydrant operations and drafting. Practical evolutions of fire pump operations will be utilized. Departments are recommended to send multiple students and their departmental apparatus.
Prerequisite: Pump Operations I
Required Equipment: Structural Firefighters Protective Clothing
Minimum Age: 18

ICS, Command and Management Training Programs

ICS 300 – Intermediate ICS

Fee: \$100

PA DOH CE CREDITS: FR 16/EMT 16/ALS 16

This course builds on the ICS principles presented in both the ICS 100 and 200 programs, and focuses on ICS principles for expanding and complex incidents. Topics covered include: Unified Command, incident/event assessment, establishing incident objectives, the planning process, development of an Incident Action Plan (IAP), incident resource management, demobilization, transfer of command and closeout. Target audience includes supervisory personnel who may be tasked with handling expanding and/or complex emergency incidents.

Prerequisites: ICS 200 – Basic ICS, NIMS ICS for the Fire Service (NICS-FS) or NIMS ICS for EMS (NICS-EMS)

Required Equipment: Pen/pencil and note taking material

ICS 400 – Advanced ICS

Fee: \$95

PA DOH CE CREDITS: FR 10/EMT 10/ALS 10

This course is will provide students with the knowledge and skills to function in the Incident Command System on large scale, major incidents. Topics covered include: Review of Command and General Staff responsibilities within the ICS, major and/or complex incident management, Area Command, and multi-agency coordination. Target audience includes personnel who may be tasked with serving in the Command or General Staff positions at a major and/or complex incident.

Prerequisites: ICS 300 – Intermediate ICS

Required Equipment: Pen/pencil and note taking material

Incident Safety Officer (PSFA-ISO)

Fee: \$45

PA DOH CE CREDITS: FR 5.5/EMT 5.5/ALS 5.5

This course focuses on the duties of the person who finds him/herself in the role of the responding safety officer at the scene of an incident. It is an incident specific, scene oriented course designed to teach what a safety officer on the scene needs to know and be able to do, using scenarios to convey instructional points. Students should be experienced company officers, familiar with safety issues, the ICS, hazardous materials management, and applicable NFPA standards and federal regulations.

Prerequisites: NIMS ICS for the Fire Service (or equivalent) and Hazardous Materials Operations

Required Equipment: Pen/pencil and note taking material

Minimum Age: 16

NFA-NIMS Incident Command System for the Fire Service (PSFA—NIMS:ICS)

Fee: \$45

PA DOH CE CREDITS: FR 9/EMT 9/ALS 9

This course describes and explains the basic concepts of emergency management, and deals with a system by which these concepts can be applied to a wide variety of emergency incidents. Although the course is taught principally from a fire service perspective, attendance would benefit any emergency responder who must work under (or implement) an ICS in response to any type of emergency. Program content is consistent with the National Incident Management System (NIMS). This program is equivalent to ICS 100 and 200 training.

Required Equipment: Pen/pencil and note taking material

Minimum Age: 18

Prerequisite: Interior Firefighter (ELIF) or equivalent and NIMS, An Introduction (IS-700)

Fire Officer I: Certification Course (48 hours)

Fee: \$325

This program is designed to provide current and aspiring officers and officer candidates from career, volunteer, federal, and combination fire service organizations with an educationally sound, objective-based course of instruction based on NFPA 1021 – Standard for Fire Officer Professional Qualifications, Chapter 4, 2003 Edition. This very intensive program requires students to actively participate in the classroom in addition to submit numerous homework and out-of-class assignments. Each class session has an assignment that addresses a specific, or set of specific, NFPA Job Performance Requirements (JPR's). Students are expected to produce professional, typed papers that are grammatically correct and properly punctuated, and use proper sentence and paragraph structure. These writing assignments are challenging and require attention to detail in the planning and development process.

Prerequisites: Firefighter II (IFSAC or Pro-Board), Fire Instructor I, current Hazardous Materials Operations certification (IFSAC or Pro-Board) or yearly training, ICS 200 – Basic ICS (or equivalent).

Required Equipment: Pen/pencil and note taking material, personal computer

NOTE: Students must attend 100% of the sessions and submit all homework assignments on time to be eligible to receive a Certificate of Completion for the program.

Fire Officer II—Certification Course (48 hours)

Fee: \$325

This program was designed as a sequel to the Fire Officer I course. It expounds upon the administrative and operational readiness challenges that a mid-level supervisor (company officer/commander/captain) encounters on a daily basis. Fire Officer II provides current and aspiring officers and officer candidates from career, volunteer, federal, and combination fire service organizations with an educationally sound, objective-based course of instruction. This program addresses all of the component requirements contained in NFPA 1021, Standard for Fire Officer Professional Qualifications, Chapter 5, 2003 Edition.

This very intensive program requires students to actively participate in the classroom in addition to submit numerous homework and out-of-class assignments. Each class session has an assignment that addresses a specific, or set of specific, NFPA Job Performance Requirements (JPR's). Students are expected to produce professional, typed papers that are grammatically correct and properly punctuated, and use proper sentence and paragraph structure. These writing assignments are challenging and require attention to detail in the planning and development process.

Prerequisites: Firefighter II (IFSAC or Pro-Board), Fire Instructor I, Fire Officer I, current Hazardous Materials Operations certification (IFSAC or Pro-Board) or yearly training, ICS 200 – Basic ICS (or equivalent).

Required Equipment: Pen/pencil and note taking material, personal computer

NOTE: Students must attend 100% of the sessions and submit all homework assignments on time to be eligible to receive a Certificate of Completion for the program.

Suggested Fire Officer Training Pathway

Successful Completion of Prerequisite Courses and Certifications

NFPA 1001: Firefighter I
NFPA 1001: Firefighter II
NFPA 472 Hazardous Materials Operations
NIMS ICS for the Fire Service, ICS 200 (or equivalent)



NFPA 1041: Fire Instructor I Certification

Options include:

- Instructional Techniques for Company Officers/Instructor I Prep
- NFPA 1041: Fire Instructor I Challenge Exam
- Educational Methodology/NFPA 1041 Fire Instructor I Program
- Fire Science 207: Educational Methodology/NFPA 1041 Fire Instructor I



Additional Incident Command Systems/NIMS Training*

ICS 300: Intermediate ICS for Expanding Incidents for Operational Fire Responders
ICS 400: Advanced ICS for Command and General Staff, Complex Incidents and MACS for Operational First Responders
IS-800A: National Response Plan, An Introduction
(available online through FEMA/EMI)

**Additional ICS training is not required as a prerequisite, but strongly recommended.*



NFPA 1021: Fire Officer I Program



NFPA 1021: Fire Officer II Program



NFPA 1041: Fire Instructor II Program

Hazardous Materials Programs

Hazardous Materials First Responder Awareness Fee: \$25 (PSFA-RIHM)

PA DOH CE CREDITS: FR 4/ EMT 4/ ALS 4

This course is designed for individuals likely to witness or discover a hazardous materials release and who have not been trained to take any action beyond notifying proper authorities. This course satisfies OSHA's "Hazwopper" (29 CFR 1910.120) training requirements for firefighters, EMS personnel, and police who respond to potential HazMat incidents.

Prerequisites: N/A

Required Equipment: Pen/pencil and note taking material

Minimum Age: 14

Hazardous Materials First Responder Operations Fee: \$75 (PSFA – HMO)

PA DOH CE CREDITS: FR 21.5/ EMT 21.5/ ALS 21.5

This course is designed to prepare students to respond to hazardous materials incidents and function at the operations level in accordance with NFPA 472. Topics covered include: Scene size-up, incident management, markings and labels, containers and packaging, chemical and physical properties of hazardous materials, personal protective clothing, defensive spill control activities, and emergency decontamination. State Fire Academy facial hair policy applies to individuals attending this program.

Prerequisites: HazMat Awareness (PSFA-RIHM)

Required Equipment: Structural Firefighting Protective Clothing; SCBA

Minimum Age: 16

Hazardous Materials Technician Fee: \$500

This 40-hour course is designed to challenge the participants by exposing them to the advanced information and techniques needed for handling today's hazardous materials incidents. Topics will include the chemistry and recognizing factors of hazardous materials, use of the latest detection and monitoring equipment, new advancements in proper personal equipment, specific and practical decontamination procedures, product safety and containment precautions, and the tasks of establishing an effective while safe incident management system focusing on risk assessments. Field exercises will consist of various workstations where participants will be involved in extensive "hands-on" practices of the techniques demonstrated. Upon successful completion of this program students will be eligible to take the National Pro-Board Hazardous Materials Technician written and practical exams, which will be administered as part of this comprehensive program.

Prerequisites: Hazardous Materials Operations (HMO); Respiratory Protection Practices I (non-fire service personnel)

Required Equipment: Helmet, gloves, boots, work clothes/coveralls, safety glasses/goggles, SCBA with spare cylinder
Minimum Age: 18

Technical Rescue Programs

Confined Space Awareness

Fee: \$25

PA DOH CE CREDITS: FR 4/EMT 4/ALS 4

This class will provide the participant with the information needed to identify confined spaces and assess the hazards associated with confined spaces in order to avoid serious injury or death.

Information will be provided and alarm procedures discussed for handling confined space incidents as a first responder. This class does not involve, nor does it certify, persons to make confined space entries. This program is ideal for all rescue personnel.

Prerequisites: None

Required Equipment: Pen/pencil and note taking material

Minimum Age: 14

Confined Space Rescue Operations (PSFA-CSR) Fee: \$75

PA DOH CE CREDITS: FR 7.5/EMT 7.5/ALS 7.5

This 16-hour program trains students to conduct rescues from confined spaces. Topics covered include: Scene management, size-up, risk benefit analysis, air monitoring and ventilation, entry techniques, patient packaging, removal and termination. Students will have opportunity to apply techniques in actual confined spaces.

Prerequisites: Respiratory Protection I (REPA) or equivalent and Basic Rigging for Rope Rescue (ROBR)

Required Equipment: Work clothes or coveralls, helmet, gloves, boots, safety glasses/goggles and SCBA

Minimum Age: 18

Confined Space Rescue Technician

Fee: \$500

PA DOH CE CREDITS: FR 11.5/ EMT 11.5/ALS 11.5

This 40 hour program will cover the NFPA 1670 competencies at the Technician level for Confined Space Entry and Rescue operations. Topics covered include preplanning, scene size-up and assessment, hazard control, atmospheric monitoring, ventilation, respiratory protection, control of hazardous energy, entry procedures, patient management, and termination considerations. Upon successful completion of this program students will be administered as part of this comprehensive program.

eligible to take the National Pro-Board Confined Space Rescue Technician written and practical exams, which will be administered as part of this comprehensive program.

Prerequisites: Respiratory Protection I (REPA) or equivalent and Basic Rigging for Rope Rescue (ROBR)

Required Equipment: Work clothes or coveralls, helmet, gloves, boots, safety glasses/goggles and SCBA

Minimum Age: 18

Rescue Practices – General Requirements for Rescue Technicians

Fee: \$500

This 40 hour program is designed to cover the NFPA 1006 Standard for Rescue Technician Professional Qualifications Job Performance Requirements (JPR's) for Chapter 5 – General Requirements. These JPR's must be met prior to receiving certification as a Rescue Technician in any sub-specialty. Topics covered include: Incident management and site operations, use of tactical work sheets, basic ground search techniques, helicopter ground support operations, victim management (triage, assessment and patient packaging), rope/knots/hitches, construction and operation of simple mechanical advantage systems, construction and operation of belay systems, low-angle litter evacuation techniques, equipment inspection and maintenance, and termination procedures. Students meeting prerequisites and successfully completing this program should be adequately prepared to take the written and practical certification exams for the NFPA 1006 Rescue – General Requirements level. Upon successful completion of this program students will be eligible to take the National Pro-Board General Requirements Rescue Technician written and practical exams, which will be administered as part of this comprehensive program.

Prerequisites: Hazardous Materials Operations (HMO) or higher level of training and current CPR certification

Required Equipment: Work clothes or coveralls, helmet, gloves, boots, and safety glasses/goggles

Minimum Age: 18

Structural Collapse Operations-Level I

Fee: \$25

(PSFA-SCOA)

PA DOH CE CREDITS: FR 1/EMT 1/ALS 1

This course is designed to make firefighters aware of safety requirements at the scene of a structure collapse and enable them to participate effectively during the initial stages of structural collapse operations. Students will learn to identify and mitigate hazards, recognize the need for assistance, and perform as an integral part of the overall operation, once technical teams are on-site.

Fee: \$25: Introduction to the Fire Service (ELIS)

Fee: \$25: Pen/pencil and note taking material

Minimum Age: 14

Structural Collapse Operations-Level II

Fee: \$95

(PSFA-SCOF)

PA DOH CE CREDITS: FR 2.5/EMT 2.5/ALS 2.5

This course is designed to teach firefighters the skills needed to function at the operational level at structural collapse incidents involving light frame and heavy wall structures. Students should be able to size-up a damaged structure for stability and victim location, recognize and mitigate hazards, construct and properly place emergency shoring, access and search void spaces, and “package” and extricate patients.

Basic Vehicle Rescue Programs

Basic Vehicle Rescue—Awareness (PSFA-BVRA) Fee: \$75

PA DOH CE CREDITS: FR 10/EMT 10/ALS 10

This program is the first in a three (3) part series designed to train personnel in vehicle rescue operations. Topics covered include: Vehicle anatomy and structure, supplemental restraint systems, vehicle rescue life cycle, scene size-up, hazard recognition and control and vehicle stabilization. This course is intended for personnel who need to have an awareness of vehicle rescue operations and how to assist a rescue company at a rescue scene.

Prerequisites: N/A

Required Equipment: Coat, pants, helmet, gloves, boots, hearing protection and safety glasses/goggles

Minimum Age: 16

Basic Vehicle Rescue—Technician (PSFA-BVRT) Fee: \$95

PA DOH CE CREDITS: FR 7/EMT 7/ALS 7

This program is the third in a three (3) part series designed to train personnel in vehicle rescue operations. Topics covered include: Use and care of powered tools and equipment, gaining access, disentanglement techniques and extrication operations. Upon successful completion of this course, the student will be eligible to take the written Basic Vehicle Rescue Technician certification exam.

Prerequisites: Basic Vehicle Rescue Operations (BVRO)

Required Equipment: Coat, pants, helmet, gloves, boots, hearing protection and safety glasses/goggles

Minimum Age: 18

Basic Vehicle Rescue—Operations (PSFA-BVRO) Fee: \$75

PA DOH CE CREDITS: FR 11/EMT 11/ALS 11

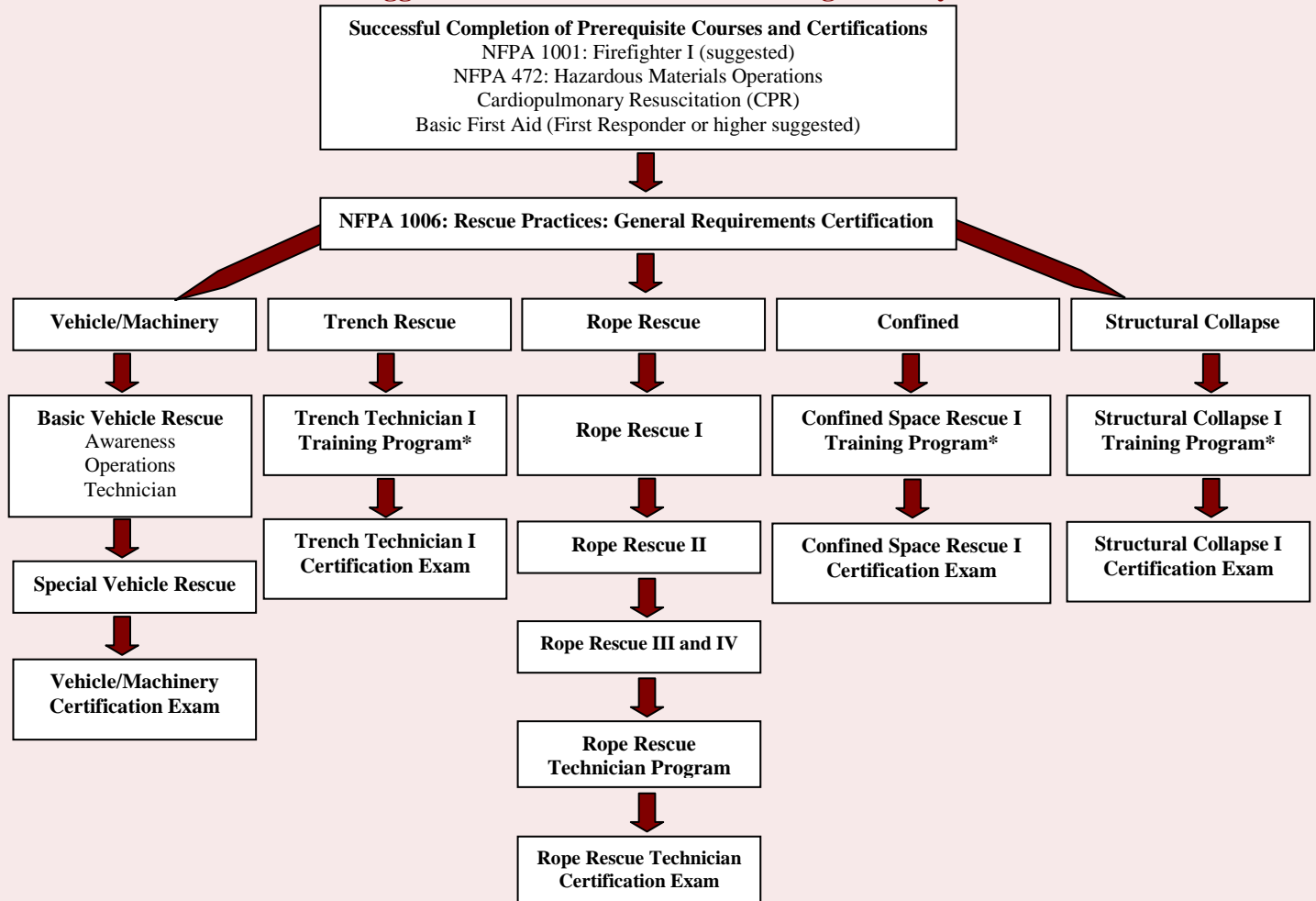
This program is the second in a three (3) part series designed to train personnel in vehicle rescue operations. Topics covered include: Use of hand tools, gaining access, patient management and packaging, disentanglement, extrication and termination operations.

Prerequisites: Basic Vehicle Rescue Awareness (BVRA)

Required Equipment: Coat, pants, helmet, gloves, boots, hearing protection and safety glasses/goggles

Minimum Age: 16

Suggested Rescue Technician Training Pathway



*Certification available as part of program

Rope Rescue Training Programs

Basic Rigging for Rope Rescue (PSFA-ROBR) Fee: \$95

PA DOH CE CREDITS: FR 2/EMT 2/ALS 2

This course provides an introduction to rope rescue, basic rope construction, knots, and basic rappelling techniques. Current rope technology and adjunct equipment are combined with practical exercises to demonstrate the use of rope and related equipment in a non-rappelling-type rescue. Students must provide clean leather work gloves, ankle-supporting footwear, a helmet with chin strap, safety glasses, and proper dress for all weather conditions. Each student will receive (1) 5.5' x 8mm piece of accessory cord, a 15' x 1" piece of tubular webbing and a Technical Rescue Riggers Guide.

Prerequisites: Introduction to the Fire Service (ELIS)

Required Equipment: See description above

Minimum Age: 14

Rope High Angle Rescue I (PSFA-RORE) Fee: \$95

PA DOH CE CREDITS: FR 10/EMT 10/ALS 10

This course provides an introduction to rope rescue and current rope technology. This hands-on course emphasizes personnel safety, rescue techniques and equipment, knots and hitches, anchor points, harnesses and rappelling, rope construction, rope strength, litter tie-ins, belays, and extensive practical activities. Each class participant will receive (1) 5.5' x 8mm piece of accessory cord and a 15' x 1" piece of tubular webbing. Students must provide clean leather work gloves, ankle-supporting footwear, a helmet with chin strap, safety glasses, and proper dress for all weather conditions.

Prerequisites: Fireground Support (ELFG)

Required Equipment: See description above

Minimum Age: 16

Rope High Angle Rescue II (PSFA-RORA) Fee: \$95

PA DOH CE CREDITS: FR 7/EMT 7/ALS 7

This course provides rescue personnel with the knowledge and skills to rescue and remove a patient from an area with the assistance of rope systems. The students will learn to build basic haul systems, ascending systems and advanced descending techniques. Students are instructed in one-person rescue procedures and low-angle stokes evolutions. Students must provide clean leather work gloves, ankle-supporting footwear, a helmet with chin strap, safety glasses, and proper dress for all weather conditions. Each class participant will receive a Technical Rescue Riggers Guide.

Prerequisites: Rope Rescue I (RORE)

Required Equipment: See description above

Minimum Age: 16

Educational Methodology/Instructor Programs

NFPA 1041 Fire Instructor I: Educational Methodology for Local Level Instructors (PSFA-EMLL) Fee: \$325

This course teaches the firefighter about adult learning, teaching techniques, preparation of instructional objectives, and development of lesson plans to meet those objectives. Various formats of audiovisual aids will be demonstrated and each student will prepare and deliver at least one short teaching session on a fire-related topic. Successful completion of this course is required to become an instructor if you have no prior teaching experience.

Prerequisites: Interior Firefighting (ELIF) or equivalent; 5 years of experience in the fire service

Required Equipment: Pen/pencil and note taking material, personal computer

NFPA 1041 Fire Instructor II Fee: \$250

This course is designed to prepare students for certification at the Fire Instructor II level in accordance with the Job Performance Requirements of NFPA 1041. Topics covered include: Lesson plan design and development, instructional techniques, hazard/risk assessment in the training environment, high hazard training safety plans, program budgeting, paperwork completion, instructor performance evaluations, evaluation mechanism design, and test item analysis. Target audience includes personnel and Instructors who have previously completed Educational Methodology through HACC.

Prerequisites: Interior Firefighting (ELIF) or equivalent; Fire Instructor I certification

Required Equipment: Pen/pencil and note taking material, personal computer

Instructional Techniques for Company Officers/Fire Instructor I Certification Prep Fee: \$150

This course is designed to introduce Firefighters and Company Officers to instructional principles and techniques relevant to fire service training at the company level. Topics covered include: Adult learning, objectives and lesson plans, methods of instructional delivery, tools and techniques, handling problems and performance evaluation. The focus of this program will be to prepare students to challenge the Fire Service Instructor I exam which will be offered in conjunction with this program.

Prerequisites: Introduction to the Fire Service (ELIS)

Required Equipment: Pen/pencil and note taking material

Certification Review and Preparation Programs

HACC Firefighter I Certification Review Fee: \$75

This 16 hour program is targeted to trained and/or experienced Firefighters who wish to refresh basic knowledge and skills in preparation for taking the written and practical National Pro-Board exams for NFPA 1001 Firefighter I certification.

Prerequisites for Certification: Structural Burn Session (PSFA – SBS), HACC Fire Operations Module D or Interior Firefighter w/structural burn (or equivalent program meeting Structural Burn requirements recognized by the State Fire Academy, current CPR certification (adult, child and infant), current basic first aid training (or higher level of EMS certification), and current NFPA 472 Hazardous Materials Operations level training.

Required Equipment: Structural Firefighters Protective Clothing, eye protection and SCBA
Minimum Age: 18

HACC Firefighter II Certification Review Fee: \$50

This 8 hour program is targeted to Firefighters certified to the Firefighter I level who wish to refresh basic knowledge and skills in preparation for taking the written and practical National Pro-Board exams for NFPA 1001 Firefighter II certification.

Prerequisites for Certification: Certification at the Firefighter I level (IFSAC or Pro-Board); current NFPA 472 Hazardous Materials Operations level training; Basic Vehicle Rescue Awareness and Operations (or equivalent or higher level of vehicle rescue training recognized by the State Fire Academy).

Required Equipment: Structural Firefighters Protective Clothing, eye protection and SCBA
Minimum Age: 18

Certification Examination Information

PLEASE READ CAREFULLY

- ✓ Open enrollment certification exams are limited to the first 24 applicants.
- ✓ Candidates are required to complete a **separate application** for enrollment into certification examinations.
- ✓ Candidates can download current applications and skill sheets for exams from the Office of the State Fire Commissioner web site at <http://www.osfc.state.pa.us>
- ✓ Candidates are expected to be able to read and follow the application directions to complete the application in a timely fashion with little assistance.
- ✓ HACC will then review the applications for completeness and notify the candidate of acceptance into examinations. Any incomplete applications will be returned to the candidate.

Individuals interested in the certification process are asked to call the Public Safety Center for additional information, a detailed description of the process involved for each level of certification testing, and pricing for exams. Departments wishing to hold closed certification tests for their personnel should contact the Shumaker Public Safety Center at (717) 780-2607 or email sebookwa@hacc.edu for further information.

Completed applications with all necessary documentation attached (including a permission to bill form) should be submitted to HACC by the application deadline dates listed for each exam on the following page.

Open Enrollment Exams

Exams by Programs

NFPA 1001: Firefighter I (written \$25 / Practical \$175) \$200

Written Exam	Practical Exam	Location	Application Due
Apr 29, 6:30PM	Apr 30, 8:00AM	SPSC	Apr 8
Jul 29, 6:30PM	Jul 30, 8:00AM	SPSC	Jul 8
Oct 21, 6:30PM	Oct 22, 8:00AM	SPSC	Sep 30

NFPA 1001: Firefighter II (written \$25 / Practical \$175) \$200

Written Exam	Practical Exam	Location	Application Due
May 1, 8:00AM	May 1, 8:00AM	SPSC	Apr 10
Oct 23, 8:00AM	Oct 23, 8:00PM	SPSC	Oct 2

NFPA 1002: Driver/Operator: Pumper \$150

Written & Practical Exam	Location	Application Due
Aug 27; 8:00AM	SPSC	Aug 6

NFPA 1002: Driver/Operator: Aerial \$150

Written & Practical Exam	Location	Application Due
Nov 19; 8:00AM	SPSC	Aug 5

NFPA 1002: Driver/Operator: Mobile Water Supply \$150

Written & Practical Exam	Location	Application Due
Jul 16; 8:00AM	SPSC	Jun 25

NFPA 472: Hazardous Materials Awareness \$25

Exam Date	Time	Location	Application Due
Feb 7	1:00 / 6:30PM	SPSC	Jan 17
Mar 7	1:00 / 6:30PM	SPSC	Feb 14
Apr 4	1:00 / 6:30PM	SPSC	Mar 14
May 9	1:00 / 6:30PM	SPSC	Apr 18
Jun 6	1:00 / 6:30PM	SPSC	May 16
Jul 11	1:00 / 6:30PM	SPSC	Jun 20
Aug 8	1:00 / 6:30PM	SPSC	Jul 11
Sep 12	1:00 / 6:30PM	SPSC	Aug 15
Oct 3	1:00 / 6:30PM	SPSC	Sep 12
Nov 7	1:00 / 6:30PM	SPSC	Oct 17
Dec 5	1:00 / 6:30PM	SPSC	Nov 14

NFPA 472: Hazardous Materials Operations \$150

Written & Practical Exam	Location	Application Due
Mar 12; 8:00AM	SPSC	Feb 5
Oct 16; 8:00AM	SPSC	Oct 1

NFPA 1006: Rescue Technician: Vehicle & Machinery I \$150

Written & Practical Exam	Location	Application Due
Aug 13; 8:00AM	SPSC	Jun 25

NFPA 472: Hazardous Materials Technician Challenge \$150 / With Class \$500

Section	Dates	Time	Location
70011	Aug 15, 16, 17, 18, 19	8:00 AM	SPSC
N/A	(Open Exam) Aug 20	8:00 AM	SPSC

NFPA 1031: Fire Inspector I Program \$325

Section	Dates	Time	Location
70013	Tuesdays, Aug 23 – Dec 14	7-9:45PM	SPSC

NFPA 1021: Fire Officer I Certification Program \$325

Section	Dates	Time	Location
61501	Feb 19, 20, Mar 5, 6, 19, 20	8:00AM	SPSC

NFPA 1021: Fire Officer II Certification Program \$325

Section	Dates	Time	Location
70033	Oct 22, 23, Nov 5, 6, 19, 20	8:00AM	SPSC

NFPA 1041: Fire Instructor I Certification Exam Challenge \$150 / With Class \$325

Section	Dates	Time	Location
N/A	(Challenge Exam) May 17	8:00 AM	SPSC
70042	Dec 7, 8, 9, 10, 11	8:00 AM	SPSC

NFPA 1041: Fire Instructor II Certification Exam \$250

Section	Dates	Time	Location
61502	Feb 22, 23, 24, 25	8:00AM	SPSC

NFPA 1006: Rescue Technician: General Requirements Challenge \$150 / With Class \$500

Section	Dates	Time	Location
61525	Jun 13, 14, 15, 16, 17	8:00 AM	SPSC
N/A	(Open Exam) Jun 18	8:00 AM	SPSC

NFPA 1006: Rescue Technician: Confined Space I Challenge \$150 / With Class \$500

Section	Dates	Time	Location
70005	Jul 18, 19, 20, 21, 22	8:00 AM	SPSC
N/A	(Open Exam) Jul 23	8:00 AM	SPSC

Certification Exam Levels and Prerequisite Requirements

Exam	Prerequisites
Firefighter I	18 years of age; completion of PA State Fire Academy 16 hour Structural Burn Session (or equivalent); current HazMat Operations training/certification; current CPR (infant, child, adult); current First Aid training (or higher level of EMS credentialing)
Firefighter II	Firefighter I certification; Vehicle Rescue I or II, or BVR Awareness and Operations; current HazMat Operations Level training/certification; submission of a detailed commercial occupancy preplan; submission of fire department report for an actual incident, submission of a residential diagram indicating primary and secondary routes of egress as well as other fire safety related information
Fire Officer I	Firefighter II, Fire Instructor I, NIMS ICS for the Fire Service (or equivalent), current HazMat Operations Level training/certification (within one year of course)
Fire Officer II	Fire Officer I; current HazMat Operations Level training/certification
Fire Instructor I	Certification by program – see program description
Fire Instructor II	Fire Instructor I
Fire Inspector I	18 years of age; current HazMat Awareness certification
Hazardous Materials Awareness	14 years of age; proof of current training
Hazardous Materials Operations	16 years of age; HazMat Awareness certification
Hazardous Materials Technician	18 years of age; HazMat Operations certification
HazMat On-Scene Incident Commander	Hazardous Materials Operations Level Certification (or higher)
Driver/Operator – Aerial	21 years of age; Firefighter I; valid drivers license
Driver/Operator – Pumper	21 years of age; Firefighter I; valid drivers license
Driver/Operator – Mobile Water Supply Apparatus	21 years of age; valid drivers license
Rescue – General Requirements	18 years old; current HazMat Operations training/certification; current CPR (infant, child and adult); American Red Cross Emergency Responder or PA Department of Health First Responder certification (new curriculum) or higher can be utilized in lieu of testing Station D – Patient triage, treatment and packaging
Rescue – Vehicle/Machinery Levels I/II	Rescue – General Requirements for Rescuers Certification; current HazMat Operations training/certification
Rescue – Rope Rescue Technician Levels I/II	Rescue – General Requirements for Rescuers certification; current HazMat Operations training/certification
Rescue – Confined Space Rescue Technician Levels I/II	Rescue – General Requirements for Rescuers certification; current HazMat Operations training/certification; current CPR certification (infant, child and adult)
Rescue – Trench Rescue Technician Levels I/II	Rescue – General Requirements for Rescuers certification; current HazMat Operations training/certification; current CPR certification (infant, child and adult)
Rescue – Structural Collapse Rescue Technician Levels I/II	Rescue General Requirements certification; current HazMat Operations training/certification; current CPR certification (infant, child and adult)

Training Programs and Certification Exam Dates

Evening classes begin at 6:30PM. Weekend and weekday classes begin at 8:00AM.

January 2011 Courses		Hours	Section	Dates	Fee	Time/Key	Location
Introduction to the Fire Service (1)		16	61493	Jan 22, 23	\$95	Weekend	SPSC
Introduction to the Fire Service (2)		16	61494	Jan 25, 27, Feb 1, 3	\$95	Evenings	SPSC
HACC Annual Instructor & Evaluator In-Service Meeting		8	61495	Jan 29	N/C	Weekend	SPSC
February 2011 Courses		Hours	Section	Dates	Fee	Time/Key	Location
Introduction to the Fire Service (3)		16	61496	Feb 5, 6	\$95	Weekend	SPSC
Instructional Techniques for Company Officers/Instructor I Prep		16	61497	Feb 5, 6	\$150	Weekend	SPSC
NFPA 472 Hazardous Materials Awareness Certification Exam		2	----	Feb 7	\$25	Evening	SPSC
ICS 300: Intermediate ICS		24	61498	Feb 8, 10, 12, 13	\$95**	Eve/Weekend	SPSC
NFA: Principles of Building Construction – Combustible		16	61499	Feb 12, 13	\$45	Weekend	SPSC
Fireground Support (1)		48	61500	Feb 19, 20, 26, 27, Mar 5, 6	\$125	Weekend	SPSC
NFPA 1021: Fire Officer I		48	61501	Feb 19, 20, Mar 5, 6, 19, 20	\$325	Weekend	SPSC
NFPA 1041: Fire Instructor II Program		32	61502	Feb 22, 23, 24, 25	\$250	Weekday	SPSC
NFPA 472: Hazardous Materials Awareness		4	61503	Feb 26	\$25	Weekend	SPSC
ICS 400: Advanced ICS		16	61504	Feb 26, 27	\$95**	Weekend	SPSC
March 2011 Courses		Hours	Section	Dates	Fee	Time/Key	Location
NFPA 472: Hazardous Materials Operations		24	61505	Mar 1, 3, 5, 6	\$75	Eve/Weekend	SPSC
Basic Rigging for Rope Rescue		16	61506	Mar 5, 6	\$95	Weekend	SPSC
NFPA 472: Hazardous Materials Awareness Certification Exam		2	----	Mar 7	\$25	Evenings	SPSC
Fireground Support (2)		48	61507	Mar 8, 10, 12, 13, 15, 17, 19, 20	\$125	Eve/Weekend	SPSC
NFPA 472: Hazardous Materials Operations Certification Exam		8	----	Mar 12	\$150	Weekend	SPSC
Basic Vehicle Rescue: Awareness		16	61508	Mar 19, 20	\$75	Weekend	SPSC
Structural Burn Session		16	61509	Mar 26, 27	\$110	Weekend	SPSC
April 2011 Courses		Hours	Section	Dates	Fee	Time/Key	Location
NFPA 472: Hazardous Materials Awareness Certification Exam		2	----	Apr 4	\$25	Evenings	SPSC
Exterior Firefighter (1)		42	61512	Apr 9, 10, 12, 14, 16, 17	\$150	Eve/Weekend	SPSC
Basic Vehicle Rescue: Operations		16	61513	Apr 9, 10	\$75	Weekend	SPSC
Firefighter I Certification Review		16	61514	Apr 9, 10	\$75	Weekend	SPSC
Firefighter II Certification Review		8	61515	Apr 17	\$50	Weekend	SPSC
NFPA 1001: Firefighter I Certification Exam (written)		2	----	Apr 29	\$25	Evening	SPSC
NFPA 1001: Firefighter I Certification Exam (practical)		8	----	Apr 30	\$175	Weekend	SPSC
May 2011 Courses		Hours	Section	Dates	Fee	Time/Key	Location
NFPA 1001: Firefighter II Certification Exam (written/practical)		8	----	May 1	\$200	Weekend	SPSC
NFPA 472: Hazardous Materials Awareness Certification Exam		2	----	May 2	\$25	Evening	SPSC
Basic Vehicle Rescue: Technician		16	61516	May 7, 8	\$95	Weekend	SPSC
Interior Firefighter (1)		64	61517	May 7, 8, 10, 12, 14, 15, 17, 19, 21, 22	\$175	Eve/Weekend	SPSC
Emergency Vehicle Driver Training Course		16	61519	May 14, 15	\$50	Weekend	SPSC
NFPA 1041: Fire Instructor I Certification Exam (open challenge)		8	----	May 17	\$150	Weekday	SPSC
Rope Rescue I		16	61518	May 21, 22	\$95	Weekend	SPSC

* Price includes National Pro-Board testing fees.

** No fee for individuals from agencies within the South Central Task Force

SPSC (Shumaker Public Safety Center, HACC's Harrisburg Campus)
 WWCC (Wildwood Conference Center, HACC's Harrisburg Campus)

June 2011 Courses	Hours	Section	Dates	Fee	Time/Key	Location
Rope Rescue II	16	61520	Jun 4, 5	\$95	Weekend	SPSC
Pump Operations I	16	61521	Jun 4, 5	\$60	Weekend	SPSC
NFPA 472: Hazardous Materials Awareness Certification Exam	2	----	Jun 6	\$25	Evening	SPSC
NFPA 1006 General Requirements for Rescue Technicians	40	61525	Jun 13, 14, 15, 16, 17	\$325	Weekday	SPSC
Introduction to the Fire Services (4)	16	61522	Jun 14, 15	\$95	Weekday	SPSC
Fireground Support (3)	48	61526	Jun 16, 17, 20, 21, 22, 23	\$125	Weekday	SPSC
Fire Attack at Basement Fires	8	61524	Jun 18	\$95	Weekend	SPSC
NFPA 1006: General Requirements Rescue Technician Certification Exam	8	----	Jun 18	\$150	Weekend	SPSC
NFPA 472: Hazardous Materials Awareness	4	61527	Jun 25	\$25	Weekend	SPSC
Engine Company Operations	16	61528	Jun 25, 26	\$75	Weekend	SPSC
Exterior Firefighter	42	61529	Jun 27, 28, 29, Jul 6, 7	\$150	Weekday	SPSC

July 2011	Hours	Section	Dates	Fee	Time/Key	Location
NFPA 472: Hazardous Materials Awareness Certification Exam	2	----	Jul 11	\$25	Evening	SPSC
Interior Firefighter (2)	64	70001	Ju 11, 12, 13, 14, 18, 19, 20, 21	\$175	Weekday	SPSC
NFPA 1006: Confined Space Rescue: Awareness	4	70002	Jul 15	\$75	Evening	SPSC
NFPA 1006: Confined Space Rescue: Operations	16	70003	Jul 16, 17	\$75	Weekend	SPSC
NFPA 1002: Driver Operator Mobile Water Supply Apparatus Certification Exam	8	----	Jul 16	\$150	Weekend	SPSC
NFPA 1006: Confined Space Rescue Technician Program	40	70005	Jul 18, 19, 20, 21, 22	\$500	Weekday	SPSC
NFPA 1006: Confined Space Rescue Technician Certification Exam	8	----	Jul 23	\$150	Weekend	SPSC
NFPA 472: Hazardous Materials Operations	24	70065	Jul 25, 26, 27	\$75	Weekday	SPSC
Firefighter I Certification Review	8	70045	Jul 28	\$75	Weekday	SPSC
NFPA 1001: Firefighter I Certification Exam (written)	2	----	Jul 29	\$25	Evening	SPSC
NFPA 1001: Firefighter I Certification Exam (practical)	8	----	Jul 30	\$175	Weekend	SPSC

August 2011	Hours	Section	Dates	Fee	Time/Key	Location
NFPA 472: Hazardous Materials Awareness Certification Exam	2	----	Aug 1	\$25	Evening	SPSC
Basic Vehicle Rescue: Awareness	16	70006	Aug 1, 2	\$75	Weekday	SPSC
Basic Vehicle Rescue: Operations	16	70004	Aug 3, 4	\$75	Weekday	SPSC
Basic Vehicle Rescue: Technician	16	70007	Aug 8, 9	\$95	Weekday	SPSC
Structural Collapse I: Awareness	4	70008	Aug 12	\$25	Evening	SPSC
NFPA 1006: Resue Technician: Vehicle & Machniery Certification Exam	8	----	Aug 13	\$150	Weekend	SPSC
Structural Collapse II: Operations	16	70009	Aug 13, 14	\$95	Weekend	SPSC
Pump Operations II	16	70010	Aug 13, 14	\$60	Weekend	SPSC
NFPA 472: Hazardous Materials Technicians Program	40	70011	Aug 15, 16, 17, 18, 19	\$500*	Weekdays	SPSC
NFPA 472: Hazardous Materials Technicians Certification Exam	8	----	Aug 20	\$150	Weekend	SPSC
NFPA 1031: Fire Inspector I	40	70013	Aug 23 – Dec 14	\$325	Evening	SPSC
NFPA 472: Hazardous Materials Operations	24	70067	Aug 23, 25, 27, 28	\$75	Eve/Weekend	SPSC
NFPA 1002: Driver Operator Pumper Certification Exam	8	----	Aug 27	\$150	Weekend	SPSC

* Price includes National Pro-Board testing fees.

** No fee for individuals from agencies within the South Central Task Force

SPSC (Shumaker Public Safety Center, HACC's Harrisburg Campus
 WWCC (Wildwood Conference Center, HACC's Harrisburg Campus

September 2011	Hours	Section	Dates	Fee	Time/Key	Location
NFPA 472 Hazardous Materials Awareness Certification Exam	2	----	Sep 12	\$25	Evening	SPSC
Rapid Intervention Teams: Introduction	4	70016	Sep 9	\$25	Evening	SPSC
Introduction to the Fire Service (5)	16	70017	Sep 10, 11	\$95	Weekend	SPSC
Rapid Intervention Teams: Operation I	16	70018	Sep 10, 11	\$95	Weekend	SPSC
Basic Vehicle Rescue – Awareness	16	70019	Sep 17, 18	\$75	Weekend	SPSC
Introduction to the Fire Service (6)	16	70020	Sep 17, 18	\$95	Weekend	SPSC
Fire Attack at Attic Fires	8	70021	Sep 17	\$95	Weekend	SPSC
Structural Burn Session	16	70022	Sep 24, 25	\$110	Weekend	SPSC
Emergency Vehicle Driver Training Course	16	70023	Sep 24, 25	\$50	Weekend	SPSC
Fireground Support (4)	48	70024	Sep 27, 29, Oct 1, 2, 4, 6, 8, 9,	\$125	Eve/Weekend	SPSC

October 2011 Courses	Hours	Section	Dates	Fee	Time/Key	Location
Firefighter I Certification Review	16	70027	Oct 1, 2	\$75	Weekend	SPSC
NFPA 472: Hazardous Materials Awareness Certification Exam	2	----	Oct 3	\$25	Evening	SPSC
NFPA 472: Hazardous Materials Awareness	4	70028	Oct 8	\$25	Weekend	SPSC
Basic Vehicle Rescue: Operations	16	70029	Oct 8, 9	\$75	Weekend	SPSC
NFPA 472: Hazardous Materials Operation Refresher	6	70198	Oct 15	\$50	Weekend	SPSC
Rapid Intervention Team Operations II	16	70031	Oct 15, 16	\$95	Weekend	SPSC
Firefighter II Certification Review	8	70032	Oct 16	\$50	Weekend	SPSC
NFPA 472: Hazardous Materials Operations Certification Exam	8	----	Oct 16	\$150	Weekend	SPSC
NFPA 1001: Firefighter I Certification Exam (written)	2	----	Oct 21	\$25	Evening	SPSC
NFPA 1001: Firefighter I Certification Exam (practical)	8	----	Oct 22	\$175	Weekend	SPSC
NFPA 1001: Firefighter II Certification Exam (written)	8	----	Oct 23	\$200	Weekend	SPSC
NFPA 1021: Fire Officer II Program	48	70033	Oct 22, 23, Nov 5, 6, 19, 20	\$325	Weekend	SPSC
Exterior Firefighter	42	70034	Oct 25, 27, 29, 30, Nov 1, 3, 5, 6,	\$150	Eve/Weekend	SPSC

November 2011 Courses	Hours	Section	Dates	Fee	Time/Key	Location
Basic Vehicle Rescue: Technician	16	70037	Nov 5, 6	\$95	Weekend	SPSC
NFPA 472: Hazardous Materials Awareness Certification Exam	2	----	Nov 7	\$25	Evening	SPSC
Aerial Apparatus Practices	16	70038	Nov 12, 13	\$75	Weekend	SPSC
NFPA 1002: Driver Operator Aerial Certification Exam	8	----	Nov 19	\$150	Weekend	SPSC
Interior Firefighter (3)	64	70039	Nov 19, 20, 22, 29, Dec 1, 3, 4, 6, 8, 10, 11	\$175	Eve/Weekend	SPSC

December 2011 Courses	Hours	Section	Dates	Fee	Time/Key	Location
NFA NIMS for the Fire Service	16	70046	Dec 3, 4	\$45	Weekend	SPSC
NFPA 472: Hazardous Materials Awareness Certification Exam	2	----	Dec 5	\$25	Evening	SPSC
Educational Methodology/NFPA 1041: Fire Instructor I Certification	40	70042	Dec 7, 8, 9, 10, 11	\$325	Weekday/Wknd	SPSC
Incident Safety Officer	16	70043	Dec 10, 11	\$45	Weekend	SPSC

* Price includes National Pro-Board testing fees.

** No fee for individuals from agencies within the South Central Task Force

SPSC (Shumaker Public Safety Center, HACC's Harrisburg Campus
 WWCC (Wildwood Conference Center, HACC's Harrisburg Campus

Disability Accommodations and Testing Information

Students Requesting Accommodations

- A wide range of services are available through the college's Office of Disability Services for students with learning, medical/physical or psychological disabilities
- Students requesting accommodations for disabilities are urged to contact the Office of Disability Services or the Fire Training Unit at their earliest possible convenience in order to arrange for appropriate accommodations and referrals
- ***Requests for accommodations should be forwarded well in advance of the scheduled class sessions in order to assure time to review documentation provided by the student***
- If not forwarded in advance, students should make the instructor aware of their request on the first scheduled class session
- No testing accommodations will be afforded students unless documentation has been previously provided for review
- In order to receive disability services students must submit documentation of the disability to the Office for Disability Services
- When requesting accommodations students are responsible for submitting an assessment report that:
 - ◆ Is completed by a qualified professional such as a medical doctor or licensed psychologist.
 - ◆ Contains the evaluator's name and title and assessment date.
 - ◆ Was completed within the last three years.
 - ◆ Identifies the disability, describes the limits it imposes, and includes recommended accommodations.
- For further information regarding disability services contact:

**Office of Disability Services
Carole Kerper
Director of Disability Services
One HACC Drive
Harrisburg PA 17110
Phone: 717-780-2614
Fax: 717-780-1115**

Retesting Policy

- ◆ Students requiring retests for end of course exams will be afforded two additional retest attempts (total of three testing opportunities) in addition to the initial attempt within one calendar year of the initial exam
- ◆ If students are unsuccessful after the third retest attempt they will need to retake the program of instruction prior to being able to attempt the test again
- ◆ No student will be permitted to enroll in a program of instruction requiring the completion of a prerequisite course until the student has successfully completed the program of instruction to include any applicable written testing
- ◆ Retesting will be accommodated by appointment only
- ◆ Students showing up late or without an appointment will not be permitted to test and will need to schedule an alternate date to retake the exam
- ◆ Scheduled retest sessions for 2011 are as follows:

Date	Session 1	Session 2
February 7	1PM	6:30PM
March 7	1PM	6:30PM
April 4	1PM	6:30PM
May 9	1PM	6:30PM
June 6	1PM	6:30PM
July 11	1PM	6:30PM
August 8	1PM	6:30PM
September 12	1PM	6:30PM
October 3	1PM	6:30PM
November 7	1PM	6:30PM
December 5	1PM	6:30PM

- ◆ To schedule a retest appointment call the Fire Training Unit at (717) 780-1106 or e-mail sebookwa@hacc.edu

REGISTRATION INFORMATION

1. Early registration is encouraged; classes fill quickly.
2. HACC reserves the right to charge, increase, or change a fee.
3. **CANCELLATION:** Classes which do not meet the minimum enrollment by (15 calendar days) prior to the starting date will be cancelled.
4. For information regarding services, activities, and facilities that are accessible to and usable by persons with disabilities contact: Carole Kerper, Director, Disability Services, Whitaker Hall 123, telephone 780-2614.
5. For questions or additional information call: SPSC 780-2607 or (800) 222-4222, ext. 2607

CANCELLATION, REFUND, AND “NO SHOW” POLICIES

The following policies will apply regarding class cancellations, refunds and pre-registered students who fail to attend a scheduled course of instruction.

- *Students wishing to withdraw from a specific program for situations that don't involve an emergency must do so three (3) working days prior to the first class session in order to eligible for a full refund. No refund of tuition of fees will be made if the request is made less than three (3) days from the start of the class.*
- Notice of cancellation less than two (2) weeks from the start of the program must be received in writing by the Fire Training Unit either via e-mail at sebookwa@hacc.edu or at the following address:

**Harrisburg Area Community College
Public Safety Center – Fire Training Unit
1 HACC Drive
Harrisburg, PA 1711**
- Students who have pre-registered for a class and fail to show up for that class without notifying the Fire Training Unit prior to the first class session will be responsible for any applicable class fees and tuition. If the student attending the program is being sponsored by a department who is paying for the program, then that department will be responsible for paying any applicable class fees or tuition if the student fails to attend a program without prior notification.
- Students who are pre-registered for classes and fail to attend two (2) or more programs within a calendar year will run the risk of having their department's training privileges suspended for one (1) year if they are being sponsored by the department for the specific training.

CLASS AGE RESTRICTIONS

MINIMUM AGE OF 18

Aerial Apparatus Practices
Aerial Apparatus Practices – Extended
Basic Vehicle Rescue – Technician
Confined Space Rescue – Operations
Confined Space Rescue – Technician
Emergency Vehicle Driver Training (EVDT/EVOC)
Engine Company Operations
Engine Company Operations at Residential Structures
Fire Attack at Attic Fires
Fire Attack at Basement Fires
Fire Attack at Garage Fires
Fire Operations – Module D
Hazardous Materials Technician
Interior Firefighter (HACC – SPSC programs)
New Aerial Apparatus Familiarization
Pump Operations I
Pump Operations II
Rapid Intervention Team Operations
Rope Rescue I
Structural Burn Session
Structural Burn Refresher
Structural Collapse Operations – Level II
Truck Company Operations I
Truck Company Operations II
Trench Rescue Operations
Trench Rescue Technician
Water Rescue and Emergency Response – Phase I

MINIMUM AGE OF 16

Basic Vehicle Rescue – Awareness
Basic Vehicle Rescue – Operations
Exterior Firefighter
Hazardous Materials Operations

MINIMUM AGE OF 14

Basic Rigging for Rope Rescue/Ropes and Rigging
Confined Space Awareness
Fireground Support
Hazardous Materials Awareness
Introduction to the Fire Service
Structural Collapse Operations – Level I
Trench Rescue Awareness
Water Rescue Awareness

**Students attending programs must meet the minimum age requirements on the first scheduled class session.
No exceptions will be granted for students who do not meet these requirements.*

LIVE-FIRE TRAINING INFORMATION

Students attending a course of instruction sponsored by the Fire Training Unit in which live-fire or smoke, or theatrical smoke will be utilized during the class, or the use Self Contained Breathing Apparatus (SCBA) is required will adhere to the following:

- No facial hair will be permitted that interferes with the face piece seal between the SCBA mask and the student's face.
- Students will need to be clean shaven any time during the program when SCBA use is required, regardless of whether live-fire or smoke is being utilized.
- The Lead Instructor will be responsible for policing the facial hair policy and will have the final say as to whether a student can or can not participate in a training evolution. Any student that does not comply with the facial hair policy will risk not being able to successfully complete the respective training program.
- Students participating in live-fire evolutions will wear long sleeve shirts and pants and are encouraged to bring a change of clothes with them on burn days. No shorts or short sleeve shirts will be allowed under Firefighter Structural Protective Clothing during live-fire training evolutions.

STUDENT CONDUCT

All students attending programs at the Shumaker Public Safety Center are asked to abide by the following guidelines:

- All students are expected to arrive on time for all class sessions.
- Students should utilize the front parking lot and main entrance of the building for all programs unless otherwise directed by the instructional staff.
- Students should bring note-taking material and a writing implement (pen or pencil) with them to class.
- Side conversations in the classroom environment should be avoided.
- Students are expected to dress appropriately for classroom and practical sessions, and avoid wearing attire that may be found offensive or objectionable by other students or staff.
- Casual dress attire (dress pants and a collared shirt) for management series and instructor/educational methodology programs is strongly encouraged.
- At a minimum, students are expected to have head, hand, foot, and eye protection in place anytime they are operating on the training grounds or involved in practical exercises.
- Students should refrain from walking on the stones/rocks that separate the training buildings while on the grounds.
- Tobacco use is prohibited on the training grounds.
- Students are expected to conduct themselves in a professional manner at all times while at the Public Safety Center, and treat instructors, other students and visitors with respect at all times.
- Any students found to be disruptive or not following the above guidelines may be dismissed from a program at the discretion of the Lead Instructor.

REGISTRATION PROCEDURE

Fire Department Paying for Student

- Designate Responsible Signature Officer
(Chief/Treasurer/President)
 - ◆ Can be more than one person
 - ◆ Responsible person/s should be authorized by the agency to approve training and acknowledge responsibility of payment.
- Student chooses classes and fills out appropriate department paperwork.
- Designated Officer completes ***Noncredit Registration with Permission for Billing Form (Form A)***.
- Designated Officer can:
 - ◆ Fax form to SPSC – 780-3295
 - ◆ Mail to: SPSC Fire Training Unit
Attn: Enrollment Team
HACC
One HACC Drive
Harrisburg, PA 17110
- A confirmation letter will be sent to student if accepted into the program.
- The student will be notified by phone if class is filled or cancelled.
- The department will be billed within 7 business days following the completion of the class.

Student Self Pay

- Student chooses classes and fills out ***Official Enrollment Form (Form B)***
- The student can:
 - ◆ Fax form to SPSC – 780-3295, **MUST** include Credit Card Information.
 - ◆ Mail form to SPSC – **MUST** include check or credit card information for total amount of classes.
 - ◆ Phone information to SPSC – 780-2510 or 780-2607
- A confirmation letter will be sent to student if accepted into the program.

Harrisburg Area Community College does not discriminate in admission or employment on the basis of race, color, religion, political affiliation or belief, age, sex, national origin, ancestry, non-job-related disability, place of birth, General Education Development Certificate (GED), marital status, sexual orientation, or veteran status. Inquiries concerning affirmative action should be directed to the office of Human Resources, Whitaker Hall 126, Harrisburg Area Community College, One HACC Drive, Harrisburg, PA 17110, telephone (717) 780-2367. For information regarding services, activities, and facilities that are accessible to and usable by persons with disabilities contact Carole Kerper, Director, Disability Services, Whitaker Hall 123, telephone (717)780-2614.

Use this form if you are paying for your own enrollment

HACC Official Enrollment Form (Noncredit Courses Only)

Mail to: "Noncredit Cashier" at the HACC Campus nearest you.

(* Asterisks designate required information. Incomplete or inaccurate information may delay or prevent registration. Please print.

H
 *HACCID _____ *Full Name: First _____ Middle _____ Last _____

Previous Name(s) Used _____

* Home Street Address _____

* City _____ * County _____ * State _____ * Zip _____

* Work Phone _____ * Home Phone _____ * Cell Phone _____ * Other Phone _____

E-mail Address _____
 HACC provides its students with a generated identification number. Your Social Security Number and Date of Birth may be used for student ID verification.

* Indicate the last 4 digits of your Social Security Number _____ * Date of Birth (MM/DD/YYYY) _____

* Section Number	* Start Date	* Course Title	* Cost

* I require special accommodations for accessibility: Yes No

* Pennsylvania Resident: Yes No

* I hereby certify that the above information is true to the best of my knowledge.

Personal Information: (Used for statistical purposes and will not be used to determine admission.)

Gender: Male Female

Ethnicity: (Check one) Hispanic/Latino Non-Hispanic/Latino

Race: (Check all that apply) American Indian/Alaskan Native Native Hawaiian/Other Pacific Islander Asian
 White Black/African American

Are you taking this course at the request of your employer? Yes No

Do you anticipate being reimbursed by your employer? Yes No

Method of Payment: Credit Card (see below) Check or Money Order (payable to HACC)

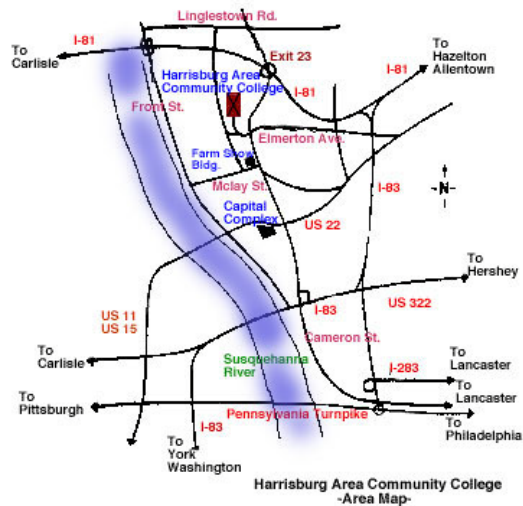
I, (print name as it appears on credit card) _____ authorize
 Harrisburg Area Community College to charge \$ _____ to my VISA MasterCard

Account Number _____ Expiration Date (MM/YY) _____

Authorized Signature _____ (10/15/08)

Candidates are required to complete a separate application to complete enrollment for certification examinations.

HOW TO GET TO HARRISBURG AREA COMMUNITY COLLEGE SENATOR JOHN J. SHUMAKER PUBLIC SAFETY CENTER



DIRECTIONS FROM WEST SHORE OR CARLISLE: Take I-81 north to Cameron Street Exit 67A. From Cameron Street, turn right at the first traffic light. Go through the next traffic light, and go to Entrance # 5 (Public Safety Training Center). If traveling north on Route 11, continue on Routes 11-15 north to I-81 (north of Enola). Follow I-81 north across the Susquehanna River, then take Cameron Street Exit 67A. Go through the next traffic light, and go to Entrance #5 (Public Safety Training Center).

DIRECTIONS FROM DOWNTOWN HARRISBURG: Take Second Street north to the 2100 block and turn right onto Maclay Street. Follow Maclay Street east across the railroad bridge to the traffic light at the Farm Show Building. Turn left onto Cameron Street and travel north to the next traffic light. Turn left and go through the next traffic light, and go to Entrance #5 (Public Safety Training Center).

DIRECTIONS FROM THE NORTH: Take Routes 11-15 south following the Susquehanna River to I-81. Follow I-81 north across the river then take Cameron Street Exit 67A. From Cameron Street, turn right at the first traffic light. Go through the next traffic light, and go to Entrance #5 (Public Safety Training Center).

DIRECTIONS FROM UPPER DAUPHIN AREA: Take Route 147 south or Route 225 south to Route 322 (River Relief Route). Route 322 becomes Cameron Street after crossing I-81. From Cameron Street, turn right at the first traffic light. Go through the next traffic light, and go to Entrance #5 (Public Safety Training Center).

DIRECTIONS FROM LANCASTER: Take I-283 north toward Harrisburg to I-83. Follow I-83 north and merge with I-81 south. Take Cameron Street Exit 67A. From Cameron Street, turn right at the first traffic light. Go through the next traffic light, and go to Entrance #5 (Public Safety Training Center).

DIRECTIONS FROM YORK: Take I-83 north across the Susquehanna River to the east shore of Harrisburg. Follow I-83 to the north and merge with I-81 south. Take Cameron Street Exit 67A. Turn right at the first traffic light, go through the next traffic light and go to Entrance #5 (Public Safety Training Center).

DIRECTIONS FROM THE PENNSYLVANIA TURNPIKE: If traveling WEST on the turnpike, take Exit 19. Travel north on I-283 which becomes I-83. Follow I-83 north and merge with I-81 south. Take Cameron Street Exit 67A. From Cameron Street, turn right at the first traffic light. Go through the next traffic light, and go to Entrance #5 (Public Safety Training Center). If traveling EAST on the turnpike, take exit 17. Take I-81 north to Cameron Street Exit 67A. From Cameron Street, turn right at the first traffic light. Go through the next traffic light, and go to Entrance #5 (Public Safety Training Center).

IMPORTANT DATES TO REMEMBER FOR 2011

Event Name	Event Date	Start Time	Location
Annual Instructor/Evaluator In-Service Meeting	January 29, 2011	0800	Wildwood Conference Center
Homeland Security Conference	March 8 – 11, 2011	0800	Wildwood Conference Center
Hazardous Materials Technician Conference	Sept 29 – Oct 1, 2011	0800	Wildwood Conference Center

